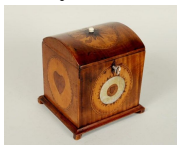


October Fall Fine Estates Auction 10/5/2014

LOT #

1 English Mixed Woods & Mother of Pearl Tea Caddy

English mixed woods and mother of pearl inlaid tea caddy, 18th century, provenance James Julia, late 1990s'. 5 1/4" high, 4 1/2" wide. Condition: a couple small chips, repair to interior lid, losses to liner.



2 Tiffany & Co. Sterling Silver Tray

Tiffany & Co. sterling silver oval handled presentation tray engraved "to Leroy A. Van Bommel..." dated 1948. 17 5/8" high, 28 1/2" wide. Weight: 124.8 OZT. Condition: scratches.



3 "Christ" Oil on Tin, Greek Lithographed Icon

Possibly Spanish colonial school, 18th/19th century, "Christ" oil on tin, unsigned, together with a Greek lithographed icon, 6 7/8" high, 4 3/4" to 7" high, 5 3/4" wide. Condition: soiling, crazing, losses, rust.



4 French Marble Art Deco Three Piece Clock Set

French marble Art Deco three piece clock garniture with enamel dial signed "Charmeux Montereau". 6 1/2" high, 5" wide to 9 3/4" high, 12 1/2" wide. Condition: not running, marble chips.



5 Large Lot Royal Crown Derby "Imari" Porcelain

Large lot of English Royal Crown Derby porcelain in the "Imari" pattern, 19th/20th century, comprising an assembled partial tea service: teapot, covered sugar, creamer, waste bowl, serving dish, seven teacups, fourteen coffee cups and fourteen saucers. 2" high, 4 1/2" wide to 6" high, 12 1/2" wide. Condition: two cups and saucers with later blue mark, gilt, enamel wear, some saucers with edge chips.



LOT #

6 Aubusson Style Wool Tapestry

Aubusson style wool tapestry, 20th century, with central hunt scene of fox, hound and rider, enclosed by wide border of putti, fruit and foliate designs. 86 1/2" high, 79" wide.



7 Estate Group of Ten Peace Dollars

Estate group of ten peace dollars, various dates, all ungraded, condition as shown, together with a large group of US 20th century silver coins of various denominations.



8 Clarks' Mahogany Spool Cabinet

Clarks' mahogany spool cabinet, 19th century, having six drawers with stenciled labels, Clarks logo on verso. 22" high, 28 1/2" wide, 18 1/2" deep. Condition: finish wear, loss, stains, small loss to bottom label.



9 Regency Brass Inlaid Tea Caddy

Regency brass inlaid tea caddy with brass shell form handles, interior with four hinged tea compartments and two original cut glass rinsers. 8" high, 16" wide. Condition: age cracks, edge chip to one rinser.



10 Estate Group of Morgan Dollars

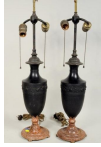
Estate group of twenty five Morgan dollars, many in a higher grade, various dates including 1878 eight feathers.



October Fall Fine Estates Auction 10/5/2014**LOT #****11 Pair Black Basalt Lamps, Possibly Wedgwood**

Pair of black basalt lamps, possibly Wedgwood, with metal mounts. 26" high, 4 1/2" wide.

Condition: base paint residue on basalt at stem.

**12 Dutch Inlaid Mahogany Gout Stool, Empire Stool**

Two antique stools, comprising a Dutch inlaid mahogany gout stool, with crude floral marquetry and contrasting light and dark banding, 19th century, re-upholstered, together with a small Empire style curule form stool with roundels. 7 1/2" high, 15" wide, 13" deep.

**13 Carved Wood Reliquary Cross**

Carved wood reliquary cross, 19th century, with image of Christ and Mary, sliding compartment verso for relic, 6" high excluding bale, 2 1/4" wide. Condition: wear, worm damage.

**14 Possibly Robert W. Stark "Sailboat on Calm Sea"**

Possibly Robert W. Stark, Jr., born 1933, "Sailboat on Calm Sea", oil on panel, signed lower left "R. Stark". Sight size: 4 1/4" high, 7 1/2" wide. 6 1/4 high, 9 1/2" wide.

**15 Classical Carved & Gilded Convex Mirror**

Classical carved and gilded convex mirror having a crest of a spread winged eagle on rockwork, acanthus leaf carving below. 42 1/2" high, 25" diameter. Condition: gilt wear, loss, age cracks, small losses, repair to acanthus carving.

**16 Engraved Brass & Iron Bench Form Fireplace Trivet**

Engraved brass and iron bench form fireplace trivet, the pierced top centering a knight on horseback, over a pierced foliate apron, with six legs and lower shelf. 16" high, 24" wide, 11 1/2" deep.

**LOT #****17 Pair Czechoslovakian Porcelain Urns**

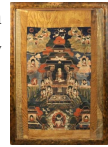
Pair Czechoslovakian porcelain urns, circa 1900, with transfer decoration. 10" high, 4 1/8" wide. Condition: gilt wear, loss, small chip to one stem.

**18 American Officers' Sword Carried by Cpt. Madison**

American officer's sword, early 19th century, carried by Captain Madison in the War of 1812 with tag. 35" long, 4 1/2" wide. Condition: one nick to blade, lacking scabbard.

**19 Tibetan Thangka**

Tibetan thangka, 19th century, pigment on cloth depicting a central peaceful deity surrounded by smaller figures in clouds at top, birds and many armed deity below. Framed, not examined out of frame. Panel 34" high, 21 1/4" wide. Frame size: 48 1/2" high, 34" wide. Condition: soiling, stains, creases, minor losses.

**20 English Sterling Silver Cut Glass Double Inkwell**

English sterling silver cut glass double ink well, made in 1955, makers' mark W&H, having 2 cut glass inkwells on pierced footed tray. 2 3/4" high, 10 1/2" wide. Weighable silver: 7.925 OZT. Condition: a few tiny base chips to glass, base missing one screw cap.

**21 Estate Group of American Coins**

Estate group of collectible American coins, comprising approximately forty Indian head cents, approximately twenty five Buffalo nickels, seven liberty nickels, 1853 O seated liberty half, 1850 O seated liberty half, 1854 seated liberty quarter, 1960 O small date (unclear), 1925 stone mountain half, and 1857 liberty seated dime. Condition as shown, all ungraded.



October Fall Fine Estates Auction 10/5/2014**LOT #****22 Four Civil War Items - A.M. Everman, Indiana**

Four American Civil War items carried by A.M. Everman, Indiana, 19th century, comprising glasses by Bardou & Son, Paris "U.S. Army Signal Glass", bugle, mirror and carved pecan shell whimsy. 1 1/4" high, 1 1/2" wide to 10 1/2" high, 6 1/2" wide. Condition: use wear, finish loss, losses.

**23 Venetian Burl Olive Wood Parquetry Game Table**

Venetian burl olive wood parquetry game table with shaped top and apron. 29" high, 31" wide, 32" deep. Condition: age cracks, finish loss, top with slightly lifted areas.

**24 George III Mahogany Bracket Clock**

George III mahogany bracket clock, late 18th/early 19th century, made by Wilmhurst of Chichester, recorded as a clockmaker circa 1790, with fish scale side frets and front panels, eight inch repainted dial on bracket feet. Case 15 1/2" high, 11 1/2" wide. Condition: age cracks, veneer cracks.

**25 Regency Brass Inlaid Box**

Regency brass inlaid box with single drawer below having elaborate brass inlay. 6" high, 11" wide. Condition: drawer stuck, age cracks.

**26 American Needlework Sampler, Fishkill NY - 1826**

Framed American needlework sampler, with field of verse, flowers and architectural details, signed "Maria Elizabeth Scofield Work Fishkill November 2nd 1826". Sight size: 13" high, 13" wide; frame size: 20" high, 20" wide. Framed, not examined out of frame. Condition: fading, fragile condition, some areas of loss.

**LOT #****27 Victorian Burl Walnut Letter Box**

Victorian burl walnut letter box, interior with various slots for correspondence, inkwells and pen tray, and drawer below. 12" high, 13 1/2" wide (closed) 25" wide (opened). Condition: finish wear, loss, stains, edge chips, replaced key plate.

**28 Early Possibly Persian or Middle Eastern Flask**

Early possibly Persian or Middle Eastern pewter flask depicting St. George slaying the dragon, 6 1/2" high, 3 3/4" wide. Condition: dents, one small hole on side, lacking top.

**29 Two Vials of Gold Flakes**

Two vials of gold flakes from family claim in Fiddletown, CA, early 20th century. Weight: approximately 13.125 DWT.

**30 Pair Patinated Bronzed Metal Figural Fluid Lamps**

Pair patinated bronzed metal figural fluid lamps, electrified. 25" high, 6 1/4" wide.

**31 Group Emerald Cut Glass Bowls & Underplates**

Group of thirteen emerald cut to clear bowls and thirteen underplates. 2" high, 4 1/3" diameter to 5 1/2" diameter. Condition: five plates, three bowls with edge chips.

**32 Three Leather Bound Religious Books**

Three leather bound religious books comprising: Robert Millar, "History of the Propagation of Christianity..." volume 1 published 1731, "La Theologie Chretienne", published 1721. and "The Complete British Family Bible". 8" high, 5" wide to 15 1/2" high, 9 3/4" wide. Condition: soiling, stains, losses.



October Fall Fine Estates Auction 10/5/2014

LOT #**33 H. Welton, CT Ogee Mantle Clock**

American Classical 19th century mantle clock, possibly a marriage clock, made by H. Welton, Terryville, CT "at the old stand of Eli Terry", with partially white painted and gilt embossed case and dial, original label in interior. 26 1/8" high, 16" wide. Condition: age cracks, soiling, losses.

**34 Large George III Inlaid Mahogany Tea Caddy**

Large George III inlaid mahogany tea caddy, interior with two tin containers having sliding lids and large pierced tin container, caddy with one lower drawer below. 9" high, 16 1/2" wide. Condition: top with one small area of veneer loss, restoration to lid near hasp, one tin lid slides tightly, one replaced lid pull.

**35 Caucasian Wool & Linen Tunic**

Caucasian wool and linen tunic, with partial flat woven wool and metallic thread detail. 44" high, 48" wide. Condition: stains, losses.

**36 Group Six Pipes**

Group of six pipes, 19th/20th century, comprising a carved meerschaum pipe of a bird's claw with three dogs and a rabbit between the talons with leather case, a long handled meerschaum with cross hatched decoration, a small meerschaum and three briarwood pipes, 6 1/2" long, 1 1/8" wide to 20 1/2" long, 1 1/8" wide. Condition: soiling, cracks, wear, losses.

**37 Sterling Silver Pitcher**

Sterling silver pitcher by Black Starr & Frost, 20th century, monogrammed. 10 1/4" high, 8 1/2" wide. Weight: 33.670 OZT. Condition: slight dent in base.

**LOT #****38 Pair of Georgian Silver Shell Form Salts**

Pair of Georgian sterling silver shell form salts with armorial crests, made in London in 1830, makers' mark "EH B JW" for Edward, John and William Barnard, 3 7/8" wide, 3 1/2" deep. Weight: 8.99 OZT. Condition: use wear.

**39 Pair Czech Cranberry Glass Painted Decanters**

Pair of Czech cranberry glass florally painted decanters, 19th century. 12 1/2" high, 5" diameter.

**40 Two Birmingham Sterling Items**

Two Birmingham sterling items, 20th century, comprising a Georgian style teapot made in 1928, makers' mark JGLE (marks rubbed) and a sterling handled glass pitcher, monogrammed, made in 1890, makers' mark JTHJHM (marks rubbed), 8 1/4" high, 5 1/4" wide to 9 1/4" high, 11 1/4" wide. Gross weight teapot: 21.755 OZT. Condition: use wear, scratches.

**41 Five Vintage Dolls**

Five vintage dolls, 20th century, comprising: three Madame Alexander dolls, Midge and a large vinyl baby doll with movable eyes, together with five accessories, 7 1/2" high, 2 1/2" wide to 18 1/2" high, 13" wide. Condition: soiling, wear, losses.

**42 Paint Decorated Leather Fire Bucket**

Paint decorated leather fire bucket, "JS Williams Relief 1803". 20" high including handle, 9" diameter. Condition: wear, losses.



October Fall Fine Estates Auction 10/5/2014**LOT #****43 Five Various Glass Paperweights**

Five various glass paperweights, 19th/20th century, unsigned, including two with millefiore interiors, 2 1/4" high, 2 1/4" diam. to 2 1/2" high, 3 1/2" diam. Condition: scratches, tiny chips.

**44 German Heinrich Handwerck Bisque Head Doll**

German Heinrich Handwerck bisque head doll, 19th century, with movable glass eyes, stamped on back of head 283/28.5 MAH Handwerck Germany 2 1/3, together with a doll trunk. Doll: 22 1/2 long, 7" wide. Condition: chips to interior rim of head, soiling, crack to left arm, chips, losses.

**45 Lemon Top Brass & Wire Fireplace Screen**

American lemon top brass and wire fireplace screen, "D" shaped with three lemon top finials. 13" high, 51 1/2" wide, 16" deep. Condition: breaks, bends, wire losses, other wear consistent with age and usage.

**46 Framed Chinese Silk Embroidery**

Framed Chinese silk embroidery, 19th century. Sight size: 7 1/2" diameter. Condition: soiling.

**47 Bronze Figural Group/Palm Tree**

Bronze figural group with palm tree. 10 1/2" high, 8" wide. Condition: camel slightly bent.

**48 Six Sterling Silver and Enamel Demitasse Spoons**

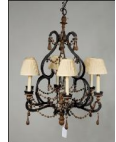
Six sterling silver and enamel demitasse spoons, circa 1900, in original case, 3 7/8" long, 3/4" wide. Condition: use wear.

**LOT #****49 Civil War Rifle, Bayonet & Powder Flask**

Civil War rifle, bayonet and powder flask, 19th century, carried by A.M. Everman, Indiana, rifle stamped 1865 US with eagle insignia and E. Robinson New York. 9" high, 4 1/4" wide to 55 3/4" long, 4 1/2" wide. Condition: cracks, small losses to wood, finish wear, loss, ding to flask.

**50 Continental Wood & Iron Six Light Chandelier**

Continental wood and iron six light chandelier with turned stem, wood bead swags and drops. 31 1/2" high, 23" diameter.

**51 Mexican Sterling Silver Shell Form Dish**

Mexican sterling silver shell form dish by Sanborns, 20th century, 5" high, 8 1/2" wide. Weight: 14.85 OZT.

**52 Pair Bronze Figural Urns with Marble Bases**

Pair of bronze figural urns mounted on marble bases. 20" high, 8" wide. Condition: edge chips to marble.

**53 Chinese Rose Medallion Punch Bowl**

Chinese rose medallion punch bowl, 19th century, enameled with various figural bird and floral reserves, gilt rim. 7" high, 16" diameter. Condition: gilt, enamel wear, loss, hairline cracks to base.

**54 Six Light Brass Chandelier**

Six light brass chandelier, 18th century. 17 1/2" high, 24 1/2" wide. Condition: wear commensurate with age.



October Fall Fine Estates Auction 10/5/2014**LOT #****55 V. Weley, 7 Miniature Still Life Paintings, O/M**

V. Weley, American, 20th century, seven miniature still life paintings depicting early American and other objects, oil on masonite, all signed "V. Weley". 5" high, 4" wide to 9 1/4" high, 7 1/4" wide (framed). Condition: scuffing, scattered stains, green jar with scratch.

**56 Pair of Faux Grained/Painted Column Lamps**

Pair of faux grained and painted column lamps. Columns 16" high, 4" wide. Condition: soiling, paint wear, loss, chips.

**57 Georgian Carved Mahogany Liquor Caddy**

Georgian carved mahogany liquor caddy, 19th century, elaborately carved top and sides, brass handles, interior with four hand blown glass bottles with engraved metal stoppers. 11" high, 12" wide. Condition: chips, lacking two bottles.

**58 French Violin and Wood Case**

French violin and wood case, 19th/20th century, paper label in interior "Vuillaume A Paris Rue Croix Des Petits Champ 46". Violin 23 1/2" long, 8 1/8" wide. Condition: detached fret board, chip to upper left edge, wear, finish loss to neck.

**59 St. Lambert Signed Crystal Tray, Art Glass Basket**

Val St. Lambert crystal tray and art glass basket. 7 1/4" high, 4" wide to 15 1/4" long, 8 1/2" wide. Condition: small chips to tray.

**60 Chinese Export Porcelain Punch Bowl**

Chinese export porcelain punch bowl, 20th century. 7 1/4" high, 16 3/4" diameter. Condition: gilt wear, loss.

**LOT #****61 Pair Brass Two Light Wall Sconces w/ Brass Poker**

Pair of brass two light wall sconces, with scrolling arms issuing from a baluster form plate, un-electrified, together with a fine brass poker with knopped and faceted shaft. Sconces 9 1/2" high, 10" wide; poker 30" long.

**62 Two Continental Porcelain Items**

Two Continental porcelain groups, circa 1900, comprising a female group and a putti basket. 8 1/4" high, 4" wide to 5 1/2" high, 8 1/2" wide. Condition: chips, enamel loss, repair to female group.

**63 Etched Glass Hanging Hall Lantern**

Etched glass hanging hall lantern, 19th century, with grape and leaf decoration. 23 1/2" high, 11" diameter.

**64 Small German "Casige" Sewing Machine**

Small German "Casige" sewing machine, 20th century, "Made in Germany British Zone", instructions state "this machine is operated in the same manner as a household machine", together with partial box. 7" high, 8" long. Condition: rust, finish wear.

**65 After J.E. Fraser "End of Trail" Bronze**

After James Earle Fraser (American, 1876 - 1953), "End of Trail" bronze produced by Dave Grossman Designs, Inc., St. Louis, MO. 10 3/4" high, 8 1/2" wide.

**66 Pair French Empire Five Light Candelabra**

Pair French Empire five light candelabra, 19th century. 17 3/4" high, 6 1/4" wide. Condition: crack to one flame candle cover, one with two slightly bent arms.



October Fall Fine Estates Auction 10/5/2014**LOT #****67 Faux Tortoise Shell Sheffield Tray/Stand**

Faux tortoise shell Sheffield silver plate galleried oval tray on stand. 22" high, 31 1/2" wide, 21" deep. Condition: plate wear, loss, lifting of laminate surface, four small "pebbles" glued to surface.

**68 French Marble Clock Garniture**

French marble clock garniture, circa 1900, clock with metal sculpture "Resistance" signed "Ferrand" for Ernest Justin Ferrand (French, (1846 - 1932), atop marble clock with enameled dial flanked by a pair of six light marble urn form candelabra. 20 1/4" high, 10 3/4" wide to 22" high, 22" wide. Condition: break to tip of putti wing, with tip in bag, clock lacking works, repair to upper back left corner of clock marble, a few chips to clock marble.

**69 Civil War Photos, A.M. Everman, Burlington Indiana**

Photos of A.M. Everman, Burlington, Indiana including a photo at age sixteen in Company E 116 of the Indiana Voluntary Infantry, a tintype in his uniform and other portrait photographs together with related family memorabilia including books and two framed rosters. 1 7/8" high, 2 3/8" wide to 27 1/4" high, 21 1/4" wide.

**70 Folk Art Carved Stage Coach Group**

Folk art carved stage coach group, early 20th century, comprising a horse and carriage, possibly American Jailhouse Carvers, signed indistinctly on roof. Condition: losses, damage to one horse.

**71 Pair of Probably Silver Plate Pheasant**

Pair of probably silver plate pheasant, 20th century, both marked "JB 2460". 6" high, 16" long. Condition: bends to feathers and feet.

**LOT #****72 Oak Tall Case Clock**

Oak tall case clock with works and dial by William Mason Dunst (Scotland, active 1800 -1830), in later oak case made by Cyril Barnes, New Canaan, CT, circa 1950. 81 1/2" high, 22 1/2" wide, 12" deep.

**73 Group Four Venetian Gilt Decorated Items**

Group of four Venetian gilt decorated items, comprising two bed trays and two print panels. 18" high, 10 3/4" wide to 14 1/4" high, 29" wide. Condition: chips, gilt, gesso wear, loss.

**74 Two Sterling Silver Trays, Tiffany & Co. & Gorham**

Two sterling silver trays, comprising one Tiffany & Company and one Gorham, pierce decorated footed trays, monogrammed. 1 1/2" high, 8 3/4" diameter to 1 1/6" high, 12 3/4" diameter. Weight: 35.9 OZT. Condition: ding, slight bends to center of Gorham tray.

**75 Continental Wool Tapestry "Figures in a Landscape"**

Continental wool tapestry 'Figures in a Landscape', 19th century. 58" wide, 80" high.

**76 Group Five European Porcelain Items**

Group of five European porcelain items including an Italian courting group, a coaching group, and a Meissen dish. 6" diameter to 9 1/4" high, 8 1/2" wide. Condition: gilt wear, loss, losses, repairs.

**77 Chas. Parker Co., Meriden, CT Coffee Grinder/Lamp**

"The Chas. Parker Company, Meriden, CT" coffee grinder lamp. 28" high, 9" wide. Condition: paint, gilt wear, loss. 35" long, 9" wide.



October Fall Fine Estates Auction 10/5/2014

LOT #**78 NY World's Fair Folding Spectator Seat**

1939 New York Worlds' Fair folding spectator seat. 35" long, 9" wide. Condition: soiling, wear, loss to decal.

**79 Walking Stick, Engraved Gold Filled Cap**

Walking stick with heavily engraved gold filled cap. 36" long, 1 3/4" diameter. Condition: dent to top.

**80 English Needlework Picture on Silk**

English needlework picture on silk, 19th century, mother helping a child cross a small stream. Framed, not examined out of frame. Sight size: 23" high, 15 1/2" wide. Condition: some staining to background, small tears to background.

**81 Eugeny Lanceray, Bronze Kazak on Horseback**

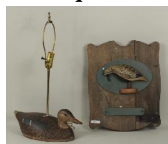
Eugeny Lanceray, Russia (1848-1886) "Zaporozhsky Kazak on horseback after a battle with a Turkish trophy horse" bronze, signed top of base "Lanceray". 18" high, 21" wide. Condition: bends to banner pole and reins.

**82 Continental Porcelain Figure of Gentleman**

Continental porcelain figure of elaborately dressed gentleman with bouquet and book. 20 3/4" high, 8 1/2" wide. Condition: figure broken at base, repaired, small chips, losses.

**83 Ken Harris Stamped Decoy Lamp & Shorebird Plaque**

Ken Harris decoy lamp stamped on base and a decoy sign, on verso "Capt. G.W. Combs SSA Massapequa LI, 1978. 18" high, 14 1/2" wide to 23 1/4" high, 15" wide. Condition: plaque with wear from exposure to elements.

**LOT #****84 Pair Sheffield Two Light Candelabra**

Pair of Sheffield two light candelabra, 20th century. 19 1/4" high, 16 1/2" wide. Condition: one central candle cover with repair.

**85 Crystal & Gilt Bronze Chandelier, Poss. Baccarat**

Crystal and gilt bronze six light chandelier, possibly Baccarat, of bell form with crystal flowers and drops, lower section with glass finial and glass beaded rosettes, four clear and two etched candle cups. 31" high, 23" wide. Condition: a few missing crystals.

**86 Pair Gilt Bronze Mounted Sevres Urn Lamps**

Pair of gilt bronze mounted Sevres urn lamps, 19th century. 33" high, 7 1/4" wide. Condition: one urn cracked, chipped.

**87 Six Sterling Silver Bowls and Trays**

Six sterling silver bowls and trays including a Gorham florally pierced footed tray, a ribbed bowl with pierced border, monogrammed, and others. 9 1/2" diameter to 2 3/4" high, 10 3/4" diameter. Weight: 62.295 OZT. Condition: use wear, scratches, a few small dents.

**88 Two Architectural Fan Carvings**

Two architectural fan carvings, 19th century. 15 1/2" high, 82" wide, 1 1/2" deep. Condition: wear from exposure to elements, losses.

**89 Two Silver Items, Coin Silver Bowl and Silver Tray**

Two silver items, 19th century, comprising a coin silver bowl by Pear and Brother Boston and an Austrian .800 silver tray. 2 3/4" high, 6 1/2" wide to 13 1/2" diameter. Weight: 36.525 OZT. Condition: scratches.



October Fall Fine Estates Auction 10/5/2014**LOT #****90 California Native American Woven Basket**

California Native American woven basket, 19th/20th century, probably Washoe tribe, with continuous stepped triangle design. This basket was given to the consignor's mother by a Native American woman in the 1950's as a gift to commemorate friendship. 4 7/8" high, 9 3/4" diameter. Condition: breaks. losses, wear.

**91 Native American Splint Cradle**

Native American splint cradle, New England tribe, circa 1900, purchased from James Julia, late 1990s'. 9 1/2" high, 13" long. Condition: losses.

**92 Small Sioux Pottery Bowl**

Small Sioux pottery bowl, 20th century, signed on base M. Kanuha?. 3 1/4" high, 4" diameter.

**93 Tribal Woven Basket Case**

Tribal woven basket case, with various geometric horizontal banded designs, 5 1/4" long, 2 3/8" wide.

**94 Large Northwest Coast Carved Goat Horn Ladle**

Large Northwest Coast carved goat horn ladle, with totemic carving on handle purchased at Skinners in October 1997, Lot 129. 19 1/2" long, 5 5/8" wide.

**95 Northwest Coast Woven Aniline Dyed Basket**

Northwest Coast aniline dyed woven grass basket. 2 7/8" high, 4 1/2" diameter. Condition: opening out of round.

**LOT #****96 Large Acoma Olla by Darla Davis**

Large Acoma Olla by Darla Davis, 20th century, purchased from James Julia, late 1990s'. 11" high, 12" wide.

**97 Inuit Whale Vertebra Carving**

Inuit whale vertebra carving depicting a man astride a carved face below. 19 1/2" high, 13" wide. Condition: age cracks.

**98 Acoma Pottery Storage Jar**

Acoma pottery storage jar decorated in brown and white pigment and having a slightly concave base. Provenance: Ex Walden collection. 7 1/2" high, 8 1/2" diam. Condition: soiling, pigment wear, loss, residue in interior.

**99 Three Small Native American Pottery Bowls**

Three small Native American pottery bowls including two Acoma bowls, both signed "Acoma". 1 1/2" high, 2 1/8" diameter to 3" high, 3 1/2" diameter. Condition: smallest with pigment loss, next smallest with rim chip.

**100 Intact Escavada Style Puerco Pottery Bowl**

Intact Escavada style Puerco pottery vessel, New Mexico 925-1125 AD, in black and white stylized banded designs. 5 1/2" high, 5 1/2" wide. Condition: two rim cracks approximately 3" long, neck drilled in four places, slight pigment loss.

**101 Prehistoric New Mexican Pottery Bowl**

Prehistoric New Mexican pottery bowl in red and brown designs on a cream ground. Provenance: Ex collection Robert Nichols. 4 1/8" high, 6 1/4" diameter. Condition: rim chip, stains, soiling.



October Fall Fine Estates Auction 10/5/2014**LOT #****102 Apache or Pima Woven Basket**

Apache or Pima woven basket with stepped design, braided rim. 3 3/4" high, 7 3/4" diameter. Condition: toning, a few small losses.

**103 Meissen Porcelain Dish**

Meissen porcelain dish, 19th century, grape and leaf border, hand painted floral center. 11 1/4" diameter. Condition: chip, repair.

**104 Twelve Probably Austro-Hungarian Silver Forks**

Set of twelve probably Austro-Hungarian silver forks, circa 1900, monogrammed with makers' mark of profile looking right in an octagon, makers' mark RL under a crown (marks rubbed). 8 1/2" long, 7/8" wide. Weight: 24.94 OZT. Condition: use wear, scratches.

**105 Limoges Berry Bowl, 6 Small Bowls, Nippon Pitcher**

Limoges berry bowl, six smaller bowls and a Nippon pitcher. 5 3/4" diameter to 9 1/2" diameter. Condition: a couple base chips, hairline crack to lid.

**106 Pair of English Brass Candlesticks**

Pair of English brass candlesticks, 19th century, bases stamped "The Diamond Princess English No. 3". 11" high, 4" wide. Condition: use wear, dings.

**107 Nine Sterling Silver & Sterling Handled Utensils**

Nine sterling silver and sterling handled utensils including a Dominic and Haff ladle, monogrammed, a pierced server possibly made in Glasgow in 1860, a pair of parcel gilt berry spoons stamped "Bailey & Co." 6" long, 1 1/8" wide to 11" long, 3 5/8" wide. Condition: use wear, scratches. Weighable silver: 14.965 OZT.

**LOT #****108 Two Silver Plate Cut & Pressed Glass Cruet Sets**

Two silver plate cut and pressed glass cruet sets together with a pair of sterling silver tongs. 5" long, 2" wide to 10" high, 11" wide. Condition: one set missing one bottle, plate wear, loss, a few chips to stoppers.

**109 Two Sheffield Silver Plate Column Form Lamps**

Two Sheffield silver plate column form lamps on stepped bases. 23" high, 5" wide to 32" high, 6 1/2" wide. Condition: plate wear, loss.

**110 Pair Victorian Ebonized Chair Back Wall Sconces**

Decorative pair of Victorian ebonized, inlaid and mother of pearl decorated oval chair backs fitted as unique two light wall sconces. 19" high, 15" wide. Condition: some losses, repairs, arms later.

**111 Brass & Crystal Standing Five Light Chandelier**

Brass and crystal standing five light chandelier with spire and large pendant drops, ribbed central stem. 32" high, 17 1/2" diameter. Condition: chips, a few missing crystals.

**112 Pair Gilt Bronze Mounted Blue Glass Fluid Lamps**

Pair of gilt bronze mounted Victorian blue glass fluid lamps, 19th century. 26" high, 7" wide. Condition: gilt wear, loss.

**113 Two Sterling Silver Items, Oval Bowl & Basket**

Two sterling silver items comprising a Dominic and Haff oval bowl and a handled basket. 4 1/2" high, 5 1/2" wide to 8" wide, 10 5/8" long. Weight: 15.565 OZT. Condition: dings to oval bowl.



October Fall Fine Estates Auction 10/5/2014**LOT #****114 Sheffield Silver Plated Footed Tray**

Sheffield silver plated footed tray with pierced gallery. 17 1/2" wide, 23 1/4" long. Condition: plate wear, loss, one long side slightly bent.

**115 Pair English Brass Barley Twist Candlesticks**

Pair English brass barley twist candlesticks, 18th/19th century. 10 1/4" high, 4 1/2" diameter.

**116 American Coin Silver Sugar Tongs**

American coin silver sugar tongs, 19th century, maker H. Raymond. 6 3/4" long, 1 3/4" wide. Condition: repair to one side. Weight: 1.895 OZT

**117 Seven Small Sterling Silver Trays**

Seven small sterling silver trays, including four inscribed "Winged Foot Club," an Unger Brothers tray and others. 5" diameter to 8" diameter. Weight 35.160 OZT. Condition: scratches, Unger Brothers tray with dings, dents.

**118 Sterling Silver Heavily Engraved Box**

Baroque style sterling silver heavily engraved box, monogrammed. 9 1/2" high, 5 5/8" wide. Weight: 22.4 OZT. Condition: light scratches.

**119 Four Sterling Silver Items**

Four sterling silver items, 20th century, comprising a sterling lidded honey pot and spoon, a Revere bowl and sugar and creamer. 2" high, 3 7/8" diameter to 3 3/4" high, 4" wide. Weight: 10.28 OZT. Condition: use wear, a couple small dings.

**LOT #****120 Reed & Barton Sterling Silver Flatware Service**

Reed and Barton sterling silver flatware service for eight in the "Francis I" pattern, comprising eight dinner forks, eight luncheon forks, eight salad forks, eight knives, eight butter knives, eight seafood forks, sixteen soup spoons, ten teaspoons, two tablespoons, one ladle, one serving spoon. 5 3/4" long, 7/8" wide to 8 1/4" long, 1 7/8" wide. Weighable silver: 102.19 OZT. Condition: use wear, scratches.

**121 Twenty Three Small Sterling Silver and Plate Items**

Twenty three small sterling silver and plate items comprising a pair of Black, Starr & Frost large salt and pepper urns, monogrammed, two pair English smaller salt and pepper urns made in Sheffield in 1900, makers' mark HW, another pair of urns, four sterling cased salt and pepper, two pair tongs, bowl, tea infuser, shell spoon and three pair silver plate salt spoons. 1" high, 2" wide to 5" high, 2 1/4" wide. Weighable silver: 16.975 OZT. Condition: use wear, plate wear, loss.

**122 Six Sterling Silver Goblets by Wallace**

Six sterling silver goblets by Wallace, 20th century. 6 3/4" high, 3 1/4" diameter. Weight: 34.56 OZT. Condition: several small rim dings.

**123 Twenty Two Sterling Silver Butter Dishes**

Twenty two sterling silver butter dishes, 20th century, comprising one monogrammed set of seven, two sets of four, one set of six and a single dish. 2 1/8" diameter to 3 1/2" diameter. Weight: 15.995 OZT. Condition: use wear, scratches.



October Fall Fine Estates Auction 10/5/2014**LOT #****124 Eastlake Mahogany Mantel Clock**

Eastlake mahogany mantel clock, 19th century. 19" high, 10 1/2" wide, 4" deep. Condition: paint wear, loss to dial.

**125 Coin/Sterling Silver Salt Spoons/Sugar Shovel**

Five coin silver and nine sterling silver salt spoons and a sugar shovel, late 19th century, including a pair by Georg Jensen and an early English spoon. 3 3/8" long, 3/4" wide to 6 1/4" long, 1 1/8" wide. Weight: 3.225 OZT. Condition: use wear.

**126 Reed & Barton Sterling Silver Flatware**

Reed and Barton sterling silver partial flatware service in the "Francis I" pattern comprising twelve dinner forks, four salad forks, four seafood forks, twenty teaspoons, fourteen knives, twelve butter knives, two soup spoons, one similar teaspoon. 6" long, 1 1/4" wide to 9 1/2" long, 1" wide. Weighable silver: 79.415 OZT. Condition: use wear, scratches.

**127 Pair Large Sevres Style Porcelain Urn Lamps**

Pair large Sevres style porcelain urn lamps with transfer decoration. 41" high, 11" diameter. Condition: gilt wear, loss, cracks, a few tiny chips, one with repair.

**128 Three Pair Sterling Silver Salts**

Three pair sterling silver salts, 19th century, comprising two pair made in London in 1785, three with makers' mark TS, one marked SJ and an Irish pair with rubbed marks. 1 1/2" high, 3 1/4" wide to 1 3/4" high, 3 1/4" wide. Weight: 11.05 OZT. Condition: use wear, scratches, oxidation.

**LOT #****129 Six Piece Sterling Silver Tea & Coffee Set**

Six piece sterling silver tea and coffee set by Brand-Chatillon Co., 20th century. 4" high, 4 1/4" diameter to 20" high, 14" wide. Gross weight: 126.680 OZT. Condition: dents, scratches, one detached handle, one lid slightly sprung.

**131 Seven Sterling Silver Serving Utensils**

Seven sterling silver serving utensils including a pair of English berry spoons made in London in 1802, makers' mark RC for Robert Cruickshank, a pair of Gorham servers and a spoon and others. 6 1/2" long, 1 1/4" wide to 9" long, 2 1/2" wide. Weight: 15.030 OZT. Condition: use wear, scratches.

**132 Victorian Eastlake Carved Walnut Doll Bed**

Victorian Eastlake carved walnut doll bed, 19th century. 16" high, 114 1/2" wide, 23 1/4" long. Condition: teething marks from a puppy to post finials, age cracks, wear to slats.

**133 Group Sterling Silver & Weighted Items**

Large group of sterling and silver plate items, including a pair of Bigelow Kennard repousse salts, twelve nut dishes, eleven weighted dessert bowls, twelve Gorham nut dishes together with thirteen silver plate spoons. 2 3/8" long, 1/4" wide to 5 3/8" long, 3 1/2" wide. Weighable silver: 39.785 OZT. Condition: scratches, use wear, dents, dings.

**134 Group Sterling Sterling Condiment Servers**

Group sterling silver condiment servers including six pickle forks, eight demitasse spoons and other items. 4 1/2" high, 1/2" wide to 4 1/4" high, 7/8" wide. Weight: 9.235 OZT. Condition: use wear, dings, one fork with bent tines.



October Fall Fine Estates Auction 10/5/2014**LOT #****135 Set of Eight Tiffany & Co. Sterling Silver**

Set of eight Tiffany & Co. sterling silver luncheon forks and knives in the "Faneuil" pattern, 20th century, monogrammed. 7 1/4" long, 1 1/8" wide to 8" long, 7/8" wide. Weighable silver: 13.2 OZT. Condition: use wear, light scratches, a few small dings.

**136 Vintage Austrian Voigtlander Camera**

Vintage Austrian Voigtlander camera. 7 3/4" high, 17 1/2" wide. Condition: extensive use wear, finish wear, loss, one side with blue taped area.

**137 Five Silver Plate Items**

Five silver plate items, including two English teapots, and a Gorham teapot. 4" high, 8 1/2" wide to 8 1/2" high, 9 1/2" wide. Condition: chips to decanter, plate wear.

**138 George Jensen Sterling Silver Serving Spoon & Fork**

George Jensen sterling silver serving spoon and fork, 20th century, monogrammed. 8 1/2" long, 2" wide. Weight: 5.175 OZT. Condition: use wear, scratches.

**139 English Reverse Painting on Glass, "Jessy"**

English reverse painting on glass, "Jessy", the subject finely attired in a picturesque setting. Framed, not examined out of frame. Sight size: 10 1/2" high, 8 1/2" wide.

**140 Group Sterling Silver Flatware**

Group of sterling silver flatware, 20th century, including a Fine Arts partial service in the "Tranquility" pattern comprising eight dinner forks, eight luncheon forks, eight teaspoons, two soup spoons, eight knives, an Alvin serving spoon, six teaspoons and others. 5 1/4" high, 1 1/4" wide to 8 1/2" high, 1 3/4" wide. Weighable silver: 52.680 OZT.

**LOT #****141 Fine Pair Tiffany & Co. Sterling Silver Trays**

Fine pair of Tiffany & Company sterling silver trays, 20th century. 16" long, 12 1/4" wide. Weight: 98.850 OZT. Condition: use wear, scratches.

**142 Sterling Silver Three Piece Tea Set**

A sterling silver three piece tea set, monogrammed, by Cowell and Hubbard Company. 2 7/8" high, 4 1/2" wide to 8" high, 7 1/2" wide. Gross weight: 24.915 OZT. Condition: dings to tea pot handle, lid hinge repaired.

**143 English Needlework Picture, 'Shepherd'**

English needlework picture 'Shepherd', 19th century. Sight size: 17 1/2" high, 20" wide, frame size: 19 1/2" high, 22" wide. Condition: soiling, tear top center.

**144 Group Four Sterling Silver Bowls, One Tiffany**

Group of four sterling silver bowls, 20th century, including a Tiffany & Co. pierced handled bowl and a Mauser pierced handled oval bowl. 9" diameter to 8" wide, 13 1/2" long. Weight: 50.315 OZT.

**145 Group Sterling/.800 Silver Items**

Group of sterling/.800 silver items including an .800 silver candlestick, a Chinese export cup holder, three sterling liquor labels. 3 1/8" diameter to 8 1/2" high, 3 3/8" diameter. Condition: coin trays with wear. Weight 21.520 OZT.



October Fall Fine Estates Auction 10/5/2014**LOT #****146 Group Small Sterling Silver Items**

Group of small sterling silver items, comprising a Cartier weighted bud vase, pair of candlesticks, bell, basket, and a silver plate bowl, illegibly hallmarked. 5" high, 2 1/8" diameter to 17" long, 8" wide. Weighable silver: 4.820 OZT. Condition: dents, dings, scratches.

**147 Group of English Imari Plates, Bowls**

Group of English Imari plates and bowls, 19th century, including fifteen Ridgeways' "Old Derby" plates. 6" diameter to 9 1/2" diameter. Condition: gilt, enamel wear, loss, crazing, stains.

**148 Three Copper Saute Pans**

Three copper saute pans, one with cover. 18" high, 8 1/2" wide to 23 1/2" high, 12 1/4" wide. Condition: use wear.

**149 Pair of English Porcelain Hand Painted Lamps**

Pair of English porcelain hand painted lamps, circa 1900, decorated with bucolic scenes on stands. 25" high, 6 1/2" wide. Condition: a few tiny chips to handles, dents to bases.

**150 Five Copper Pots, Two Copper Utensils & Mirror**

Five copper pots, two copper utensils and a mirror. 15 1/2" high, 2 1/4" wide to 21 1/4" long, 10 1/4" wide. Condition: use wear, dents, rim damage to one pot.

**151 Raymond P. R. Neilson, Portrait of a Gentleman O/C**

Raymond P. R. Neilson, N.A. (American, 1881-1964), "Portrait of a Gentleman", oil on canvas, signed, dated '48 upper left. Sight size: 29 1/4" high, 24 1/4" wide. Frame size: 37 1/2" high, 31 1/2" wide.

**LOT #****152 Two Copper Dutch Ovens**

Two large copper dutch ovens. 8 1/2" high, 17 1/2" wide to 10" high, 20 1/4" wide. Condition: use wear.

**153 Six David Anderson Enameled Demitasse Spoons**

Set of six Danish David Anderson enameled demitasse spoons, boxed. 3 7/8" long, 7/8" wide. Weight: 1.975 OZT.

**154 Twelve Pieces English "Cottageware"**

Twelve pieces English "Cottageware", circa 1920. 4" high, 4" wide to 7 1/4" high, 7 1/4" wide. Condition: chips, cracks, repairs, crazing, stains.

**155 Fine Brass Drinks Cart with Glass Top**

Fine brass drinks cart, with glass top over a wood and brass frame fronted by a swan monopodia mount. 33 3/4" high, 36" wide, 19" deep.

**156 Pair Crystal/Gilt Bronze Sconces, Poss. Baccarat**

Pair of crystal and gilt bronze sconces, possibly Baccarat, having crown form tops with central faceted star over three lights with scroll form supports and large faceted pendant drops. 29" high, 13" wide. Condition: chips, lacking a few drops.

**157 Continental Porcelain Lamp**

Continental porcelain lamp with transfer decorated reserve of figural scene. 33 1/2" high, 9" wide. Condition: edge chip to urn top.



October Fall Fine Estates Auction 10/5/2014

LOT #**158 Pair of English Staffordshire Sheep Vases**

Pair of English Staffordshire sheep vases, 19th century. 6 1/2" high, 5" wide. Condition: crazing, a few small areas of glaze loss.

**159 Pair Chinese Porcelain Famille Verte Covered Jars**

Pair of Chinese porcelain famille verte covered jars with floral reserves. 9" high, 6" diameter. Condition: chips to one knob.

**160 Nine Staffordshire Porcelain Animals**

Nine Staffordshire porcelain animals including two pair poodles and a large red and white spaniel. 3 1/2" high, 2 1/4" wide to 8" high, 6 1/2" wide. Condition: glaze wear, loss, a few chips, repair to one small spaniel.

**161 Four Continental Porcelain Groups & Vases**

Four Continental porcelain groups and vases comprising a pair of covered urns and two courting groups. 7" high, 7 1/2" wide to 10 1/2" high, 6 1/2" wide. Condition: chips, losses and repairs.

**162 Four Cut Glass Decanters, Glassware Set**

Group of four cut glass decanters and assembled glassware set, 20th century, comprising four decanters with sterling liquor labels, makers' mark W, seven small wines, two tumblers, four bourbons, one liquor and two non matching glasses. 2 3/4" high, 2" wide, to 10" high, 4 1/2" wide. Weight: 1.23 OZT. Condition: chips to stopper stems.

**163 Pair Early Cranberry Lidded Cut Glass Urns**

Pair early cranberry lidded cut glass urns, probably by Greenpoint Glassworks, Brooklyn, New York, circa 1861. Designed and cut by Christian Dorflinger. 9" high, 4 5/8" wide. Condition: one with lid chip, one with repaired handle, interior rim chip, other lid with tiny ding to finial point, other urn with a few very

**LOT #**

tiny rim chips.

164 Four Mercury Glass Items

Four mercury glass items, 19th century, comprising a lidded urn, pair of candlesticks with pressed glass candle cups and a single candlestick. 4 3/4" high, 2 2/3" diameter to 11 3/4" high, 4 1/2" diameter. Condition: chips to candle cups, silvering loss.

**165 Set of Four English Royal Worcester Candlesticks**

Set of four English Royal Worcester porcelain candlesticks, 20th century. 10 1/2" high, 4 1/2" wide.

**166 Nine Sandwich Cobalt Glass Items**

Group of nine Sandwich cobalt glass items, 19th century, comprising an urn form vase, a pair of footed compotes, a string holder, a small Sandwich decanter, pitcher and salt, a limes and a cut to clear goblet. 4" high, 6" diameter to 10" high, 5 1/4" diameter. Condition: compotes with edge chips, string holder with base chip, vase with base chips, rough surface.

**167 Small Pair of English Staffordshire Sheep**

Small pair of English Staffordshire sheep, 19th century. 3" high, 2 5/8" wide. Condition: chips, losses.

**168 Group Nineteen Amber Glass Items**

Group of nineteen amber glass items, 19th/20th century, comprising sixteen wines, a pair of perfumes and a lidded urn. 4 3/4" high, 2 3/4" diameter to 10" high, 6" diameter. Condition: chips.



October Fall Fine Estates Auction 10/5/2014

LOT #**169 Continental Brass Standing Lamp**

Vintage Continental brass standing lamp, early 20th century. 54" high overall, brass base 32" high.

**170 Pair of Sandwich Clear Glass Footed Bowls**

Pair of Sandwich clear glass footed bowls, 19th century, having stepped urn form bases with blown glass bowls. 5" high, 5 5/8" diameter. Condition: base chips.

**171 Possibly Dale Chihuly Glass Shell Form Vessel**

Possibly Dale Chihuly (Tacoma Washington, born 1941), glass shell form vessel in shades of green, violet and red, unsigned. 10" high, 18" wide. Condition: breaks, hole in base, one "blister" in interior.

**172 Pair Florally Decorated Porcelain Vases**

Pair of florally decorated porcelain vases, 20th century. 12 1/4" high, 6 1/2" wide.

**173 Group Five Continental Porcelain Items**

Group of five Continental porcelain items including a pair of pierced putti bowls and a pair of floral bowls. 4" high, 5 1/4" wide to 4" high, 5 1/2" diameter. Condition: gilt wear, loss, chips, losses to floral bowls.

**174 Worcester Tureen & Cover with Basin & Pitcher**

Worcester tureen and cover, florally decorated, marked Kerr and Co., "Royal Vitrified China," together with an ironstone basin and white transfer decorated basin and pitcher marked "Colonial Pottery". 13" high, 13" wide to 5" high, 15 3/4" diameter.

**LOT #****175 English Staffordshire Sheep and Lamb**

English Staffordshire sheep and lamb, 19th century, monogrammed "JB", marked on base with four small dots and a dash. 6" high, 4 1/2" wide. Condition: small chips, losses.

**176 Sandwich Threaded Glass Bowls, Plates, Pitchers**

Twenty five Sandwich threaded and ruffled edge glass bowls, underplates and two small pitchers, 19th century. 2" high, 3" wide to 6 1/4" diameter. Condition: chips.

**177 Seven Opalescent & Vaseline Glass Items**

Seven opalescent and Vaseline glass items, 19th century, comprising two opalescent candlesticks, a bowl, Vaseline glass candlestick, Vaseline glass urn, a vase, and amethyst urn. 5" diameter to 11" high, 4" wide. Condition: chips, crack to bowl.

**178 Eleven Ruby Glass Items**

Eleven ruby glass items, 19th century, comprising a pitcher, two cut to clear perfumes, covered jar, three glasses, bowl, plate, and two parts. 3 1/2" high, 2 1/4" wide to 8 3/4" high, 7 1/2" wide. Condition: chips.

**179 Pair Sandwich Clear Glass Oil Lamp Bases & 2 Bases**

Pair of Sandwich clear glass oil lamp bases and two colored glass bases, 19th century. 10 1/2" high, 4 1/4" wide to 12 1/2" high, 4" wide. Condition: chips, base repair to one clear base.

**180 Seven Sandwich Art Glass & Other Items**

Seven Sandwich art glass and other items, 19th/20th century, comprising three goblets, two plates, an urn and a vase. 4 3/4" high, 3 1/2" wide to 7" diameter. Condition: vase with chips, urn with repairs.



October Fall Fine Estates Auction 10/5/2014**LOT #****181 Group of Sandwich & Other Glass Items**

Fourteen Sandwich and other glass items, 19th/20th century, comprising a large clear tumbler, a green witches' ball and bowl, a large covered jar, a blue bowl, under plate and eight various wines. 4" high, 2 1/2" wide to 13 1/2" high, 7 1/2" wide. Condition: fracture to jar lid, chips.

**182 Four English Staffordshire Figures**

Four English Staffordshire figures, 19th century, comprising a near pair of farmers, a woman astride a goat, and a gardener. 6 3/4" high, 4 3/4" wide to 8 3/4" high, 5 1/4" wide. Condition: chips, losses.

**183 Group Sandwich Colored Pressed Glass & Other Items**

Ten Sandwich colored pressed glass and other items, 19th century, comprising a pair of tiebacks, three bowls, a small vase, two perfumes, and a jug. 3 1/2" diameter to 8" high, 5 1/2" wide. Condition: chips, gilt wear, loss.

**184 Collection of Very Rare Sandwich Glass Whimsies**

A collection of fifteen very rare Sandwich glass whimsies, circa 1840, comprising two pair bird topped urns on stands, a pair of fruit baskets, a horse and carriage, two dog groups, pair of candelabra, a bird group, and two finials including an angel finial. States on display case, "Only one other known collection in existence". 3" high, 4 1/2" wide to 12 1/2" high, 5" wide. Condition: chips, breaks, repairs, losses.

**185 Four English Staffordshire Figures**

Four English Staffordshire figures, comprising an English Staffordshire stag figurine, a Staffordshire sheep vase, a Staffordshire small sheep figurine, and a Parian dog figurine. 2 1/2" high, 3 1/4" wide to 7 1/4" high. Condition: crazing, glaze loss, crack to vase, chips, losses.

**LOT #****186 Dutch Style Brass Twelve Light Chandelier**

Dutch style brass twelve light chandelier, 20th century, double headed eagle atop turned stem supporting twelve scrolled arms over large turned ball. 45" high, 33 1/2" diameter.

**187 Pair Staffordshire Sheep Vases**

Pair of Staffordshire vases depicting a pair of sheep with lambs. 6" high, 4 1/2" wide. Condition: chips, repair to one vase.

**188 Steuben Glass Americas' Cup Sculpture**

Steuben glass Americas' Cup sculpture by James Houston, 20th century, etched on base Steuben 1/25 J. Houston, in presentation case with wood base. 7 1/8" high, 12" wide, 2 1/4" deep. Condition: a few small base scratches, glue residue.

**189 Possibly Inuit Stone Carving, Sea Lion**

Possibly Inuit stone carving of a sea lion, 20th century. 14 1/2" high, 8 1/2" wide.

**190 Paul H. Manship, Rare Pair Gilt Bronze Torchers**

Paul Howard Manship (American, 1885 - 1966), very rare pair of gilt bronze torchers, circa 1916, "Adam and Eve and Vulcan and Venus", each shaft inscribed near base "Paul Manship 1916", accompanied by a letter from the Paul King Foundry, Johnston, Rhode Island, documenting the assembly and repair of the torchers in 1965 under the direction of Manship. 59" high, 12" wide. Ex. Collection: Ms. Jeanne Bretillot, Paris, France and New York, NY. Ref: Christies NY, December 6, 1985, Lot 138; Metropolitan Museum of Art NY, Gift of Edward C. Moore, Jr., 1922. Lit: Rand, "Paul Manship", Smithsonian Pub., 1989, p.149, fig. 155. Condition: gilt wear, loss, small chips to marble.



October Fall Fine Estates Auction 10/5/2014**LOT #****191 Asian Leather Trunk on Stand**

Asian leather trunk on stand, 20th century, with pierced brass lock plate. 19 1/2" high, 30 1/4" wide, 20" deep. Condition: finish loss, crack, loss to right rear corner.

**192 Chinese Famille Rose Palace Vase**

Chinese Famille rose palace vase, 19th century, with scalloped rim and gilt fu lion handles. 31" high, 10 1/2" wide. Condition: rim chips, losses, cut or broken at neck base and repaired.

**193 Chinese Cizhou Black Vase**

Chinese Cizhou black vase, possibly Song Dynasty 960 -1279, with ruffled rim, glaze painted dragon encircling body, inscription near tail. 10 1/2" high, 4 1/4" wide. Condition: several small glaze chips to rim, one to underside of rim.

**194 Possibly Asian Bronze Patinated Vase**

Possibly Asian bronze patinated vase, 20th century, unsigned. 8 1/8" high, 5 1/4" wide. Condition: small ding to base.

**195 Large Chinese Cloisonne Urn Lamp**

Large Chinese cloisonne urn lamp, 19th century, with dragons encircling body, mask ring handles, with wood stand. Urn 15 1/2" high, 11" wide. Condition: enamel loss.

**196 Chinese Cizhou Vase**

Chinese Cizhou vase, possibly Song Dynasty 960 - 1279, with carved flowers and leaves in a green glaze cut through to a brown body. 10 1/2" high, 5" diameter. Condition: crazing.

**LOT #****197 Pair Chinese Porcelain Palace Covered Urns**

Pair of Chinese enameled porcelain palace covered urns, 20th century. 32" high, 16" wide.

**198 Early Chinese Ancestral Portrait of Noblewoman**

Early Chinese ancestral portrait of a noblewoman, pigments on silk, unsigned, bearing label fragment verso, possibly "Yamanaka & Co., 580 Fifth Avenue, NY, NY, Portrait of Lady, Dates 1368 - 1664". Framed, not examined out of frame. Sight size: 34 1/2" high, 22 1/4" wide, Frame size: 36" high, 24" wide. Condition: stains, losses.

**199 African American Crocheted & Embroidered Textile**

African American crocheted and embroidered textile, early to mid 20th century, in an abstract design. 48" high, 60" wide.

**200 Chinese Porcelain Famille Verte Covered Urn Lamp**

Chinese porcelain famille verte covered urn lamp with metal mounts, 28 1/2" high, 8 1/2" wide. Condition: small base chip.

**201 Chinese Carved Jade Nine Dragon Pendant**

Chinese carved jade nine dragon pendant, rectangular plaque form, the variegated green stone carved on both sides with dragons in relief. 2 1/2" high, 1 3/4" wide.

**202 Near Pair Chinese Porcelain Hatstands**

Near pair of Chinese porcelain hatstands, circa 1900, both with transfer figural decoration. Approximately 11 1/4" high, 5" diameter. Condition: enamel wear, loss, one with hairline crack to base.



October Fall Fine Estates Auction 10/5/2014**LOT #****203 Group Seven Chinese Export Paintings**

Group of seven Chinese export paintings, various scenes, including genre and family groups, all gouache on pith paper. Framed, not examined out of frames. Sight size: 11" high, 7 1/2" wide to 5 1/2" high, 3 3/4" wide. Condition: visible tears to ground.

**204 Chinese Red Lacquer Chest on Stand**

Chinese red lacquer chest on stand, floral decorated front with gold highlights, butterfly lock plate, and metal hardware. 31 1/2" wide, 20 1/2" deep, 18" high.

**205 Framed Japanese Watercolor on Silk**

Japanese watercolor on silk depicting bird and roses, signed lower right with red seal. Framed, not examined out of the frame. Sight size: 46 3/4" high, 16 1/4" wide, frame size: 47 7/8" high, 17 1/2" wide. Condition: toning, stains.

**206 Pair Famille Verte "Mirror Image" Lidded Jars**

Pair Famille Verte "mirror image" lidded jars, finely decorated with peonies, birds and blossoms, double ring mark. 16" high. Condition: enamel wear, loss, firing crack to one jar rim, chip to one base rim, chips to interior of one lid, firing crack to one base rim, one lid repaired.

**207 Chinese or Tibetan Painted Panel**

Chinese or Tibetan painted panel depicting a deity, 19th century, painted character on reverse, in carved and painted frame with iron handle at top. Sight size: 14 1/8" high, 12 3/8" wide, frame size: 33" high, 16 1/4" wide. Condition: soiling, alligating, losses.

**LOT #****208 Near Pair Chinese Porcelain Hatstands**

Near pair Chinese porcelain hatstands, circa 1900, both with hand painted figural decoration. Approximately 11 1/2" high, 5" diameter.

**209 Early Persian Glazed Blue/White Pottery Jar**

Early Persian blue and white painted under glazed pottery jar with abstract tree and mountain motif, 17th/18th century. 10 1/4" high, 8 1/2" wide. Condition: chips, crazing, stains, losses.



Reference: Metropolitan Museum of Art, Iranian Jar from Collection of Mr. & Mrs. Isaac D. Fletcher, bequest 1917, accession #17.120.105 for a comparable although smaller example.

210 Four Asian Porcelain Items

Four Asian porcelain items including a Chinese export style covered jar. 6" high, 2" wide to 9 3/4" diameter. Condition: bowl with hairline crack.

**211 Japanese Kutani Porcelain Figure of a Sage**

Japanese Kutani porcelain figure of a sage, circa 1900. 17 1/2" high, 8 1/2" wide. Condition: crazing, loss to little toe, a couple of small glaze scratches to base, firing cracks.

**212 Five Chinese Carved Hardstone Snuff Bottles**

Five Chinese carved hardstone snuff bottles, 20th century, in various animal and figural designs, comprising lapis, rose quartz, jade, malachite and ruby matrix with stands. 2 1/2" high, 1 7/8" wide to 3" high, 1 7/8" wide.



October Fall Fine Estates Auction 10/5/2014**LOT #****213 Fine Chinese Porcelain Vase**

Fine Chinese porcelain vase, with flaring neck decorated with lotus blossoms and foliage in multiple colors. 15 3/4" high. Condition: firing crack in neck interior, enamel wear, glaze chip to base.

**214 Pair Egyptian Applique Fabric Panels**

Pair of Egyptian applique fabric panels. Framed, not examined out of frame. Panels approximately 53" high, 19" wide. Condition: losses.

**215 Five Chinese Carved Hardstone Snuff Bottles**

Five Chinese carved hardstone snuff bottles, 20th century, in various animal and figural designs, comprising malachite, jade and rose quartz, with stands. 2 1/2" high, 1 3/4" wide to 2 3/4" high, 2" wide.

**216 Chinese Carved Hardwood Bone Inlaid Stand**

Chinese carved hardwood and bone inlaid stand, the square top extensively inlaid with a landscape scene within a double border of dragons, bats, birds, deer and foliage, over a galleried apron of turned spindles, raised on shaped inlaid legs enclosing a lower shelf carved with butterflies and Shou motif. 7" high, 17" wide, 17" deep. Condition: losses to inlay and several spindles.

**217 Pair Large Asian Porcelain Imari Style Urns**

Pair of large Asian porcelain Imari style urns, 20th century. 16" high, 11" wide.

**LOT #****218 Two Chinese Glazed Earthenware Bowls**

Two Chinese glazed earthenware bowls, in the form of fruit, with multi-colored glazes. Each approximately 5" high, 5 1/2" diameter.

**219 Chinese Archaistic Overlaid Bronze Wine Vessel**

Very fine Chinese archaistic overlaid bronze ritual wine vessel (You) in the manner of the early Western Zhou dynasty. The lidded bronze vessel with 24K gold and silver overlay, of pear form cast with flanges on a flaring base and having a swing handle terminating in Qilin masks, body boldly decorated with Taotie masks and bands of stylized dragons in relief, with hatched detail to underside of base. 11" high (excluding handle), 8 1/2" wide, 6 1/4" deep, 13 1/2" high with handle. Condition: oxidation, losses to base.



Chinese ritual bronzes were used in offerings of food and drink to ancestors in family temples, ceremonial halls or at ritual banquets in which living and deceased members participated. They were eventually buried with the owner so he could continue to pay his respects in the afterlife.

220 Pair Chinese Double Peacock Plates

Pair of Chinese double peacock plates, with peacocks and flowering peonies, the rims florally decorated. 9" wide. Condition: one with crack and chips to rim.

**221 Asian Imari Style Porcelain Umbrella Stand**

Asian Imari style enameled porcelain umbrella stand. 24" high, 9 1/2" diameter.

**222 Five Chinese Carved Hardstone Snuff Bottles**

Five Chinese carved hardstone snuff bottles, 20th century, in various animal and figural designs, comprising lapis, malachite, jade and ruby matrix, with stands. 2 5/8" high, 1" wide to 2 5/8" high, 2 1/8" wide.



October Fall Fine Estates Auction 10/5/2014**LOT #****223 Pair of Chinese Porcelain Enameled Food Containers**

Pair of Chinese porcelain enameled food containers, 19th century, on wood stands. 8 1/2" high, 7 1/2" wide. Condition: gilt, enamel wear, loss, chips.

**224 Chinese Carved Hardwood & Marble Low Table**

Chinese carved hardwood and marble low table, the rectangular top with beaded edge and inset twin marble panels, over an open carved apron with prunus blossoms, raised on carved cabriole legs joined by shaped stretchers. 20" high, 35 1/2" wide, 20 1/2" deep.

**225 Japanese Blue and White Porcelain Bowl**

Japanese blue and white porcelain bowl, 20th century, four character mark on base. 4" high, 10" diameter. Condition: chips.

**226 Chinese Carved Hardstone Covered Urn/Stand**

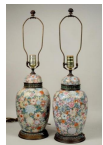
Chinese carved hardstone covered urn, 20th century, in shades of mottled pink and green with ring handles on wood stand. 9" high, 4" wide.

**227 Four Chinese Carved Hardstone Snuff Bottles**

Four Chinese carved hardstone snuff bottles, 20th century, in various animal and floral designs, comprising jade and malachite, with stands. 2 1/4" high, 1 1/8" wide to 2" high, 1 3/4" wide.

**228 Pair Chinese Porcelain Urn Lamps**

Pair of Chinese porcelain urn lamps with floral enameling on a gilt ground. 12" high, 6" wide.

**LOT #****229 Chinese Celadon Jade Carved Hanging Covered Urn**

Chinese celadon jade carved hanging covered urn, pierced plaque at top with two suspension chains supporting lotus form urn with crane and lotus lid, chains ending with urn drops. 10" long, 3 1/2" wide. Condition: one small ding or inclusion to one side of urn.

**230 Chinese Bronze Urn**

Chinese bronze urn, 19th/20th century, with two inlaid metal bands and three bands of incised characters and decoration, animal form handles on raised foot, 10 1/4" high, 6 3/4" wide. Condition: dents to lower body, paint residue.

**231 Chinese Porcelain Enameled Charger**

Chinese porcelain enameled charger, 19th century. 13 3/4" diameter. Condition: gilt, enamel wear.

**232 Four Chinese Carved Hardstone Snuff Bottles**

Four Chinese carved hardstone snuff bottles, 20th century, in various animal and figural designs, comprising jade, malachite and ruby matrix, with stands. 2" high, 1 3/4" wide to 2 1/2" high, 1 3/4" wide.

**233 Chinese Blue/White Vase/Stand**

Chinese blue and white porcelain vase, 18th/19th century, signed, on wood stand. 7" high, 4 1/4" wide.

**234 Chinese Porcelain Famille Rose Vase**

Chinese porcelain Famille Rose vase, with Mandarin decoration, of tapering rectangular form, decorated with family scenes in reserves on a ground of multi colored blossoms, the shoulders with mask and ring lugs. 16" high.



October Fall Fine Estates Auction 10/5/2014**LOT #****235 Five Chinese Carved Hardstone Snuff Bottles**

Five Chinese carved hardstone snuff bottles, 20th century, with various animal designs, comprising yellow and green jade, rose quartz and malachite, with stands. 2 1/4" high, 1 3/4" wide to 3" high, 2" wide. Condition: rose quartz stopper with detached spoon.

**236 Chinese Dao Guang Blue/ White Porcelain Bowl/Stand**

Chinese Dao Guang blue and white porcelain bowl on wood stand, circa 1825 - 1850. 2 1/2" high, 5 3/4" diameter.

**237 Five Chinese Carved Hardstone Snuff Bottles**

Five Chinese carved hardstone snuff bottles, 20th century, with various animal and figural designs, comprising malachite, labradorite, rose quartz, jade and tigers' eye, with stands. 2 1/4" high, 1 1/2" wide to 2 7/8" high, 2" wide.

**238 Large Chinese Cobalt Blue Porcelain Vase**

Large Chinese cobalt blue glazed vase with white interior. 26 1/2" high, 12" wide. Condition: a couple of tiny rim chips.

**239 Two Chinese Blue/White Dishes**

Two Chinese blue and white dishes, both florally decorated, the smaller with indistinct four character mark. The larger 12" diameter, the smaller 9 3/4" diameter. Condition: larger with glaze chips to rim, edge chip, hairline crack to rim approximately 2" long, foot chip.

**240 Five Chinese Carved Hardstone Snuff Bottles**

Five Chinese carved hardstone snuff bottles, 20th century, in various figural and animal designs, comprising amethyst, rose quartz, jade and malachite, with stands, 2 1/2" high, 1" wide to 2 1/2" high, 2 1/8" wide.

**LOT #****241 Glass Coffee Table with Shaped Top**

Glass coffee table with shaped top, gilt metal leaf form legs. 17" high, 21 1/4" wide, 52" long. Condition: chips to glass. Includes two additional legs.

**242 Five Chinese Carved Hardstone Snuff Bottles**

Five Chinese carved hardstone snuff bottles, 20th century, in various animal and figural designs, comprising lapis, jade, labradorite and rose quartz, with stands. 2 1/2" high, 7/8" wide to 2 3/4" high, 2" wide.

**243 Large Painted Sheet Metal Coach Form Inn Sign**

Large painted sheet metal inn sign, 20th century, depicting a coaching group. 29 1/2" high, 47" long. Condition: small areas of paint loss, a few bends to metal.

**244 American Hepplewhite Style Mahogany Sideboard**

American Hepplewhite style inlaid mahogany sideboard, 20th century, in the Baltimore style. 39 1/2" high, 76" wide, 24 1/2" deep. Condition: refinished, scratches, stains to top.

**245 American Painted Two Door Cupboard**

American painted two door cupboard, 19th century, in blue paint having two paneled doors, three interior shelves on cutout base. 48" high, 37 1/2" wide, 17" deep. Condition: use wear, paint wear, loss, age cracks.

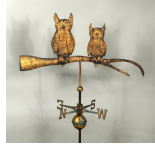
**246 American Sack Back Windsor Arm Chair**

American sack back Windsor arm chair, bowed top and shaped seat, 19th century. 37" high, 25" wide, 16" deep. Condition: traces of paint, refinished, some old breaks, loss of height to back legs.



October Fall Fine Estates Auction 10/5/2014**LOT #****247 Copper Full Bodied Double Owl Weather Vane**

Copper full bodied owl weathervane with two owls perched on a branch, circa 1930, in apparently original gold leaf with cast iron directionals. Vane 21 1/2" high, 33 1/2" long, 1" deep. Condition: wear from exposure to elements, dent to small tree branch.

**248 American Country Painted Two Part Pewter Cupboard**

American country painted two part pewter cupboard, 19th century, having a molded cornice over two arched glazed cupboard doors, salmon interior with plate rails over base having three drawers over two paneled doors, interior in pale mauve on bracket base. 87" high, 63" wide, 19 1/2" deep. Condition: cracks to one glass pane, one porcelain knob chipped, a few small losses to paint.

**249 2 English Biscuit Barrels & 3 Teapots**

Two English biscuit barrels and three teapots. 6 1/2" high, 4 1/4" wide to 7 1/2" high, 9 1/2" wide. Condition: chips, cracks, repair.

**250 Pair of Empire Style End Tables**

Pair of Empire style end tables, each with white marble top over a frieze drawer above two drawers and lower shelf. 29" high, 23 1/2" wide, 14 1/2" deep.

**251 Hepplewhite Inlaid Mahogany Swell Front Chest**

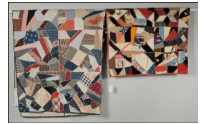
Hepplewhite inlaid mahogany swell front chest, with inlaid top edge above four graduated long drawers and set on flaring French feet. 33" high, 41 1/2" wide, 23 1/2" deep. Condition: sun bleached, some repairs to feet, use and age wear, losses.

**LOT #****252 Early English Oak Chest w/Paneled Drawers**

Early English oak chest with three paneled drawers on bracket base. 38" high, 39" wide, 22 1/4" deep. Condition: small crack to right edge, stains.

**253 Two Victorian Crazy Quilts**

Two Victorian crazy quilts, 19th century, comprising a Kentucky cotton quilt, circa 1870 and a velvet quilt. 64" long, 44" wide to 75" long, 84" wide. Condition: stains, wear, tears, losses.

**254 Aaron Willard Federal Gilt & Mahogany Banjo Clock**

Aaron Willard presentation gilt and mahogany Federal banjo clock, 19th century, eagle finial over brass cased painted dial, gilt case with reverse painted vertical foliate panel over larger painted panel of Neptune in chariot driving hippocampus, ending in gilt fluted base with acorn finial. 41 1/2" high, 10" wide, 4" deep. Condition: small crack to upper area of vertical panel, gilt wear, loss, a couple chips to case, repair to eagle's wing, a little reverse paint loss.

**255 American Queen Anne Candlestand**

American Queen Anne candlestand with tole painted decoration, top with cabbage rose and leaves on a black ground on turned column and tripod base with faux marbling. 26 1/4" high, 13 1/2" wide, 14" deep. Condition: scratches, paint wear, loss, restoration, crack, loss to one leg at join, table askew due to cracked leg.

**256 Queen Anne Mahogany Two Part Beveled Mirror**

Queen Anne mahogany two part beveled mirror, 18th century. 41" high, 16 1/2" wide. Condition: age cracks, losses.



October Fall Fine Estates Auction 10/5/2014**LOT #****257 Massive Primitive Double Ox Yoke**

Massive primitive double ox yoke, with faded blue paint and heavy iron ring, American, 19th century, 29" high, 63" long. Condition: losses, abrasions, old repair.

**258 American Chippendale Four Drawer Chest**

American Chippendale maple four drawer chest having four graduated drawers on a bracket base. 36" high, 41 1/4" wide, 20 1/2" deep. Condition: stains, marring to top, losses.

**259 Sheet Metal Swordfish Weathervane w/Iron Bill**

Sheet metal swordfish weathervane with iron bill, 19th/20th century, in old gold leaf surface. 7 1/4" high, 34 1/2" long. Condition: wear from exposure to elements, losses.

**260 American Sheraton Mahogany Commode Chest**

American Sheraton mahogany commode chest having a shaped top over one drawer, two cupboard doors below with fluted column supports and side handles. 27 1/2" high, 26" wide, 19" deep. Condition: age crack, fading to top, drawer with edge loss, veneer cracks to cupboard doors.

**261 Pennsylvania Sheraton Cherry Wood Tall Chest**

Pennsylvania Sheraton cherry wood tall chest, having a shaped cornice over narrow barber pole inlay, two narrow horizontal short drawers flanking central locking drawer over six graduated locking drawers on turned feet, old label verso from David Ordway Antiques, 329 2nd Ave, NYC. 66 1/2" high, 42" wide, 21 1/2" deep. Condition: finish wear, loss, age cracks, small losses, restoration.

**LOT #****262 American Hepplewhite Pembroke Table**

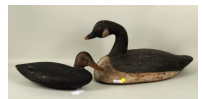
American Hepplewhite Pembroke table having a shaped top over one drawer on tapered legs. 27 1/2" high, 22" wide (closed), 33" wide (open), 40" deep. Condition: scratches, marring to top, chips, edge wear.

**263 Hepplewhite Maple Two Drawer Stand**

Hepplewhite maple two drawer stand, front with tiger maple rails. 29" high, 20 1/2" wide, 20 1/4" deep. Condition: top needs re-gluing, protruding screw in back leg, edge chips, age crack to top.

**264 Two Waterfowl Decoys**

Two waterfowl decoys, 19th/20th century, comprising a Canadian goose and a duck. 16" long, 7" wide to 20 1/2" long, 8 1/2" wide. Condition: wear from exposure to elements, age cracks, losses.

**265 Sheraton Two Drawer Stand**

Sheraton two drawer stand with square top on turned legs. 28 3/4" high, 20" wide, 16 1/2" deep. Condition: scratches, marring to top.

**266 Large Bennington Ribbed Jug**

Large Bennington ribbed jug, 19th century, purchased from James Julia, late 1990s. 9 3/4" high, 11" wide. Condition: rim cracks, one restored rim crack.

**267 Two Bird Decorated Stoneware Jugs and a Crock**

Two bird decorated stoneware jugs and a crock, 19th century, one stamped "Keene, NH", one "Albany, NY". 9 1/2" high, 10" wide to 15 1/2" high, 10" wide. Condition: crock with cracks.



October Fall Fine Estates Auction 10/5/2014**LOT #****268 American Stained Pine and Maple Pie Safe**

American stained pine and maple pie safe, 19th century, single board top over long drawer with two punched tin decorated doors below, two interior shelves on straight legs. 48" high, 40 1/4" wide, 14 1/4" deep. Condition: stains, scratches, age cracks, losses.

**269 Hepplewhite Cherry Wood Slant Front Desk**

Hepplewhite inlaid cherry wood slant front desk, with fitted interior and four graduated long drawers above French feet, Connecticut, late 18th century. 42" high, 40" wide, 21" deep, 35" deep (open). Condition: use and age wear, some repairs, missing slide pulls, losses, lid possibly later.

**270 Thirteen Country Store Advertising Tins**

Thirteen country store advertising tins, 19th century, including "Mammys" favorite brand coffee, the Planters Pennant Peanuts, Bensdorf cocoa, Tiger chewing tobacco and others, 3 1/4" high, 1 3/4" diameter to 19 1/2" high, 17" wide. Condition: paint wear, loss, soiling, dings, scratches, dents, some with grease residue, rust, breaks.

**271 Sheraton Style Two Pedestal Mahogany Dining Table**

Sheraton style two pedestal mahogany dining table with reeded saber legs and urn columns, top with reeded edge, fitted with three leaves. 29" high, 74" long without leaves to 152" with three leaves. 59" deep. Condition: significant restoration, bases possibly Baltimore with added height to columns and restored blocks and bracing, top possibly associated.

**LOT #****272 Chippendale Mahogany Mirror**

Chippendale mahogany mirror with gilt pierce carved shell at top. 37" high, 19 1/2" wide. Condition: cracks, loss at bottom, repairs, silvering loss, loss to mirror glass upper right corner.

**273 Am. Sheraton Inlaid Mahogany Ladies' Writing Desk**

American Sheraton inlaid mahogany ladies' writing desk, 19th century, having two paneled doors over three short drawers, fold out writing surface over three graduated drawers on turned legs. 56 1/2" high, 40 1/2" wide, 18 3/4" deep, open 27" deep. Condition: losses to veneer, chips.

**274 Hepplewhite Style Mahogany Serpentine Server**

Hepplewhite style inlaid mahogany serpentine server, line inlaid top with serpentine front over a conforming base with a pair of cabinet doors flanking two long drawers, raised on line inlaid tapering legs ending in spade feet. 56" long, 21 1/2" wide, 36" high.

**275 American Sheraton Inlaid Mahogany Game Table**

American Sheraton inlaid mahogany "D" form card table, with inlaid details and oval inlaid lightwood panels in apron, reeded legs, North Shore Mass., circa 1810. 36" wide, 17 1/2" deep, 28 1/2" high. Condition: Veneer repairs and replacements, some missing inlays, finish crazing and wear of age and usage.

This table was a gift to the consignor's family in 1903 from Mr. & Mrs. Alfred Attmore Pope of Farmington, Connecticut, whose residence "Hill Stead" is now a museum.



October Fall Fine Estates Auction 10/5/2014**LOT #****276 "The Swift Mill" Cast Iron Coffee Grinder**

"The Swift Mill" cast iron coffee grinder by Lane Brothers, Poughkeepsie, NY, 19th century, #14, in old red and black paint. 20 1/2" high, 14" wide. Condition: paint wear, loss.

**277 Kittinger Company Terrestrial Globe on Stand**

Kittinger Company terrestrial globe on carved mahogany stand, 20th century, printed by W & A.K. Johnston, Edinburgh, Scotland. 39 1/2" high, 21" wide. Condition: stains, soiling, some losses.

**278 American Pine and Maple Tall Case Clock**

American pine and maple tall case clock by Silas Hoadley, 19th century, with scrolled arched top over arched glazed door, hand painted dial with Masonic crest, signed "Silas Hoadley, Plymouth, Conn.", straight case on base with cutout apron. 85 1/2" high, 18 1/4" wide, 11" deep. Condition: age cracks, stains, wear, losses.

**279 American Sheraton Tiger Maple Tall Post Bed**

American Sheraton tiger maple tall post bed with acorn tops and ring turned posts. 78 1/2" high, approximately 53 1/2" wide, approximately 73" long. Condition: stains, wear, losses, holes drilled in tops for canopy.

**280 Queen Anne Cherry Wood Highboy Base**

Queen Anne cherry wood highboy base, with one long drawer and a fan drawer, cabriole legs and claw/ball feet, Connecticut, 18th century. 36" high, 38" wide, 20" deep. Condition: later top on original base, dings, mars and scratches.

**LOT #****281 Group Classical Concrete Garden Statues**

Assembled group of four classical cast concrete garden statues with bases together with St. Francis figure and an additional base. 21" high, 6" wide to 40" high, 10 1/2" wide. Condition: wear from exposure to the elements.

**282 Set 12 Congress Hall Replica Federal Dining Chairs**

Set of twelve Congress Hall replica Federal dining chairs, American Federal Classics (TM), 20th century replicas of Congress Hall chairs, the originals made for Congress Hall in Philadelphia circa 1790, comprising four arm chairs and eight side chairs upholstered in Edelman embossed leather. 39" high, 24" wide, 20 1/2" deep. Condition: some dings and a few small marred areas to leather.

**283 Pair American Bow Back Windsor Side Chairs**

Pair of American bow back Windsor side chairs in old finish. 34 1/2" high, 15 1/2" wide, 16 1/4" deep. Condition: wear, chips, cracks, alligating to finish.

**284 American Country Bannister Back Side Chair**

American country Bannister back side chair with splint seat. 42" high, 19 1/2" wide, 13" deep. Condition: age and usage wear, some looseness, chips, losses.

**285 One Drawer Country Pine Coffee Table**

One drawer country pine coffee table, 19th century. 21" high, 51" wide, 28 1/2" deep. Condition: age cracks, worm damage, stains, marring to top, cut down.



October Fall Fine Estates Auction 10/5/2014**LOT #****286 Continental Neoclassical Gilt/Gesso Bilbao Mirror**

A very fine and rare Continental neoclassical gilt & gesso Bilbao mirror with faux marble mountings and with central urn and floral spray, engaged half columns at side and scrolling vines at the base, European, early 19th century. 54" high, 21" wide. Condition: flaking decoration, oxidation, losses, replaced backboard, added supports to back.

**287 English Queen Anne Style Dresser Base**

English Queen Anne style oak dresser base, the rectangular top with molded edge over three drawers above a shaped apron, raised on short cabriole legs with shell carved knees ending in pad feet. 66" long, 20 1/2" deep, 29 1/2" high.

**288 Pair Italian Neoclassical Style Marquetry Commodes**

Pair of Italian neoclassical style marquetry commodes, each with a rectangular cross-banded top centering a floral medallion, over a case of two short over two long foliate marquetry drawers. 44" wide, 17" deep, 33" high.

**289 Nest of Three Directoire Style Marble Top Tables**

Nest of three Directoire style marble top tables, each with pierced brass gallery and painted black with gold chinoiserie. the largest 23 3/4" high. 25 1/2" wide, 15 1/2" deep.

**290 Hepplewhite Style Dining Table, Three Leaves**

Hepplewhite style inlaid mahogany round dining table with extension mechanism and three leaves, inlaid apron and square tapering legs, in the Baltimore tradition, 20th century. 49 1/2" diameter (closed), 88 1/2" long with leaves, 30 1/4" high. Condition: chips, scratches, dents, loose veneer, crazed finish.

**LOT #****291 Jacobean Style Oak Court Cupboard**

Jacobean style oak court cupboard, 19th century, having a carved cornice supported by turned columns and two carved doors over single carved drawer below, flanked by carved panels on straight legs. 62 high, 52 1/2" wide, 24 1/2" deep. Condition: age cracks to top, upper left door does not stay closed, finish wear, loss.

**292 Set of Ten Spanish Baroque Style Dining Chairs**

Set of ten Spanish Baroque style dining chairs, high backed with carved finials and pierced carved front stretchers, upholstered in multi-colored abstract tapestry, comprising two arms and eight side chairs. arms 25 1/4 wide, 24" deep, 45" high.

**293 Pair Dutch Triangular "Handkerchief" Game Tables**

Pair antique Continental Queen Anne style mahogany game tables, each having a triangular top with shaped corners opening to a green leather playing surface supported by a retractable rear leg, on slender cabriole legs ending in pad feet. Possibly Anglo-Dutch, with restorations. 28 1/2" high, 36 1/2" wide, 18" deep closed, 31 1/2" wide, 36" deep open

**294 Pair Venetian Paint Decorated & Gilt Side Chairs**

Pair Venetian paint decorated and gilded side chairs, having open foliate carved balloon backs on tapered foliate carved legs. 36 1/2" high, 18" wide, 15 1/2" deep. Condition: paint, gilt wear, loss, age cracks, break to one back rail.

**295 Pair Regency Inlaid Satinwood & Mahogany Bookcases**

Pair Regency inlaid satinwood and mahogany bookcases, first half of 19th century, each case with central jasperware figural frieze at top flanked by two figural cameos amid painted ribbon and swag decoration, vertical stiles with gilt metal floral and tassel mounts, two inlaid shelves in interior, top and bottom horizontal stiles having floral and gilt metal banded decoration on rectangular bases. 39 1/4" high,



October Fall Fine Estates Auction 10/5/2014**LOT #**

54" wide, 16 3/4" deep. Condition: scratches to top, age crack to tops, chips, losses, partially detached metal beaded strip.

296 Set 8 Hepplewhite Style Heart Back Side Chairs

Set of eight Hepplewhite style mahogany heart back form side chairs, 20th century, upholstered in green silk. 38" high, 19" wide, 18" deep. Condition: a few small upholstery stains.

**297 George III Style Serpentine Mahogany Commode**

George III style serpentine mahogany commode, the serpentine top with carved front corners over a conforming case of three drawers with brass mounts and Egyptian revival hardware. 40" long, 22 1/2" deep, 35" high. Condition: losses, damage and repairs.

**298 George III Inlaid Mahogany Swell Front Chest**

Georgian inlaid mahogany swell front chest, England, late 18th century, with cross banded top above two small and three graduated long drawers, set on flaring later French feet with shaped apron. 42 1/2" high, 45" wide, 21 1/4" diameter. Condition: repairs, losses and restorations.

**299 Continental Style Painted & Gilded Mirror**

Continental style painted and gilded mirror with Chinoiserie decoration. 37" high, 27 1/2" wide. Condition: a few small areas of gilt loss.

**300 Louis XVI Style Serpentine Console Table**

Louis XVI style serpentine console table, 20th century. 31" high, 65 1/2" wide, 19 1/2" deep. Condition: scratches, finish wear, loss, chipping, small losses to legs.

**LOT #****301 Important George III Eglomise Mahogany Cabinet**

An important George III eglomise and inlaid mahogany cabinet, with diamond mullioned glass doors with black and gilt eglomise diamond shaped inset panels, above a base with two inset paneled doors with oval string inlays and set on French feet with a shaped apron. English, early 19th century. 96" high, 48" wide, 22" deep. Condition: some repairs, scuffs and mars, age and usage wear.

**302 Regency Caned Mahogany Cradle**

Regency caned mahogany cradle, 19th century, on turned stand with brass fittings, interior with tufted velvet mattress and pillow. 40 1/2" high, 40 1/2" wide, 22 1/4" deep. Condition: a few losses to cane, frame wobbly, missing caster wheels.

**303 Hepplewhite Style Inlaid Mahogany Server**

Hepplewhite style inlaid mahogany one drawer server, 20th century. 36" high, 45" wide, 20 1/2" deep. Condition: two plugged holes at top back, probably previously with backrail, a few small scratches to top.

**304 Louis XVI Style Cylinder Desk/Side Chair**

Louis XVI style cylinder desk, rosewood banded, with a fitted interior compartment over three drawers with floral marquetry, together with a mahogany Continental rococo style side chair 35 1/2" wide, 18" deep, 38" high.

**305 Pair Italian Rococo Gilt Mirrors**

Pair of Italian Rococo gilt mirrors. 27" high, 16" wide.



October Fall Fine Estates Auction 10/5/2014**LOT #****306 Old Master School, Figural Study**

Old Master school, 17th/18th century, figural study, oil on canvas, framed and unsigned. Sight size: 27 1/2" high, 24" wide, frame size: 32 1/4" high, 29" wide; possibly cut from larger painting. Condition: relined, restoration.

**307 Set Four Venetian Carved Fruitwood Arm Chairs**

Set of four Venetian carved fruitwood arm chairs having shell crests and pierced backs, upholstered in brown silk moire. 40 1/2" high, 23 1/2" wide, 18" deep. Condition: one with loose arm, needs regluing, stains to seat cushions.

**308 Pair George III Inlaid Mahogany Console Tables**

Pair of George III inlaid mahogany console tables of pentagonal shape on tapered legs ending in spade feet. 30" high, 32 1/2" wide, 12" deep. Condition: buckling, losses to inlay, restoration, one leg detached.

**309 Set Eight George III Carved Mahogany Dining Chairs**

Set of eight George III carved mahogany dining chairs, having pierce carved back splats with Prince of Wales plume, comprising two arm and six side chairs. 35 1/2" high, 20 1/2" wide, 16" deep to 36" high, 23" wide. Condition: age cracks, chips, losses, restoration.

**310 Georgian Swell Front Inlaid Mahogany Sideboard**

Georgian swell front inlaid mahogany sideboard having two central drawers flanked by two shorter drawers on tapered legs ending in spade feet. 34 1/2" high, 60" wide, 29 1/4" deep. Condition: losses to inlay, stains, marring to top, restoration.

**LOT #****311 Pair of Louis XV Style Fauteuils**

Pair of Louis XV style fauteuils, with shell and acanthus carved crests and upholstered in pale green damask. 35 1/2" high, 26 3/4" wide, 20" deep.

**312 George III Mahogany Chest**

George III mahogany chest, two short drawers over three graduated drawers on cutout base. 41" high, 40 3/4" wide, 17 1/2" deep. Condition: stains, marring to top, losses, restoration.

**313 Venetian Style Painted Two Door Armoire**

Venetian style painted two door armoire having a faux marbled cornice over doors painted with Venetian scene. 81 1/2" high, 45 1/2" wide, 16" deep. Condition: scattered paint loss, restored area above right handle.

**314 George III Round Top Mahogany Candlestand**

George III mahogany candlestand having a round top on turned support ending in pad feet. 27 1/2" high, 23 1/2" diameter. Condition: scratches.

**315 Rare Pair Early Queen Anne Side Chairs**

Rare pair of Early Queen Anne side chairs with vasiform splats surmounted by heart cut-outs, trapezoidal slip seats within shaped and molded front rails, raised on front cabriole legs with domino returns ending in Spanish feet, first half 18th century. 41" high, 22" wide, 19" deep. Condition: numerous old repairs to structural elements of both chairs, as is.



October Fall Fine Estates Auction 10/5/2014**LOT #****316 Queen Anne Style Two Pedestal Dining Table**

Queen Anne style mahogany two pedestal dining table with molded edge, on turned pedestals ending in pad feet. 29" high, 51 1/4" wide, 34 1/4" deep. Condition: scratches to top, age cracks, repairs to bases.

**317 English Queen Anne Drop Leaf Dining Table**

English Queen Anne mahogany drop leaf dining table, top with rounded corners on pad feet. 28 1/2" high, 48 1/2" deep, 18" wide (closed), 52" wide (open). Condition: age cracks, stains, marring to top, restoration.

**318 Georgian Style Carved Mahogany Tea Table**

Georgian style carved mahogany tea table, the shaped molded shell carved top tipping on an acanthus carved column standard, raised on a foliate carved tripod base ending in ball and claw feet, earlier 20th century. 29" high, 29 1/2" diameter.

**319 Regency Style Mahogany Two Pedestal Dining Table**

Regency style mahogany double pedestal dining table, early 20th century, with turned columnar supports and arched, molded sabre legs with casters, the top with rosewood cross banding and figured mahogany veneer, together with two assembled matching leaves and one plain additional leaf, two leaf rods and custom table pads. 64" long without leaves, 100" long with two finished leaves, 124" long with third leaf, 44" wide, 29" high. Condition: some restorations and repairs, finish roughness, color and finish variations between table and leaves.

**320 George III Inlaid Mahogany Banjo Barometer**

George III satinwood inlaid mahogany banjo barometer signed "M. Salla Preston" with silvered dial and whelk inlay. 38" long, 10" wide. Condition: use wear, restoration, losses, age cracks.

**LOT #****321 Set Six Mahogany Chippendale Style Dining Chairs**

Set of six mahogany Chippendale style dining chairs, 20th century, upholstered in striped silk, comprising two arm and four side chairs. 37" high, 21 1/2" wide, 18" deep to 37 1/2" high, 23 1/2" wide, 19" deep. Condition: a few upholstery stains.

**322 William & Mary Joined Oak Chest of Drawers**

William and Mary joined oak chest of drawers, the rectangular molded top over a narrow double paneled drawer above three deep drawers with geometric molded panels, the sides paneled, on a later bracket base, late 17th/early 18th century and later. 40 1/2" high, 39 3/4" wide, 24" deep. Condition: repairs and restoration, later losses.

**323 George III Tilt Top Table**

George III tilt top table with square shaped top and reeded edge on turned stem and tripod base. 29" high, 19 1/2" wide. Condition: scratches, small edge losses to top.

**324 Classical Carved & Gilded Convex Mirror**

Classical carved and gilded convex mirror, 19th century, ebonized eagle mount with gilt ball suspension over mirror and carved and gilded ornamentation below. 45" high, 25 1/4" wide. Condition: restoration, losses, age cracks to liner.

**325 Pair of Louis XVI Style Giltwood Fauteuils**

Pair of Louis XVI style giltwood fauteuils, with square backs with ribbon crests and caned oval panels, over caned seats with loose velvet cushions. 23 1/2" wide, 19" deep, 38" high.



October Fall Fine Estates Auction 10/5/2014**LOT #****326 William IV Tufted Leather Arm Chair**

William IV tufted leather arm chair having an open circular back with turnings, turned hand grips and legs on casters. 30 1/2" high, 25 3/4" wide, 24" deep. Condition: wear, stains to leather.

**327 Pair of Louis XV Style Bombe Parquetry Commodes**

Pair of Louis XV style bombe parquetry commodes, each with a gray marble top over a case of three drawers with ormolu mounts, 35" wide, 20" deep, 32" high.

**328 Empire Style Mahogany & Velvet Settee**

Empire style mahogany and red velvet settee, upholstered in striped velvet on paw feet. 36 1/2" high, 63 1/2" wide, 24" deep.

**329 Spanish Colonial Baroque Style Dining Table**

Spanish Colonial Baroque style dining table, thick rectangular top on carved and molded shaped trestle supports with scrolling iron braces. 29 1/4" high, 78 3/4" long, 39" deep.

**330 Set Eight Spanish Colonial Style Dining Chairs**

Set of eight Spanish Colonial style dining chairs, painted red and gold with high backs, shaped crests and splats over rush seats raised on ring turned legs. 44" high, 19 1/2" wide, 16" deep.

**331 Spanish Colonial Style Pine Fresquera**

Spanish Colonial style pine fresquera, the flat molded top with shaped finials over two pairs of paneled doors, the uppermost panels open latticed, on a molded base raised on sledge feet. 79" high, 46 1/2" wide, 22" deep.

**LOT #****332 Pair Regency Style Painted End Cabinets**

Pair Regency style painted end cabinets with floral decoration. 29" high, 20" wide, 18 1/4" deep. Condition: chips, small losses.

**333 Spanish Colonial Style Pine Sideboard**

Spanish Colonial style pine sideboard, thick rectangular top over a pair of open spindled doors flanked by fielded paneled doors, 35" high 74 3/4" long, 18" deep.

**334 Edwardian Decorated Satinwood Demilune Cabinet**

Edwardian satinwood painted demilune side cabinet, circa 1905, with classical decoration, left door top stamped H. Samuel, 484 Oxford St, D shaped top above a pair of cabinet doors flanked by side cabinet doors on square slightly flared legs. 33 1/2" high, 35 1/2" wide, 17 3/4" deep. Condition: age cracks, veneer cracks, crazing to painted panels.

**335 George III Mahogany Candle Stand**

George III mahogany candle stand on turned stem with tripod base. 30" high, 24 1/2" diameter. Condition: chips, small losses, stains, marring to top.

**336 Italian Rococo Style Writing Desk**

Italian rococo style writing desk, serpentine form and veneered throughout with olivewood, mahogany, and burl walnut, the desk with a long drawer flanked with pairs of short drawers, raised on cabriole legs. 31 3/4" high, 55 1/4" wide, 28" deep. Condition: losses and cracking to veneers.



October Fall Fine Estates Auction 10/5/2014**LOT #****337 Pair of George III Style Wing Chairs**

Pair of George III style wing chairs, 20th century. 41 1/2" high, 28" wide, 17 1/2 deep. Condition: stains, wear, tears to fabric.

**338 Spanish Baroque Style Dining Table**

Spanish Baroque style dining table with cutout legs and wrought iron stretcher. 31 1/4" high, 42" wide, 65 3/4" long (closed) 117" long (open). Condition: extensions with cracks, with marring to top.

**339 Set Four English Windsor Arm Chairs**

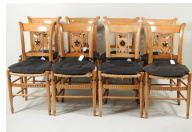
Set of four English Windsor arm chairs with pierce carved back splats, turned arm supports and legs. 36 1/6" high, 23" wide, 15 1/4" deep. Condition: age cracks, stains, repairs.

**340 Orientalist Papier Mache Tray on Stand**

Orientalist papier mache tray on stand, 19th century, with hand painted scene of figures on a bridge. 18 3/4" high, 22" wide, 30" long. Condition: crazing, paint, gilt wear, loss, restoration.

**341 Set Eight French Provincial Style Side Chairs**

Set eight French Provincial style side chairs, 19th/20th century, having pierce carved backs with an urn over ebonized star and paw feet below, on turned legs with carved front rail and seat pads. Has sales tag with price of \$4,000 for set, purchased from Le Trianon, Sheffield, MA. 33 1/2" high, 17" wide, 16" deep. Condition: a few with vertical cracks to carved panels.

**LOT #****342 Pair Rush Seat Church Chairs, St. Pauls**

Pair of Royal Chapel chairs made in 1874 for St. Pauls Cathedral England. 32" high, 16 1/2" wide, 16" deep.

**343 Early English Oak Four Drawer Chest**

Early English oak four drawer chest constructed in two sections for transporting. 42" high, 39 1/2" wide, 26 deep. Condition: age cracks, stains, repairs.

**344 Early English Oak Two Part Cupboard**

Early English oak two part cupboard with two open shelves above, two short drawers over cupboard doors below. 75" high, 43 1/2" wide, 19 1/4" deep. Condition: stains, worm damage, restoration.

**345 Edwardian Inlaid Ladies' Writing Desk**

Edwardian inlaid ladies' writing desk, lid with fan inlay over long drawer flanked by two short drawers, interior with two drawers and cubbies. 41 1/2" high, 32 1/2" wide, 18 1/2" deep (closed), 30 1/2" (open). Condition: veneer buckling, losses, scratches, restoration, one piece loose veneer.

**346 William & Mary Carved Beech Side Chair**

American or English William & Mary Flemish style carved beech side chair, 17th/18th century, arched foliate crest rail, caned back and seat, turned legs and stretcher on large Spanish feet. Ex. Luke Vincent Lockwood Collection. 47 1/2" high, 18" wide, 14 1/2" deep. Condition: damage to cane. This chair is illustrated in Luke Vincent Lockwood's "Colonial Furniture in America" and was formerly in his collection.



October Fall Fine Estates Auction 10/5/2014**LOT #****347 Edwardian Style Inlaid Satinwood Oval Etagere**

Edwardian style inlaid satinwood two tier oval etagere decorated with foliate garlands and musical instruments. 31" high, 35" wide, 21 1/2" deep.

**348 English Sheraton Mahogany Canterbury**

English Sheraton mahogany Canterbury on porcelain casters, 19th century. 19 3/4" high, 19" wide, 13 1/2" deep. Condition: age cracks, chips, restoration.

**349 George III Carved Mahogany Arm Chair**

George III carved mahogany arm chair having a straight crest rail, pierced urn splat, gently sloping arms on spade feet. 37 1/2" high, 20 1/4" wide, 17 1/2" deep. Condition: cracks, partial break to crest rail, chips, small losses, restoration.

**350 Pair Hepplewhite Carved Mahogany Side Chairs**

Pair possibly Scottish carved mahogany shield back side chairs, early 19th century. 37 1/2" high, 20 1/4" wide, 16" deep. Condition: some old breaks and repairs.

**351 George III Mahogany Ladies' Writing Table**

George III mahogany ladies' writing table with three drawers. 29 1/2" high, 31 1/2" wide, 22" deep. Condition: chips, marring to top.

**352 Small English Oak Joint Table**

Small English oak joint table with heart cutouts. 19" high, 11" wide (closed), 24" deep (open), 27" wide. Condition: age cracks, stains to top.

**LOT #****353 Italian Scabello Chair**

Italian Scabello chair, 19th century, fruit basket crest over pierce carved back flanked by griffins, foliate carved seat on pierce carved foliate supports, 49" high, 17" wide, 15 1/2" deep. Condition: chips, losses, age cracks.

**354 Pair of Egyptian Revival Giltwood Stools**

Pair of Egyptian revival giltwood stools, upholstered in possibly faux blue-green suede. 25" wide, 19 1/2" deep, 19 1/2" high.

**355 Early English Oak Coffre**

Early English oak coffre with incised date of 1716 and initials EC. 23 1/4" high, 47 3/4" long, 14 1/2" deep. Condition: worm damage, chips, losses.

**356 Sheraton Mahogany Card Table**

Sheraton Mahogany card table, the "D" shaped top with triple reeded edge opening on double fly legs, the tapering legs with reeded pilasters, 29" high, 36" wide, 17 3/4" deep, (35 1/2" deep top open).

**357 Louis XVI Style Parquetry Lingerie Chest**

Louis XVI style parquetry lingerie chest, marble top over a small drawer above a cabinet door opening to a shelved interior. 43 1/2" high, 15 1/2" wide, 16" deep. Condition: marble with chips, breaks to back right corner.

**358 James Gale Tyler, "Sailboat on Open Sea" O/C**

James Gale Tyler (CT, 1855-1931), "Sailboat on Open Sea", oil on canvas, signed lower left JG Tyler. Sight size: 9 3/4" high, 8" wide, frame size: 17 1/4" high, 15 1/2" wide.



October Fall Fine Estates Auction 10/5/2014

LOT

359 E. Norcross (Am. 1854-1923), "Two Ladies at Piano"

Eleanor Norcross (Massachusetts, 1854- 1923) framed oil on canvas of two ladies at the piano, signed and dated upper left corner "Eleanor Norcross, Paris, 1894". Sight Size: 50 1/2" long, 42" wide, frame size: 54" long, 45" wide. Condition: relined, a few small losses lower left.

**360 Attributed to SJE Jones, Pair Hunting Scenes**

Attributed to SJE Jones (English, active 1820-1855), 'Pheasant Hunting' and 'Grouse Hunting,' unsigned. Sight size: approximately 19 1/4" high, 23 1/4" wide. Frame size: 23 3/4" high, 27 1/2" wide. Condition: possibly relined, soiling, crazing, restoration.

**361 Cornelis Ruhtenberg, "Concert" Polymer on Canvas**

Cornelis Ruhtenberg (American, b. 1923), "Concert" 1968, polymer on canvas, gallery label verso. Sight size: 48" high, 32" wide.

**362 Painting, Seascape Oil/Canvas**

Seascape oil on canvas, probably American, probably early 20th century, shore scene with heavy surf breaking against a rock and rugged coastline with gulls, under a stormy sky. Sight size: 13 1/2" high, 23 1/2" wide.

**363 After M.J. Heade, "Orchids & Two Hummingbirds" O/B**

After Martin Johnson Heade (American, 1819-1904), "Orchids and Two Hummingbirds," pair of hummingbirds guarding their nest with orchid amid lush tropical foliage, oil on board, unsigned. Provenance: private New York collection. Sight size: 10" high, 8" wide.



LOT

364 Joseph Hirsch, "Toast", Lithograph

Joseph Hirsch (New York, 1910 - 1981), "Toast" lithograph, pencil signed artists proof. Framed, not examined out of frame. Sight size: 10 3/4" high, 12 1/2" wide. Condition: mat toning.

**365 Benjamin Williams Leader, O/C 'Cambria Coast'**

Benjamin Williams Leader, R.A. (English, 1831-1923), 'Cambria Coast' oil on canvas, signed lower left "B.W. Leader". Sight size: 11 1/2" high, 17 1/2" wide. Condition: crazing.

**366 Felicity Campbell, "Design for Greeting Card" O/B**

Felicity Campbell (English, 20th century), "Design for Greeting Card", oil on board, signed, dated lower left "F. Campbell 64" gallery label verso "the RI Galleries 195 Piccadilly, London". Sight size: 19 1/4" high, 15" wide. Condition: losses.

**367 Tomaso De Simone, Oil on Canvas**

Tomaso De Simone (Italian, active 1870-1900), 'An Admiralty Schooner of the White Squadron in the Bay of Naples' oil on canvas, signed, dated L.R. T D Simone 1869. One of a famous family of Neapolitan ship portraitists, Tomaso painted primarily in the Bay of Naples, often including Mt. Vesuvius. His work is often of British vessels. Exhibited: National Maritime Museum, London. Sight size: 19" high, 28" wide. Frame size: 27" high, 36" wide. Condition: relined, crazing, restoration.

**368 A.Nemethy, "General Sheridan on Horseback" O/C**

Albert Nemethy (American b. 1920), "General Sheridan on Horseback". According to the consignor, this work was exhibited at West Point Museum. Provenance: private New York collection. Sight size: 17 1/2" high, 40" wide.



October Fall Fine Estates Auction 10/5/2014**LOT #****369 Italian School, "Trompe L'oeil Still Life"**

Italian school, 18th/19th century, "Trompe L'oeil Still Life", oil on canvas, unsigned. Sight size: 24" high, 31 1/4" wide, frame size: 31 1/4" high, 37 3/4" wide. Condition: relined, restoration.

**370 Brenner, Austrian School, "Mountainous Landscape"**

Brenner, Austrian School, "Mountainous Landscape with a Chalet", late 19th, early 20th century, oil on canvas, signed lower right "L.R. Brenner". Sight size: 38 1/2" high, 28 1/2" wide.

**371 Possibly French School, 1920s' Portrait of Flapper**

Possibly French school, 20th century, '1920s' Portrait', oil on canvas, of a "flapper" girl, unsigned with Paris Preparers stencil verso. Sight size: 24 1/2" high, 18 1/2" wide, frame size: 32" high, 25 1/2" wide. Condition: light soiling, scattered dark spots.

**372 Two Similar Horse Portraits, 20th Century**

Two similar horse portraits, oil on canvas, 20th century, signed "P. English". Sight size: approximately 19 1/2" high, 23 1/2" wide. Condition: tiny white spot on dark horse's rump.

**373 J. Cordrey, "Coaching Scene" O/C**

John Cordrey (English, 1765-1825), "Coaching Scene" oil on canvas laid down on board, unsigned, with sales receipt from Tillou Gallery, Litchfield, CT, circa 1980's. Provenance: Duke of Portland collection. Sight size: 20 1/2" high, 28 1/2" wide. Condition: some restoration, small loss in sign on left, white spot in shrubbery on right.

**LOT #****374 English School, Equine Portrait, O/AB**

English school, equine portrait, late 19th/early 20th century, with chestnut gelding before a store building, a recumbent hound to his left, oil on artist board, old illegible paper label verso. Sight size: 17" high, 20 1/2" wide.

**375 Dutch Old Master Style Simulated O/C Floral**

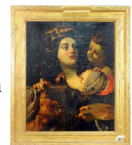
Dutch Old Master style simulated oil on canvas, "Floral Still Life", signed "Emillio Greco". Sight size: 35" high, 47" wide.

**376 European School Painting, Moonlight Landscape**

European school, 19th century, moonlight landscape scene with boats in a small bay with village and mountains, oil on canvas. Sight size: 16 1/2" high, 20" wide.

**377 Old Master School, "Mother & Child" O/C**

Old Master school, "Mother and Child" oil on canvas, unsigned, on verso "restored in 1932" and a label of Hannah Mee Horner, a restorer in Philadelphia, mounted in an Arts & Crafts style frame monogrammed ELC verso. Sight size: 27 3/4" high, 22 1/4" wide. Condition: relined, restoration, crazing.

**378 Two Similar Dog Paintings, 20th C.**

Two similar dog portraits, oil on canvas, 20th century, signed "Gleason". Sight size: approximately 11" high, 15 1/4" wide.

**379 European School, Pastoral Landscape O/C**

European school, 19th century, pastoral landscape with cattle on a small inlet, a ruined abbey in the distance, oil on canvas. Sight size: 23 1/2" high, 19 1/2" wide.



October Fall Fine Estates Auction 10/5/2014**LOT #****380 Still Life with Fruit, O/C**

Still life with fruit, 19th century, composition with a bird perched on an overflowing bowl of fruit, oil on canvas. Sight size: 14 1/2" high, 21" wide. Condition: losses.

**381 Painting of Horse, 20th C.**

Oil on canvas painting of a horse, 20th century, signed "P. English". Framed, not examined out of frame. Sight size: 29 1/4" high, 39 1/2" wide.

**382 Old Master School "Hen and Crock" Oil on Canvas**

Old Master School, "Hen and Crock", oil on canvas, unsigned. Sight size: 19 1/2" high, 25 3/4" wide, frame size: 24 1/4" high, 30" wide.

**383 Portrait of Older Gentleman, O/C**

Portrait of an older gentleman, shown bust length with long gray beard, attired in red, oil on canvas. Ownership label verso for James D. Smith, Linden Lodge, Stamford, CT., former president of the New York Stock Exchange and CT State Treasurer (1829 - 1909). Sight size: 17" high, 21 1/2" wide. Condition: substantial old losses

**384 Simulated O/C of Venetian Scene After Canaletto**

Simulated oil on canvas of Venetian scene after Canaletto, signed illegibly lower right. Sight size: 23" high, 35" wide.

**385 European School, Groom & Horses, O/C**

European school, 19th/early 20th century, unframed oil on canvas, with a groom and two horses with hounds. 18" high, 14" wide. Condition: small losses.

**LOT #****386 Belgian Machine Loomed Tabriz Style Carpet**

Belgian machine loomed Tabriz style carpet, 20th century. 11'6" long, 8'1" wide. All rugs sold "as is".

**387 Art Deco Chinese Room Size Rug**

Art Deco Chinese room size rug. 15' 7" long, 12' 10" wide. Condition: pile wear, stains. All rugs sold "as is".

**388 Chinese Room Size Carpet**

Chinese room size carpet, dark blue ground with central Pavillion design, cream floral primary border. 14'1" long, 10'1" wide. Condition: pile wear, loss, stains. All rugs sold "as is".

**389 Persian Kerman Room Size Rug**

Persian Kerman room size carpet. 11' 6" long, 8' 8" wide. Condition: pile wear, loss, one corner rotted with black mold on verso. All rugs sold "as is".

**390 Hamadan Rug**

Hamadan rug. 4' 10" long, 3' 5" wide. Condition: pile wear, loss, end, side losses. All rugs sold "as is".

**391 Two Sarouk Mats**

Two Sarouk mats, 19th century. Larger 2'5" long, 2'0" wide. Condition: pile wear, loss, end, side, losses. All rugs sold "as is".



October Fall Fine Estates Auction 10/5/2014**LOT #****392 Persian Silk Garden Prayer Rug**

Persian silk garden prayer rug, 20th century, central floral motif on a rust ground, white floral primary border.

49" long, 30 1/2" wide. Condition: pile wear, loose threads. All rugs sold "as is".

**393 Shirvan Area Rug**

Shirvan area rug, probably turn of the century. 4' 11" long, 4' 2" wide. Condition: pile wear, loss, side, end losses, holes. All rugs sold "as is".

**394 Turkish Mat**

Turkish mat, probably 19th century. 2'9" long, 1'9" wide.

Condition: pile wear, loss, side, end losses, hole. All rugs sold "as is".

**395 Chinese Blue and White Carpet**

Chinese blue and white carpet depicting eleven characters, signed, 19th century. 28" wide, 72" long. Condition: pile wear, edge losses, ends rebound, stains. All rugs sold "as is".

**396 Early Caucasian Rug**

Early Caucasian rug, probably Kuba, 19th century. 6'3" long, 3'9" wide. Condition: pile wear, loss, side, end losses, holes, repairs. All rugs sold "as is".

**397 Caucasian Rug**

Caucasian rug, probably 19th century. 5'3" long, 3'3" wide. Condition: pile wear, loss, side, end losses, hole. All rugs sold "as is".

**LOT #****398 Gabbeh Rug**

Gabbeh rug, 20th century. 5'11" long, 4'7" wide. Condition: pile wear, loss, side, end losses. All rugs sold "as is".

**399 Lillihan Rug**

Lillihan rug, probably early 20th century. 3'10" long, 2' 7" wide. Condition: pile wear, loss, side, end losses. All rugs sold "as is".

**400 Sarouk Runner**

Sarouk runner, floral designs on a red ground, blue floral primary border. 56" long, 28 1/2" wide. Condition: stains, pile wear, patches, losses. All rugs sold "as is".

**401 Fine Persian Carpet**

Fine Persian carpet, turn of the century. 6'3" long, 4'1" wide. Condition: pile wear, loss, side, end losses, holes. All rugs sold "as is".

**402 Sarouk Mat**

Sarouk mat having central floral ground, red floral primary border. 32 1/2" long, 25 1/2" wide. Condition: pile wear. All rugs sold "as is".

**403 Shirvan Rug**

Shirvan rug, turn of the century. 4'8" long, 3'1" wide. Condition: pile wear, loss, side, end losses. All rugs sold "as is".



October Fall Fine Estates Auction 10/5/2014**LOT #****404 Persian Rug, Possibly Senneh**

Persian rug, possibly Senneh, central octagonal boteh field on blue ground, red geometric primary border. 77" long, 59 1/2" wide. Condition: pile wear, end losses, sides with areas of detached binding, slight bleed in some areas, losses.

**405 Persian Gallery Rug**

Persian gallery rug, turn of the century. 9'0" long, 4'11" wide. Condition: pile wear, loss, end losses. All rugs sold "as is".

**406 Persian Room Size Carpet**

Large Persian room size carpet, central plum and beige medallion on a teal ground, teal floral primary border. 14' 6" long, 12' 1" wide. Condition: stains, pile wear, loss, repairs, small hole in central medallion. All rugs sold "as is".

**407 Caucasian Rug**

Caucasian rug, probably Kuba, turn of the century. 8' 9" long, 5'2" wide. Condition: pile wear, loss, end losses, holes. All rugs sold "as is".

**408 Persian Room Size Carpet**

Persian room size carpet, having a central medallion flanked by urns on a red floral ground, cream floral primary border. 15' 2" long, 9'10" wide. Condition: edge repair. All rugs sold "as is".

**409 Persian Silk Garden Rug**

Persian silk garden rug, 20th century, central meandering floral vase design on a rose ground, navy primary border. 48" long, 30 1/2" wide. Condition: pile wear. All rugs sold "as is".

**LOT #****410 Persian Runner**

Persian runner, 20th century, having two central medallions on a navy floral ground, red floral primary border. 84 1/2" long, 28 1/2" wide. All rugs sold "as is".

**411 Bokhara Rug**

Bokhara rug, 20th century, rose and white designs on a blue ground. 50 1/2" long, 31 1/2" wide. Condition: side separations. All rugs sold "as is".

**412 Chinese Rug**

Chinese rug, circa 1920, beige central floral field, navy floral border. 57 1/2" long, 36" wide. Condition: pile wear, losses. All rugs sold "as is".

**413 Persian Rug**

Persian rug having a central brown salmon and white floral medallion on a salmon ground, salmon and brown primary border. 66" long, 48 1/2" wide. Condition: pile wear, loss, end losses, stains, small edge cut. All rugs sold "as is".

**414 Chinese Rug**

Chinese rug, circa 1920, beige floral field, navy floral primary border. 55" long, 31" wide. Condition: pile wear, losses. All rugs sold "as is".

**415 Persian Silk Prayer Rug**

Persian silk prayer rug, central beige field with grape clusters and green foliage over hanging urn, blue floral primary border. 67 1/2" long 49 1/2" wide. Condition: pile wear, loss, restoration, two edge cuts, separations on right side. all rugs sold "as is".



October Fall Fine Estates Auction 10/5/2014**LOT #****416 Turkish Runner**

Turkish runner having various multicolored geometric designs on a red ground, narrow floral border. 18'6" long, 41" wide. Condition: pile wear, loss, holes, repair, bleeding, end, side losses. All rugs sold "as is".

**417 Room Size Agra Carpet**

Room size Agra carpet with green floral field, salmon floral primary border. 12' long, 9' wide. Condition: pile wear, a couple small pile losses. All rugs sold "as is".

**418 Persian Gallery Carpet**

Persian gallery carpet having a geometric floral pattern on a navy ground, beige floral primary border. 9'7" long, 63" wide. Condition: pile wear, end losses, end repair. all rugs sold "as is".

**419 Indian Chinese Style Rug**

Indian Chinese style rug, 20th century, with allover designs of blue and peach birds and dragons on a cream ground. 12' long, 9' wide. All rugs sold "as is".

**420 Caucasian Rug**

Caucasian rug with central boteh field on a beige ground, red floral primary border. 9'3" long, 3'9" wide. Condition: pile wear, side wear, areas of partially detached binding. All rugs sold "as is".

**421 Turkish Prayer Rug**

Turkish prayer rug with geometric designs in red, orange, and blue. 5' long, 3' 5" wide. All rugs sold "as is".

**LOT #****422 Bijar Rug**

Bijar rug, two central stepped medallions on a blue ground, red geometric floral vine border. 6'4" long, 3'9" wide. Condition: pile wear, loss. All rugs sold "as is".

**423 Heriz Runner**

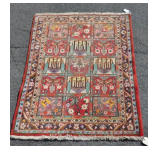
Heriz runner, circa 1890, three blue and salmon medallions on a navy ground, red floral primary border. 5'7" long, 2'7" wide. Condition: pile wear, loss, exposed, partially detached side threads. All rugs sold "as is".

**424 Bijar Rug**

Bijar rug, central navy medallion on a red ground, white geometric primary border. 4'11" long, 3'3" wide. Condition: pile wear. All rugs sold "as is".

**425 Persian Garden Rug**

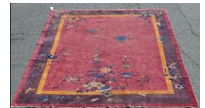
Persian garden rug, fifteen squares in six different designs, navy floral primary border. 5'3" long, 3'6" wide. All rugs sold "as is".

**426 Chinese Runner**

Chinese runner having various symbols on a cream ground. 9' 6" long, 2' 6 1/2" wide. Condition: a couple low spots. All rugs sold "as is".

**427 Chinese Art Deco Rug**

Chinese Art Deco rug, circa 1920, floral design on a plum ground, eggplant floral primary border. 10' 1" long, 8' wide. Condition: pile wear, end losses, small stains, a few small low spots. All rugs sold "as is".



October Fall Fine Estates Auction 10/5/2014**LOT #****428 Persian Area Rug**

Persian rug, 20th century, central navy stepped medallion on a red ground narrow white primary border. 60 1/2" long, 28 1/2" wide. All rugs sold "as is".

**Terms and Conditions of Sale**

Bidding on items indicates review of and acceptance of the following:

1. A Buyer's Premium will be added to the hammer price of each lot and is payable by the purchaser as part of the total purchase price. The Buyer's Premium per lot for in house purchases in our auction is 22% of the final bid up to and including \$500,000, and 17% for the remaining balance above \$500,000. Buyers who pay their invoices IN FULL IN CASH OR BY APPROVED CHECK within seven days of the auction will pay a reduced buyer's premium of 20%. The buyer's premium for all internet purchase is 25% with no discounts. The buyer's premium on all lots not paid for within ten (10) days after the auction increases by 3% over the original stated buyer's premium.
2. All goods are sold "AS-IS", "WHERE IS", "WITH ALL FAULTS" and all sales are final. YOUR ONLY GUARANTEE IS TO PREVIEW AND INSPECT THE ITEMS YOURSELF. Items are described briefly, and Woodbury Auction descriptions are for information purposes only and we are not responsible for any omissions or errors in descriptions. Formal "Condition Reports" are not included in online or printed catalogs. Condition information included in Woodbury Auction item descriptions are for information purposes only and may not be relied upon as the equivalent of a formal Condition Report, and while formal Condition Reports given in response to bidder request are issued in good faith, they shall not be construed as expert opinions or guarantees of condition and may not be relied upon in substitution of personal inspection. All auction items are available for bidder examination prior to the auction. Bidding on an item signifies that you have examined that item, either personally or through an authorized agent, or that you have elected not to examine that item, and in such case you will be bidding on the understanding that the item is NOT IN GOOD CONDITION OR IN THE CASE OF MECHANICAL EQUIPMENT IS NOT IN WORKING ORDER. Any additional condition information generated in response to bidder requests will be added to the online catalog lot description. Any request for additional photos will be responded to when possible and images will be added to the online catalog lot description. Photo requests submitted later than 24 hours before the sale will not be responded to, and we do not provide photos post-auction. It is the responsibility of prospective bidders to examine lots in

person or through an authorized agent and decide their level of interest. Neither the auctioneer, nor the consignor, is responsible for the accuracy of any printed or verbal descriptions or any Condition Reports. All weights and measurements are approximate and not guaranteed. Buyer relies solely on his/her own expertise and judgment when bidding. If you require absolute certainty in all areas of condition and/or authenticity, and the results of your own evaluation leave uncertainty in your mind, we recommend that you not bid on the item in question. As noted above, all sales are final at the fall of the hammer, and we do not give refunds. Woodbury Auction is not responsible for the correctness of descriptions or condition statements, and we do not represent or warrant the description, quality, size, importance, genuineness, authorship, attribution, provenance, period, culture, source, origin or condition of the items and no statement made in our catalog, at or during the auction, in the bill of sale, or otherwise or elsewhere shall be deemed such a representation or warranty.

The purchaser's sole remedy in the event of a dispute regarding any lot shall be rescission of the sale and restitution of the original purchase price and premium paid by such purchaser. Woodbury Auction shall have no liability for any damages, incidental, consequential or otherwise, arising out of or in connection with any sale to purchaser. Woodbury Auction will not refund any shipping and/or handling fees paid to a third party by the purchaser. Woodbury Auction pays its consignors 30 business days after the day of sale. Once consignors have been paid, Woodbury Auction will not honor any requests for refunds.

3. All bidders are required to register and give full identification including a valid drivers license and credit card information prior to the beginning of the auction as a condition of registration, and are required to use the number issued them when identifying themselves as the successful bidder. In some cases we reserve the right to require other auction house credit references.

4. The auctioneer has the sole and exclusive power and authority, without exception and without liability, to (a) resolve any disputes between bidders, (b) determine whether to pass or re-offer any lot for sale, (c) reject or challenge any bid or advance at the start of the bidding or during the bidding, and (d) otherwise regulate the bidding and its increments. The auctioneer shall further have the right to reject any opening or subsequent bid that, in the auctioneers' sole opinion and discretion, is not commensurate with the value of the lot or is not within the published bid increments. The auctioneer shall also have the right to refuse admittance to, or remove from, the auction any visitor or bidder whose conduct, or threatened conduct, before, during or after the auction is deemed by the auctioneer in his sole and exclusive discretion to be inconsistent with the interests of Woodbury Auction and/or its consignors, employees, agents or representatives. At the auctioneer's

October Fall Fine Estates Auction 10/5/2014

discretion, no bid of less than one-half the low estimate will be accepted from any source: phone bidding, absentee bidding, internet bidding, or live bidding in the gallery. The highest bidder as determined by the auctioneer shall be deemed the purchaser. If the auctioneer receives more than one bid of the same value, only the first acknowledged will be accepted. If any dispute arises after the sale, the sale record maintained by Woodbury Auction is conclusive. Although Woodbury Auction will endeavor to execute accurately any absentee/phone bids, these services are offered only as a convenience to clients who are not physically present at the auction, and we are not responsible for any errors or omissions which may occur in the exercise of these services.

"Auctioneer" as used in these Conditions of Sale means an employee or representative of Woodbury Auction duly licensed as an auctioneer or otherwise authorized by Woodbury Auction to conduct an auction under the laws of the State of Connecticut.

5. Woodbury Auction offers the internet bidding platform tool as a convenience to our clients. Please be aware that in some cases an absentee bid submitted on the internet before or during the auction may not be received by the auctioneer conducting the sale, or if received may not be accepted. This may occur even when the internet absentee bid was placed earlier than an equivalent absentee bid. No bids may be submitted after the auctioneer has closed the lot. The auctioneer has final discretion over which bids to accept, as described elsewhere in this document, and live bidders in the room are recognized first by the auctioneer.

6. Title to each auction lot passes upon the fall of the auctioneer's hammer, and the purchaser assumes full ownership of and responsibility therefore at the fall of the auctioneer's hammer. Thereafter the property is at the sole risk of the Buyer and neither the Seller nor Woodbury Auction shall be responsible for any loss or damage.

7. Some lots carry reserves or minimum selling prices, which is a figure set by the consignor and Woodbury Auction below which a lot will not be sold. Woodbury Auction will execute the reserve bids on behalf of consignors. The reserve will not exceed the low estimate. Estimates are subject to change at any time prior to the offering of each lot.

8. As noted above in Section 4, absentee and telephone bids are accepted and will be executed when possible, although solely as a convenience to customers. Phone bids must open at the greater of \$200 or one half the low estimate. Absentee bids are executed in the order received, therefore in the case of identical absentee bids on a lot, the first bid received will be recognized. Woodbury Auction will not be held responsible for any errors or omissions, or failure to execute bids accurately. Bidders are encouraged to submit absentee and telephone bid requests 24

hours prior to the auction, and Woodbury Auction reserves the right to decline acceptance of absentee and/or phone bid requests tendered after 5pm on the day prior to the sale. Purchases will not be available to absentee buyers for pick-up during the auction unless arrangements are made prior to the sale.

9. Items may be withdrawn at any time prior to being offered.

10. Payments accepted are cash, approved checks, money orders, cashier's checks and wire transfers. We do not accept debit cards, American Express or Paypal. Credit card payments are accepted only when the purchaser is present in the gallery and the card is swiped. Split payments (more than one form of payment on a single invoice) are not accepted. Valid credit card information may be required to register to bid, and a deposit may be taken toward any balance due resulting from successful bids. First time buyers must establish bank credit before the auction in order to have "approved check" status. References from other auctioneers may also be required or may satisfy the credit reference requirement. Purchases paid for with non-approved personal/business checks or international bank checks/money orders may not be released until ten days from receipt of payment or until payment clears. Wire transfers are accepted with a \$25.00 additional wire transfer fee added to the invoice price.

PLEASE NOTE THAT WOODBURY AUCTION TERMS AND CONDITIONS TAKE PRECEDENCE OVER ANY TERMS AND CONDITIONS SPECIFIED BY CREDIT/DEBIT CARD ISSUERS IN CONNECTION WITH PURCHASES BY CREDIT/DEBIT CARD. BY BIDDING AT OUR AUCTION YOU SPECIFICALLY ACKNOWLEDGE AWARENESS OF AND AGREEMENT WITH THIS PROVISION OF OUR TERMS AND CONDITIONS.

Payment is due seven (7) days after the sale. If a buyer fails to make payment within ten (10) days after the sale, the buyer's premium increases to 25% and the account will be delinquent. Any buyer credit card on record will be charged the invoice total plus the additional 3% late fee (22% plus 3%). If no credit card is available, or if a credit card number supplied is invalid or a credit card charge is rejected, Woodbury Auction LLC shall be entitled to do any or all of the following, in its sole discretion:

a. After 10 Days - Void any single purchase, group of purchases, or all purchases invoiced and sell the item(s) to an underbidder or any other bona fide buyer, or return the item to the consignor, without liability to the delinquent buyer and without releasing said buyer from responsibility to pay for any remaining purchases or losses/damages incurred due to nonpayment.

b. After 30 Days - File a Civil Complaint against the buyer to recover any balance due plus court fees, interest, storage fees,

October Fall Fine Estates Auction 10/5/2014

administrative costs, and any other applicable financial hardship caused to Woodbury Auction LLC and/or the consignor or pursue other collection avenues to recover any and all losses.

c. After 30 Days - Re-offer any remaining invoiced items for sale, either publicly or privately, and collect any remaining balance owed after such sale from the delinquent buyer, including, but not limited to, the total balance remaining, court fees, interest, storage fees, administrative costs (including those related to re-selling the item(s) and any other related fees).

d. Charge interest at a rate of 1% per month throughout the entire period of non-payment.

e. Reject further bidding or consignments by the buyer at any and all future auctions.

11. All purchases are subject to 6.35% Connecticut state sales tax unless the purchaser possesses a Connecticut sales tax exemption number, and provides Woodbury Auction with a valid, fully completed resale certificate. Valid exemption numbers from other states are accepted if accompanied by a fully completed resale certificate and a business card or letterhead.

12. ALL BUYERS ARE ENTIRELY RESPONSIBLE FOR ARRANGING AND PAYING FOR ALL PACKING AND SHIPPING OF PURCHASED ITEMS. PLEASE DO NOT CONTACT WOODBURY AUCTION FOR PACKING OR SHIPPING QUOTES OR ASSISTANCE, AS WE DO NOT MAINTAIN AN IN-HOUSE SHIPPING DEPARTMENT - ALL SHIPPING IS OUTSOURCED. Please consider any and all shipping costs before you place an absentee bid or bid live. The value of any item may have no bearing on the cost to ship it and shipping costs will not affect your contractual obligations undertaken by registering to bid. While we do not maintain an in-house pack/ship department, as a courtesy and convenience to our customers we have listed below several shippers you may contact to provide shipping estimates, arrange pickup of your items from Woodbury Auction, and arrange for shipping to your location. A release statement with the name and contact information of your shipper must be emailed or enclosed with your payment to Woodbury Auction before any merchandise can be released.

Business and Shipping Center of Southbury
203-264-2240
www.businessandshipping.com
smaller items

Packaging Depot
860-482-2539
pkgdepot@optonline.net
smaller items

Scott Cousins
978-491-9353
scottcousins22@aol.com
furniture and decorations

Beardsley's Antiques
203-270-0471
(NY and Boston - night and weekend delivery only)

Highland Moving
828-230-2922

Mizzentop
717-786-8809

Plycon Van Lines
631-269-7000
(Long distance) (Large items)

Sure Express Worldwide
1-877-877-0889
sureexpress@maine.rr.com, www.SureExpressworldwide.com

Top Quality Delivery Services
860-379-3424
(CT, NY, MA) (Large items)

Transport Moving and Storage
800-495-1114

13. For buyers attending the live auction, all merchandise purchased must be paid for and removed from the premises the day of the auction. For other buyers, all merchandise purchased must be paid for and removed from the premises within seven (7) days after the auction. Storage charges will accrue at a rate of \$10 per day per lot beginning fifteen (15) days after the sale.

14. Woodbury Auction adheres to all Federal laws applicable to the sale of items containing materials from endangered or protected animal species, and WILL NOT ACCEPT LIABILITY for the purchase of any item which may include any material including, but not limited to, ivory, rhinoceros horn, tortoise shell, coral, whalebone or endangered woods. In the event an item is found to contain any of these protected products, it is THE SOLE RESPONSIBILITY OF THE BUYER to have conducted their own due diligence and to acknowledge and adhere to the applicable terms and conditions of any laws and regulations which apply to purchasing or the importation or exportation of such materials or items.

15. In all instances Woodbury Auction's or the auctioneer's joint or several interpretation of these conditions is final and binding on all bidders, and by placing a bid all bidders acknowledge having read and agreed to these Terms and Conditions.

