

Woodbury Auction LLC
710 Main Street South (Auction Gallery & Pick up)
PO Box 957 (Mail & Payments)
Woodbury, CT 06798
Phone: 203-266-0323 Fax: 203-266-0707

October Fine Estates Auction 10/4/2015

LOT #

1 Inv#: 1801109 Roycroft Hand Hammered Copper Urn/Lamp Base

Roycroft hand hammered copper urn/lamp base. 19 1/4" high, 8" diameter. Condition: drilled through base side. 600.00 - 800.00



2 Inv#: 1801021 Three Chinese Glazed Pottery Figural Roof Tiles

Three Chinese glazed pottery figural roof tiles. 10 1/4" high, 5 1/2" wide to 12 1/2" high, 9" wide. Condition: chips, cracks, losses, discoloration. 200.00 - 300.00



3 Inv#: 1592074 Two Cartier 18K Gold Bamboo Bangles & Enamel Ring

Two Cartier 18K gold bamboo bangles and a Tiffany & Co. 18K gold and enamel ring. 1/8" wide, 5/8" interior width (approximate size 6 - 6.5) to 1/8" wide, 2 1/2" inner diameter. Condition: enamel loss, light scratches. Gross weight: 19.1 dwt. 1,200.00 - 1,500.00



4 Inv#: 1726029 China Trade American Ship Portrait O/C

China Trade American ship portrait circa 1870, oil on canvas, unsigned. Sight size: 17" high, 23" wide. Frame size: 22 1/4" high, 28" wide. Condition: a few small losses, crazing, restoration, several areas of paint lifting. 1,000.00 - 1,200.00



5 Inv#: 1726039 Chinese Export Famille Rose Porcelain Charger

Chinese export Famille Rose porcelain charger, late 18th century, with pink fish scale border, lotus blossom center containing flowers within. Provenance: "The Hill Farm" Pawling, NY; Dr. & Mrs. Norman Vincent Peale, including items from previous resident Josephine Holt, Perfect Bay, first woman to head a New York Stock Exchange member firm. 12 13/16" diameter.



LOT #

Condition: hairline crack to edge, enamel wear, loss. 600.00 - 800.00

6 Inv#: 1801014 French Empire Mantle Clock
 French Empire mantle clock, 19th century, with pendulum and key. 16 1/4" high, 8" wide. Condition: oxidation, gilt wear, loss. 300.00 - 400.00



7 Inv#: 1785024 Miguel Berrocal "Portrait de Michele"

Miguel Berrocal (Spanish, 1933-2006), "Portrait de Michele" 1969, nickel, silver and brass 17 element puzzle sculpture. The enameled eye is the setting for a 14K mesh finger ring contained within the sculpture. Edition of 9500. Approximately 2 3/4" high, 2 3/4" wide. Condition: handling wear, one small peg broken from one element, but present. 300.00 - 400.00



8 Inv#: 1794013 French Glazed Terracotta Cockerel Roof Ornament

French Provincial glazed terracotta pottery rooster (cockerel form) roof tile ornament, stamped "Tuilerie Normande, Barent", 29 1/2" high, 8 1/2" wide. Condition: crazing, chips. 1,200.00 - 1,500.00



9 Inv#: 1592072 Victorian Gold Thimble, Monogrammed

A Victorian gold thimble, monogrammed, stamped "7". 7/8" high, 5/8" diameter. Weight: 2.9 dwt. Condition: slight wear. 150.00 - 200.00



October Fine Estates Auction 10/4/2015

LOT

10 Inv#: 1807002 Zsolnay Hungarian Porcelain Dragon Ewer

Zsolnay Hungarian porcelain dragon ewer impressed "pecs Zsolnay 1 787". 8 1/2" high, 6" wide. Condition: gilt wear to rim. 200.00 - 300.00

**11 Inv#: 1801166 Chinese Carved Hardstone Container**

Chinese carved hardstone container. 5" high, 3 1/2" wide. Condition: chips. 100.00 - 200.00

**12 Inv#: 1769321 Group Ten Early Continental Porcelain Items**

Group of ten early Continental porcelain items, comprising a covered cup, two Meissen cups and saucers, one with cover, a Derby covered sauce boat with ladle, an unmarked covered cup, a small Dresden saucer, a Meissen two handled covered cup, and a small figurine. 1 1/2" high to 5" high. Condition: some checking and wear. Provenance: collection of David L. Bronson. 300.00 - 500.00

**13 Inv#: 1766025 Assyrian Hardstone Cylinder Seal**

Assyrian hardstone cylinder seal depicting a ruler and attendants. 1 3/4" long, 3/4" diameter. Condition: edge chips. 200.00 - 400.00

**14 Inv#: 1050396 Andre Dunoyer de Segonzac "Young Girl In Chair"**

Andre Dunoyer de Segonzac (French, 1884-1974), "Young Girl In Chair" ink on paper, signed lower center "A. Dunoyer de Segonzac". Framed, not examined out of frame. Sight size: 11" high, 9" wide. Frame size: 19" high, 17" wide. Condition: abrasions to paper lower right corner, a few small spots in border. 200.00 - 300.00



LOT

15 Inv#: 1792001 Early Needlework Sampler On Linen, 1732

Early needlework sampler on linen with floral decoration dated 1732. Framed, not examined out of frame. Sight size: 14 1/4" high, 7 1/2" wide. Frame size: 16 3/8" high, 9" wide. Condition: fading, toning, stains, hole upper right corner. 300.00 - 400.00

**16 Inv#: 1785044 Mary Baurmeister "Col-our" Mixed Media Sculpture**

Mary Hilde Ruth Baurmeister (German, b. 1934), "Col-our" mixed media lens sculpture titled, dated, signed verso "28 February 1969". 8 3/4" high, 8 5/8" wide. 2,000.00 - 2,500.00

**17 Inv#: 1735002 Rolex, Tissot Men's Watches**

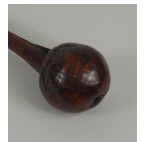
Three men's watches comprising a Rolex Oyster Perpetual Stainless Steel, a faux Rolex, and a Tissot stainless steel watch. 1 3/8" wide, 8 1/2" long to 1 1/2" wide, 6 3/4" long. Condition: use wear, scratches, Rolex Oyster in running condition. 700.00 - 800.00

**18 Inv#: 1766021 Attr. To Grueby Pottery Squat Bulbous Vase**

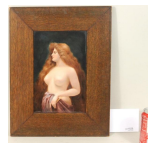
Attributed to Grueby, pottery squat bulbous vase in mottled blue. 3 1/4" high, 6" diameter. Condition: loss to base, cracks. 300.00 - 500.00

**19 Inv#: 1569053 Fiji Carved Wood Tonga Throwing Club**

Fiji carved wood Tonga throwing club. Remains of old collection label on handle. 16" long, 3 1/2" wide. 500.00 - 700.00

**20 Inv#: 1758106 Hand Painted Porcelain Plaque**

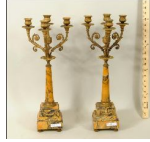
Hand painted porcelain plaque depicting a semi-clad woman, signed, dated in pencil verso "J. Ehlers 1903". Plaque size: 10 1/4" high, 7" wide. Frame size: 16 1/4" high, 13" wide. 500.00 - 700.00



October Fine Estates Auction 10/4/2015

LOT #**21 Inv#: 1422042 Pair Bronze & Marble Candelabra**

Pair of gilt bronze and marble four light candelabra. 19 1/4" high, 8" wide. Condition: marble with chips, loss to one column base, bases with edge chips. 200.00 - 400.00

**22 Inv#: 1592073 P. Picasso For Tiffany & Co 18K Gold/Diamond Cross**

A Paloma Picasso for Tiffany & Co 18K white gold and diamond cross necklace. Cross 9/16" high, 7/16" wide. Gross weight: 2.6 DWT. 400.00 - 500.00

**23 Inv#: 1769228 Small Ivory/Gold Memento Mori Patchbox**

Small Ivory/Gold memento mori patchbox, interior mirrored, with steel pick, 18th c. approximately 3" long. 200.00 - 300.00

**24 Inv#: 1753019 Group Vintage Advertising Pocket Knives**

Group of twenty-three vintage advertising pocket knives including Purina, Wiesbaden Theater, Atlantic City and others. 2 3/4" long, 5/8" wide to 5 1/2" long, 5/8" wide. Condition: use wear, stains, rust. 300.00 - 400.00

**25 Inv#: 1784001 German Westminster Chiming Longcase Clock**

German Wurttemberg Westminster chiming longcase grandfather clock, with mahogany case and arched top, with four tube chiming movement, marked on back of movement "Germany No. 4 161019", with brass plaque on front "Wilber S. Peck, October 12th, 1911." 94" high, 20 1/2" wide, 13" deep. 2,000.00 - 2,500.00

**LOT #****26 Inv#: 1050495 Chinese Carved Hardstone Pendant**

Chinese carved hardstone pendant depicting a boat with figures. 2 1/4" high, 1 7/8" wide. Condition: roughness to rower's head and top of oar, possibly inherent to stone. 300.00 - 400.00

**27 Inv#: 1801150 Pair Empire Gilt Bronze Candlesticks**

Pair Empire gilt bronze candlesticks. 13 1/2" high, 6 1/2" wide. Condition: gilt wear, loss, one stem needs tightening. 200.00 - 300.00

**28 Inv#: 1793001 Ken Carder Glass Sculpture "Leaping Trout"**

Ken Carder (American, b. 1955), "Leaping Trout" glass sculpture, signed, dated on base "K W Carder '87". 6 1/4" high, 8 3/4" long. Condition: a few small base chips. 800.00 - 1,000.00

**29 Inv#: 1786001 Jacobi & Jenkins Silver Repousse Rectangular Dish**

Jacobi & Jenkins (Baltimore c. 1900) silver repousse rectangular dish 12" long, 9" wide, 2" deep. Weight: 18 OZT. 400.00 - 500.00

**30 Inv#: 1736110 Bohemian Ottoman Style Blue Glass Decanter**

Bohemian Ottoman style blue glass decanter with enamel, gilt and applied "jewel" decoration. 24" high, 6 1/4" wide. Condition: small chips to edge of stopper bottle rim, gilt wear, loss, later decorative alteration to stopper rim probably to mask damage. 400.00 - 600.00

**31 Inv#: 1801154 Chinese Carved and Polychromed Quan Yin Figure**

Chinese carved and polychromed Quan Yin figure. 49 1/2" high, 18" wide. Condition: chips, cracks, losses, separations. 900.00 - 1,200.00



October Fine Estates Auction 10/4/2015

LOT

- 32 Inv#: 1583015 Arnold Newman, Photograph**
Arnold Newman (American, 1918-2006), photograph, stamped, numbered in pencil verso "499 V3.003", 7 1/2" high, 9 3/4" wide. 400.00 - 500.00



- 33 Inv#: 1801070 Renaissance Carved/Gilded Architectural Fragment**

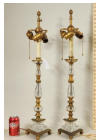
Possibly Renaissance period carved and gilded architectural fragment. 9 1/2" high, 15 1/2" wide. Condition: cracks, losses, wear. 200.00 - 300.00



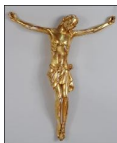
- 34 Inv#: 1801140 Japanese Scroll Boxed "Pigeon on Branch"**
Japanese scroll, boxed, "Pigeon on Branch" watercolor on silk, signed, red seal lower left. Sheet size: 48 1/2" high, 16 1/2" wide. Scroll size: 83" high, 21" wide. Condition: tears at top, light stains, soiling. 200.00 - 300.00



- 35 Inv#: 1785035 Pair Crystal Gilt Bronze Candlesticks**
Pair of crystal gilt bronze candlesticks on triangular bases, now mounted as lamps. 29 1/2" high, 6 1/2" wide. Condition: a few small chips. 300.00 - 400.00



- 36 Inv#: 1801056 Carved & Gilded Corpus Figure**
Carved and gilded corpus figure. 19" high, 15 1/2" wide. Condition: gilt, gesso chips, losses, left arm repaired. 200.00 - 300.00



- 37 Inv#: 1050398 Rene Auberjonois "Seated Nude" Charcoal Drawing**

Rene Auberjonois (Swiss, 1872-1957), "Seated Nude" charcoal on paper, initialed lower right. Framed, not examined out of frame. Sight size: 12 1/8" high, 9 1/8" wide. Frame size: 18" high, 15" wide. Condition: light stain in chair back. 200.00 - 300.00

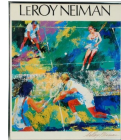


LOT

- 38 Inv#: 1807001 Cuban Panoramic Photo**
Cuban panoramic photograph, circa 1900, of possibly American diplomat's estate, by American Photo Co. Havana Cuba. Framed, not examined out of frame. Sight size: 8 3/4" high, 70 3/4" wide. Frame size: 12" high, 73 1/2" wide. Condition: faint vertical central crease, light stains, small loss upper left edge, a few small creases. 200.00 - 300.00



- 39 Inv#: 1384039 Leroy Neiman Tennis Poster, Signed**
Leroy Neiman (American, 1921-2012), tennis poster, signed lower right "Leroy Neiman". Framed, not examined out of frame. Sight size: 23 1/2" high, 19 1/2" wide. Frame size: 24 1/4" high, 20" wide. Condition: one small spot lower left edge. 200.00 - 300.00



- 40 Inv#: 1050397 Attributed Alphonse Legros "Woman Adjusting Shoe"**

Attributed to Alphonse Legros (French, 1837-1911), possibly Louis Legrand (French, 1863-1951), "Woman Adjusting Shoe" charcoal on paper, unsigned. Framed, not examined out of frame. Sight size: 9 3/4" high, 7 1/8" wide. Frame size: 16" high, 13" wide. 200.00 - 300.00



- 41 Inv#: 1782021 Julie Thayer "Rainy Landscape" Photogravure**
Julie Thayer, (20th century) "Rainy landscape" photogravure, signed, dated "1977" in pencil lower right. Sight size: 15" high, 11 1/2" wide. Frame size: 21" high, 17" wide. Condition: lacking glass, scratches, surface loss to foliage middle left. 80.00 - 100.00



- 42 Inv#: 1592064 R. Peter, Navajo Silver/Turquoise Concho Belt**
R. Peter, Navajo silver and turquoise ladies concho belt stamped "R. Peter Navajo". Each concho 1 1/8" high, 1 5/8" wide, length: 36 3/4" long. Gross weight: 3.870 OZT. 100.00 - 200.00



October Fine Estates Auction 10/4/2015

LOT #**43 Inv#: 1592065 Mexican Sterling Silver Necklace & Bracelet**

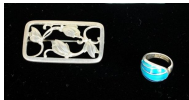
Mexican sterling silver necklace and bracelet, both marked "ARY Sterling", necklace "TF 19", bracelet with "bell 3" mark together with an unmarked silver ribbed necklace and bracelet 3/16" wide, 2 1/2" inner diameter to 1 3/8" wide, 5 1/2" high. Sterling weight: 2.415 OZT. Condition: bends. 100.00 - 150.00

**44 Inv#: 1592066 Silver Cactus Form Four Strand Necklace**

Silver cactus form four strand necklace, unmarked, each strand 1/2" wide, 17 1/4" long. Condition: small dings. Weight: 8.315 OZT. 150.00 - 200.00

**45 Inv#: 1592067 Georg Jensen Sterling Silver Pin, D. Anderson Ring**

A Georg Jensen sterling silver pin marked Denmark 295 and a David Anderson adjustable enamel ring. 5/8" high, 3/4" wide to 1 1/4" high, 2 1/8" wide. Gross weight: .775 OZT. 100.00 - 200.00

**46 Inv#: 1785016 Seven Gorham Sterling Demitasse, Two Salt Spoons**

Seven Gorham sterling demitasse, two salt spoons, Weight 4.115 OZT. 75.00 - 100.00

**47 Inv#: 1804001 Three Sterling Silver Items**

Three sterling silver items including a Fisher pitcher. 2 3/4" high, 2 3/4" wide to 8 1/2" high, 8 1/2" wide. Weight: 20.70 OZT. Condition: dents. 100.00 - 150.00

**48 Inv#: 1592068 Gorham Sterling Silver Serving Knife**

A Gorham sterling silver serving knife 12" long, 2 1/2" wide. Condition: light scratches. Weight: 4 OZT. 100.00 - 200.00

**LOT #****49 Inv#: 1592069 Mexican 950 Silver & Malachite Necklace**

A Mexican 950 silver and malachite necklace marked TM 153 and a sterling stone pendant marked DK. 2 5/8" high, 2 1/8" wide to 1 1/4" wide, 6 3/4" long. Condition: scratches to pendant back. Gross weight: 3.1 OZT. 100.00 - 150.00

**50 Inv#: 1592070 Mexican 970 Silver Hinged Bracelet**

Mexican 970 silver hinged bracelet, stamped 970, clasp indistinctly marked. 15/16" wide, 2 7/8" wide interior measurement. Condition: repair to clasp tongue, a few tiny edge dings. Weight: 4.495 OZT. 200.00 - 300.00

**51 Inv#: 1592071 Japanese Silver & Mixed Metal Necklace & Bracelet**

A Japanese silver and mixed metal necklace and bracelet marked silver and Mt. Fuji mark. 9/16" wide, 7 1/2" long to 5/8" wide, 17 1/2" long. Gross weight: 1.006 OZT. 100.00 - 200.00

**52 Inv#: 1769325 Group Miscellaneous Ethnic Curiosities**

Group of miscellaneous ethnic curiosities including an Ushabiti figure, turquoise pin, pottery fragments, 14K gold necklace, a locket and other items. 1" high, 1/2" wide to 3 1/4" high, 1 1/2" wide. Condition: chips, cracks, losses, breaks. 100.00 - 200.00

**53 Inv#: 1801210 Chinese Brass Lock Form Necklace**

Chinese brass lock form necklace, framed. Sight size: 13 1/2" high, 5 1/2" wide. Frame size: 20" high, 12" wide. 80.00 - 100.00



October Fine Estates Auction 10/4/2015

LOT #**54 Inv#: 1050467 Four Decorative Items/Limoges Egg**

Four small decorative items comprising a Limoges egg container containing two scent bottles, a Halcyon Days enamel box, a cut glass ashtray and wood bird. 2" high, 1 3/4" wide to 7" diameter. 80.00 - 100.00

**55 Inv#: 1592075 Two Tiffany & Co Sterling Silver Bracelets**

Two Tiffany & Co sterling silver bracelets including an 18K and sterling rope bracelet. 3/8" wide, 7 1/8" long to 3/8" wide, 7 1/2" long. Weight: .840 OZT. 100.00 - 200.00

**56 Inv#: 1801036 Five Piece Waterbury S/P Tea Set, Plus One**

Five piece "Rogers & Bro" Waterbury CT Extra Plate tea set, together with a silver plated pitcher. Largest 11" high. 80.00 - 100.00

**57 Inv#: 1072410 Old Sheffield Reticulated Oval Inkstand**

Old Sheffield reticulated oval inkstand with wire grillwork and two glass inkwells. 6" long, 3" wide. 80.00 - 100.00

**58 Inv#: 1769324 Group Four Small Boxes, Sterling/Brass**

Group of four small boxes, comprising two round sterling silver boxes, smaller one with tortoise top, the other larger with London silver marks for 1799 and "TH", and two brass boxes, one round and one oval, both with agate tops. 3/4" high to 1 1/4" high, 1 1/4" wide to 2 1/4" wide. 100.00 - 200.00

**59 Inv#: 1804002 Mexican Sterling Silver Oval Serving Tray**

Mexican sterling silver tray by Juventino Lopez Reyes. 3 1/2" high, 12 1/4" wide. Weight: 12.4 OZT. 300.00 - 400.00

**LOT #****60 Inv#: 1592076 Five Sterling Silver Items**

Five sterling silver items comprising a Napier necklace, a bracelet with candelabra mark, two pins and a photo locket. 7/8" high, 1" wide to 9/16" wide, 14 1/2" long. Condition: light scratches. Weight: 3.840 OZT. 100.00 - 200.00

**61 Inv#: 1736122 Brass and Glass Hanging Lantern**

Brass and glass hanging lantern. Approximately 24" high, 13" wide. Condition: finish wear, loss. 300.00 - 400.00

**62 Inv#: 1050486 North African Leather Covered Basket**

North African leather covered basket. 7" high, 11 1/2" wide. Condition: soiling, base wear. 80.00 - 100.00

**63 Inv#: 1801122 Sailor's Shell Mounted Box**

Sailor's shell mounted box. 3 1/2" high, 8 1/4" wide. Condition: a couple small losses. 100.00 - 200.00

**64 Inv#: 1801007 Large Gilt Metal Bear Sculpture**

Large gilt metal/spelter bear sculpture, unsigned. 13" high, 16" long. 300.00 - 400.00

**65 Inv#: 1050404 Judaica Hand Colored & Gilt Print**

Judaica hand colored and gilt print "Sacrifice Of Isaac". Possible pencil signature on verso. Framed, not examined out of frame. Sheet size: 7 5/8" high, 8 3/4" wide. Frame size: 15" high, 16" wide. Condition: toning, edge tears, creases, tape stains at corners verso, crack to glass verso. 50.00 - 100.00



October Fine Estates Auction 10/4/2015

LOT #**66 Inv#: 1801126 Modernist Ceramic Bust Signed "Meister"**

Modernist ceramic bust signed "Meister" verso.
6 1/2" high, 3 1/2" wide. Frame 14" high, 11 1/4" wide. 100.00 - 200.00

**67 Inv#: 1800025 Group Five Folk Art Carved & Painted Fish Decoys**

Five American folk art carved and painted wood and metal fish decoys 3" high, 5 1/2" long to 2 1/2" high, 10" long. Condition: rust, bends to metal, largest with chip to tail. 200.00 - 300.00

**68 Inv#: 1753017 Group of Eight Vintage Carved Fishing Lures**

Group of eight vintage carved wood and metal fishing lures. 4 5/8" long, 2" wide to 8 1/2" long, 2" wide. Condition: paint wear, loss, age cracks, bends. 200.00 - 300.00

**69 Inv#: 1726033 Five Etched & Cut Glass Items 18th/19th C**

Five 18th/19th century etched and cut glass items including two mold-blown decanters. 11" high, 5 1/2" wide to 13" high, 5 1/4" wide. Condition: claret jug with fracture, small hole, two decanters with rim loss, one lacking stopper. 200.00 - 300.00

**70 Inv#: 1726035 After J.J. Audubon "Black Skimmer Or Shearwater"**

After John James Audubon (American, 1785-1851) "Black Skimmer or Shearwater No. 65", hand colored etching/aquatint, Peabody Museum 1974 restrike from the original Robert Havell plate owned by Yale University. Sight size: 22" high, 21 1/4" wide. Frame size: 33" high, 31 1/4" wide. 400.00 - 500.00

**LOT #****71 Inv#: 1787004 Group Continental & English Porcelain/Pottery**

Group of eight Continental and English porcelain and pottery items, comprising a pair of signed Delft garniture vases, with label "collection of Etienne Delaunoy, Amsterdam Hollande", a pair of Samson armorial style plates, an English creamware mug and three pitchers. 4 3/4" high by 5 1/2" wide to 9" high by 5 1/2" wide. Condition: enamel wear, chips, cracks and restorations. 300.00 - 400.00

**72 Inv#: 1050448 Possibly Steuben Venetian Amber Vase**

Possibly Carder Steuben Venetian amber threaded bubble glass vase with ruffled rim, unsigned. 8 5/8" high, 6 1/2" wide. Condition: one ground down area on rim. 100.00 - 200.00

**73 Inv#: 1801041 Elaborate Brass Double Light Student Lamp**

Elaborate brass double light student lamp 25" high, 16" wide. Condition: edge dent to center of urn. 400.00 - 500.00

**74 Inv#: 1050450 Possibly Carder Steuben Venetian Vase**

Possibly Carder Steuben Venetian rose threaded bubble glass vase in Flemish blue, unsigned. 8 1/2" high, 6 1/2" wide. Condition: base scratches. 100.00 - 200.00

**75 Inv#: 1785025 Miguel Berrocal "Micro Davidoff" Puzzle Sculpture**

Miguel Berrocal (Spanish, 1933-2006), "Micro Davidoff" gold plated puzzle sculpture with blue stone finial, interior containing a mesh band genitalia ring, in original pouch and box with catalog and certificate #15454. Approximately 2 1/4" high, 3/4" wide. Condition: handling, plate wear, loss. 300.00 - 400.00



October Fine Estates Auction 10/4/2015

LOT #**76 Inv#: 1753020 Two Groups Spear Points, Tools, Beads**

Group of spear points, tools, and beads displayed in two Riker cases. 1/4" high, 1/4" wide to 3 1/2" high, 2 1/4" wide. 100.00 - 200.00

**77 Inv#: 1800052 Group Six Early Brass Lighting Items**

Group of six early brass lighting items comprising two miniature lanterns and two pair candlesticks 3 3/4" high, 2 1/4" wide to 7 1/2" high, 3 1/4" wide. Condition: oval lantern with losses to mica inserts, dents. 200.00 - 300.00

**78 Inv#: 1753021 Two Groups CT Arrowheads**

Group of Connecticut arrowheads displayed in two Riker cases. 3/4" high, 1/2" wide to 1 3/4" high, 1" wide. 100.00 - 200.00

**79 Inv#: 1791006 African Carved Wood Figural Sculpture/Stand**

African carved wood figure on lucite stand. 65 1/4" high, 6" wide. Condition: age cracks. 300.00 - 400.00

**80 Inv#: 1807005 Mah Jongg Set**

Mah Jongg set in inlaid case. 6 1/2" high, 9 1/2" wide. Condition: three trays contain thirty-six tiles, one tray contains thirty-two tiles. Lower tray with eight blanks, forty-three red counters, seventy-six black counters, three die, two round game pieces. 200.00 - 300.00

**81 Inv#: 1736124 Copper, Brass & Metal Freestanding Lantern**

Large copper, brass and metal freestanding post lantern with acorn finial, scrollwork base. 34 1/2" high, 17" wide. Provenance: From a circa 1902 Bedford, NY mansion owned by Florence J. Harriman, socialite, suffragist and diplomat. Condition: wear from exposure to elements. 200.00 - 300.00

**LOT #****82 Inv#: 1785027 Modern School "Apple" Four Part Metal Sculpture**

Modern School "Apple" four part metal sculpture, unsigned, on marble base. 9 1/2" high, 4" wide. Condition: plate, finish wear, soiling to marble. 500.00 - 600.00

**83 Inv#: 1753022 Four Groups of Arrowheads**

Group of arrowheads displayed in four Riker cases. 1" high, 1/2" wide to 2 1/2" high, 1 1/8" wide. 200.00 - 300.00

**84 Inv#: 1795001 Danny Martinez Concho Belt**

Danny Martinez Native American sterling silver and turquoise concho belt, buckle stamped "DM Sterling". Buckle 2 1/2" high, 3" long. Concho 2 3/8" high, 3" long. Total length: 41". Gross weight: 14.195 OZT. 500.00 - 700.00

**85 Inv#: 1072427 Brass/Bronze Bulbous Form Fluid Lamp**

Possibly French brass/bronze bulbous form fluid lamp with applied embossed detail and footed base. 22" high. 200.00 - 250.00

**86 Inv#: 1800017 Four Small Glass & Enamel Items**

Four small glass and enamel items comprising three scent bottles, single and a pair, and an inkwell. 2" high, 2" wide to 3 3/4" high, 1 1/2" wide. Condition: blue scent bottle with detached cap, lacking stopper; chips, fracture. 100.00 - 200.00

**87 Inv#: 1785018 Italian 14K Gold 'Uno A Erre' Link Bracelet**

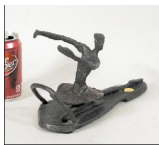
Italian 14K gold 'Uno A Erre' link bracelet. 8 1/4" long, 1 1/8" wide. Weight: 46.50 dwt. 1,000.00 - 1,200.00



October Fine Estates Auction 10/4/2015

LOT #**88 Inv#: 1384024 Continental School "Ballerina" Bronze Sculpture**

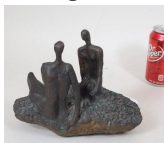
Continental School, 20th century, "Ballerina" patinated bronze sculpture, unsigned. 7" high, 11" long. 200.00 - 300.00

**89 Inv#: 1785020 Tiffany & Co. Gold Ruby & Aquamarine Cat Pin**

Tiffany & company gold, ruby and aquamarine cat pin. 2 1/2" high, 1 1/2" wide. Gross weight 11.50 dwt 500.00 - 700.00

**90 Inv#: 1785031 Magda Berger Bronze Sculpture "Figures"**

Magda Berger, 20th century "Figures" bronze sculpture, signed on base. 7 3/8" high, 9" wide 300.00 - 400.00

**91 Inv#: 1422013 Manner of Calder, Silver Spiral Bracelet Charm**

In the manner of Alexander S. Calder (American, 1898-1976), small silver wire triangular and spiral form jewelry or bracelet charm. 1" high, 5/8" wide. Tests sterling, .01 OZT. Provenance: descended to the consignors from a grandmother who is believed to have received this charm from the artist during the time of a friendship in the 1950's, at the same time when she received a sterling silver bracelet by Alexander S. Calder which was sold at Sothebys NYC in 2012 for \$185,000, including the buyers premium. This charm was recently submitted for registration to the Calder Foundation in New York on behalf of the consignors but was not registered. 400.00 - 600.00

**92 Inv#: 1801015 Pair Framed Spanish Colonial Silver Plaques**

Pair Spanish Colonial silver plaques, framed. Plaque size: 3" high, 3" wide. Frame size: 7 3/4" high, 7" wide. Condition: dent to Christos plaque. 300.00 - 400.00

**LOT #****93 Inv#: 1785019 18K Gold Ruby, Sapphire & Turquoise Scarecrow Pin**

18K gold ruby, sapphire & turquoise scarecrow pin. 2 1/2" high, 1 1/4" wide. Gross weight 11 dwt. 300.00 - 400.00

**94 Inv#: 1794014 English 14 Piece Stoneware Dessert Set**

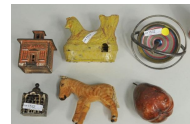
English 14 piece stoneware dessert set, stamped verso "Pearl", 9" diameter to 7 3/4" high, 12 1/2" wide. Condition: enamel wear, loss, chips, scratches, hairline crack. 300.00 - 400.00

**95 Inv#: 1801159 Two Horns Brass & Stenciled**

Two horns comprising a brass hunting horn and one tole painted horn signed "Ray Scott". 25 1/2" high, 5 1/2" wide to 40 1/2" high, 4 1/2" wide. Condition: oxidation, a couple small dents, soiling. 100.00 - 200.00

**96 Inv#: 1800024 Group Early Children's Toys**

Group of early children's toys including a gyroscope, still banks and other items. 3 1/4" high, 2 1/4" wide to 6" high, 5 1/2" wide. Condition: stains, rust, losses. 200.00 - 300.00

**97 Inv#: 1785021 Two Unmounted Semiprecious Gemstones**

Two unmounted semiprecious gemstones. 1/2" high, 3/8" wide to 7/8" high, 5/8" wide. 80.00 - 100.00

**98 Inv#: 1422036 Manner of Calder, Gold Spiral Bracelet Charm**

In the manner of Alexander Calder (American, 1898 - 1976), small gold wire spiral form jewelry or bracelet charm. 1" high, 1/2" wide. Tests 10K, .4 DWT. Provenance: descended to the consignors from a grandmother who is believed to have received this charm from the artist during the time of a friendship in the 1950's, at the same time when she received a sterling silver bracelet by Alexander Calder which was sold at Sothebys NYC in 2012 for \$185,000, including the buyers premium. This



October Fine Estates Auction 10/4/2015

LOT #

charm was recently submitted for registration to the Calder Foundation in New York on behalf of the consignors but was not registered. 400.00 - 600.00

- 99 Inv#: 1801044 Spanish Colonial Mate Cup**
Spanish Colonial silver plate mate cup. 7" high, 4 1/2" wide. Condition: repair to rim. 200.00 - 300.00



- 100 Inv#: 1753016 Indian Colonial Era Water Vessel w/Cup**
Indian Colonial era water vessel with cup. 18 1/2" high (with handle), 14" wide. Condition: finish, fabric wear, stains. 200.00 - 300.00



- 101 Inv#: 1801142 Clodion Style Cast Bronze Urn/Lamp**
Clodion style cast bronze urn/lamp. 34" high, 9" wide. 500.00 - 600.00



- 102 Inv#: 1793002 Pair Bronze Egyptian Motif Bookends**
Pair of bronze Egyptian motif bookends, stamped on verso "WG Welford Solid Bronze". 5 1/4" high, 4 3/8" wide. Condition: patina wear, loss. 150.00 - 250.00



- 103 Inv#: 1801176 Pair Blown Glass Hurricane Shades**
Pair blown clear glass hurricane shades. 18" high, 7 1/2" diameter. 100.00 - 200.00



- 104 Inv#: 1801177 Large Repousse Continental Brass Alms Charger**
Large repousse Continental brass alms charger. 34 1/4" diameter. Condition: a few dents. 100.00 - 200.00

**LOT #**

- 105 Inv#: 1801012 Pair Indian Polychrome Architectural Ornaments**
Pair Indian polychrome carved architectural ornaments. 18 3/4" high, 5" wide. Condition: lacking tails. 100.00 - 200.00



- 106 Inv#: 1801141 Indian Bronze Bird Form Oil Lamp**
Indian bronze bird form oil lamp, on stand. 11" high, 8" wide. 100.00 - 200.00



- 107 Inv#: 1422041 Georg Jensen Sterling Bowl, Plus Four Items**
Four sterling silver items comprising a USA Georg Jensen bowl, footed salt, Ensko salt and silver capped glass salt and pepper. 3 1/8" high, 1 1/4" wide to 3 1/2" high, 7" diameter. Weight: 16.895 OZT. Condition: use wear, light scratches. 200.00 - 300.00



- 108 Inv#: 1785029 Religious Icon Gilt & Pigment/Panel**
Religious icon, gilt and pigment on panel. 14 1/2" high, 11 3/4" wide. Condition: soiling, losses, restored vertical break. 300.00 - 400.00



- 109 Inv#: 1736119 Alabaster & Brass Ceiling Fixture**
Alabaster and brass ceiling fixture. 11 1/2" diameter, approximately 20" high. Condition: a couple scratches, small chips to drill holes. 100.00 - 200.00



- 110 Inv#: 1801206 Peachblow Bottle Vase/Stand**
Peachblow bottle form vase, in matte finish. 10 3/8" high. 100.00 - 200.00



October Fine Estates Auction 10/4/2015

LOT #

111 Inv#: 1801010 Pair Italian Majolica Rope Handled Urns

Pair Italian majolica rope handled urns 16" high, 11 1/2" wide. Condition: small glaze chips. 200.00 - 300.00



112 Inv#: 1766024 French Casket in Silver Plate

French silver plate casket with Francis 1st of Blois Motif, lined in mahogany, signed "France". 6" high, 9 3/4" wide. Condition: plate wear, loss, glue residue in interior, a few scratches. 400.00 - 600.00



113 Inv#: 1736123 Pair Bronze/Copper Exterior Lantern Sconces

Pair of large copper, brass and metal exterior lantern sconces with acorn finials. 32" high, 17" wide. Provenance: from a circa 1902 Bedford, NY mansion owned by Florence J. Harriman, socialite, suffragist and diplomat. Condition: wear from exposure to elements. 500.00 - 600.00



114 Inv#: 1801024 Two Gilded Polychromed Santos Carvings

Two gilded polychromed Santos carvings. 11 1/4" high, 5" wide to 13 1/4" high, 6 1/2" wide. Condition: age cracks, losses. 300.00 - 400.00



115 Inv#: 1800015 Wedgwood Serving Dish, Pair Paris Porcelain Urns

A Wedgwood serving dish and pair of Paris porcelain urns. 3" high, 10 1/2" wide to 9" high, 7" wide. Condition: Wedgwood with restoration, chips, one urn with hairline crack, urns lacking lids. 80.00 - 100.00



116 Inv#: 1753024 Group Four Dutch Delft Tiles

Group of four Dutch Delft tiles. Approximately 5" high, 5" wide. Condition: crazing, cracks, chips, losses. 100.00 - 200.00



LOT #

117 Inv#: 1736125 Terracotta Architectural Ornament

Terracotta architectural ornament from a NYC brownstone. 15 1/2" high, 9 1/2" diameter. Condition: chips, stains, losses. 80.00 - 100.00



118 Inv#: 1804003 Jones & Walley Jasperware Pitcher & Beswick Jug

A Jones and Walley Jasperware pitcher and a Beswick jug. 5 1/2" high, 6" wide to 6 3/4" high, 8" wide. Condition: pitcher lacking lid. 80.00 - 100.00



119 Inv#: 1800029 Two Royal Worcester Porcelain Vases, Two Stands

Two Royal Worcester porcelain vases and a pair of English porcelain stands with impressed registry marks. 6 3/4" high, 3" wide to 10" high, 6 1/2" wide. Condition: small vase with foot chip, enamel, gilt wear, loss. 300.00 - 400.00



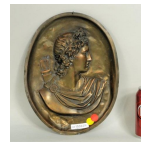
120 Inv#: 1785028 Religious Icon Pigment/Panel

Religious icon, pigment on panel with partial repousse brass banding, partial label verso "Veroniscen? 1600 Talet". 12 1/4" high, 11" wide. Condition: crazing, losses. 300.00 - 400.00



121 Inv#: 1801162 Classical Copper Relief Plaque

Classical copper relief plaque. 12" high, 9 1/4" wide. Condition: dents, dings. 100.00 - 200.00



122 Inv#: 1800022 Brass Tankard With Tinned Interior

Brass tankard with tinned interior. 6 1/4" high, 5 1/2" wide. Condition: base dents. 100.00 - 200.00



October Fine Estates Auction 10/4/2015

LOT #**123 Inv#: 1800019 Staffordshire Pottery Couple**

Staffordshire pottery couple 15" high, 10" wide.
Condition: crazing, small chips, hairline base crack, base stains, possible base restoration verso. 150.00 - 200.00

**124 Inv#: 1805001 Large Marquetry Inlaid Scenic Plaque**

Large marquetry inlaid scenic plaque circa 1930. 22" high, 42 1/2" long. 200.00 - 300.00

**125 Inv#: 1800020 Twelve Small Staffordshire Pottery Figures**

Twelve small Staffordshire pottery figures. 3" high, 2" wide to 5 1/2" high, 4" wide.
Condition: enamel wear, loss, chips. 200.00 - 300.00

**126 Inv#: 1800051 Group Six Porcelain, Glass & Other Items**

Group of six porcelain, glass and other items including a Canton ginger jar lamp and tulip vase. 2 1/4" high, 2" wide to 15" high, 5 1/2" wide. 100.00 - 200.00

**127 Inv#: 1800035 Three Small Treenware/Bone Articles**

Three small treenware/bone articles comprising a turned cup, wood string holder and snuff box. 2 1/2" high, 3" wide to 4 3/4" high, 2 1/2" wide.
Condition: box with chip. 80.00 - 100.00

**128 Inv#: 1726031 NE Native American Paint Decorated Splint Cradle**

New England Native American paint decorated splint cradle, c. 1900. 17" high, 14" wide, 19" long. Condition: stains, breaks, losses. 200.00 - 300.00

**LOT #****129 Inv#: 1800050 Three Early Gilt Wood Advertising Letters**

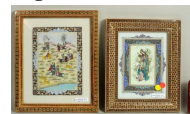
Three early gilt wood advertising letters "F R M". 12" high, 9" wide to 13 3/4" high, 10" wide. Condition: gilt wear, loss, M with residue. 100.00 - 200.00

**130 Inv#: 1785030 Two Art Plaques, One Toma Rosandic**

Two art plaques comprising Toma Rosandic (Croatia, 1878-1958), "Mother and Child" bronze, signed lower right together with a silver Roman style repousse plaque mounted on panel, unsigned. 9 1/2" high, 7 3/4" wide to 7 7/8" high, 11" wide. 1,000.00 - 1,500.00

**131 Inv#: 1801161 Two Persian Miniature Paintings**

Two Persian miniature paintings, framed, not examined out of frames. Sight size: 8 3/4" high, 6 1/2" wide to 11 1/4" high, 9" wide. Frame size: 12 1/4" high, 10" wide to 13 1/2" high, 11" wide. 100.00 - 200.00

**132 Inv#: 1072439 Fine Chinese Sang de Boeuf Vase/Lamp**

Chinese sang de boeuf long neck vase, mounted as lamp on bronze base. Vase 15" high. 400.00 - 500.00

**133 Inv#: 1769323 Small Chinese Carved Spinach Jade Bowl**

Small Chinese carved spinach jade bowl. 3 1/2" wide, 1" high. 100.00 - 200.00

**134 Inv#: 1769326 Chinese Figural Container & Carved Indian Horse**

Chinese bronze figural container on wood stand and a carved Indian horse and rider. 8 3/4" high, 4 1/4" wide to 10" high, 6" wide. 200.00 - 250.00



October Fine Estates Auction 10/4/2015

LOT #**135 Inv#: 1801123 Group Four Asian B/W Porcelain Vases**

Group of four Asian blue and white porcelain vases, comprising a lidded jar, a brass mounted vase, a large vase and a Chinese baluster vase. 10 1/2" high to 16 1/2" high. Condition: breaks and repairs to large vase; repaired rim chip to baluster vase; breaks and repairs to lidded jar; hairline cracks to brass mounted vase. 100.00 - 150.00

**136 Inv#: 1785042 Group Eastern European Wood Carvings**

Group of Eastern European wood carvings, comprising three polychrome figures, a mask and a small church font. 5 3/4" high to 13 1/2" high. Condition: losses, chips, wear. 80.00 - 100.00

**137 Inv#: 1801003 Group Fifteen Japanese Ninja Youth Dolls In Trunk**

Group of fifteen Japanese ninja youth dolls in trunk. Dolls: 4" high, 3" wide to 5" high, 3" wide. Trunk: 6 1/4" high, 12 1/4" wide. Condition: wear, tears, soiling, cracks, losses. 200.00 - 300.00

**138 Inv#: 1801218 Group Fifteen Asian Wood Display Stands**

Group of fifteen Asian wood display stands 1 1/2" high, 4 1/2" wide to 11" high, 11" wide. Condition: age cracks, wear, chips, losses. 100.00 - 200.00

**139 Inv#: 1801050 Group Ten Japanese Netsukes**

Group of ten Japanese carved wood animal form netsukes and figures, some signed. 1" high, 1 1/2" wide to 1 1/4" high, 2 1/2" long. 100.00 - 200.00

**LOT #****140 Inv#: 1801145 Chinese Carved Wood Window Grille Panel**

Chinese carved wood window grille panel. 44" high, 16 1/2" wide. Condition: small losses. 100.00 - 200.00

**141 Inv#: 1801200 Group Seven Chinese Carved Panels**

Group of seven Chinese carved panels, the majority pierce carved, partial and parcel gilt. Various subjects and sizes. The largest 15" high, 12" wide. The smallest: 8" high, 4 1/2" wide. 100.00 - 200.00

**142 Inv#: 1801211 Group Ten Japanese Netsukes**

Group of ten Japanese carved wood animal form netsukes and figures, some signed. 1 1/4" high, 2" wide to 1 3/4" high, 2" wide. 100.00 - 200.00

**143 Inv#: 1801093 Japanese Noh & Balinese Lion Mask**

A Japanese noh theatre and a Balinese lion mask. 8" high, 6" wide to 10" high, 11 1/2" wide. 100.00 - 150.00

**144 Inv#: 1785041 Group Asian Decorative Arts**

Group of Asian decorative arts, comprising a carved hardstone figure, a carved wood deity, and a small archaic style gilded brass vessel. 4 1/2" high to 9" high. Condition: dents, dings, oxidation, crack to vessel rim. 80.00 - 100.00

**145 Inv#: 1801212 Group Ten Japanese Netsukes**

Group of ten Japanese carved wood animal form netsukes and figures, some signed. 1 1/4" high, 1 3/4" long to 2 3/4" high, 1 1/2" wide. 100.00 - 200.00



October Fine Estates Auction 10/4/2015

LOT #**146 Inv#: 1801028 Pair Framed Asian Style Prints & Plaque**

Three decorative arts items comprising a pair of Asian style prints and a reproduction plaster of Paris plaque. Framed, not examined out of frames. 21 1/2" high, 15" wide to 35 1/2" high, 16" wide. Condition: chips, residue to plaque, stains, toning to prints. 80.00 - 100.00

**147 Inv#: 1801066 Group Eleven Asian Display Stands**

Group of eleven Asian wood display stands. 5 1/2" diam. to 3 1/2" high, 15" long. Condition: use wear, break to one small round stand, lacquer stand with cracks, small losses. 100.00 - 200.00

**148 Inv#: 1801201 Seven Chinese Carved Panels**

Seven Chinese carved panels all partial and parcel gilt, various sizes and subjects. The largest 10" high, 20" wide. The smallest 6" high, 6" wide. 100.00 - 200.00

**149 Inv#: 1801213 Group Ten Japanese Netsukes**

Group of ten Japanese carved wood animal form netsukes and figures, some signed. 1" high, 2 1/4" wide to 1 1/2" high, 2 1/4" long. 100.00 - 200.00

**150 Inv#: 1072414 Near Pair Chinese Porcelain Drum Form Urns**

Near pair Chinese porcelain drum form urns, possibly hatstands. 11" high, 5" diameter. 200.00 - 300.00

**151 Inv#: 1769322 Group Seven Asian Porcelain Items**

A group of seven Asian porcelain items, comprising two Japanese Imari reticulated oval platters, a Chinese export cup and damaged saucer together with a repaired bowl, and a miniature pair of Japanese Satsuma urns. 3" high to 4" high, largest 12" wide. Condition: chip out of export saucer, hairline and large repair to export bowl, chips to mouth of both miniature Satsuma vases. Provenance:

**LOT #**

collection of David L. Bronson. 100.00 - 150.00

152 Inv#: 1753025 A Tang Dynasty Tomb Figure & Four Bowls

A Tang dynasty tomb figure and four bowls. 2" high, 4 3/4" wide to 14" high, 4" wide. Condition: chips, cracks, losses, encrustation. 300.00 - 400.00

**153 Inv#: 1801002 Chinese Inkstone Qing Dynasty**

Cased Chinese inkstone, Qing Dynasty (1796-1820), 11" long, 3 7/8" wide. Condition: with some cracks. 400.00 - 500.00

**154 Inv#: 1801214 Group Nine Japanese Netsukes**

Group of nine Japanese carved wood animal form netsukes and figures, some signed. 1 3/4" high, 1 1/2" wide to 1 1/4" high, 2 1/4" long. 100.00 - 200.00

**155 Inv#: 1801006 Three Asian Bronze Vessels**

Three Asian bronze vessels 3 1/4" high, 3 3/4" diameter to 6" high, 10" wide. Condition: rim cracks to one. 100.00 - 200.00

**156 Inv#: 1785032 Group Seven Bronze & Brass Items**

Seven bronze and brass items comprising a bronze faun sculpture, unsigned, candlestick, mortar and pestle, weight, a marked crucible set, a brass grinder and a relief decorated Middle Eastern vessel. 1 3/4" high, 3" wide to 16" high, 6 1/2" diameter. 200.00 - 300.00

**157 Inv#: 1384020 Pair Japanese Woodblock Prints**

Pair of Japanese woodblock prints depicting geisha. Framed, not examined out of frames. Sight size: approximately 12 1/2" high, 8 1/4" wide. Frame size: 18 1/2" high, 13 1/4" high. Condition: woman with bucket with insect damage, stains, losses, soiling, other with soiling, scuff to attendants tablet. 200.00 - 300.00



October Fine Estates Auction 10/4/2015

LOT #**158 Inv#: 1801215 Group Eleven Japanese Netsukes**

Group of eleven Japanese carved wood figural netsukes and figures, some signed. 1 3/4" high, 1 1/4" wide to 2 1/2" high, 2" wide. 100.00 - 200.00

**159 Inv#: 1801001 Large Chinese Cloisonne Censer**

Large Chinese cloisonne censer, with dragon handles. 18 1/2" high, 14" wide. Condition: losses, repair. 700.00 - 900.00

**160 Inv#: 1384033 Two Asian Stone Figures**

Two carved stone Asian figures. 6" high, 2 1/2" wide. Condition: chips, losses to figures. 100.00 - 200.00

**161 Inv#: 1801009 Three Chinese Blanc de Chine Figures**

Three Chinese Blanc de Chine figures, two foo dogs and a Quan Yin figure. 6 1/4" high, 5" wide to 16 1/4" high, 5 1/4" wide. Condition: Quan Yin with crazing, losses, repair. 100.00 - 200.00

**162 Inv#: 1801216 Group Twelve Japanese Netsukes**

Group of twelve Japanese carved wood figural netsukes and figures, some signed. 1 1/2" high, 1 1/2" wide to 1 3/4" high, 1 1/2" wide. 100.00 - 200.00

**163 Inv#: 1801016 Large Japanese Bronze Champeve Urn**

Large Japanese bronze and champeve urn with elephant form handles. 19" high, 12" wide. 200.00 - 300.00

**LOT #****164 Inv#: 1787005 Group Chinese Export Porcelain Items**

Group of seven Chinese export porcelain items, comprising a helmet form gravy boat (pitcher), two teacups and four small bowls. 1 3/4" high by 2 7/8" wide to 5 1/4" high by 6 1/8" wide. Condition: gilt and enamel wear, teabowls and saucers with chips, cracks and repairs. 200.00 - 300.00

**165 Inv#: 1801018 Two Large Japanese Satsuma Vases On Stands**

Two large Japanese Satsuma vases on stands 13 1/2" high, 6 1/2" wide to 14 1/4" high, 7" wide. Condition: smaller vase drilled for lamp; gilt wear, loss, larger with hairline rim crack. 200.00 - 300.00

**166 Inv#: 1789001 Possibly Ghandara Carved Stone Lion**

Possibly Ghandara carved stone lion, likely an architectural fragment, now mounted on a wood and marble stand. Figure 7 3/4" high, 12" long, 6 1/2" deep. Provenance: Private Southern Collection 800.00 - 1,200.00

**167 Inv#: 1801019 Group Six Asian & Indian Figural Wood Carvings**

Group six Asian and Indian figural wood carvings. 11 3/4" high, 3 1/2" wide to 14 1/2" high, 6 1/2" wide. Condition: age cracks, losses. 100.00 - 200.00

**168 Inv#: 1785026 Indian Carved Ivory Elephant**

Indian carved ivory elephant. 4 1/2" high, 4 3/4" long. Condition: age cracks. International clients are ineligible to bid on this item. It is for sale only within the United States except not to CA, NY, NJ. It is the responsibility of the buyer to obtain any necessary documentation, permits or paperwork necessary including but not limited to such documents as required to comply with any and all requirements and restrictions imposed by Federal trade regulations related to endangered species prior to finalization of any sale. 200.00 - 300.00



October Fine Estates Auction 10/4/2015

LOT #**169 Inv#: 1801023 Japanese Meiji Bronze Urn Now As Lamp**

Japanese Meiji bronze urn, now as lamp. Urn:
24 1/2" high, 9 1/2" wide. Condition: patina
wear. 300.00 - 400.00

**170 Inv#: 1384025 Pair Japanese Signed Vases**

Pair of Japanese mixed metal vases with peony
decoration, both with incised signature on body.
7 1/4" high, 7" wide. Condition: finish wear,
scratches, soiling, interior residue. 200.00 -
300.00

**171 Inv#: 1801025 Pair Antique Chinese Painted Yoke Back Arm Chairs**

Pair antique Chinese yoke back painted
armchairs, Shanxi province, circa 1850.
Scrolling crest rail with ears extending beyond
the stiles, S-curved rectangular splat and out
scrolled arms, shaped beaded apron, and
brackets framing the legs. 47" high, 27" wide,
20" deep. Condition: some expected age use and
wear. 600.00 - 900.00

**172 Inv#: 1384014 Japanese Handled Bronze Urn, Signed**

Japanese handled bronze urn, signed on
underside, mounted on wood base. Urn: 11"
high, 11 3/4" diameter. Condition: calcification
to interior, feet drilled and bolted to base.
300.00 - 400.00

**173 Inv#: 1801026 Chinese Carved Side Table Cracked Ice Shelf**

Chinese carved side table with medial shelf and
lower "cracked ice" shelf. 30" high, 15" wide,
15" deep. Condition: some looseness, wear,
scratches and dings. 200.00 - 250.00

**LOT #****174 Inv#: 1782002 Chinese Carved & Lacquered Six Panel Screen**

Chinese carved and lacquered six panel screen.
72 1/4" high, 16" wide, 5/8" deep. Total length
128" long. Condition: chips, cracks, losses,
detached panels, soiling, wear. 300.00 - 400.00

**175 Inv#: 1782010 Japanese Hirado Bird Form Porcelain Bowl**

Japanese Hirado bird form porcelain bowl. 5"
high, 13 1/4" wide. Condition: base with
soiling, small red stain, interior with a few
scratches, two spur marks. 200.00 - 300.00

**176 Inv#: 1782005 Japanese School "Carp" Watercolor/Silk Panel**

Japanese School "Carp" watercolor on silk
panel, unsigned. Sheet: 34" high, 43" wide.
Panel: 42 1/2" high, 50 1/2" wide. Condition:
losses, restoration, soiling. 200.00 - 300.00

**177 Inv#: 1782012 Two Tibetan Painted Hide & Wood Drums**

Two Tibetan painted hide and wood drums. 4"
high, 14" diameter. Condition: age cracks, paint
wear, loss. 200.00 - 300.00

**178 Inv#: 1801032 Four Chinese Figural Soapstone Carvings**

Group of four Chinese figural soapstone
carvings 10 1/2" high, 3 1/2" wide to 14 1/4"
high, 4 1/2" wide. Condition: small chips, Quan
Yin, hatted man with repairs. 300.00 - 400.00

**179 Inv#: 1782013 Chinese Ladies Dressing Case with Mirror**

Chinese ladies dressing case with mirror, two
lower drawers with bat form handles. 6 1/4"
high, 10 3/4" wide. Condition: age cracks, small
losses, frame nicks, lower section of wood
frame lacking veneer. 200.00 - 300.00



October Fine Estates Auction 10/4/2015

LOT #**180 Inv#: 1782003 Asian Parcel Lacquered Chest On Stand**

Asian parcel lacquered chest on stand with pierced brass fittings. 51" high, 32 1/4" wide, 18" deep. Condition: lower left door lacking brass hinge pins, presently with nails, corner loss to top board, stand lacking stretcher. 200.00 - 400.00

**181 Inv#: 1782014 A Chinese Tea Caddy & Wig Stand**

Two Chinese Porcelain items comprising a large tea caddy and transfer decorated wig stand. 6 1/8" high 5" wide to 6 1/2" high, 5 1/8" wide. Condition: wig stand with enamel wear, edge chip; caddy with small base chip. 200.00 - 300.00

**182 Inv#: 1801033 Five Chinese Figural Soapstone Carvings**

Five Chinese figural soapstone carvings, 6" high, 3 1/2" wide to 9" high, 5" wide. Condition: small chips. 200.00 - 300.00

**183 Inv#: 1782015 Group Chinese Blue & White Items**

Group of Chinese porcelain blue and white items comprising a covered urn, drum form scroll weight, Canton tureen and pair of miniature vases together with three wood stands. 3 1/2" high, 1 7/8" wide to 11" high, 4" wide. Condition: chips, soiling, tureen lacking lid. 200.00 - 300.00

**184 Inv#: 1072441 Japanese Satsuma Porcelain Palace Vase**

Important Japanese Satsuma porcelain palace vase, circa 1890, with moriage and gilt decoration, having elaborate tassel form handles, body with depictions of Samurai one side, interior figural scene verso. 42 3/4" high, 18 1/2" diameter. Condition: hairline rim cracks, small chips, gilt, enamel wear, loss. 1,000.00 - 1,500.00

**LOT #****185 Inv#: 1801034 Seven Chinese Stone Animal Carvings**

Seven Chinese stone animal carvings, three pair of foo dogs and a lobster carved seal blank. 5 1/4" high, 2 1/4" wide to 6 1/2" high, 3 1/4" wide. Condition: chips. 200.00 - 300.00

**186 Inv#: 1782016 Chinese Blue & White Ginger Jar**

Chinese blue and white ginger jar with scene of figures, mountains and water with wood cover and stand. 9" high, 8" wide. Condition: hairline cracks to base, small chip to interior rim. 300.00 - 400.00

**187 Inv#: 1801037 Asian Porcelain Double Gourd Vase Lamp, 20th C**

Asian porcelain double gourd vase lamp, 20th century. Vase: 23 1/2" high, 11 1/2" wide. 100.00 - 200.00

**188 Inv#: 1782017 Cinnabar Vase, Lacquer Trays**

Group of Asian and other items comprising a carved cinnabar vase, porcelain teapot, two lacquer trays and teapot and a pair of opera glasses. 2 1/2" high, 4 3/8" wide to 10 3/4" long, 7 1/2" wide. Condition: lacquer with cracks, losses; chips, hairline crack to teapot; cracks, losses to glasses. 100.00 - 200.00

**189 Inv#: 1782023 Small Japanese Two Panel Screen**

Small Japanese two panel screen, "Mountainous Landscape" watercolor and gilt on paper, unsigned. 19" high, 42" wide. Condition: stains, tears lower left corner. 100.00 - 200.00

**190 Inv#: 1782018 Pair Chinese Blue & White Porcelain Ginger Jars**

Pair Chinese blue and white porcelain ginger jars on wood stands. 9 1/2" high, 7 1/2" wide. Condition: one lid with edge chips, one lid possibly a replacement, jar rims with chips. 300.00 - 400.00



October Fine Estates Auction 10/4/2015

LOT #**191 Inv#: 1801038 Asian Porcelain Octagonal Blue & White Charger**

Asian porcelain octagonal blue and white charger, together with a damaged blue and white vase. 13 1/2" diameter to 16 1/2" high, 8" wide. Condition: charger with edge chip, edge loss, vase with chips, large break, repair.

100.00 - 200.00

**192 Inv#: 1782019 Chinese Blue & White Porcelain Ginger Jar w/Lid**

Chinese blue and white porcelain ginger jar with wood lid on wood stand. 9 1/2" high, 8" wide. Condition: rim chips, edge chip to wood lid. 200.00 - 300.00

**193 Inv#: 1801040 Japanese Porcelain Relief Molded Blue & White Vase**

Japanese porcelain relief molded blue and white vase. 12 1/4" high, 5 1/2" wide. 100.00 - 200.00

**194 Inv#: 1801042 Japanese Bronze Footed Censer**

Japanese bronze footed censer. 6 1/2" high, 9 3/4" wide. 200.00 - 300.00

**195 Inv#: 1801043 Asian Bronze Buddha Figure**

Asian bronze Buddha figure on wood stand. 8" high, 5" wide. Condition: a few oxidation spots. 100.00 - 200.00

**196 Inv#: 1801071 Group Six Yixing Teapots, Signed**

Group six Yixing teapots, signed. 2 1/2" high, 6" wide to 5 1/2" high, 7 1/4" wide. Condition: small chips. 200.00 - 300.00

**LOT #****197 Inv#: 1782008 Two Pair Asian Cabinets**

Two pair Asian cabinets, comprising a pair of apothecary cabinets and a pair of cabinets on stands. 26" high, 18" wide, 10 3/4" deep to 26 1/2" high, 20" wide, 9" deep. Condition: finish wear, loss, chests on stands with losses, repairs to legs, one with bent brasses at top, partially detached leg, one apothecary door lacking hinge pins, detached, chips. 200.00 - 400.00

**198 Inv#: 1801072 Two Japanese Kutani Tazza, Signed**

Two Japanese Kutani tazza, both signed. 4" high, 9" wide to 8 1/2" high, 9 1/4" wide. Condition: larger with firing defect to base. 300.00 - 400.00

**199 Inv#: 1072435 Japanese Four Panel Painted Screen**

Japanese four panel painted screen depicting various animals. 53 1/4" high, 89" wide. Condition: wear, stains, tears, losses, mounted on panel. 400.00 - 600.00

**200 Inv#: 1801073 Three Japanese Satsuma Items Jar & Two Vases**

Three Japanese Satsuma items, comprising a covered jar and two vases. The largest: 15 1/2" high, 7 1/2" diameter. The smallest 7" high, 7" diameter. 200.00 - 300.00

**201 Inv#: 1782009 Two Chinese Export Gilt Lacquer Nesting Tables**

Two Chinese export gilt lacquer nesting tables, both depicting courtyard scenes. 25 1/2" high, 12 1/2" wide, 10" deep to 27" high, 16 1/2" wide, 11 1/2" deep. Condition: gilt, lacquer wear, crazing, chips, losses, loose joints, smaller with broken stretcher. Originally set of three, now missing one. 100.00 - 200.00



October Fine Estates Auction 10/4/2015**LOT #****202 Inv#: 1801074 Group Six Asian Imari & Kutani Plates**

Group of six Asian Imari and Kutani plates including a pair with shaped rim. 8 1/2" diameter to 9" diameter Condition: Chinese export plate with hairline cracks, chip. 100.00 - 200.00

**203 Inv#: 1801078 Group Three Asian Enamel/Cloisonne Wares**

Group of three Asian enamel and cloisonne items, comprising an enameled pictorial charger and two cloisonne vases. Charger 11 1/2" diameter; vases 7 1/2" and 5" high. Condition: some enamel crazing to larger vase. 100.00 - 200.00

**204 Inv#: 1801075 Group Seven Japanese Porcelain Plates and Bowls**

Group of seven Japanese porcelain plates and bowls. 8 1/2 diam. to 10 1/4" diam. Condition: one with rim crack, repair; enamel wear, loss. 100.00 - 200.00

**205 Inv#: 1782020 Five Indian Miniature Paintings Depicting Women**

Five Indian miniature paintings depicting scenes of women, gouache on paper, unsigned. Framed, not examined out of frames. Sight size: 5 1/4" high, 7" wide to 8 1/4" high, 8 1/4" wide. Frame size: 12 1/2" high, 10 3/4" wide to 12 1/4" high, 14" wide. Condition: a few small stains, one with partially detached moulding. 200.00 - 300.00

**206 Inv#: 1801076 Group Sixteen Japanese Kutani & Imari Bowls/Trays**

Group of sixteen Japanese Kutani and Imari bowls, cups and trays. 2 3/4" high, 3 3/8" wide to 7" diam. Condition: gilt, enamel wear, a few chips. 200.00 - 300.00

**LOT #****207 Inv#: 1801079 Group Fifteen Chinese Porcelain Items**

Group of fifteen Chinese blue and white porcelain items including a Canton ginger jar, six bowls and other items. 5 1/2" diam. to 7 1/4" high, 6 1/2" wide. Condition: a few chips. 200.00 - 300.00

**208 Inv#: 1804004 Chinese Cloisonne Tazza**

Chinese Cloisonne tazza 4 3/4" high, 8 1/4" wide. 100.00 - 200.00

**209 Inv#: 1651012 Chinese Intricately Carved Tusk Panel**

Chinese intricately carved ivory tusk panel, depicting the procession of a couple on horseback with their attendants and onlookers, signed verso below carved scene of a lady gardener. 10" high, 2 1/2" wide, 1" deep. Provenance: purchased by the prior owners from a shop on Charles Street in Boston in 1950's. International clients are ineligible to bid on this item. It is for sale only within the United States except not to CA, NY, NJ. It is the responsibility of the buyer to obtain any necessary documentation, permits or paperwork necessary including but not limited to such documents as required to comply with any and all requirements and restrictions imposed by Federal trade regulations related to endangered species prior to finalization of any sale. 700.00 - 900.00

**210 Inv#: 1801080 Group Five Asian Porcelains**

Group of five Asian porcelains including a Kutani sugar bowl, crackle vase and other items. 4 1/2" diam. to 4" high, 6 1/2" wide. Condition: discoloration to back of bowl. 100.00 - 200.00



October Fine Estates Auction 10/4/2015

LOT #**211 Inv#: 1801081 Group Six Japanese Kutani Plates**

Group of six Japanese Kutani plates with peacock decoration. 8 1/2" diameter. 150.00 - 250.00

**212 Inv#: 1801082 Group Twelve Japanese B/W Porcelain Items**

Group of twelve Japanese blue and white porcelain items including a fish form box, two cache pots and other items. 3" high, 3" wide to 2" high 10" long. Condition: chips. 100.00 - 200.00

**213 Inv#: 1801095 Pair Chinese Bronze Champleve Vases**

Pair Chinese bronze champleve vases. 8 1/2" high, 5 1/2" wide. 100.00 - 200.00

**214 Inv#: 1801083 Japanese Porcelain Vase and Six Imari Bowls**

Japanese porcelain vase and six Imari bowls, some signed. 2 1/2" high, 4 1/2" wide to 4" high, 9 1/2" wide. Condition: three bowls with chips, cracks. 200.00 - 300.00

**215 Inv#: 1801096 Two Asian Champleve Urns**

Two Asian brass and champleve handled urns. Each 12" high. 150.00 - 200.00

**216 Inv#: 1801097 Group Three Japanese Cloisonne Urns**

Group of three modern Japanese cloisonne urns, comprising one pair of urn form and a single colorful baluster form. Pair 12" high, single 15 1/2" high. Condition: single with dent to rim. 200.00 - 300.00

**LOT #****217 Inv#: 1801098 Chinese Leather Trunk, Boxes & Food Basket**

Chinese leather trunk, a Tibetan box, a Chinese porcelain lacquer box and carved and gilded food basket. 3 1/2" high, 5 1/4" wide to 12 1/2" high, 14 1/2" wide. Condition: trunk lacking metal boss, box with lacquer losses. 100.00 - 200.00

**218 Inv#: 1801084 Group Six Asian Porcelain Items**

Group of six Asian porcelain items including a Chinese export plate, a celadon fluted bowl and other items, some signed. 4 1/4" diam. to 10 1/4" high, 12 1/2" wide. Condition: a few chips, enamel wear, loss. 200.00 - 300.00

**219 Inv#: 1801099 Monumental Chinese Cloisonne Censer**

Monumental Chinese cloisonne censer. 24 1/2" high, 18 3/4" wide. 800.00 - 1,200.00

**220 Inv#: 1801100 Chinese Mineral Tree In Cloisonne Urn**

Chinese mineral tree in cloisonne urn. 23 1/4" high, 14" wide. Condition: bend to one corner of urn, 3/4" horizontal crack along inner brass banding at rim, one foot slightly bent, chips, losses, cracks to tree. 200.00 - 300.00

**221 Inv#: 1801103 Group Four Japanese Satsuma Vases**

Group four Japanese Satsuma vases, the two smaller signed and an Imari vase, signed. 3 3/4" high, 2 1/4" diameter to 10" high, 5 3/4" wide. Condition: smallest with rim chip. 200.00 - 300.00

**222 Inv#: 1801104 Chinese Carved & Gilt Wood Architectural Element**

Chinese carved and gilt wood architectural element. 9 1/2" high, 53 1/2" long. Condition: gilt wear, loss. 200.00 - 300.00



October Fine Estates Auction 10/4/2015**LOT #****223 Inv#: 1801107 Group Five Chinese Embroidered Silk Panels**

Group of five Chinese embroidered silk panels. Framed, not examined out of frames. Sight size: 23" high, 10 1/2" wide to 24 1/2" high, 14 3/4" wide. Frame size: 25" high, 12 1/4" wide to 26 1/4" high, 16 3/4" wide. Condition: stains, tears, losses. 300.00 - 400.00

**224 Inv#: 1801086 Pair Large Japanese Kyoto Satsuma Vases**

Pair of large Japanese Kyoto Satsuma vases. 18" high, 7" diameter. Condition: crazing, stains. 600.00 - 800.00

**225 Inv#: 1801111 Chinese Polychromed Porcelain Jardiniere/Stand**

Chinese polychromed porcelain jardiniere with stand. Jardiniere 7 1/4" high, 10 3/4" diameter. Condition: slight enamel wear. 200.00 - 300.00

**226 Inv#: 1801133 Two Chinese Reverse Glass Paintings**

Two Chinese reverse glass paintings. Framed, not examined out of frames. Sight size: 13 1/2" high, 9 1/2" wide to 21" high, 15" wide. Frame size: 15" high, 11" wide to 23 1/2" high, 17" wide. Condition: larger with a couple scratches in foliage, smaller with losses lower center. 200.00 - 300.00

**227 Inv#: 1801087 Large Japanese Satsuma Vase**

Large Japanese Satsuma vase depicting samurai, signed. 18 3/4" high, 7" wide. Condition: a couple small scratches. 300.00 - 400.00

**228 Inv#: 1801134 Large Asian Celadon Porcelain Vase**

Large Asian celadon porcelain vase, signed, on wood stand. 21" high, 11" diameter. 200.00 - 300.00

**LOT #****229 Inv#: 1801135 Seven Japanese Moriage Vases w/Moriage Urns**

Seven Japanese moriage vases including moriage urns, signed. 6 1/2" high, 4 1/2" wide to 14 3/4" high, 6" wide. Condition: gilt, enamel wear, loss, rim cracks, chips, losses. 100.00 - 200.00

**230 Inv#: 1801185 Japanese Red Glazed Studio Pottery Vases**

Japanese red glazed studio pottery, two vases. The larger signed and a smaller double gourd example. The larger 15 1/2" high, the smaller 8 1/4" high. 100.00 - 200.00

**231 Inv#: 1072334 Chinese Lacquer Altar Table, 19th C.**

Chinese lacquer altar table, 19th century, with incised and polychromed decoration on pierce carved legs with stretchers. 32 1/2" high, 48 1/2" wide, 16 1/2" deep. Condition: restoration, lacquer wear, loss, losses. 700.00 - 900.00

**232 Inv#: 1801106 Large Japanese Kutani Cooking Pot**

Large Japanese Kutani cooking pot, signed on lid. 7 1/2" high, 14" wide. Condition: crazing, hairline crack to lid interior. 100.00 - 200.00

**233 Inv#: 1782001 Chinese Carved & Lacquered Eight Panel Screen**

Chinese carved and lacquered eight panel screen, each panel 84 1/2" high, 16" wide, 3/4" deep. Total length 128" long. Condition: chips, cracks, losses, detached panels, soiling, wear, needs hinge reattachment. 300.00 - 400.00

**234 Inv#: 1801112 Japanese Footed Bronze Urn on Wood Stand**

Japanese footed bronze urn on wood stand. Urn 10" high, 12 1/2" wide. Condition: urn lacking bottom, one small hole near opening. 200.00 - 300.00



October Fine Estates Auction 10/4/2015

LOT #

235 Inv#: 1072440 Pair Chinese Hardwood Arm Chairs

Fine pair of hardwood armchairs with rectangular backs with stepped crests, vertical slat back with floral carved panels, curved arms and shaped front seat apron. Chinese, 19th century. 39 1/2" high, 22" wide, 19" deep. 300.00 - 400.00



236 Inv#: 1801088 Group Six Japanese Porcelain Vases

Group six Japanese porcelain vases comprising a blue and white basket form, two Satsuma, a bamboo form, wave motif and a dragon handled vase. 10 1/2" high, 8 1/2" wide to 17 1/4" high, 6" wide. Condition: gilt wear, loss, chips, cracks, repairs, wave motif cut down. 300.00 - 400.00



237 Inv#: 1801108 Continental Carved Oak Architectural Panel

Continental carved oak architectural panel, framed. Sight size: 18 1/4" high, 12 3/4" wide. Frame size: 24 3/4" high, 19" wide. 300.00 - 400.00



238 Inv#: 1801163 Japanese Bronze Mirror

Japanese bronze mirror, signed. 13 1/4" high, 9 1/2" wide. Condition: partially missing cane handle wrap. 200.00 - 300.00



239 Inv#: 1801165 Chinese Polychromed Porcelain Fu Lion

Chinese polychromed porcelain Fu lion on wood stand. Fu lion 18" high, 6 1/2" wide. 200.00 - 300.00



240 Inv#: 1801217 Chinese Porcelain Neti Pot

Chinese porcelain neti pot on stand. 2 3/4" high, 4 1/4" wide. 200.00 - 300.00



LOT #

241 Inv#: 1072436 Pair Large Framed Asian Oil Painted Canvas Panels

Pair of large framed Korean oil painted canvas panels with floral and phoenix decoration, in original frames and mounted behind glass. 19th century (Minhwa - Hwajo - do). 22" wide, 71" high. 600.00 - 900.00



242 Inv#: 1766022 Chinese Rosewood Brush Pot

Chinese rosewood brush pot intricately carved with travelers, signed in calligraphy. 6" high, 4 1/4" diameter. Condition: age cracks, a few small rim chips. 300.00 - 500.00



243 Inv#: 1766023 Four Chinese Ming Bowls

Four Ming Chinese bowls, "The Hatcher Collection", all four labeled as such, signed with Ming four character mark. Provenance: Hatcher Collection, Christies Auction, Amsterdam 1984. Approx. 1 1/4" high, 3 7/8" diameter. Condition: rim chips, foot chips, one with spur marks in interior, slight enamel wear. 400.00 - 600.00



244 Inv#: 1801102 Japanese Porcelain Kutani Cat

Japanese porcelain Kutani cat figure. 3 1/2" high, 8" long. Condition: small foot chip. 200.00 - 300.00



245 Inv#: 1807003 Large Japanese Cloisonne Urn

Large Japanese bronze cloisonne censer. 27" high, 18" wide. Condition: dents, losses, repairs, small cracks to tail of Shishi. 200.00 - 300.00



October Fine Estates Auction 10/4/2015

LOT #**246 Inv#: 1807004 Two Asian Glass Vases**

Two Asian etched glass vases, both signed. 6 3/4" high, 4 1/2" wide. Condition: each with small scratch/scuff near base. 100.00 - 200.00

**247 Inv#: 1801091 Two Japanese Satsuma Vases**

Two Japanese Satsuma vases, the larger signed. 15 3/4" high, 4 3/4" wide to 16 3/8" high, 6 1/2" wide. Condition: larger with hairline rim crack. 200.00 - 300.00

**248 Inv#: 1801143 Two Asian Fan Paintings**

Two Asian fan paintings, including a horse in a landscape, signed. Both framed, not examined out of frames. Sight size: 14" high, 22" wide to 11 3/4" high, 24 1/2" wide. Frame size: 15 1/2" high, 23 1/2" wide to 13 3/4" high, 26 1/2" wide. Condition: light soiling, toning to horse. 200.00 - 300.00

**249 Inv#: 1807006 Japanese Woodblock Print**

Japanese woodblock print depicting a geisha and attendants. Sight size: 11 1/2" high, 7 1/2" wide. Frame size: 17" high, 12 1/4" wide. 80.00 - 100.00

**250 Inv#: 1417030 Paul Manship, Gilded Bronze "Flight of Europa"**

Paul Manship (American, 1885-1966), bronze, "The Flight of Europa", parcel-gilt patina on 2" high onyx base. Unsigned, inscribed 'A. Kunst FDY NYC' under left dolphin. 21 1/2" high, 31 1/4" long, 8 1/2" wide. Accompanied by a letter of authentication and restoration from Paul Cavanaugh, Bronze Sculpture Consultation Services Ltd., Smithfield, RI dated July 6, 2015. Cast in 1925.

Literature: P. Vitry, Paul Manship, Paris, 1927, p. 46, pl. 25, another example illustrated. The National Sculpture Society, American Sculptors Series 2: Paul Manship, New York, 1947, p. 15, another example illustrated. E. Murtha, Paul Manship, New York, 1957, pp. 163-64, no. 177, pl. 30, another example illustrated.

**LOT #**

T. Armstrong, et al., 200 Years of American Sculpture, New York, 1976, p. 124, another example illustrated.

H. Rand, Paul Manship, exhibition catalogue, Washington, D.C., 1989, p. 68, another example illustrated.

J. Manship, Paul Manship, New York, 1989, pp. 92-93, 101, 106, 108-09, pl. 99, other examples illustrated.

Provenance: ex collection of Catherine Bretillot; property of a charitable trust. 100,000.00 - 200,000.00

251 Inv#: 1736117 Modernist Chrome Barcelona Chair

Modernist chrome Barcelona chair upholstered in blue wool. 27 3/4" high, 26 1/2" wide, 22 1/2" deep. Condition: fading to upholstery, finish wear, loss, slight rust to legs. 200.00 - 300.00

**252 Inv#: 1792003 Latin American Terracotta Pottery Vessel**

Latin American terracotta pottery vessel depicting a man in a hat atop a melon. 13 3/4" high, 10 1/4" wide. Condition: head detached, previously reglued, missing left front foot. 300.00 - 500.00

**253 Inv#: 1791001 Chrome & Black Glass Modernist Dining Table**

Modernist chrome and black glass dining table 29 1/2" high, 33 1/2" wide, 51 1/4" deep. 300.00 - 400.00

**254 Inv#: 1763001 Saarinen Design Glass/Chrome Tulip Table/4 Chairs**

Original Saarinen design glass and chrome tulip table and four lucite chairs by Chromcraft, circa 1960's, chairs with Chromcraft labels on underside. 35 1/2" high, 20" wide, 19" deep to 29 1/4" high, 42" diameter. Condition: soiling, stains, marring to seats, edge chips to seat frames, oxidation to chrome, finish wear, scratches to bases. 500.00 - 600.00



October Fine Estates Auction 10/4/2015

LOT #**255 Inv#: 1050476 Peter Lipman-Wulf Pottery Bowl, Signed**

Peter Lipman-Wulf (German, 1905-1993)
pottery bowl with enameled montage of musical instruments, signed on base, dated 1954. 3 3/4" high, 12 1/8" diameter. Condition: a couple tiny glaze chips to rim, light crazing. 200.00 - 300.00

**256 Inv#: 1791002 Calligaris Modernist Upholstered Dining Chairs**

Four Calligaris modernist chrome upholstered dining chairs. 32 1/2" high, 17 1/2" wide, 15 1/2" deep. 200.00 - 300.00

**257 Inv#: 1763002 Dux Mid Century Lounge Chair & Ottoman**

A Dux mid century lounge chair and adjustable ottoman, both upholstered in a green patterned fabric. 16" high, 25" wide, 18" deep to 38" high, 31" wide, 20" deep. Condition: use wear, fabric wear, stains, ottoman with frame cracks, repairs, glue residue, chair frame with scuffs. 1,000.00 - 1,500.00

**258 Inv#: 1791003 Raku Pottery Two Handled Vessel**

Raku pottery two handled vessel, signed. 10" high, 14" diameter. 100.00 - 200.00

**259 Inv#: 1072330 Modernist Asian Style Glass Top Coffee Table**

Modernist glass top coffee table in the Asian taste, with inset glass top and rounded corners with lacquer work decorated edge and legs. 41 1/2" square, 16" high 200.00 - 300.00

**260 Inv#: 1791004 Modernist Carved Wood Sculpture**

Modernist carved wood sculpture, possibly monogrammed. 18 3/4" high, 29 1/2" wide. 200.00 - 300.00

**LOT #****261 Inv#: 1791005 Modernist Chrome & Glass Pedestal Table**

Modernist chrome and glass pedestal table. 43" high, 12 1/4" wide, 12 1/4" deep. Condition: glass with edge chip. 200.00 - 300.00

**262 Inv#: 1050472 Jens Risom Design Upholstered Club Chair**

Fine mid-century upholstered easy chair, possibly Jens Risom, with rounded back and low arm profile. Swedish, 1960's. 34" high, 33" wide, 32" deep. Provenance: NY Private Collection. 200.00 - 300.00

**263 Inv#: 1050474 Peter Lipman-Wulf "Couple Embracing" Sculpture**

Peter Lipman-Wulf (German, 1905-1993), "Couple Embracing" carved wood sculpture, signed on base. 18 1/2" high, 5" wide. 200.00 - 300.00

**264 Inv#: 1648093 Pair 1950's Brass & Wrought Iron Candle Sconces**

Pair 1950's brass & wrought iron candle sconces 18" high, 9" wide. 100.00 - 200.00

**265 Inv#: 1572033 Italian Modern Ash & Composite Occasional Table**

Italian modern ash and composite occasional table. Round top on tapering faux bois legs. 28" high, 23 1/2" diameter. 100.00 - 200.00

**266 Inv#: 1791007 Modernist Double Pedestal Side Table**

Modernist double pedestal side table. 30 1/4" high, 10 1/4" wide, 58 1/2" long. 200.00 - 300.00



October Fine Estates Auction 10/4/2015

LOT #**267 Inv#: 1572036 Frank Lloyd Wright Style Arm Chair**

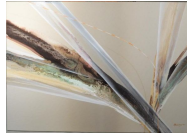
Frank Lloyd Wright style arm chair, with paneled back and sides. 40 1/2" high, 22" wide, 24" deep. 200.00 - 300.00

**268 Inv#: 1050480 Mid Century X Form Glass & Wood Round Coffee Table**

Mid century X form wood coffee table with round glass top. 18" high, 36" diameter. Condition: glass with chips, base with finish wear, loss, stains, scuffs. 100.00 - 150.00

**269 Inv#: 1791008 Modernist School "Abstract" Mixed Media/Canvas**

Modernist school "Abstract" mixed media on canvas signed, dated "Eyn Whariz"? 1982. 42 1/2" high, 60 1/4" wide. 200.00 - 300.00

**270 Inv#: 1648094 Pair 1960's Teakwood & Tile Table Lamps**

Pair of 1960's teakwood and tile table lamps. 35 1/2" high, 5 1/4" wide. 200.00 - 400.00

**271 Inv#: 1050492 Set Eight Edward Wormley Uph Walnut Dining Chairs**

Classic set of eight Edward Wormley for Dunbar bracket back upholstered walnut dining chairs, in perhaps original upholstery, with full padded back and upholstered seat set on stretcher based sculpted legs. Fine original condition, comprising two arm chairs and six side chairs. Circa 1950's. Arm: 34" high, 22 1/2" wide, 17" deep. Side: 34" high, 20 1/2" wide, 16 1/2" deep. 700.00 - 900.00

**LOT #****272 Inv#: 1050494 FIAM Molded Glass End Table**

FIAM molded and tempered glass tripod table by Fiam Italia, 1980's. Marked on lower part of one leg. 21" high, 21" wide, glass 5/8" thick. Condition: tiny chip and factory bubble in edge of top. 200.00 - 300.00

**273 Inv#: 1791011 Pair Modernist White Upholstered Chairs**

Pair modernist white upholstered chairs. 32" high, 25 3/4" wide, 17" deep. 300.00 - 400.00

**274 Inv#: 1050493 Edward Wormley Modern Walnut Dining Table, Leaves**

Edward Wormley modern walnut dining table with two leaves, top with banding, sides with recessed apron on shaped straight legs. 30" high, 44 1/2" wide, 67" long. Each leaf 14" long for total length of 95" long. 600.00 - 900.00

**275 Inv#: 1791012 Silas Seandal Cast Stone/Bronze Coffee Table**

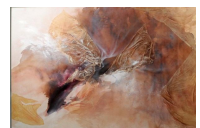
Silas Seandel large cast stone and bronze coffee table. Mounted on a square bronze clad pedestal. Signed and dated "1982". 15 1/2" high, 25 3/4" wide, 17" deep. 5,000.00 - 7,000.00

**276 Inv#: 1050499 Pair Swedish Modern Flared Back Easy Chairs**

Fine pair of mid-century flared back upholstered easy chairs, with turned and canted walnut legs. Probably Finn Juhl or Jens Risom, 1960's. 34" high, 33" wide, 32" deep. Provenance: NY Private Collection. 300.00 - 500.00

**277 Inv#: 1791009 Modernist School "Abstract" Mixed Media/Canvas**

Modernist school "Abstract" mixed media on canvas, signed in pencil "Jielke"? 60 1/4" high, 40 1/4" wide. 200.00 - 300.00



October Fine Estates Auction 10/4/2015

LOT #**278 Inv#: 1050470 Pair Mid Century Walnut Cabinets**

Unique pair of mid century modern walnut wall cabinets, with fixed and movable shelved sections and tinted glass sliding glass doors, set on rectangular plinth leg bases, 1950-60. 60" wide, 61" high, 13" deep. In good condition. 1,000.00 - 1,500.00

**279 Inv#: 1050496 Glass & Chrome Modernist Round Table**

Two tier frosted glass and chrome round occasional table, with rectangular chrome legs. 22 1/4" high, 20 1/2" diameter. 150.00 - 200.00

**280 Inv#: 1050498 Edward Wormley Upholstered Club Chair/Ottoman**

Edward Wormley for Dunbar easy chair and matching ottoman, in possible original fabric and finish, with low slung, elegant and generous proportions with a back cushion that floats upon an architectural and angled exposed walnut base, together with matching original ottoman, circa 1950's. Chair: 33" high, 31" wide, 25 1/2" deep. Ottoman: 14" high, 25" wide, 21 3/4" deep. 200.00 - 300.00

**281 Inv#: 1648095 George Nelson Side Table**

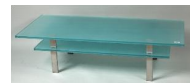
George Nelson side table with teak top and ebonized wood frame. 18 3/4" high, 24" wide, 17" deep. Condition: finish wear, loss, stains to top. 200.00 - 250.00

**282 Inv#: 1766026 David Hayes "Untitled" Steel Sculpture**

David Hayes (American, 1931-2013) steel sculpture, untitled, welded, enameled, signed and dated "D. Hayes 1979". 18" high, 14 1/2" wide. 400.00 - 600.00

**LOT #****283 Inv#: 1050501 Rectangular Glass & Chrome Modernist Coffee Table**

Two tier frosted glass and chrome rectangular coffee table, with rectangular chrome legs. 14 1/2" high, 24" wide, 54" long. Condition: one leg loose, slightly crooked. 200.00 - 300.00

**284 Inv#: 1777001 Mid-Century "Musical" Bar Fitted w/Speakers**

Mid-Century "Musical" bar fitted with speakers and shelves verso. 38 1/2" high, 96 1/2" wide, 18 1/2" deep. 400.00 - 600.00

**285 Inv#: 1777002 Mid-Century Modern Walnut Coffee Table**

Mid-century modern walnut coffee table. 15" high, 38" diameter. Condition: finish wear, loss, a few scratches to top. 100.00 - 200.00

**286 Inv#: 1788001 Art Deco Low Table, Etched Blue Glass Top**

Unusual Art Deco mahogany low table, with storage compartment and etched blue glass top. 16 1/2" high, 30 1/2" long, 17" deep. Condition: scuffs and dings consistent with age, light oxidation to edges of glass top. 200.00 - 250.00

**287 Inv#: 1050409 Pair Jack Lenor Larsen Side Chairs**

Pair of Jack Lenor Larsen side chairs with beige Naugahyde seats, one with original label on underside. 32" high, 19 3/4" wide, 16 1/2" deep. Condition: one with a couple scratches to left front leg. 200.00 - 300.00

**288 Inv#: 1050497 Edward Wormley Modern Stave Form Marble Top Table**

Edward Wormley for Dunbar sheaf of wheat occasional side table with stave form walnut base with travertine marble top, circa 1950's. 21" high, 21" wide. 200.00 - 300.00



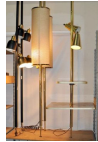
October Fine Estates Auction 10/4/2015

LOT #**289 Inv#: 1050484 Pair Finn Juhl Bench Form Sofas**

Fine pair of Finn Juhl designer sofas, settee form with turned and canted wooden legs, designed in the 1950s by Finn Juhl for France & Daverkosen of Denmark, circa 1950-60's. 32" high, 78" wide, 29" deep. Seat height 16". Provenance: NY Private Collection. 1,000.00 - 1,200.00

**290 Inv#: 1777003 Group Mid-Century Modern Tension Pole Lamps**

Group of five mid-century modern tension pole lamps, comprising a table tension lamp with two shelves, a pair of black conical shade pole lamps and a pair of brass pole lamps with drum form shades (one shade damaged). 87" high, 10" wide to 87" high, 23 1/2" wide. Condition: soiling. 200.00 - 300.00

**291 Inv#: 1384029 American School "Woman In Profile O/C**

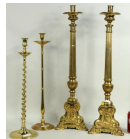
American School, 20th century, "Woman In Profile" oil on canvas, unsigned. Sight size: 59 1/2" high, 39" wide. Condition: crazing. 400.00 - 600.00

**292 Inv#: 1384031 American School "Harlequin and Ballerina" O/C**

American School, early 20th century, "Harlequin and Ballerina" oil on canvas, monogrammed indistinctly lower left. Sight size: 18 1/4" high, 11 3/4" wide. Frame size: 23 1/2" high, 17 1/4" wide. Condition: soiling, a few small areas of paint loss, small horizontal tear in hat, patch to back. 200.00 - 300.00

**293 Inv#: 1801008 Four Brass w/Two Baroque Style Altar Candlesticks**

Four brass candlesticks including a pair of altar candlesticks. 20 1/2" high, 6" wide to 26 1/2" high, 8" wide. Condition: finish wear, loss, one stem slightly bent. 200.00 - 300.00

**LOT #****294 Inv#: 1794008 Continental Neoclassical Mirrored Cabinet**

Continental neoclassical bird's eye maple and marble top mirrored cabinet. 36 1/2" wide, 74 1/2" high, 16 1/2" deep. Condition: damage to marble top, some looseness, general wear. 1,000.00 - 1,200.00

**295 Inv#: 1801017 Continental Carved Polychrome M/T Tabouret**

Continental neoclassical marble top tabouret, polychrome and carved giltwood quadriped base with foliate detail and paw feet. 23" high, 13 1/2" diameter. Condition: expected losses and wear. 300.00 - 400.00

**296 Inv#: 1801052 Baroque Chinoiserie Cabinet on Stand**

Baroque style carved Chinoiserie cabinet on stand, case with engraved brass hinges and lockplate, lower section with two drawers. 73" high, 41 1/2" wide, 18 3/4" deep. Condition: case with small areas of paint loss, a few chips. 300.00 - 400.00

**297 Inv#: 1072422 English Miniature Regency Glass Front Cabinet**

Miniature English Regency display cabinet with glass front. 19th century. 11" high, 6" wide, 3 1/2" deep. 100.00 - 200.00

**298 Inv#: 1072438 Venetian Style Octagonal Glass Mirror**

Venetian style mirror, the oval plate within an octagonal faceted glass frame, with cartouche surmount. 29" wide, 50" high. 400.00 - 500.00

**299 Inv#: 1801137 Pair Large Baroque Brass Pricket Sticks**

Pair of large Baroque brass pricket sticks now as lamps. 38 1/2" high, 9" wide. Condition: finish wear, loss, cracks, dents, one stem slightly bent. 300.00 - 400.00



October Fine Estates Auction 10/4/2015

LOT #**300 Inv#: 1800023 Early Brass Repousse Chamberstick & Star Sconce**

An early brass repousse chamberstick and star sconce. 2" high, 10" long to 8" high, 4 3/4" wide. 200.00 - 300.00

**301 Inv#: 1801065 Louis XV/XVI Mahogany and Ormolu Vitrine Cabinet**

Louis XV/XVI style mahogany and ormolu vitrine cabinet, diminutive size, lacking shelves. 64 1/2" high, 26 1/2" wide, 16 1/2" deep. 300.00 - 400.00

**302 Inv#: 1801059 Spanish Carved & Gilded Starburst Mirror**

Spanish carved and gilded starburst mirror. 35" diam. Condition: age cracks, silvering loss. 200.00 - 300.00

**303 Inv#: 1782004 Pair French Provincial Carved Bergeres**

Pair French Provincial carved bergeres having shell carved crest rails, acanthus carved hand grips on cabriole legs, backs upholstered in floral tapestry panels. 38 1/2" high, 27" wide, 21" deep. Condition: soiling, separations, repairs to tapestry, loss to braid, finish wear, loss, joint separations, age cracks, losses. 400.00 - 600.00

**304 Inv#: 1801029 Continental Brass Mounted Gueridon**

Continental brass mounted gueridon having circular top and baluster support in a hexagonal paw foot base. 28" high, 19" diameter top. 400.00 - 500.00

**305 Inv#: 1803001 Georgian Revival Mahogany/Parcel Ebonized Map Case**

Georgian Revival mahogany and parcel ebonized map chest with two banks of fall front drawers concealing trays. 43" high, 32" wide, 18" deep. Condition: expected use and age wear. 800.00 - 1,000.00

**LOT #****306 Inv#: 1801113 Two Pair Carved Wood Architectural Elements**

Two pair Continental carved wood figural architectural elements. 16 1/4" high, 2 1/2" wide to 25" high, 4" wide. Condition: finish wear, loss, large male figure with burn down left side. 200.00 - 300.00

**307 Inv#: 1782022 Pair English Staffordshire Style Spaniels**

Pair of English Staffordshire style spaniels, impressed on base "made in England". 8 1/2" high, 6 1/2" wide. 100.00 - 200.00

**308 Inv#: 1787003 Papier Mache Serpentine Decorated Tray/Stand**

A papier mache black and gilt decorated serpentine tray on a Chinese Chippendale custom base, marked "Price Glover, NY". 19 1/2" high, 32 1/4" wide, 25 1/2" deep. Condition: good with minor crazing and some gilt wear. 300.00 - 400.00

**309 Inv#: 1801114 Continental Carved Oak Architectural Fragment**

Continental carved oak figural architectural fragment. 41" high, 10" wide. Condition: age cracks, losses, missing fingers. 300.00 - 500.00

**310 Inv#: 1794006 Classical Brass Fitted Mahogany Drinks Cart**

Fine classical design brass and mahogany drinks cart. 36" long, 16 1/2" deep, 23" high. Condition: lacking wheels. 300.00 - 500.00

**311 Inv#: 1785040 Continental Mixed Woods Inlaid Secretaire**

Continental mixed woods inlaid secretaire a abattant, single drawer over drop front with bird and quiver inlay, two cupboard doors below on tapered legs. 57" high, 37 1/2" wide, 17" deep. Condition: age cracks, worm damage, top drawer originally with pulls, now plugged, small stains, small chips, losses. 400.00 - 500.00



October Fine Estates Auction 10/4/2015

LOT #**312 Inv#: 1785039 Two Small French Provincial Style Stands**

Two small French provincial style hardwood stands comprising a one drawer triangular stand on cabriole legs and a shaped bookstand with three open shelves. 28 3/4" high, 18" wide, 12 1/4" deep to 29" high, 19 1/4" wide, 8 3/4" deep. Condition: bookcase with small loss to top side edge, a couple protruding nails, stains to top. 300.00 - 400.00

**313 Inv#: 1782006 Louis XV Style Marquetry Inlaid Serpentine Chest**

Louis XV style marquetry inlaid two drawer chest with marble top. 33 1/2" high, 36 1/2" wide, 18 1/4" deep. Condition: edge chips to back of marble, small chips, losses, veneer losses to legs. 300.00 - 400.00

**314 Inv#: 1801062 Victorian Barley Twist Wooden Pedestal**

Interesting Victorian carved wooden pedestal with barley twist column. 38" high, 14" wide, 14" base. 200.00 - 250.00

**315 Inv#: 1801068 Two Continental Style Carved Caned Arm Chairs**

Two Continental carved caned seat arm chairs, comprising a Charles II style carved arm chair and a French provincial carved fruitwood carved arm chair. The larger: 52" high, 22" wide, 21" deep. The smaller: 38 1/2" high, 25" wide, 19" deep. 200.00 - 250.00

**316 Inv#: 1801138 Pair Continental Brass Pricket Sticks**

Pair Continental brass pricket sticks. 11 1/2" high, 4 1/2" diameter. 300.00 - 400.00

**LOT #****317 Inv#: 1801147 Louis XV Style Marble Top Serpentine Commode**

Louis XV style marble top serpentine commode, with floral marquetry and ormolu mounts. 32" high, 33 1/2" wide, 17" deep. Condition: veneer losses. 500.00 - 700.00

**318 Inv#: 1801155 Set Four Late Regency Carved Side Chairs**

Four late Regency carved mahogany side chairs. 35 3/4" high, 18" wide, 19 1/4" deep. Condition: expected age and use wear. 200.00 - 250.00

**319 Inv#: 1801169 Jacobean Style Carved Barley Twist Bench**

Jacobean style barley twist carved bench. 29" high, 46" wide, 17" deep. Condition: as found, in the rough. 200.00 - 300.00

**320 Inv#: 1801157 Maitland-Smith Leather Clad Game Table**

Regency style leather clad mahogany game table with inset game board and sliding checker board, labeled Maitland-Smith. 29 1/4" high, 28" wide, 17" deep. Condition: wear, losses. 100.00 - 150.00

**321 Inv#: 1801156 Pair Louis XVI Style Fautuils**

Pair Louis XVI style upholstered open armchairs, covered in faux leopard. 38" high, 22 1/2" wide, 22" deep. Condition: wear, losses, loose joints. 200.00 - 250.00

**322 Inv#: 1782007 Louis XV Style Marquetry Inlaid Two Drawer Stand**

Louis XV style marquetry inlaid two drawer stand with marble top. 28 1/2" high, 13 1/2" wide, 11 1/2" deep. Condition: losses, repairs to marble, edge nicks to legs. 200.00 - 300.00



October Fine Estates Auction 10/4/2015

LOT #**323 Inv#: 1794007 French Provincial Walnut Armoire**

French provincial walnut armoire, 58" wide, 25" deep, 79" high. Reassembled and lacking some elements, some restorations, sold as is. 500.00 - 700.00

**324 Inv#: 1785034 Louis XV Style Gilt Bronze Dressing Mirror**

Louis XV style gilt bronze dressing mirror, with beveled glass, monogrammed. 22 1/2" high, 16 1/2" wide. Condition: gilt wear, oxidation, loss. 200.00 - 250.00

**325 Inv#: 1785037 Parquetry Louis XVI Style Lingerie Chest**

Parquetry Louis XVI style inlaid mixed woods five drawer lingerie chest with marble top. 40 3/4" high, 17 3/4" wide, 13 1/4" deep. Condition: veneer loss, age crack to side, right leg lacking metal mount. 300.00 - 400.00

**326 Inv#: 1801139 Group Three Stands, MOP, Asian, Moorish**

Group of three small stands, comprising a mother of pearl lacquer Asian style stand, a marquetry Moorish hexagonal stand, and a carved Chinese marble top stand. 16" high, 18" wide, 19 1/2" deep to 21" high, 16" diameter. 300.00 - 400.00

**327 Inv#: 1801158 Two Antique Classical Arm Chairs**

Two antique classical arm chairs, one an American maple scrolled arm chair, the other likely Continental walnut high back easy chair. 41 1/4" high 22 3/4" wide, 20 1/2" deep and 37 1/4" high, 24" wide, 19 1/2" deep. Condition: loose joints, wear, repairs. 300.00 - 400.00

**LOT #****328 Inv#: 1801152 English Mahogany M/T Fluted Design Pot Table**

Late Regency carved mahogany pot table with inset marble top. 28 1/2" high, 17" diameter. 200.00 - 400.00

**329 Inv#: 1801149 Georgian Mahogany Chiming Bracket Clock**

Georgian mahogany chiming bracket clock with brass mounts, silvered dial. 21 1/2" high, 13 1/4" wide. Condition: repairs to top, finish wear to dial, a couple small losses at top, not running. 300.00 - 400.00

**330 Inv#: 1072400 Unusual Pair Regency Mahogany Fire Screens**

Rare pair of Regency carved mahogany fire screens, with movable central panel, raised on carved and molded scrolled legs. 19th century. 36" high, 26" wide. Condition: non-matching upholstery, some turned bosses missing, expected age and use wear. 600.00 - 800.00

**331 Inv#: 1726030 Regency Inlaid/Banded Mahogany Tea Caddy**

Regency inlaid and banded mahogany tea caddy, interior with three compartments. 4 1/2" high, 9" wide. Condition: finish wear, loss, losses, one piece loose moulding. 200.00 - 300.00

**332 Inv#: 1422045 English Country Elmwood Dresser Base**

English country oak or elm dresser base, with three short over two small drawers, and shaped apron. 31 1/2" high, 64" wide, 17" deep. Condition: feet tipped, constructed of old and new elements. 500.00 - 700.00



October Fine Estates Auction 10/4/2015

LOT #**333 Inv#: 1801067 Regency Inlaid Mahogany Breakfront Side Cabinet**

Regency inlaid mahogany and brass mounted breakfront side cabinet, in the Egyptian revival taste, with mirrored doors flanked by open shelved compartments. 19th century with alterations. 36 1/2" high, 95" wide, 15" deep. 2,000.00 - 3,000.00

**334 Inv#: 1794001 French Trestle Base Refectory Dining Table**

French trestle base refectory style dining table 29" high, 35 1/2" wide, 9' 3" long. Condition: stains, scratches, filled area to top. 1,500.00 - 1,800.00

**335 Inv#: 1803005 Large Rococo Style Gilt Mirror**

Large Rococo style gilt mirror, wide carved foliate frame and surmount of flower blossoms. 50" high, 31 1/2" wide. 200.00 - 300.00

**336 Inv#: 1803002 Neoclassical Style Demilune Console**

Neoclassical style demilune console table, mahogany with carved frieze and galleried lower shelf. 31 1/2" high, 33" wide, 15 1/2" deep. 300.00 - 500.00

**337 Inv#: 1641007 Regency Period Inlaid Mahogany Sofa Table**

English regency period drop leaf mahogany sofa table with rosewood crossbanded detail on top and a sabre legged base with casters. 28 1/2" high, 36 3/4" wide (closed), 59" wide (open), 26" deep. Condition: breaks, losses to veneers and inlays. 600.00 - 900.00

**338 Inv#: 1800055 Pair Continental Silvered Bronze Candlesticks**

Pair of Continental swirl form silvered bronze candlesticks with engraved decoration. 9 1/2" high, 5" diameter. Condition: finish wear, loss. 300.00 - 400.00

**LOT #****339 Inv#: 1794002 Set Ten French Baroque Style Uph Dining Chairs**

Set of ten French baroque style needlepoint upholstered dining chairs. 43" high, 20 1/2" wide, 18" deep. 2,000.00 - 2,500.00

**340 Inv#: 1801055 Near Pair Rococo Giltwood Brackets**

Two carved and gesso giltwood wall brackets, similar in design. 12" tall, 14" tall. Condition: wear, breaks, repairs. 200.00 - 250.00

**341 Inv#: 1765001 George II Mahogany Arch Top Secretary**

George II mahogany arch top secretary, top with broken arch over two paneled cupboard doors, three adjustable interior shelves over slant front drop down desk surface with central locking door flanked by cubbies and drawers, three graduated drawers below on bracket base. 97" high, 43" wide, 23 1/2" deep. Open: 38" deep. Condition: use wear, finish wear, loss, scratches, marring, stains to desk surface, repairs, chips, losses, age cracks. 2,000.00 - 2,500.00

**342 Inv#: 1797002 Georgian Style Carved Mahogany Stool**

Georgian style carved mahogany stool, with slip seat and shell carved knees. 16" high, 20" wide, 16" deep. Collection of Judy & Stanley Lewis, Pawling, NY. Condition: old repairs. 200.00 - 300.00

**343 Inv#: 1794003 French Provincial Style Painted Buffet**

French Provincial style paint and faux marble decorated two-part buffet 7' 9" high, 8' 2" wide, 21 1/4" deep. Condition: paint wear, loss, scratches. 1,000.00 - 1,500.00



October Fine Estates Auction 10/4/2015

LOT #**344 Inv#: 1800004 Night Stand & Small English Stand**

A George III mahogany night stand and an American country one drawer table with shelf. Stand: 31" high, 15" wide, 12" deep. Table: 23" high, 18" wide, 17" deep. 100.00 - 200.00

**345 Inv#: 1794004 Continental Baroque Style Carved Settee**

Continental baroque style carved settee/loveseat, 4' 7" wide, 3' 10" high, 22" deep. Condition: age cracks, repairs. 800.00 - 1,200.00

**346 Inv#: 1785033 Jacobean Carved Oak Bench**

Jacobean oak bench on reeded, carved and turned legs with stretchers, later lower board for shelf. 22 1/4" high, 42" long, 11 1/4" deep. Condition: wear, stains, chips, losses. 100.00 - 200.00

**347 Inv#: 1794005 Pair French Provincial Upholstered Bergere Chairs**

Pair of French baroque style carved walnut and oak upholstered open arm chairs. 48" high, 26" deep, 24" wide; seat height 18". Good condition, some restorations to back legs. 800.00 - 1,200.00

**348 Inv#: 1736120 Hand Blown Glass & Brass Ceiling Fixture**

Hand blown glass and brass ceiling fixture with smoke bell. Approximately 20" high, 9 1/2" diameter. Condition: edge chips. 200.00 - 300.00

**349 Inv#: 1801004 Queen Anne Style Mahogany Stool**

Queen Anne style carved mahogany footstool. 20th century. 16" high, 20" wide, 16 1/4" deep. 100.00 - 150.00

**LOT #****350 Inv#: 1801013 Group Three Brass Candlesticks, 20th C.**

Three brass candlesticks, 20th century 13 1/2" high, 6" wide to 33 3/4" high, 5 3/4" wide. Condition: oxidation. 100.00 - 200.00

**351 Inv#: 1785036 Three Small Pieces Furniture**

Three small pieces of furniture comprising an oval tilt-top table with eagle inlay, side chair and dropleaf table. 34 1/2" high, 18" wide, 16 1/2" deep to 29 1/2" high, 32" wide, 16" deep. Open: 34" deep. Condition: finish wear, chair with partially detached stretcher, edge nicks. 200.00 - 300.00

**352 Inv#: 1801011 American Classical Gilded Architectural Mirror**

American classical carved and gilded architectural mirror, with acorn drops and applied classical motifs, upper and lower glass. 59" high, 41 1/2" wide. Condition: Some gilt loss and flaking, good antique condition. 300.00 - 400.00

**353 Inv#: 1800013 American Country Pine Blanket Chest**

American country pine blanket chest with later wrought iron handles. 17" high, 44" wide, 17" deep. Condition: finish wear, loss, stains, chips, losses. 100.00 - 200.00

**354 Inv#: 1800054 Five Textiles Including Small Grenfell Mat**

Five textiles including a small Grenfell mat. 17 1/2" high, 8 1/2" wide to 76" high, 75" wide. Condition: wear, stains, holes, losses, repairs. 80.00 - 100.00



October Fine Estates Auction 10/4/2015

LOT #**355 Inv#: 1792002 Large Victorian Mourning Hair Wreath, Framed**

Large Victorian mourning hair wreath framed in oval shadowbox. Framed, not examined out of frame. Sight size: 24 1/4" high, 20" wide. Frame size: 28 1/2" high, 24 1/2" wide. Condition: punch to paper backing. 200.00 - 300.00

**356 Inv#: 1801047 Pair Boston Classical Side Chairs**

Pair Boston classical carved mahogany side chairs, 19th century. 32" high, 17 1/2" wide, 16" deep. Condition: looseness, wear, loss to one front leg joint. 100.00 - 150.00

**357 Inv#: 1736118 Pair Gothic Style Carved Oak Side Chairs**

Pair Gothic style carved oak side chairs. 47" high, 17 3/4" wide, 16" deep. Condition: finish wear, one with loose joints, seat stain, one with small chip on upper leafage. 100.00 - 200.00

**358 Inv#: 1801045 NY Sheraton Carved Mahogany Pembroke Table**

New York Sheraton carved mahogany Pembroke table, the falling leaves with canted corners, on reeded tapering legs with single frieze drawer. 28 1/2" high, 23" wide (closed), 44" wide (open), 36" deep. 500.00 - 700.00

**359 Inv#: 1173111 Sheraton Cream Painted One Drawer Stand**

Sheraton cream painted one drawer washstand with faux bamboo detail. 37 1/2" high, 37 3/4" wide, 21" deep. Condition: age cracks, stains, paint wear, loss, right top side repaired. 100.00 - 200.00

**LOT #****360 Inv#: 1801053 NY Classical Carved Mahogany Pier Table**

American classical carved mahogany pier table, with grain painted later wooden top, 19th century. 35" high, 41 1/2" wide, 19 1/2" deep. Condition: wear, veneer chips, later top. 700.00 - 900.00

**361 Inv#: 1801022 Group Eight Antique Square Base Brass Candlesticks**

Group eight antique square base brass candlesticks, some pairs. 6" high, 3" wide to 6 1/4" high, 3 1/2" wide. Condition: dents, repairs. 100.00 - 200.00

**362 Inv#: 1797006 Pair Yellow Painted Turned Wood Lamps**

Pair of yellow painted turned wood table lamps, candlestick form, parcel ebonized. 31" high. Collection of Judy & Stanley Lewis, Pawling, NY. 100.00 - 200.00

**363 Inv#: 1801031 Two American Classical Arm Chairs**

Two American classical arm chairs, one a rosewood grained scrolling cane seat rocking chair, the other a carved mahogany tub chair, both 19th century. Rocker: 41" high, 22 1/2" wide, 34" deep. Tub chair: 56" high, 22 1/2" wide, 27" deep. 200.00 - 300.00

**364 Inv#: 1072401 Diminutive Brass/Wire Fireplace Fender**

Rare period small brass and woven wire footed fireplace fender. 26" long, 9 1/2" high, 9 1/2" deep. 100.00 - 150.00

**365 Inv#: 1801151 Group Six Brass Candlesticks**

Group of six brass candlesticks, comprising two near pair of antique candlesticks and a pair of modern round base sticks. 6" high to 9 1/2" high. 100.00 - 150.00



October Fine Estates Auction 10/4/2015

LOT #**366 Inv#: 1801054 Large American Classical Gilt Architectural Mirror**

Very large American Classical carved, gesso and gilt architectural mirror, probably Philadelphia or New York, circa 1820. 59" high, 42" wide. Condition: gesso oxidation, losses, cracks, losses to cornice, missing backboard. 800.00 - 900.00

**367 Inv#: 1794011 Early American Portrait "Mr. Scott" O/B**

Early American portrait "Mr. Scott" oil on board, unsigned with original receipt from the Rathbun Gallery, Wakefield, RI and a brief history of the sitter. The board with unfinished work verso. Sight size: 10 3/4" high, 8 1/2" wide. Frame size: 16 1/2" high, 14 1/2" wide. 500.00 - 700.00

**368 Inv#: 1072380 NJ Tall Clock, Silas W. Howell, New Brunswick**

Federal cherry wood tall case clock, with swan neck pediment and tombstone glass door flanked by reeded columns, above a case with arched molded door flanked by fluted quarter columns, above a rectangular base with shaped base with bracket feet; the enameled dial with calendar wheel and floral spandrels, inscribed "Silas W. Howell, New Brunswick, NJ"; 30 hour brass movement. New Jersey, circa 1795-1800. 94" high, 19" wide, 11" deep. Condition: old finish with some checking, minor losses, repairs to dial. 1,800.00 - 2,200.00

**369 Inv#: 1785038 Queen Anne Veneered Mahogany Side Table**

Queen Anne veneered mahogany one drawer lowboy or side table. 28 1/2" high, 31 3/8" wide, 19 7/8" deep. Condition: finish wear, loss. veneer loss, buckling, age cracks. 300.00 - 400.00

**LOT #****370 Inv#: 1801132 Classical Marble Top Pier Table, Possibly Meeks**

Classical mahogany marble top pier table, possibly Meeks, having scrolled supports and feet, with shaped lower shelf. 35" high, 37" wide, 18" deep. Condition: as found, needing restoration, some veneer losses. 900.00 - 1,200.00

**371 Inv#: 1072393 American Hepplewhite Inlaid Mahogany Card Table**

Hepplewhite inlaid mahogany "D" shaped card table, probably Philadelphia, circa 1790-1800. 36" wide, 17 1/2" deep, 29 1/2" high. 400.00 - 500.00

**372 Inv#: 1800011 Five New England Splint Baskets**

Five New England splint baskets. 2 1/2" high, 3 1/2" wide to 10 1/2" high, 25 1/2" wide. Condition: stains, breaks, losses. 150.00 - 200.00

**373 Inv#: 1801207 Pierced Carved Walnut Wall Bracket**

Interesting pierced carved single walnut wall bracket. 18" high, 16" wide, 10" deep. 150.00 - 250.00

**374 Inv#: 1800012 Large Painted Bentwood Box w/Castle & Dragons**

Large painted bentwood box, the top with castle, dragons, "Vivat Bavaria". 8 3/4" high, 14 3/4" diameter. Condition: soiling, edge wear, small losses. 300.00 - 400.00

**375 Inv#: 1800014 Five Small Early Household Items**

Five small early household items comprising two mirrors, two footstools and bed warmer. 8 1/4" high, 5 3/4" to 6 3/4" high, 12" long. Condition: paint, gilt, silvering loss, chips, bends to metal. 100.00 - 200.00



October Fine Estates Auction 10/4/2015

LOT #**376 Inv#: 1800018 Group Five Early Tole & Tin Lighting Items**

Group of five early tole and tin lighting items. 5 1/2" high, 4" wide to 16" high, 6 1/2" wide. Condition: wear, rust, crazing, a couple small breaks. 200.00 - 300.00

**377 Inv#: 1800031 Six Redware Items**

Six Redware items including two cake molds. 3" high, 6 1/4" diameter to 8" high, 5 1/2" wide. Condition: crazing, enamel, glaze wear, loss, chips, losses. 100.00 - 200.00

**378 Inv#: 1803003 Empire Mahogany Side Table**

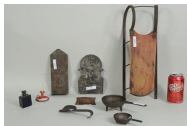
Empire mahogany side table, having flame mahogany veneers and scrolled supports and center stretcher. 29" high, 39 1/2" wide, 18" deep. 200.00 - 300.00

**379 Inv#: 1800016 Group Six Wooden Items**

Group of six wooden items including an apothecary sign, rumlet and other items. 5" high, 5" wide to 18" high, 14 1/2" wide. Condition: paint wear, loss, dings. 100.00 - 200.00

**380 Inv#: 1800034 Group Nine American Country Miniatures**

Group of nine American miniature and small country items including a sled, lantern, candlestick and other items. 1 1/2" high, 2 1/4" diameter to 5 1/2" high, 15 1/2" long. Condition: wear, rust, stains, losses. 200.00 - 300.00

**381 Inv#: 1797001 Federal Inlaid Mahogany Tall Clock**

Fine Federal inlaid mahogany tall clock, with star inlaid tympanum and initials "J-C-D" inlaid in scrolls. Provenance: Sotheby's Lot 645, Sale #7253, January 17, 1998, sold for \$18,400. Collection of Judy & Stanley Lewis, Pawling, NY. 91 1/2" high, 19 1/2" wide, 9 1/2" deep. 2,000.00 - 3,000.00

**LOT #****382 Inv#: 1801179 American Classical Carved Center Table, Quervelle**

American classical carved mahogany center table, manner of Quervelle, with gadrooned edge, column shaft with faceted base, and tripod base with acanthus and paw feet. 29" high, 36" diameter. Condition: considerable cracking to veneers, one foot with old repair. 600.00 - 900.00

**383 Inv#: 1801170 American Federal Gilded Architectural Mirror**

Large American Federal gilded architectural mirror, with diamond pattern upper panel with legend verso "Tablet No. 6". 44" high, 29 1/2" wide. Condition: substantial oxidation, good antique condition with some gilt losses and chips. 300.00 - 500.00

**384 Inv#: 1801178 Terry & Andrews Empire Ogee Mantle Clock**

Terry and Andrews, Bristol, CT. Mahogany ogee shelf clock, with floral eglomise panel, the dial signed indistinctly. 25 3/4" high, 15 1/4" wide, 4" deep. Condition: small area of veneer loss, wear to panel and dial. 200.00 - 300.00

**385 Inv#: 1797003 Federal Octagonal Top Candlestand**

Federal octagonal top candlestand, with baluster standard in a spider leg base; old surface. 28" high, top 18" wide, 14" deep. Collection of Judy & Stanley Lewis, Pawling, NY. 200.00 - 300.00

**386 Inv#: 1801153 Boston Classical Carved Mahogany Sofa**

American classical carved mahogany sofa, with scrolled and veneered crest, rolled arms and carved turned feet. 37" high, 83" long, 25" deep. 1,200.00 - 1,800.00



October Fine Estates Auction 10/4/2015

LOT #**387 Inv#: 1801171 Pair Classical Native American Figural Lustres**

Pair of classical Native American figural lustres, gilt brass on marble bases. 14 1/4" high, 5 3/4" wide. Condition: chips to marble, missing prisms, one stem slightly bent. 200.00 - 300.00

**388 Inv#: 1801180 Federal Revival Birdseye Maple Mirror**

Unusual Victorian birdseye maple mirror in Federal revival style. 33" high, 15" wide. 100.00 - 150.00

**389 Inv#: 1787001 New England Queen Anne Walnut Wing Chair**

New England Queen Anne walnut wing chair, upholstered in crewel work, with block and turned stretchers and cabriole front legs ending in pad feet. 47 1/4" high, 44 1/2" wide, 20" deep. Condition: a few small upholstery stains, a few pulled threads, edge wear and chips to feet. 2,000.00 - 3,000.00

**390 Inv#: 1801184 R&J.B. Terry Bristol CT Triple Decker Shelf Clock**

R & J.B. Terry, Bristol, CT triple decker shelf clock, eight day movement, mahogany with old surface, original paper label intact, door detached. 34 1/2" high, 20" wide, 7" high. 300.00 - 400.00

**391 Inv#: 1797004 Fine Sheraton Carved & Inlaid Mahogany Sofa**

Fine Sheraton carved and inlaid mahogany sofa, having reeded detail throughout and inlaid panels. New England, early 19th century. 35 1/2" high, 75" wide, 25" deep. Collection of Judy & Stanley Lewis, Pawling, NY. 1,200.00 - 1,500.00

**LOT #****392 Inv#: 1787002 Seth Thomas Pillar & Scroll Mantle Clock**

Seth Thomas (labeled) pillar and scroll mantel clock with eglomise panel. 29" high, 17 1/2" wide, 7" deep. Condition: some paint loss to glass, crazing to dial, small chips and losses, and repairs to left crest and left rear foot. 400.00 - 600.00

**393 Inv#: 1072437 American Hepplewhite Bellflower Inlaid Sideboard**

American Hepplewhite inlaid mahogany serpentine front sideboard with bellflower and other inlays. Probably Salem, Mass., early 19th century. School of Edmund Johnson. 41 1/2" high, 80 1/2" long, 26" deep. Condition: inlay and veneer repairs, losses, expected age and usage wear, loss to right front corner of top. 1,500.00 - 2,000.00

**394 Inv#: 1801144 Boston Classical Mahogany Sofa Table**

American classical mahogany drop leaf sofa table, drawer at each end. 28" high, 21" wide (closed), 45" wide (open), 36" deep. 300.00 - 500.00

**395 Inv#: 1797005 Federal Red Painted Oval Top Candlestand**

Federal red painted oval top candlestand, with tilting top on a vase and column standard spade foot tripod base. 27 1/2" high, 22" wide, 15" deep. Collection of Judy & Stanley Lewis, Pawling, NY. 200.00 - 300.00

**396 Inv#: 1800040 Six Early Wrought Iron & Wood Lighting Devices**

Group of six early wrought iron and wood lighting devices. 4" high, 5 1/2" wide to 11" high, 5" wide. Condition: wear, rust, bends, worm damage, small breaks. 200.00 - 300.00



October Fine Estates Auction 10/4/2015

LOT #**397 Inv#: 1808001 Black Swan Decoy Attributed to Richard Connolly**

Black swan decoy attributed to Richard Connolly, partial illegible ink signature on base. Provenance: formerly in the collection of Countess Tauni de Lesseps, French born American artist and socialite. 15" high, 8" wide, 21 1/2" long. Condition: paint wear, loss, body with burned areas, possibly original to carving. 200.00 - 400.00

**398 Inv#: 1800049 Group Seven Theorem Paintings & Prints**

Seven Theorem paintings and prints. Framed, not examined out of frames. Sight size: 2 1/8" high, 1 1/2" wide to 14 1/4" high, 11 1/4" wide. Frame size: 3 3/4" high, 3 1/4" wide to 18 1/2" high, 15 1/2" wide. Condition: toning, stains. 100.00 - 200.00

**399 Inv#: 1400008 American Chippendale Walnut Tall Clock**

American Chippendale walnut tall clock, bonnet with broken star inlaid arch top over arched case, hand painted floral and gilt dial, arched door below on square corner column base. 87" high, 17" wide, 11" deep. Condition: no weights, no key, finish wear, loss, age cracks, dial with paint loss, scuffs to left side of case below bonnet. 1,200.00 - 1,800.00

**400 Inv#: 1726028 Framed Silk Trapunto Embroidery "E Pluribus Unum"**

Framed silk trapunto embroidery "E Pluribus Unum". Framed, not examined out of frame. Sight size: 18 1/2" high, 20 1/2" wide. Frame size: 22 1/2" high, 24 1/2" wide. Condition: stains, fabric tear upper left. 200.00 - 300.00

**LOT #****401 Inv#: 1050394 Chippendale Style Gilt & Mahogany Mirror**

Chippendale style gilt and mahogany mirror with gilt carved Phoenix crest. 52" high, 23 1/2" wide. Condition: break to gilt scrollwork upper right, repaired break to mahogany scrollwork lower right. 200.00 - 300.00

**402 Inv#: 1736116 Queen Anne Style Wing Chair**

Queen Anne style wing chair upholstered in brown wool. 43 3/4" high, 33 1/2" wide, 20 1/2" deep. Condition: light scuffs to legs. 100.00 - 200.00

**403 Inv#: 1400009 Connecticut Empire Mahogany Mantle Clock**

Connecticut Empire mahogany mantle clock with hand painted and gilt dial, reverse painted and stenciled glass panel below, partial label in interior. 36 1/2" high, 17 3/4" wide, 4 3/4" deep. Condition: a few chips, losses, cracks, paint loss to glass panel. 300.00 - 400.00

**404 Inv#: 1801027 Pair Renaissance Revival Side Chairs**

Pair of Renaissance revival side chairs in the manner of John Jelliff. Carved, parcel gilt and with incised detail. 37 1/2" high, 22" wide, 12" deep. 800.00 - 1,200.00

**405 Inv#: 1800046 Two Early Hand Painted Wood Commercial Signs**

Two early hand painted wood commercial signs. 11 1/4" high, 16 1/4" wide to 12 3/4" high, 20 3/4" wide. Condition: soiling, toning, crazing, holes, paint losses. 100.00 - 200.00

**406 Inv#: 1790001 Elisha Hotchkiss Federal Mantle Clock**

Elisha Hotchkiss mantle clock, Burlington, CT. Shaped arch over florally painted dial, reverse painted scene of lady with wheat below, original label in interior. 31 3/4" high, 17" wide, 5" deep. Condition: a few edge chips, veneer cracks, repaint, restoration, paint wear to dial, restoration to reverse glass panel. 300.00 -



October Fine Estates Auction 10/4/2015

LOT #

500.00

407 Inv#: 1317057 American Mixed Woods Corner Cabinet

American mixed woods corner cabinet with scrolled cornice over arched mullioned door, painted blue interior with four shelves, two paneled cupboard doors below with two interior shelves over single drawer, 19th century. 98" high, 39 1/2" wide, 27" deep. Condition: finish wear, lower drawer a later addition, losses to arched door at top, age cracks, frame nicks, a couple chips. 400.00 - 600.00

**408 Inv#: 1800053 Two Hooked Rugs & Rag Rug**

Two hooked rugs and a rag rug, house rug mounted on board. 42" high, 17" wide to 39" high, 21" wide. Condition: a few pulls, stains to house rug. 100.00 - 200.00

**409 Inv#: 1797007 American Queen Anne Round Maple Top Tea Table**

American Queen Anne maple tea table, circular top tilting on a vase and column standard, tripod base ending in pad feet. Old repairs. 28" high, 34" diameter. Collection of Judy & Stanley Lewis, Pawling, NY. 600.00 - 800.00

**410 Inv#: 1801205 Near Pair Classical Mahogany Architectural Mirrors**

Near pair American classical mahogany architectural mirrors with brass mounts and rope twist applied columns. 51" high, 27" wide and 49" high, 25" wide. Condition: missing moldings, finish wear and damage, as found condition. 200.00 - 300.00

**411 Inv#: 1800001 Early Victorian American Ladies Writing Desk**

Early Victorian ladies writing desk, oilcloth top above two drawers on each side, turned legs with casters. 29" high, 48" wide, 25 1/2" deep. 200.00 - 300.00

**LOT #****412 Inv#: 1800002 Group Four Antique American Chairs**

Group of four antique American country chairs, comprising two rockers, a Windsor side chair and a bannister back arm chair. Various sizes, the largest 36" high, 20" wide, 30" deep. The smallest 35" high, 13" wide, 21 1/2" deep. 100.00 - 200.00

**413 Inv#: 1800003 Pair Country Pine Hanging Shelves**

Pair unusual country pine three shelf hanging shelf units, probably American, late 19th century. 21" high, 22" wide, 7" deep. 100.00 - 200.00

**414 Inv#: 1800005 Small Chimney Cupboard & Stepback Cupboard**

Two American country cupboards, comprising a small primitive chimney cupboard and a painted open shelf wall cupboard. Chimney: 45" high, 21 1/2" wide, 16" deep. Stepback: 50" high, 42" wide, 10" deep. Condition: wear, losses, missing parts. 300.00 - 400.00

**415 Inv#: 1800006 Federal Red Painted Field/Canopy Bed w/Canopy**

American Federal red painted pencil post field bed with canopy and original rails. Approximately 46 1/4" wide, 70 1/4" long. 400.00 - 500.00

**416 Inv#: 1801005 Pair Boston Lemon Top Brass Andirons**

Pair period brass andirons with faceted lemon tops, Boston 19th C. 17" high, 10" wide, 16 1/2" deep. Condition: oxidation, bends to log rests. 150.00 - 200.00



October Fine Estates Auction 10/4/2015

LOT #

- 417 Inv#: 1400014 Chippendale Style Scrollwork Mirror**
Chippendale style scrollwork mirror. 39 1/2" high, 20 1/2" wide. Condition: age crack lower left. 80.00 - 100.00



- 418 Inv#: 1800008 Spiral Candlestand & Stool**
An early screw form two light candlestand and a small hexagonal country stool. Stand 37" high, 10" wide, 6" deep. Stool 17" high, 17 1/2" wide, 15" deep. 200.00 - 250.00



- 419 Inv#: 1801117 Pair Chinese Style Cast Stone Fu Lions**
Pair Chinese style cast stone fu lions. 20" high, 17" wide. Condition: break, loss to one leg, stains from exposure to the elements. 200.00 - 300.00



- 420 Inv#: 1801115 Group Six Cast Iron Garden Urns**
Group of six cast iron garden urns. 17" high, 13" wide. Condition: rust, wear from exposure to elements. 500.00 - 600.00



- 421 Inv#: 1801049 Walker "Woman with Mirror" O/C**
Walker, 20th century, "Woman with Mirror" oil on canvas, signed, dated lower left, Walker 1936. Sight size: 19" high, 14 1/2" wide. Frame size: 26 1/2" high, 22" wide. Condition: two small brown spots to left of shadow's shoulder. 200.00 - 300.00



- 422 Inv#: 1757002 Laurence Biddle, Two Still Life Paintings/Panel**

Laurence Biddle (English, 1888-1968) two still life paintings "No. 6 Pansy, Wallflower and Forget-Me-Nots", "No. 9 Little Flower Piece" oil on panels, both signed lower left and right Lawrence Biddle, one dated '33. Framed, not examined out of frames. Sight size: 6 1/2" high, 11" wide. Frame size: 13 1/2" high, 18 1/2" wide. In original silver leaf art deco frames. 1,000.00 - 1,200.00

**LOT #**

- 423 Inv#: 1801060 Alice Lingow Burgess "Seascape" O/B**
Alice Lingow Burgess (CT, b. 1880), "Seascape" oil on board signed lower right "A. Lingow Burgess". Sight size: 6 3/4" high, 8 3/4" wide. Frame size: 12" high, 13 1/2" wide. Condition: soiling, small losses. 200.00 - 300.00



- 424 Inv#: 1801172 F. Fuchs Small O/C Painting of Rabbi**
Feodor Fuchs (Austrian, 19th century) small oil on canvas of rabbi, signed upper right "F. Fuchs". Sight size: 8" high, 6" wide. Frame size: 12 1/2" high, 10 1/2" wide. 150.00 - 200.00



- 425 Inv#: 1712012 Japanese Tourist Bureau "Japan" Lithograph Poster**

"Japan" travel poster for the Japan Tourist Bureau, lithograph. Framed, not examined out of frame. Sight size: 34 3/8" high, 22 3/4" wide. Frame size: 42" high, 30 1/8" wide. Condition: creases, losses. 800.00 - 1,200.00



- 426 Inv#: 1800047 Pair English Watercolors**
Pair of English watercolors, unsigned. Framed, not examined out of frames. Sight size: approximately 10" high, 12 1/2" wide. Condition: toning, small losses. 200.00 - 300.00



- 427 Inv#: 1801175 Wallace Nutting "Cathedral Brook" Photograph**

Wallace Nutting (American, 1861-1941) "Cathedral Brook" photograph, signed lower right "Wallace Nutting", original label verso "inventory #G3094". Framed, not examined out of frame. Sight size: 18 3/4" high, 14 3/4" wide. Frame size: 22" high, 14 3/4" wide. 80.00 - 100.00



October Fine Estates Auction 10/4/2015

LOT #**428 Inv#: 1793004 C. Bernard, Watercolor City Scene, Lewiston ME**

Charles J. Bernard, 20th C, "Lewiston Supply Co., Maine" watercolor, signed lower right "Charles J. Bernard". Framed, not examined out of frame. Sight size: 13 7/8" high, 18 3/8" wide. Frame size: 28" high, 31 1/4" wide. Condition: toning, small light spots in sky on left. 100.00 - 150.00

**429 Inv#: 1801030 Charles Dahlgreen "Navy Ship at Sea" O/C**

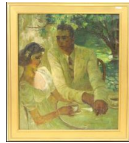
Charles William Dahlgreen (American, 1864-1955), "Navy Ship at Sea" oil on canvas, signed lower left "Chas Dahlgreen". Sight size: 22 1/2" high, 39" wide. Frame size: 30 1/2" high, 47" wide. Condition: a couple small spots upper right corner. 3,000.00 - 4,000.00

**430 Inv#: 1766027 Joseph Meert "EE Davis Cash Coal"**

Joseph Meert (Belgian/American, 1905-1985) "EE Davis Cash Coal" egg tempera on masonite, signed lower right "Meert". Sight size: 12" high, 16" wide. Frame size: 26" high, 29" wide. Provenance: ex collection Thomas Hart Benton. Sold at Anron Galleries, Chicago Illinois, gallery label verso. Page 17 of the catalog, inventory #18 "The Work of Our Friends". The collection of Thomas Hart Benton and Rita Piacenzo Benton. 6,000.00 - 8,000.00

**431 Inv#: 1801199 Isabel Jamison Neel Double Portrait, O/C**

Isabel Jamison Neel (American, 20th century), fine double portrait of a young couple outdoors, signed verso and with Grand Central School of Art label. Sight size: 33 1/2" high, 29 1/2" wide. Frame size: 40 1/2" high, 36" wide. 400.00 - 500.00

**LOT #****432 Inv#: 1384023 Cesar A. Villacres "Arc Du Carousel" O/C**

Cesar A. Villacres (Equador 1880-1941), "Arc Du Carousel" oil on canvas, signed lower right "Villacres". Sight size: 10 1/4" high, 12 1/2" wide. Frame size: 17" high, 19" wide. 700.00 - 900.00

**433 Inv#: 1384022 Abe Birnbaum "Hat Shop" Gouache**

Abe Birnbaum (New York, 1899-1966), "Milliners Shop" gouache on paper, signed lower right "A. Birnbaum". Framed, not examined out of frame. Sight size: 12" high, 20 3/4" wide. Frame size: 20" high, 29 1/2" wide. Condition: wavy paper, areas of flaking paint in pink ground. 500.00 - 600.00

**434 Inv#: 1795002 W.R. Wheeler New England Seascape, Signed**

William Ruthven Wheeler (Am. 1932-1894), "New England Seascape", oil on canvas, signed, dated lower left WRW, 81. Gallery label verso: "From T.F. Burke's Art Gallery, 167 Asylum St., Hartford CT". Sight size: 9 3/8" high, 15 1/2" wide. Frame size: 18" high, 24" wide. Condition: crazing, one small triangular loss in sky. William Ruthven Wheeler was born in Scio, Washington County, MI in 1832. He was primarily a portrait painter, but he did produce some landscapes. His first instruction came at an early age from an itinerant miniature painter, and he began his profession at the age of fifteen. At the age of 28 he studied for a short time in Detroit under Alvan Bradish. He moved to Hartford, Connecticut about 1862 and kept a studio there until 1893. A painting of Mount Washington was listed in the first annual exhibition of the Hartford Art Association in 1872, but he had added landscapes to his repertoire as early as 1866. 1,000.00 - 1,500.00



October Fine Estates Auction 10/4/2015

LOT #**435 Inv#: 1601013 Manner Of Kurt Schwitters, "Thrivo" Collage**

In the manner of Kurt Schwitters (German, 1887-1948), "Thrivo" mixed media collage signed and dated in pencil on mat "Kurt Schwitters 1927". Framed, not examined out of frame. Sight size: 11" high, 8 1/2" wide. Frame size: 16 1/4" high, 14" wide. Condition: loss to upper left corner, debris on mat upper center, horizontal fold. 500.00 - 700.00

**436 Inv#: 1736121 Possibly James Burns "Portrait of a Lady" O/C**

Possibly James Burns (American, 19th century), "Portrait of a Lady" oil on canvas, signed, dated lower right "J. Burns no. 3,1854", stenciled on canvas verso "From Covenhoven & Snyder, 130 Spring Street, New York". Sight size: 35 1/2" high, 28 1/2" wide. Frame size: 45 1/2" high, 39 1/2" wide. Condition: crazing. 500.00 - 700.00

**437 Inv#: 1801046 David Johnson Hudson River Scene O/B**

Manner of David Johnson (Am. 1829-1908), oil on board, Hudson River landscape scene in an elaborate giltwood frame. Later pencil inscription verso "David Johnson". Sight size: 11 1/2" high, 14 1/2" wide. Frame size: 26" high, 29 1/2" wide. 1,200.00 - 1,800.00

**438 Inv#: 1758105 F. Borgman, Mother & Child O/C**

F. Borgman, "Mother and Child" oil on canvas, signed upper left "F. Borgman". Sight size: 19 1/4" high, 15" wide. Frame size: 25 1/2" high, 21 3/4" wide. Condition: relined, a few small losses, crazing. 400.00 - 500.00

**439 Inv#: 1801051 Henri Francois "Still Life" O/C**

Henri Francois (French, 20th century), "Still Life" oil on canvas, signed lower left "Henri Francois". Sight size: 21 1/2" high, 27 1/2" wide. Frame size: 30" high, 36" wide. Condition: stains. 400.00 - 600.00

**LOT #****440 Inv#: 1793003 S. Ferat, Framed Gouache "La Famille Numero 2"**

Serge Ferat (Russian, 1881-1958) "La Famille Numero 2" gouache on paper, signed in pencil lower right "S. Ferat", framed, not examined out of frame. With gallery label from Albert Roullier Art Galleries, Chicago. Sight size: 7 1/2" high, 5 5/8" wide. Frame size: 10 5/8" high, 8 3/4" wide. 3,000.00 - 5,000.00

**441 Inv#: 1801195 Two Engravings Biblical Scenes**

Two engravings of Biblical scenes, both after old master works, one dated 1691. Sight size: 18" high, 16 1/4" wide to 19 1/2" high, 12 1/2" wide. Frame size: 22" high, 21 1/4" wide to 28" high, 20" wide. Condition: one with light soiling, the other trimmed within plate. 200.00 - 300.00

**442 Inv#: 1794012 English School "Gentleman On Horseback" O/Copper**

English School "Gentleman on Horseback" oil on copper, unsigned. Sight size: 8 3/4" by 11 1/8". Frame size: 15 1/2" high, 17 3/4" wide. Condition: soiling, small surface abrasions. 500.00 - 700.00

**443 Inv#: 1801190 Attributed Max Weyl "Sunset Landscape Scene" O/B**

Attributed to Max Weyl (Canadian, 1837-1914), "Sunset" oil on canvas board, landscape scene at dusk. Pencil inscription verso with title and attribution. Sight size: 10 1/4" high, 12 1/2" wide. Frame size: 16" high, 18 1/4" wide. 400.00 - 500.00

**444 Inv#: 1801173 Possibly Horace G. Anderson "Male Portrait" O/B**

Possibly Horace G. Anderson (Washington DC, 20th century), "Male Portrait" oil on board, signed, dated lower right "H.G. Anderson 25". Sight size: 19 1/4" high, 15 1/2" wide. Frame size: 25 1/2" high, 21 1/2" wide. Condition: a few edge losses. 200.00 - 300.00



October Fine Estates Auction 10/4/2015

LOT

445 Inv#: 1801064 Continental School "Portrait of Saint Agnes"

Continental School "Portrait of Saint Agnes" oil on canvas, unsigned. Sight size: 37 1/2" high, 30" wide. Frame size: 51" high, 43" wide. Condition: crazing. 800.00 - 1,000.00

**446 Inv#: 1583014 Louis De Burbure "Marine Scene" O/C**

Louis De Burbure (French, 1837-1911), "Marine Scene" oil on canvas, signed lower left. Sight size: 12" high, 23" wide. Frame size: 16 1/2" high, 27 1/2" wide. Condition: soiling, crazing, losses. 700.00 - 900.00

**447 Inv#: 1801209 Rene Lorain Colored Etching "Mt. Saint Michel"**

Rene Lorain (French, later 19th century), colored etching of Mount St. Michel at high tide, signed lower right, numbered "153" lower left. Framed, not examined out of frame. Sight size: 19 1/2" high, 23 1/2" wide. Frame size: 27" high, 30 3/4" wide. Condition: mat toning, foxing. 100.00 - 200.00

**448 Inv#: 1801181 American School "Portrait of Robed Woman" O/C**

American School "Portrait of Robed Woman" oil on canvas, unsigned. Sight size: 20 1/2" high, 14" wide. Frame size: 26" high, 20" wide. Condition: crazing, soiling, a couple small losses, restoration. 300.00 - 400.00

**449 Inv#: 1794009 Jules Benoit-Levy "Cardinal And Parrot" O/C**

Jules Benoit-Levy (French, 1866-1952), "Cardinal and Parrot" oil on canvas signed lower left "J. Benoit Levy". Sight size: 23 1/2" high, 19" wide. Frame size: 33 1/2" high, 28 3/4" wide. 800.00 - 1,200.00



LOT

450 Inv#: 1801057 American School "Moonlit Landscape" O/C

American School, 19th century, "Moonlit Landscape" oil on canvas, unsigned. Sight size: 9" high, 24" wide. Frame size: 12 1/4" high, 27 1/4" wide. Condition: light soiling. 200.00 - 300.00

**451 Inv#: 1766028 N.B. Smith "Beach Scene w/Children"**

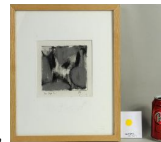
N.B. Smith (20th century), "Beach Scene with Children" acrylic on board, signed, dated lower right "N B Smith '87". Sight size: 15 1/2" high, 23 1/2" wide. Frame size: 22" high, 30" wide. 300.00 - 500.00

**452 Inv#: 1801197 Engraving After Hicks "Authors Of The U.S."**

Engraving "Authors of The United States" by A. H. Ritchie after Thomas Hicks, folio size, dated 1866. Sight size: 23 1/2" high, 35 1/2" wide. Frame size: 27" high, 38 1/2" wide. Condition: staining and foxing. 200.00 - 300.00

**453 Inv#: 1801127 Joseph Gerhard "Untitled" Chalk on Paper**

Joseph Gerhard (American, 20th century) "Untitled" graphite, graphite wash, charcoal, chalk on paper, dated, initialed "30 Sept. 92 JG". Framed, not examined out of frame. Sight size: 6" high, 6" wide. Frame size: 15" high, 12" wide. 200.00 - 300.00

**454 Inv#: 1801174 American School "Portrait Of Woman" O/C**

American School "Portrait of Woman" oil on canvas, unsigned, framed in arts and crafts frame. Sight size: 16 1/4" high, 14" wide. Frame size: 22 1/2" high, 20 1/4" wide. Condition: crazing, tears, losses. 100.00 - 200.00



October Fine Estates Auction 10/4/2015

LOT

455 Inv#: 1795003 Continental School, "Workers In Orchard"

O/C

Continental School, 20th C, "Workers In Orchard" oil on canvas, signed lower left "I. Bkevkjm"? Sight size: 13" high, 18 1/2" wide. Frame size: 19" high, 24" wide. Condition: soiling. 300.00 - 400.00

**456 Inv#: 1601014 Manner of Cy Twombly "Untitled"**

In the manner of Cy Twombly (American, 1928-2011), "Untitled" pencil, gouache on paper, dated, signed in pencil "1989 Cy Twombly". Framed, not examined out of frame. Sight size: 9 3/4" high, 6 1/2" wide. Frame size: 16 1/2" high, 13 1/4" wide. 500.00 - 700.00

**457 Inv#: 1601012 M. Schifano "Composition" Acrylic on Paper**

Mario Schifano (Italian 1934-1998), "Composition" acrylic on paper, monogrammed lower left. Framed, not examined out of frame. Sight size: 4 1/4" high, 5 1/2" wide. Frame size: 10 3/4" high, 12" wide. 300.00 - 500.00

**458 Inv#: 1801124 Two American Primitive Landscape Paintings**

Two American primitive landscape paintings, larger oil on board, smaller oil on canvas, unsigned. Sight size: 19 1/2" high, 13 1/2" wide to 32 3/4" high, 21 1/4" wide. Frame size: 27 1/4" high, 23" wide to 41 1/2" high, 29" wide. Condition: stains, soiling, losses. 300.00 - 400.00

**459 Inv#: 1794010 Etienne-Prosper Berne-Bellecourt "Soldier"**

O/P

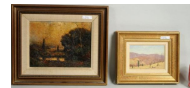
Etienne-Prosper Berne-Bellecourt (French, 1838-1910), "Soldier", oil on panel signed lower left "E. Berne Bellecourt". Sight size: 13 1/2" high, 10 1/4" wide. Frame size: 25" high, 22" wide. Condition: rubs to lower right edge. 1,200.00 - 1,500.00



LOT

460 Inv#: 1801183 Robert Nisbet Two Works

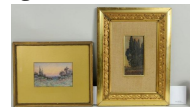
Robert Nisbet (American, 1879-1961), two works comprising landscape at dusk oil on canvas signed lower right and dated '03, together with a small landscape oil on board, inscribed verso. Sight size: 4 1/4" high, 6 1/2" wide to 8" high, 11" wide. Frame size: 9 1/2" high, 11 3/4" wide to 14 1/2" high, 17 1/4" wide. Condition: smaller with flaking paint. 600.00 - 800.00

**461 Inv#: 1422044 Manner of Boris Anisfeld "Costume Study"**

In the manner of Boris Anisfeld, (Russian/American, 1878-1973) "Costume Study - Military Officer" gouache on paper, unsigned. Framed, not examined out of frame. Sight size: 14 1/4" high, 8" wide. Frame size: 22" high, 14 3/4" wide. Condition: light soiling. 400.00 - 600.00

**462 Inv#: 1801058 Two Small Landscape Paintings**

Two small landscape paintings, comprising J.D. Hunting, American, 19th/20th century, watercolor signed lower right, framed, not examined out of frame and an unsigned oil on panel. Sight size: 4" high, 6 1/4" wide to 6 1/4" high, 3 1/4" wide. Frame size: 10 1/2" high, 13" wide to 16" high, 12" wide. 300.00 - 400.00

**463 Inv#: 1801204 Two Framed Nisbet Works On Paper**

R. Nisbet (American, 1879-1961), two prints, an etching of bathers on the shore, and a woodcut of a rocky coastline both signed lower right. Sight size: 6" high, 8 1/4" wide to 9 1/2" high, 11 3/4" wide. Frame size: 12 3/4" high, 16 1/2" wide to 15 1/2" high, 17 1/2" wide. Condition: mat toning. 80.00 - 100.00



October Fine Estates Auction 10/4/2015

LOT #**464 Inv#: 1801148 Two American Landscape Paintings**

Two 20th century American landscape paintings comprising Janet Kierstead, "Sauges Marsh c. 1982" oil on board, signed lower left, titled, dated verso and Wayne McEwan "Autumnal Landscape" oil on board, initialed lower left, titled verso. Sight size: 7 1/4" high, 9 1/2" wide to 7" high, 19 1/4" wide. Frame size: 12 3/4" high, 14 3/4" wide to 10 1/2" high, 22 1/2" wide. Condition: McEwan with light soiling. 300.00 - 500.00

**465 Inv#: 1801182 Sir Frank Brangwyn "The Windmill Dixmude" Etching**

Sir Frank Brangwyn (Belgium/Britain, 1867-1956), "The Windmill, Dixmude" etching signed lower right, the mat inscribed with title and artist. Framed, not examined out of frame. Sight size: 23 1/4" high, 31" wide. Frame size: 34 1/2" high, 41 1/2" wide. 200.00 - 300.00

**466 Inv#: 1795004 In Manner Of Edward Moran "Evening Sail"**

In the manner of Edward Moran (American, 1829-1901), "Evening Sail" oil on canvas, signed lower left "Ed Moran. Sight size: 17 1/4" high, 11 1/2" wide. Frame size: 26 3/4" high, 21" wide. Condition: soiling, small loss lower left edge. 300.00 - 400.00

**467 Inv#: 1766029 Abraham Weinbum "Exterior Village Scene, France"**

Abraham Weinbum (Polish, 1890-1943) "Exterior Village Scene, France" gouache on paper, signed, titled lower right "A. Weinbum Chatenes". Framed, not examined out of frame. Sight size: 19" high, 24 1/2" wide. Frame size: 26" high, 32" wide. 500.00 - 700.00

**LOT #****468 Inv#: 1384026 Carl W. Drescher "Commercial Street" & "Tugboat"**

Carl W. Drescher (American, 19th/20th Century), "Commercial Street, Provincetown Massachusetts" and "Tugboat Along Skyline" watercolors, both signed "Carl W. Drescher", the first dated 1958. Both framed, not examined out of frames. Sight size: 15 3/4" high, 19 1/2" wide to 15" high, 23" wide. Frame size: 17 7/8" high, 21 3/4" wide to 18" high, 26" wide. Condition: tugboat with toning, wavy paper, three holes in sky, Commercial Street with wavy paper, toning. 100.00 - 200.00

**469 Inv#: 1712011 George Benjamin Luks "Gramercy Park 1932" O/C**

George Benjamin Luks (American, 1866-1933), "Gramercy Park, New York City" 1932 oil on canvas, signed lower right "George Luks", accompanied by an authentication letter from Mercedes Luks, the artist's daughter. Sight size: 19 1/4" high, 15 1/4" wide. Frame size: 25 1/2" high, 21 1/2" wide. Provenance: Private Collection, North Carolina; Rago Arts and Auction Center, lot 56 May 15, 2009; private collection Westchester County NY. 8,000.00 - 10,000.00

**470 Inv#: 1384028 Serge Shart Lithograph "3 Figures Under Umbrella"**

Serge Shart (French, 1927-2011), "Three Figures Under An Umbrella" lithograph, pencil inscribed and signed lower border "EA This my own first litho to my friends Anita and Howie Richmond Paris 1970 Shart". Framed, not examined out of frame. Sight size: 29 1/2" high, 21 1/4" wide. Frame size: 35" high, 27 1/4" wide. Condition: several light spots in ground. 100.00 - 200.00



October Fine Estates Auction 10/4/2015

LOT #**471 Inv#: 1583016 Robert Howe, Oil on Board & Poster**

Robert Howe (American, 1954-2002), "Illustration for 1988 Ebel US Pro Indoor", oil on panel, titled, dated, signed verso "1987 Robert Howe", together with poster. 20 1/2" high, 15 1/2" wide. 500.00 - 700.00

**472 Inv#: 1799001 Lowell B. Nesbitt, Large O/C "Lily"**

Lowell Blair Nesbitt (Am. 1933-1993), "Lily", signed and titled verso, oil on canvas dated 1964. Provenance: Galerie Jollenbeck, Cologne, Sothebys NY, 9/27/10, Lot 283, Private CT Collection. Exhibited: Andrew Crispo Gallery, NY "Lowell Nesbitt Flowers 1964-1979" Sight size: 77" high, 77" wide. Frame size: 77 3/4" high, 77 3/4" wide. 4,000.00 - 6,000.00

**473 Inv#: 1801061 Impressionist School "North African Portrait" O/B**

Impressionist School, "North African Portrait" oil on board, unsigned. Sight size: 12" high, 8 3/4" wide. Frame size: 17" high, 13 3/4" wide. Condition: crazing, small losses. 300.00 - 500.00

**474 Inv#: 1384027 Carl W. Drescher, Two Rural Scenes**

Carl W. Drescher (American, 19th/20th century), two rural scenes, the larger oil on canvas, signed, dated '81, smaller gouache on board, signed, dated '58. Sight size: 13 1/2" high, 9 1/2" wide to 23 1/2" high, 35" wide. Frame size: 18" high, 14" wide to 28" high, 29 1/2" wide. Condition: oil with several tiny losses, small punch in sky. 200.00 - 300.00

**475 Inv#: 1801198 Chas. Gruppe "New England Boats Harbor Scene O/M**

Charles Gruppe (American, b. 1928), "New England Boats, Harbor Scene" oil on masonite, signed lower right. Paper label verso "Charles Gruppe Studio" with title. Sight size: 31 1/4" high, 47 1/4" wide. Frame size: 36" high, 52" wide. 300.00 - 500.00

**LOT #****476 Inv#: 1801063 F. Burg Landscape Scene O/C**

F. Burg, 19th/20th century, oil on canvas, landscape scene, signed lower left "F. Burg". Sight size: 9 1/2" high, 13 1/2" wide. Frame size: 20" high, 23 1/2" wide. Condition: scratch upper right, crazing, soiling. 200.00 - 300.00

**477 Inv#: 1801186 American School Wooded Landscape At Sunset O/C**

American School, wooded landscape at sunset, probably late 19th century in a contemporary foliate carved frame, oil on canvas. Sight size: 16 1/2" high, 23 1/2" wide. Frame size: 25" high, 31 1/2" wide. 300.00 - 400.00

**478 Inv#: 1801105 Arthur Edward Blackmore "Wooded Landscape" O/P**

Arthur Edward Blackmore (American, 1854-1921) "Wooded Landscape" oil on panel, signed, dated lower right "A E Blackmore 1902". Sight size: 8 1/2" high, 5 1/2" wide. Frame size: 13 1/4" high, 10 1/4" wide. Condition: soiling. 300.00 - 500.00

**479 Inv#: 1384036 John F. Leavitt "Mackerel Seiner" Watercolor**

John F. Leavitt (1905-1974), shipbuilder, writer, marine painter and curator of Mystic Seaport, CT "Mackerel Seiner" watercolor, titled in pencil on mat, signed lower right "John F. Leavitt". Framed, not examined out of frame. Sight size: 11 3/4" high, 17 3/4" wide. Frame size: 21 1/2" high, 24 3/4" wide. Condition: water stains to mat, back. 300.00 - 500.00

**480 Inv#: 1753023 Walter Koeniger "Winter Landscape" O/C**

Walter Koeniger (American/German, 1881-1943), "Winter Landscape" oil on canvas, signed lower right "W. Koeniger". Sight size: 21 1/4" high, 31 3/4" wide. Frame size: 26 3/4" high, 36 3/4" wide. Condition: light soiling. 1,500.00 - 2,000.00



October Fine Estates Auction 10/4/2015

LOT #**481 Inv#: 1799002 Michele Cascella "Little Blossoming Tree"**

Michele Cascella (Italian, 1927-1989) "Little Blossoming Tree", oil on canvas, signed lower right, label verso Galerie Juarez, Ital. Ref. No. 70-79/219 in the Archivo Generale del O'pera di Michele Cascella, compiled by Galleria Torcular, Milan. Sight size: 21 1/4" high, 10 1/4" wide. Frame size: 30 1/2" high, 19 1/2" wide. 3,000.00 - 5,000.00

**482 Inv#: 1766030 Keith Miller "The Tug Boat Brian McAllister"**

Keith Miller (Canadian, 20th century), "The Tug Boat Brian McAllister off Liberty Island with Statue of Liberty in Background", watercolor on paper, signed, dated lower right "K. K. Miller '83", with a portrait of the tug verso. Framed, not examined out of frame. Sight size: 21" high, 29" wide. Frame size: 34" high, 41" wide. 800.00 - 1,200.00

**483 Inv#: 1801125 Pair Framed Chromolithographs**

Pair of framed chromolithographs after Max Eglau, American, 19th century. Sight size: 4 1/4" high, 8 1/4" wide. Frame size: 9 1/2" high, 13 1/2" wide. Condition: soiling, one with punch, scratch. 80.00 - 100.00

**484 Inv#: 1801110 Italian School "Seascape" O/P**

Italian School, "Seascape" oil on panel, signed verso "Spezzia". Sight size: 4 1/2" high, 8 1/2" wide. Frame size: 14 1/2" high, 18 1/2" wide. Condition: soiling, small losses. 100.00 - 200.00

**485 Inv#: 1801191 American School Landscape Scene O/C**

American School oil on canvas, landscape scene of forest with distant hills, unsigned, later 19th century, in a cove molded giltwood frame. Sight size: 7" high, 8 3/4" wide. Frame size: 13 1/2" high, 15 1/2" wide. Condition: losses. 300.00 - 400.00

**LOT #****486 Inv#: 1801119 Sandy Swan "The Evangeline"**

Sandy Swan (American, b. 1934) "The Evangeline," Block Island. Block print titled, numbered, signed in pencil '12/63 Swan.' Framed, not examined out of frame. Sight size: 12 1/2" high, 15 3/4" wide. Frame size: 13 3/4" high, 16 3/4" wide. 200.00 - 300.00

**487 Inv#: 1801121 Helen F. Newton "Cottage" O/B**

Helen F. Newton (CT, 1878-1970) "Cottage" oil on board, signed verso (under paper backing) "Helen F. Newton". She was a pupil of Charles Hawthorne and Harry Leith-Ross. Sight size: 11 1/2" high, 15 1/2" wide. Frame size: 17" high, 21 1/2" wide. Condition: crazing, soiling, stains. 200.00 - 300.00

**488 Inv#: 1801116 Imagine Scene W/Paul & Linda McCartney**

Imagine scene with Paul and Linda McCartney outside the Dakota signed lower right "McCarthy '06" titled and inscribed verso. 36" high, 48" wide. 100.00 - 200.00

**489 Inv#: 1801120 Coll Josep Bardolet "Grupo Mallorquin" O/P**

Coll Josep Bardolet, Spanish, 1912-2007, "Grupo Mallorquin," oil on panel signed lower right "Coll Bardolet", titled, numbered, signed verso. Sight size: 5" high, 6 3/4" wide. Frame size: 9 1/2" high, 11 1/4" wide. 600.00 - 800.00

**490 Inv#: 1800045 French School "Study For Aubusson Chair Seat"**

French School, "Study for Aubusson Chair Seat" oil on canvas, unsigned. Sight size 29 1/2" high, 32" wide. Frame size: 32 3/4" high, 35 1/4" wide. Condition: losses, two vertical creases, stains. 300.00 - 400.00



October Fine Estates Auction 10/4/2015

LOT #**491 Inv#: 1799003 Poss. Joseph Israels "Testing The Water W/Father"**

Possibly Josef Israels (Dutch, 1824-1911)
 "Testing the Water with Father", signed lower right, watercolor on paper, private Connecticut collection. Framed, not examined out of frame. Sight size: 10 1/2" high, 7 3/4" wide. Frame size: 19 1/4" high, 16 1/2" wide. 3,000.00 - 4,000.00

**492 Inv#: 1801202 Charles Platt Two Etchings**

Two Charles Platt (American, 1861-1933) etchings, both full size harbor scenes, both signed in the plate and on the sheet, one bearing Society of American Etchers stamp. Framed, not examined out of frames. Sight/ Sheet size: 15 1/4" high, 19 1/2" wide to 21" high, 16 1/4" wide. Frame size: 23 1/2" high, 27 1/2" wide to 29" high, 24 1/2" wide. Condition: stains, toning. 200.00 - 300.00

**493 Inv#: 1801048 Balcomb Greene "Water & Sunlight" O/C**

Balcomb (John Wesley) Greene (Am. 1904-1990) oil on canvas of boats at harbor, titled verso "Water & Sunlight". Sight size: 44" high, 54" wide. Frame size: 45 1/2" high, 55" wide. Condition: water stains verso left side. 2,000.00 - 3,000.00

**494 Inv#: 1583017 Attr. Edward Redfield "River Landscape Scene" O/C**

Possibly Edward Redfield (American, 1869-1965), European river landscape scene, with fortifications beyond, oil on canvas, signed lower right "EW Redfield" and dated 1889. Sight size: 7 1/2" high, 11" wide. Frame size: 11" high, 14 1/2" wide. Condition: removed from stretcher and likely reduced in size. 1,200.00 - 1,800.00

**LOT #****495 Inv#: 1726037 Possibly Dutch School "Woman In Interior" O/C**

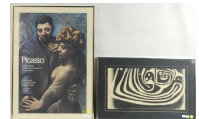
Possibly Dutch School "Woman in Interior" oil on canvas laid down on board, unsigned. Sight size: 15 1/2" high, 21 1/2" wide. Frame size: 23" high, 29" wide. Condition: crazing, restoration. 300.00 - 400.00

**496 Inv#: 1799004 Nicola Simbari "Boy With Wine Jug"**

Nicola Simbari (Italian, 1927-2012), oil on canvas, "Boy with Wine Jug", 1964, signed and dated lower right. Sight size: 23 3/4" high, 13 1/2" wide. Frame size: 31 1/2" high, 21" wide. 2,000.00 - 3,000.00

**497 Inv#: 1384037 Two 20th Century Artworks**

Two 20th century artworks comprising an unsigned stencil print and a Picasso exhibition poster numbered in pencil "529/5000". Both framed, not examined out of frames. Sight size: 19 1/2" high, 10 7/8" wide to 26 5/8" high, 18 3/4" wide. Frame size: 23 3/4" high, 15" wide to 27 1/4" high, 19 1/4" wide. 100.00 - 200.00

**498 Inv#: 1796001 David Hagerbaumer "Ducks Landing"****Lithograph**

David Hagerbaumer (American, b. 1921), "Ducks Landing" lithograph, dated in plate 1980, signed, numbered in pencil lower right "David Hagerbaumer 100/450". Framed, not examined out of frame. Sight size: 18 1/4" high, 24 1/4" wide. Frame size: 27 1/2" high, 32 1/2" wide. 200.00 - 400.00

**499 Inv#: 1801203 Biblical Engraving Of The Expulsion From Paradise**

Biblical engraving of The Expulsion from Paradise, folio size. Sheet size: 17 1/4" high, 21" wide. Frame size: 28" high, 31 1/2" wide. Condition: trimmed and with soiling, creases and small losses. 200.00 - 300.00



October Fine Estates Auction 10/4/2015

LOT #**500 Inv#: 1803004 Large Framed Print of Brussels**

Large framed print, Victorian boulevard scene in Brussels. Sight size: 23" high, 38 1/2" wide. Frame size: 33 1/2" high, 49" wide. 200.00 - 300.00

**501 Inv#: 1753018 Small Watercolor of Woodbury, CT**

Small watercolor of Woodbury, CT, signed, dated "Danl Howard, Woodbury '92". Framed, not examined out of frame. Sight size 5" high, 8" wide. Frame size; 11 3/4" high, 14 3/4" wide. Condition: toning. 80.00 - 100.00

**502 Inv#: 1726032 Engraving of George Washington, After Stewart**

Engraving of George Washington, after Stewart. Framed, not examined out of frame. Sight size: 15 3/4" high, 11 1/2" wide. Frame size: 22 1/2" high, 17 3/4" wide. Condition: stains, toning, tears. 80.00 - 100.00

**503 Inv#: 1801192 Picasso Toreros Four Original Lithographs**

Picasso Toreros, volume by Jaime Sabartes, 1st edition (1961) with four original lithographs, one in color. Condition: dust jacket chipped, some foxing to lithographs. 10" high, 13" wide. 200.00 - 400.00

**504 Inv#: 1801187 Lynd Ward "Prelude To A Million Years"**

Lynd Ward, "Prelude To A Million Years", book of wood engravings, 1st edition (1933) copy 484 (of 920), signed, inscribed "FFE for Christmas 1933". 8 3/4" high, 5 1/8" wide. 200.00 - 300.00

**LOT #****505 Inv#: 1801188 Edith Wharton "Italian Villas & Their Borders"**

Edith Wharton, Italian villas and their gardens, 1st edition (1904) with illustrations by Maxfield Parish. 10 1/4" high, 7 1/2" wide. 100.00 - 200.00

**506 Inv#: 1801189 Ephemera Lot Harper's Weekly 70 Plus Volumes**

Ephemera lot, 19th century Harper's Weekly, 70 plus volumes, mostly 1860's. Profusely illustrated by Homer, Nast, etc. together with The Worlds' Columbian Exposition Portfolio, 66 views (1893). 7 1/4" high, 10 1/4" wide to 16 1/2" high, 12" wide. 100.00 - 200.00

**507 Inv#: 1801193 Group Fine Arts Books Picasso, Mapplethorpe**

Fine Art books, Picasso 347 1st edition in clamshell case (1970), and Mapplethorpe, 1st edition (1992). Both folio size, some soiling to case and dust jacket. 13" high, 12" wide to 17 1/2" high, 12 1/2" wide. 200.00 - 400.00

**508 Inv#: 1801194 K. Ogawa, "Costumes & Customs Of Japan" Vol. II**

K. Ogawa, "Costumes and Customs of Japan" Volume II only with twelve collotype prints of Japanese maidens in various pursuits, stiff paper bound. Condition: some foxing and staining, front cover detached but present. 16" high, 11 3/4" wide. 200.00 - 400.00

**509 Inv#: 1801208 Abraham Lincoln Engraving & 1866 Biography**

Abraham Lincoln wood engraving by Timothy Cole, signed and dated 1919, together with Holland, The Life of Abraham Lincoln, 1st Edition 1866. The engraving sight size: 11" high, 7 1/4" wide. Frame size: 25" high, 19 1/4" wide. 200.00 - 300.00



October Fine Estates Auction 10/4/2015

LOT #**510 Inv#: 1802001 Tennessee Williams/Jeff Chandler****Autographed Book**

Tennessee Williams and Jeff Chandler autographed copy of "Suddenly Last Summer" inscribed by both "To Ronnie", published by New Directions Books. 8 1/4" high, 5 1/2" wide. Condition: cover wear, losses, stains, toning. 300.00 - 400.00

**511 Inv#: 1785001 Large Caucasian Rug**

5'4" wide, 8'8" long. All rugs sold as is. 400.00 - 600.00

**512 Inv#: 1785002 Caucasian/Turkish Rug**

3'10" wide, 7'2" long. All rugs sold as is. 20.00 - 300.00

**513 Inv#: 1785003 Caucasian Area Rug**

4'1" wide by 5'4" long. All rugs sold as is. 200.00 - 300.00

**514 Inv#: 1173112 Oriental Carpet**

Oriental carpet. 10' long, 8' 2" wide. Condition: stains. All rugs sold as is. 200.00 - 300.00

**515 Inv#: 1241199 Hamadan Rug**

Hamadan rug, 5'1" long, 3' 3" wide. Condition: wear, holes, losses. All rugs sold as is. 150.00 - 200.00

**516 Inv#: 1775050 Caucasian Room Size Carpet**

Caucasian room size carpet. 12' 2" high, 9' 7" wide. Condition: pile wear, loss, losses, stains. All rugs sold as is. 400.00 - 600.00

**LOT #****517 Inv#: 1769319 Shirvan Rug**

Shirvan rug, 4'9" high by 3'3" wide. Condition: wear, holes, losses, repairs. All rugs sold as is. 200.00 - 400.00

**518 Inv#: 1758102 Kashan Prayer Rug**

Kashan prayer rug, 6' 5" long by 4' 1" wide. Condition: wear, end loss. All rugs sold as is. 1,000.00 - 1,500.00

**519 Inv#: 1241212 Caucasian Rug**

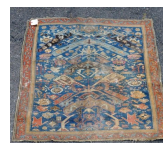
Caucasian rug, 4'4" by 8'1". Wear, side, end losses. All rugs sold as is. 200.00 - 300.00

**520 Inv#: 1769320 Persian Rug**

Persian rug, 7' 5" high, 3' 3" wide. Condition: wear, losses, repairs. All rugs sold as is. 200.00 - 400.00

**521 Inv#: 1801130 Caucasian Rug**

Caucasian rug, 58" long, 46 1/2" wide. Condition: wear, stains, losses. All rugs sold as is. 80.00 - 100.00

**522 Inv#: 1801131 Persian Rug**

Persian rug, 98" long, 52" wide. Condition: wear, stains, losses. All rugs sold as is. 80.00 - 100.00

**523 Inv#: 1241202 Caucasian Rug**

Caucasian rug, 4' 7" long, 3' 1" wide. Condition: wear, repair. All rugs sold as is. 100.00 - 200.00



October Fine Estates Auction 10/4/2015

LOT #**524 Inv#: 1758103 Caucasian Kilim Rug**

Caucasian Kilim rug, 19th century, 9' long, 5' 2" wide. Condition: wear, edge, end losses. All rugs sold as is. 300.00 - 400.00

**525 Inv#: 1241203 Caucasian Rug**

Caucasian rug, 4' 11" long, 4' 0" wide. Condition: wear. All rugs sold as is. 200.00 - 300.00

**526 Inv#: 1651013 Turkoman Rug**

Turkoman rug, 3' 7" by 5' 7", edge losses, stains. All rugs sold as is. 200.00 - 300.00

**527 Inv#: 1241204 Caucasian Rug**

Caucasian rug, 12' 1" long, 3' 11" wide. Condition: Wear, repairs, losses. All rugs sold as is. 400.00 - 500.00

**528 Inv#: 1758104 Sarouk Malayer Carpet**

Sarouk Malayer rug, 6' 10" long, 4' 8" wide. Condition: wear, end loss. All rugs sold as is. 300.00 - 400.00

**529 Inv#: 1241205 Caucasian Runner**

Caucasian runner. 9' 3" long, 2' 2" wide. Condition: wear, repairs, holes, losses. All rugs sold as is. 100.00 - 150.00

**530 Inv#: 1241206 Two Turkish Mats**

Two Turkish mats. Larger 1' 11" long, 1' 6" wide. Condition: wear, losses. All rugs sold as is. 80.00 - 100.00

**LOT #****531 Inv#: 1241207 Turkish Mat**

Turkish mat. 2' 9" long, 1' 0" wide. Condition: wear, losses. All rugs sold as is. 40.00 - 80.00

**532 Inv#: 1241208 Caucasian Prayer Rug**

Caucasian prayer rug. 4' 2" long, 3' 6" wide. Condition: wear, repairs, losses. All rugs sold as is. 100.00 - 200.00

**533 Inv#: 1241209 Turkish Rug**

Turkish rug. 5' 1" long, 3' 8" wide. Condition: wear, holes, losses. All rugs sold as is. 100.00 - 150.00

**534 Inv#: 1241210 Kazak Rug**

Kazak rug, 20th century. 5' 6" long, 3' 8" wide. Condition: stains. All rugs sold as is. 100.00 - 150.00

**535 Inv#: 1241211 Caucasian Rug**

Caucasian rug. 11' 7" long, 5' 11" wide. Condition: wear, side, end losses, cut at one end. All rugs sold as is. 100.00 - 150.00

**536 Inv#: 1758107 Turkish Rug**

Turkish geometric rug, 40" long, 41" wide. Condition: several small moth bites. All rugs sold as is. 200.00 - 300.00

