

Woodbury Auction LLC
710 Main Street South (Auction Gallery & Pick up)
PO Box 957 (Mail & Payments)
Woodbury, CT 06798
Phone: 203-266-0323 Fax: 203-266-0707

April Connecticut Fine Estates Auction 4/26/2015

LOT #

1 Handel Desk Lamp

Handel desk lamp, base in copper finish with interior painted glass shade signed "Handel". 14 1/4" high, 10" wide. Condition: base with repairs, refinished, a few interior edge chips, signature rubbed. 500.00 - 700.00



2 "The Gibson" Style Three Ukulele

"The Gibson" style three ukulele circa 1920-1930. 20 3/4" long, 6 3/8" wide. Condition: age cracks, scratches, soiling, finish wear, loss, small edge chips to top. 1,000.00 - 1,500.00



3 Platinum & Diamond Wedding Band

Platinum and diamond wedding band containing twenty round diamonds weighing 2.02 carats total weight. Diamonds are F color, SI1 clarity set in a common prong platinum mounting. Ring size 6. Gross weight 2.5 dwt. (Appraisal on file). 2,000.00 - 4,000.00



4 R.W. Binks "Portrait of German Shepard" Watercolor

Reuben Ward Binks (British, 1880-1950), portrait of "Bodo" commissioned by Geraldine Rockefeller Dodge of her pet German Shepherd "Bodo," watercolor and gouache on paper, titled, signed, dated lower border "Bodo Ward Binks 31". Framed, not examined out of frame. Sight size: 11 3/4" high, 13" wide, frame size: 18 1/2" high, 19 3/4" wide. Provenance: Geraldine Rockefeller Dodge Collection, Sotheby Parke Bernet, Inc., NY, NY, Sale 3791, October 7, 1975, lot 438. 400.00 - 600.00



LOT #

5 Four Tiffany & Co. Silver Shell Dishes

Four Tiffany & Co. sterling silver shell form dishes, monogrammed. 2 7/8" long, 2 1/2" wide. Weight: 4.720 OZT. Condition: scratches. 200.00 - 300.00



6 Southern Walnut/Yellow Pine Hepplewhite Stand

Southern walnut and yellow pine Hepplewhite stand, with square top and single drawer on square tapering legs. 28" high, 17" wide, 16" deep. Condition: split to top, lacks drawer pull. 200.00 - 300.00



7 French Marble Art Deco Clock Garniture

French marble Art Deco three piece clock garniture with enamel dial signed "Charmeux Montereau". 6 1/2" high, 5" wide to 9 3/4" high, 12 1/2" wide. Condition: marble chips, not guaranteed running. 200.00 - 400.00



8 Three Marklin German Toy Cars

Three Marklin German toy cars, including a green windup sedan #1903, and a red windup Reichspost postal truck #1989. 4 3/4" high, 14 3/4" long to 7 1/4" high, 12" long. Condition: soiling, lacking keys. 600.00 - 800.00



9 English Sterling Pan w/Handle, Marked Paul Storr

English sterling silver pan made in 1786, hallmark PS for Paul Storr (1771-1844). 4 1/2" high, 16 1/2" long. Gross weight: 38.9 OZT. Condition: scratches, repairs, possible alteration. 900.00 - 1,200.00



April Connecticut Fine Estates Auction 4/26/2015

LOT #

10 Pair Platinum Diamond & Sapphire Wedding Bands

Pair of platinum, diamond and sapphire wedding bands each containing ten round diamonds and ten round sapphires each weighing approximately two carats total weight. Ring size 6. Gross weight 4.9 dwt. 3,000.00 - 4,000.00



11 Pair Art Deco Reclining Nude Sculptures

Pair of bronzed metal art deco reclining nude sculptures, unsigned. 12" long, 4" wide. 300.00 - 500.00



12 Folk Art Carnival Gaming Wheel, Paint Decoration

Folk art carnival gaming wheel with paint decoration. 47" high, 35 1/2" wide. Condition: use wear, white paint drips, spatter. 500.00 - 700.00



13 14K Gold, Sterling, Diamond & Opal Tiffany Pin

14K gold, sterling, diamond and opal pin marked "Tiffany & Co. Sterling" with incised initials, date RCB '96. 2 1/4" long, 5/8" wide. 400.00 - 600.00



14 Lalique Crystal Eagle Head Paperweight

Lalique crystal eagle head paperweight incised on base "Lalique c France." 4 1/2" high, 5 3/4" long. 300.00 - 500.00



15 Gerardo Lopes Mexican Sterling Silver Footed Tray

Gerardo Lopes Mexican sterling silver footed tray, 20th century, stamped "G. Lopes made in Mexico sterling 925". 3 1/4" high, 13 3/4" long. Weight: 16.77 OZT. 200.00 - 300.00



LOT #

16 Sharps Derringer Revolver, Philadelphia

Sharps Derringer revolver stamped C. Sharps and Co. Philada. PA. C. Sharps Patent 1859 on sides, 21639 on butt. 3 1/4" high, 5 1/2" long. Condition: scratches, dings, small chip to grip. 600.00 - 800.00



17 Pair Faience Pottery Vases, Poss. Edouard Gilles

Pair of Continental majolica or faience pottery vases with applied floral decoration, fitted with gilt metal mounts, stamped 234 and "P" on base, possibly Edouard Gilles. 18" high, 10" wide. Condition: chips, losses, repairs, drilled for lamps. 400.00 - 600.00



18 Group New England Indian Arrowheads

Group of eighteen arrowheads mostly in the "narrow point tradition" and twenty four in the "broad point tradition" from Connecticut and New York, in Riker cases. 1 5/8" long, 7/8" wide to 2 3/4" long, 1 3/8" wide. Condition: chips, losses. 200.00 - 300.00



19 Set Ten Antique Sterling Brandy Warming Spoons

Set of ten sterling brandy warming spoons by Mauser Mfg. Co., monogrammed. 4 1/2" high, 1 1/4" wide. Gross weight 4.890 OZT. Condition: finish wear, loss to handles, bends, one with detached handle.

International clients are ineligible to bid on this item. It is for sale only within the United States except not to CA, NY, NJ. It is the responsibility of the buyer to obtain any necessary documentation, permits or paperwork necessary including but not limited to such documents as required to comply with any and all requirements and restrictions imposed by Federal trade regulations related to endangered species prior to finalization of any sale. 600.00 - 900.00



April Connecticut Fine Estates Auction 4/26/2015

LOT #**20 Japanese Satsuma Porcelain Palace Vase**

Important Japanese Satsuma porcelain palace vase, circa 1890, with moriage and gilt decoration, having elaborate tassel form handles, body with depictions of Samurai one side, interior figural scene verso. 42 3/4" high, 18 1/2" diameter. Condition: hairline rim cracks, small chips, gilt, enamel wear, loss. 1,000.00 - 1,500.00

**21 Vintage Rolex Explorer II Men's Watch**

Vintage Rolex stainless steel oyster perpetual date "Explorer II" men's watch, circa 2005, with white dial, band marked 78360. Case: 1 7/8" high, 1 3/4" wide, band: 3/4" wide. Condition: use wear, light scratches, runs intermittently. 2,000.00 - 3,000.00

**22 George III Sterling Silver Tea Caddy**

George III sterling silver tea caddy made in 1796, makers' mark WV. 4 1/4" high, 4 1/2" wide. Weight: 10.370 OZT. Condition: scratches, a couple dings, repairs, missing one screw and washer from finial, lid does not close unless pushed. 200.00 - 300.00

**23 Folk Art Inlaid Sewing Box, Heart & Star Motif**

Folk Art inlaid sewing box with heart, star and diamond inlay, lift up top and working drawer with pin cushion surmount, 12" high, 14" wide, 10" deep. Condition: wear, losses, some parts missing or detached, bag with some parts. 400.00 - 500.00

**24 Pair German Bronze Art Deco Tiger Bookends**

Pair of German bronze art deco tiger bookends on marble bases, unsigned, together with sales receipt from Phyllis Polsky Interiors, Inc., Woodmere, NY. 5 7/8" high, 4" wide. 600.00 - 800.00

**LOT #****25 Baccarat Crystal Vase**

Baccarat crystal vase, tri-lobed form, marked on base. 8" high, 3 1/2" diameter. 100.00 - 150.00

**26 Antique American Painted Leather Fire Bucket**

Antique American hand painted leather fire bucket for "Citizens Fire Co. Relief". Excluding handle: 12" high, 8" diameter. Condition: wear, losses. 500.00 - 700.00

**27 Knights of Columbus Sword**

Knights of Columbus sword owned by George G. Kineon, M.D., Superintendent for Ohio Hospital for Epileptics in Gallipolis, Ohio, circa 1930. 36 1/2" long, 5 1/2" wide. Condition: finish wear, loss, soiling. International clients are ineligible to bid on this item. It is for sale only within the United States except not to CA, NY, NJ. It is the responsibility of the buyer to obtain any necessary documentation, permits or paperwork necessary including but not limited to such documents as required to comply with any and all requirements and restrictions imposed by Federal trade regulations related to endangered species prior to finalization of any sale. 100.00 - 200.00

**28 Wooten Roll Top Burled Walnut Rotary Desk**

Wooten roll top burled walnut rotary desk, tambour roll top opening to a fitted interior and writing surface, above three drawers and a pair of pull out writing surfaces over rotary side cabinets opening to further small drawers and compartments. 49 1/2" high, 59" wide, 33 1/2" deep. Condition: brass lock plate detached but present, some hardware loose. Estate condition with some chipping, splitting, scratches. 4,000.00 - 6,000.00



April Connecticut Fine Estates Auction 4/26/2015

LOT #

29 Three Vintage Signed Spalding Baseballs

Three vintage signed Spalding baseballs, one faintly signed Red Rolfe, Freddie Fitzsimmons, the other two with various signatures including Charles H. Knapp, John Murphy and others. 2 3/4" diameter. Condition: soiling, stains, fading. 100.00 - 200.00



30 Group Silver Jewelry Items

Group of silver jewelry items, comprising a "Genuine Norseland" sterling dove pin, a Mexican malachite sterling pin/pendant, a Lunt sterling pin, tie tac and two tie clips, a Navajo pin, silver beads, and a large group of costume jewelry. 3/4" high, 7/8" wide to 14 1/2" long, 1/2" wide. Gross weight: 2.0 OZT. Condition: repair to dolphin pin, dent to one bead, scratches. 200.00 - 300.00



31 Wood, Brass & Steel Long Rifle

Wood, brass and steel long rifle. 46 1/2" long, 4" wide. Condition: breaks, cracks, losses, repairs, paint residue. 300.00 - 400.00



32 Vintage Medical Anatomical Model On Stand

Vintage medical anatomical torso model on revolving stand manufactured by Denoyer Geppert Company, Chicago, Illinois with original label. 37" high, 16 1/2" wide. Condition: use wear, scattered stains, scuffs, nicks. 600.00 - 800.00



33 Group Collectible Knives & Related Items

Group of collectible knives and related items including a case "Cheyenne", a Schrade, a Ted Dowell, Al Mar Centofante, two African knives and others. Provenance: descended in several generations of a Connecticut family. 3 5/8" long, 1 1/8" wide to 13 1/2" long, 3 1/4" wide. Condition: use wear, scratches. International clients are ineligible to bid on this item. It is for sale only within the United States except not to CA, NY, NJ. It is the responsibility of the buyer to obtain any necessary documentation, permits or paperwork necessary including but not



LOT #

limited to such documents as required to comply with any and all requirements and restrictions imposed by Federal trade regulations related to endangered species prior to finalization of any sale. 400.00 - 600.00

34 Pair Rare Boston Brass/Iron Fire Tool Rests

Pair of rare Boston wrought iron fire tool rests with brass ball finials. 5 3/4" high, 6" long. Condition: rust, paint residue. 100.00 - 200.00



35 Vintage Shirley Temple Doll w/Asian Doll

Vintage Shirley Temple doll and Asian doll "Genuine Shirley Temple Doll" No. 2020 made in USA by Ideal Novelty and Toy Company, in original box, dressed in a nurses' outfit, also with additional dress, together with a vintage Japanese doll. 9" high, 3" wide to 18 3/4" high, 7" wide. Condition: Shirley Temple with handling wear, stains, soiling, surface crazing, small superficial chip or worn spot to tip of nose, Asian doll with handling wear, soiling, losses. 200.00 - 400.00



36 Angel Ortiz (LAI) "Torsos" Two Mixed Media

Angel Ortiz (LAI) (b. 1967), "Torsos" mixed media spray, marker on pair of plastic mannequin forms. 18 1/2" high, 15" wide to 17 1/2" high, 16" wide. Condition: breaks to some mounting holes at edges, a few small scuffs. Angel Ortiz began a collaboration with Keith Haring at age sixteen and left high school to work for Haring. They had their first joint exhibition at Tony Shafrazi Gallery in 1982. His work can be found in museums worldwide. 400.00 - 600.00



37 Continental Silvered Brass Footed Water Urn

Possibly 18th century Continental silvered brass baluster form footed hot water urn with knopped lid and scrolled handles, having two spouts. One leg slightly bent. 7" diameter, 14" high. 100.00 - 150.00



April Connecticut Fine Estates Auction 4/26/2015

LOT #

38 English Silkwork Embroidery

English silkwork embroidery, 19th century, of boy under tree with hand drawn face and hands. Framed, not examined out of frame. Sight size: 12 1/2" high, 11 1/2" wide. Frame size: 15 1/4" high, 14 3/4" wide. Condition: toning, stains, tears, small losses. 400.00 - 500.00



39 Knight's Templar Sword & Belt

Knight's Templar sword and belt. Provenance: old Rhode Island private collection. Sword: 40 1/2" long, 5 1/4" wide. Condition: finish wear, loss, soiling, oxidation, rust, fabric wear, loss. International clients are ineligible to bid on this item. It is for sale only within the United States except not to CA, NY, NJ. It is the responsibility of the buyer to obtain any necessary documentation, permits or paperwork necessary including but not limited to such documents as required to comply with any and all requirements and restrictions imposed by Federal trade regulations related to endangered species prior to finalization of any sale. 100.00 - 200.00



40 Preisner Sterling Silver Revere Bowl

Preisner sterling silver Revere bowl. 4 3/8" high, 8 1/8" diameter. Weight: 13.780 OZT. 200.00 - 300.00



41 Vintage ATSCO "Oscar" Bakelite Mannequin

Vintage ATSCO "Oscar" bakelite mannequin manufactured in the 1930's in Los Angeles, CA, signed on back "ATSCO Oscar 8911 1/2 Sunset Los Angeles". 20 1/2" long, 5 1/2" wide. Condition: scuffs, chips, crack, losses. 400.00 - 500.00



LOT #

42 Wrought Iron Armillary

Wrought iron armillary. 70" high, 25 1/2" wide. Condition: wear from exposure to elements, rust. 400.00 - 600.00



43 Miniature W/C On Ivory "Portrait Luther Blevin"

Miniature watercolor on ivory portrait of Luther Blevin, Norwich, CT, circa 1820, legend verso. Sight size: 2 1/2" high, 2" wide. Frame size: 5" high, 4 3/8" wide. International clients are ineligible to bid on this item. It is for sale only within the United States except not to CA, NY, NJ. It is the responsibility of the buyer to obtain any necessary documentation, permits or paperwork necessary including but not limited to such documents as required to comply with any and all requirements and restrictions imposed by Federal trade regulations related to endangered species prior to finalization of any sale. 300.00 - 500.00



44 Three Egyptian Framed Architectural Engravings

Three Egyptian architectural engravings. Framed, not examined out of frames. Sight size: 9 1/2" high, 15 1/2" wide to 10 1/2" high, 14 1/4" wide. Frame size: 16 1/2" high, 19 3/4" wide to 14 3/4" high, 20 1/2" wide. Condition: stains, foxing. 100.00 - 200.00



45 Four Vintage Children's Games, Spielzeug Poster

Four vintage children's games and a Spielzeug museum poster. 8 1/2" high, 5 3/4" wide to 34" high, 24 1/2" wide. Condition: wear, losses. 200.00 - 300.00



46 Group of Silver Flatware

Group of silver flatware including eleven Porter Blanchard butter knives, a Birmingham silver serving spoon made in 1904, makers' mark E & Co. Ltd., a Gorham serving spoon and other items. 2 3/8" long, 5/8" wide to 11 1/2" long, 2 1/4" wide. Weighable silver: 25.07 OZT. Condition: scratches, dents, dings, bends, edge nicks. 200.00 - 300.00



April Connecticut Fine Estates Auction 4/26/2015

LOT #**47 Manner of Fernando Botero, "Priest" O/C**

In the manner of Fernando Botero (Columbian, B. 1932), "Priest" oil on canvas, signed, dated lower left "Botero '80". Sight size: 65" high, 49 1/2" wide. Frame size: 68" high, 52 1/2" wide. Condition: several areas of crazing, scattered spots, light horizontal scuffs lower border.

500.00 - 700.00

**48 Randall Model 12 "Smithsonian Bowie" Knife/Sheath**

Randall Model 12 "Smithsonian Bowie" knife in sheath, with faux ivory handle, blade stamped Randall Made Orlando, Fla. A/1, sheath stamped with Randall logo and 1211, with salmon sharpening stone marked Fine India-Made in USA. 16 1/2" long, 4 3/8" wide. Condition: light wear to sheath. 700.00 - 900.00

**49 Durgin Partial Sterling Silver Flatware Service**

Durgin partial sterling silver flatware service in the Victorian/Sheraton pattern, circa 1918, "B" monogram in custom fitted case, comprising twelve dinner knives, eleven luncheon knives, twelve butter knives, twelve fish knives, twelve dinner forks, eight luncheon forks, eleven salad forks, ten salad forks, twelve seafood forks, twelve ice cream forks, twelve iced tea spoons, seven teaspoons, twelve bouillon spoons, ten coffee spoons, twelve soup spoons, ten dessert spoons, eight serving spoons, five piece carving set. 5 1/2" long, 3/4" wide to 14 1/2" long, 1 1/4" wide. Weighable silver approximately 206.735 OZT. Condition: use wear, edge nicks, scratches. 2,500.00 - 3,000.00

**50 Large Russian Brass Samovar Lamp**

Large Russian brass Samovar, now as lamp. Samovar 21 1/2" high, 11" wide. Condition: dents, dings. 200.00 - 300.00

**LOT #****51 Three Georgian Silver Pap Boats**

Three Georgian sterling silver pap boats, all made in London, one by John Emes, 1805, one by Thomas Shepherd, 1787 and one dated 1808. 5" long, 2 5/8" wide to 5 1/4" long, 2 7/8" wide. Weight: 5.635 OZT. Condition: a couple small dings, dents. 100.00 - 200.00

**52 Manner of Reuben Nakian Bronze "Leda & The Swan"**

Manner of Reuben Nakian (American, 1897-1986) abstract mythological bronze "Leda And The Swan", on a brick form rectangular base, inscribed "RBW Inc.", foundry mark for Roman Bronze Works, Inc., New York. 11 1/2" high, 11 1/2" wide, 8" deep. Condition: possible altered work, legs likely shortened, and is an unauthorized cast in the opinion of the artist's estate representative. Provenance: Private CT Collection 2,000.00 - 2,500.00

**53 Johnny Walker Rubberoid Advertising Figure**

Johnny Walker rubberoid advertising figure on wood base. Figure: 23 1/2" high, 16" wide. Condition: crazing, stains, cracks, loss to cane top, lacking monocle. 100.00 - 200.00

**54 Bronze Dachshund Sculpture**

Bronze Dachshund sculpture, unsigned. 6 1/4" high, 12" long. 400.00 - 600.00

**55 Cast Metal Classical Figure Woman w/Fruit**

Cast metal classical figure of a woman with fruit. 45" high, 15" wide. Condition: wear from exposure to elements, cracks, losses, rust. 300.00 - 500.00



April Connecticut Fine Estates Auction 4/26/2015

LOT #**56 Jacob Petit Vase & Six Continental Porcelain Items**

Seven Continental porcelain items including a Jacob Petit (French, 1796-1868) vase, initialed on base; a Sevres or Sevres style parcel gilt swan, signed on base and other items. 4 3/4" high, 2 3/4" wide to 5 1/4" high, 4 3/4" wide. 200.00 - 300.00

**57 Manner of Fernando Botero, "Lady" O/C**

In the manner of Fernando Botero (Columbian, B. 1932), "Lady" oil on canvas, signed, dated lower right "Botero '80". Sight size: 65" high, 49 1/2" wide. Frame size: 68" high, 52 1/2" wide. Condition: scattered spots, soiled area in lower left in ground by hip, light horizontal scuffs lower border, a few small areas of crazing. 500.00 - 700.00

**58 Elaine Plishker Auchmoody "New England Scene" O/C**

Elaine Plishker Auchmoody (American, 1910-1976), "New England Scene" oil on canvas, signed, dated lower right "48". Label verso on frame "#27 Crate. Title: Solitude Americana" Sight size: 24 1/2" high, 29 1/2" wide. Frame size: 30 1/2" high, 35 1/2" wide. Condition: one scuffed, depressed area between house and barn 1/4" wide, 2" long. 200.00 - 400.00

**59 Jeanette Agnew Lyon "Sailboats" O/B**

Jeanette Agnew Lyon (Ohio, B. 1862), "Sailboats" oil on board, signed lower right. "Ruth Coulter Galleries Cleveland, Ohio" label verso. Sight size: 16 1/2" high, 13 1/2" wide. Frame size: 20" high, 16 3/4" wide. 500.00 - 700.00

**LOT #****60 M. Shifano "Composition" Acrylic on Paper**

Mario Schifano (Italian 1934-1998), "Composition" acrylic on paper, monogrammed lower left. Framed, not examined out of frame. Sight size: 4 1/4" high, 5 1/2" wide. Frame size: 10 3/4" high, 12" wide. 500.00 - 700.00

**61 C. Myron Clark "Nova Scotia Brigantine" O/B**

C. Myron Clark (Massachusetts, 1858-1925), "Nova Scotia Brigantine" oil on board, signed, dated 17? lower left, signed, titled verso. Sight size: 9 1/2" high, 14 1/2" wide. Frame size: 15" high, 20" wide. Condition: painting loose in frame, backing to board lifting top left. 600.00 - 800.00

**62 Spanish School, 20th C. "Elders" O/C**

Spanish School, 20th century, "Elders" oil on canvas, signed indistinctly lower right Huma? Sight size: 31" high, 23" wide. Frame size: 36 1/2" high, 28" wide. Condition: scattered small losses, restoration upper left, patch verso. 200.00 - 400.00

**63 Group Of Three Thomas McKnight Serigraphs**

Thomas McKnight (American, born 1941), three serigraphs comprising "La Samana" AP 33/40 (1988), "Saint Barts" PP 5/6 (1987-88) and "Martinique" HC 38/40 (1987/88), all signed in pencil lower right "McKnight" framed, not examined out of frames. Sight size: Approximately 17 1/2" high, 19 1/2" wide. Frame size: 27 1/2" high, 29 1/4" high. Condition: "La Samana" with mildew on mat. 800.00 - 1,200.00

**64 Dorothea Fox "Farm Boy, Collie and Chick" O/C**

Dorothea Fox (Connecticut 1914-1999) "Farm Boy, Collie and Chick" oil on canvas illustration signed lower right "Fox". Sight size: 18" high, 15 1/2" wide. Frame size: 21" high, 18 1/2" wide. Condition: minor crease below signature, with small paint loss. 300.00 - 400.00



April Connecticut Fine Estates Auction 4/26/2015

LOT

65 After George Veal "Our Gentlemen Riders" Engraving

After George Veal (English, 19th century), "Our Gentlemen Riders" hand colored engraving, engraved by C.R. Stock, restrike. Framed, not examined out of frame. Sight size: 28" high, 42" wide. Frame size: 42" high, 57" wide. Condition: a few small spots. 200.00 - 300.00

**66 C. Harry Allis "Landscape" O/B**

C. Harry Allis (American, 1870-1938) "Landscape" oil on board, signed lower right, in original frame. Sight size: 19 1/2" high, 23 1/2" wide. Frame size: 25" high, 29" wide. 1,200.00 - 1,500.00

**67 A.Truchel "Children at Play in Luxembourg Park"**

Abel Truchel (French, 19th/20th century), "Children At Play in Luxembourg Park" original poster, printed signature lower right, monogram lower left. Framed, not examined out of frame. Sight size: 25" high, 33" wide. Frame size: 28" high, 37" wide. Condition: a few small spots, small paper scuff above boys' left shoulder. 400.00 - 600.00

**68 Allan Hatch, American Folk Artist "Horse Race"**

Allan Hatch, American folk artist, (20th century), "Horse Race" oil on panel, signed, dated on verso 1991. Sight size: 3 1/4" high, 4" wide. Frame size: 9 3/4" high, 11 1/4" wide. 200.00 - 300.00

**69 R.S. Austin Two Works "Sailboats" O/C**

Robert S. Austin (Virginia, 1876-1895), two works, "Sailboat on Shore" signed, dated "1873" lower right; "Sailboats in Harbor" signed, dated lower left "1873", oil on canvas. Sight size: approximately 3 3/4" high, 5 3/4" wide. Frame size: 8" high 10" wide. 700.00 - 800.00



LOT

70 Ernest Tino Trova, Silkscreen

Ernest Tino Trova (Am.1927-2009), print four from Falling Man Manscapes Portfolio, 1969, one of ten prints from an edition of 175. Silkscreen unsigned, Pace Gallery, Columbus, Ohio label verso. Sight size: 22 1/2" high, 22 1/2" wide. Frame size: 28 1/2" high, 28 1/4" wide. Condition: mat toning, lacking glass. 100.00 - 200.00

**71 Guy Arnoux "Les Vins de Bourgogne" Poster**

Guy Arnoux (French, 1886-1951), "Les Vins de Bourgogne" original poster printed in Paris by Imprimerie Devambez and signed in plate. Framed, not examined out of frame. Sight size: 46 1/4" high, 30 1/4" wide. Frame size: 50 1/2" high, 34 1/4" wide. Condition: toning, several small spots. 600.00 - 800.00

**72 Edward Loyal Field "New England Landscape" O/C**

Edward Loyal Field (New York, 1856-1914) "New England Landscape" oil on canvas, signed lower right. Sight size: 19 1/2" high, 29 1/2" wide. Frame size: 23" high, 32 1/2" wide. Condition: crazing, small loss lower left corner and lower left edge. Restored area left middle edge approximately 2" high, 3 1/4" wide, middle right center area approximately 2 1/4" high, 3 1/2" wide middle right edge area approximately 2 1/2" high, 3" wide. 1,500.00 - 2,500.00

**73 Emile Finot "Les Waltons Marionettes" Poster**

Emile Finot (French, b. 1910), "Les Waltons Marionettes" original poster, in image lower right "Litho Finot 40 Rue Des Marais, Paris Imprime Par Choppy". Framed, not examined out of frame. Sight size 60 3/4" high, 45 1/2" wide. Frame size: 64 3/4" high, 49 1/4" wide. Condition: toning, a few small creases. 300.00 - 500.00



April Connecticut Fine Estates Auction 4/26/2015

LOT #**74 David Hardy "Feeding the Goat" O/P**

David Hardy (English, active 1855-1870), "Feeding the Goat" oil on panel, signed, titled on verso, in original frame. Sight size: 9" high, 7" wide. Frame size: 17 1/4" high, 15" wide. Condition: small area of loss to gilt frame. 700.00 - 900.00

**75 American School, 20th C. "Joyful Woman" W/P**

American School, 20th century "Joyful Woman" watercolor, pencil on paper, titled, signed indistinctly in pencil J.W.? Framed, not examined out of frame. Sight size: 16 1/4" high, 20" wide. Frame size: 21" high, 24" wide. 300.00 - 500.00

**76 Lilian J. Whish "Amber & Marigolds" O/C**

Lilian J. Whish (American, 1868-1934), "Amber and Marigolds", oil on canvas, signed lower right; signed, titled, dated 1978 verso on stretcher. Sight size: 29 1/2" high, 35 1/2" wide. Frame size: 36" high, 41 1/2" wide. Condition: very small area of paint loss middle right edge. 200.00 - 250.00

**77 Harry McCormack "Art Deco Lobby" Print**

Harry McCormick (American, born 1942), "Pierre Lobby", giclee print, signed, numbered verso 2/100. Sight size: 23 1/2" high, 29 1/4" wide. Frame size: 28 1/2" high, 35" wide. 300.00 - 500.00

**78 Cecil Vezin Grant "Winter Landscape" O/C**

Cecil Vezin Grant (American, b. 1880), "Winter Landscape" oil on canvas, signed lower left "C.V. Grant". Sight size: 19 1/4" high, 23 1/4" wide. Frame size: 24" high, 27 3/4" wide. Condition: a few small spots. 300.00 - 500.00

**LOT #****79 Dutch School "Village Canal" O/C**

Dutch school "Village Canal" oil on panel, signed indistinctly lower left, legend verso "Amsterdam Holland 1883". Sight size: 6" high, 7 3/4" wide. Frame size: 12 1/2" high, 14" wide. Condition: slight corner wear, frame rubs lower edge. 500.00 - 700.00

**80 C.Torchon "Haitian Landscape" w/Two Watercolors**

Camille Torchon (Haitian, b. 1953), "Haitian Landscape" oil on canvas, signed lower right. Galerie Marassa Label verso. Together with two Haitian watercolors signed illegibly lower right. Framed, not examined out of frames. Sight size: 8 1/8" high, 11" wide to 19 1/2" high, 23 3/4" wide. Frame size: 12 1/2" high, 15 1/2" wide to 25 1/4" high, 29 1/4" high. 200.00 - 300.00

**81 Continental School, 20th C., "Nude Study" P/P**

Continental School, 20th century, "Nude Study" pencil on paper signed indistinctly upper right Ha'zy ?Ona. Framed, not examined out of frame. Sight size: 11 1/4" high, 8 1/4" wide. Frame size: 18 1/2" high, 16" wide. Condition: toning. 200.00 - 400.00

**82 Continental School 19th C. "Harbor Scene" O/C**

Continental school, 19th century, "Harbor Scene" oil on canvas, unsigned. Sight size: 19 3/4" high, 33 3/4" wide. Frame size: 23" high, 36 3/4" wide. Condition: crazing, restoration, scattered small spots, a few tiny losses. 600.00 - 800.00

**83 Will Barnet "Ariadne" Color Lithograph**

Will Barnet (American, 1911-2012), "Ariadne" 1980, holiday edition signed in pencil "Will Barnet". Framed, not examined out of frame. Frame size: 8 1/2" high, 8 1/2" wide. Provenance: gift from the artist to William Jay Smith, poet. 200.00 - 300.00



April Connecticut Fine Estates Auction 4/26/2015

LOT

84 Gerson Lieber "The Riding Public" Etching

Gerson Leiber (NY, b. 1921), "The Riding Public" etching, numbered, signed, dated in pencil "A.P. Leiber '69 IMP." together with a photomechanical reproduction of a Venetian etching, numbered, titled, signed, dated 97/177 "Pulcinella D'Acopo Beuffel 86". Both framed, not examined out of frames. Sight size: 26 1/2" high, 18 1/2" wide to 22" high, 28" wide. Frame size: 28" high, 20" wide to 28 1/2" high, 34 1/2" wide. 200.00 - 300.00

**85 Cecil Collins "Court Jester w/Owl & Heart" Etching**

Cecil Collins (English, 1908-1989), "Court Jester with Owl and Heart" edition #30/30, signed in pencil and dated 1944. Framed, not examined out of frame. Frame size: 12" high, 16" wide. Provenance: gift from the artist to poet William J. Smith. Condition: a few tiny spots, paper slightly crumpled. 600.00 - 800.00

**86 Large Framed "Leopard" O/C**

"Leopard" oil on canvas, unsigned. Sight size: 23" high, 35" wide. Frame size: 34 1/2" high, 46" wide. 200.00 - 300.00

**87 Laurence Biddle, Two Still Life Paintings/Panel**

Laurence Biddle (English, 1888-1968) two still life paintings "No. 6 Pansy, Wallflower and Forget-Me-Nots", "No. 9 Little Flower Piece" oil on panels, both signed lower left and right Lawrence Biddle, one dated '33. Framed, not examined out of frames. Sight size: 6 1/2" high, 11" wide. Frame size: 13 1/2" high, 18 1/2" wide. In original silver leaf art deco frames. 2,000.00 - 2,500.00



LOT

88 John Mecray "The First Defense" Sailing Print

John Mecray (American, 20th century), "The First Defense" official limited edition print after the painting for the 23rd defense of the America's Cup in 1983, inscribed, numbered and signed in pencil "Artists' proof 15/50". Framed, not examined out of frame. Sight size: 18" high, 29 3/4" wide. Frame size: 26 1/2" high, 38 1/2" wide. Condition: paper with wavy border at top center. 100.00 - 200.00

**89 Richard Merkin "Was It a Cat I Saw?" Lithograph**

Richard Merkin (American, 1938-2009), "Was It a Cat I Saw?" lithograph, numbered, signed in pencil lower left "313/500 Merkin". Framed, not examined out of frame. Sight size: 20" high, 26" wide. Frame size: 30" high, 35" wide. 100.00 - 200.00

**90 Richard Bassett "Ruins" O/C**

Richard Bassett (American, 1900-1995), "Ruins" oil on canvas, signed lower right. Sight size: 24 1/2" high, 27 3/4" wide. Frame size: 31" high, 33 1/2" wide. Condition: small loss upper left between second and third column, a few small stains upper right border. 700.00 - 900.00

**91 Paul Pacey "Abstract" Oil On Masonite**

Paul Pacey (20th century) "Abstract" oil on masonite, signed L.R. Panel: 24 1/2" high, 24 1/2" wide. Frame size: 32 1/2" high, 32 1/4" wide. 200.00 - 400.00

**92 Woody Jackson Silk Screen/2 War Propaganda Posters**

Three artworks comprising Woody Jackson (American, 20th century), "Cornwall Cream" silkscreen titled, numbered, signed in pencil 33/45 together with two war posters comprising "The Comforter" by Gordon Grant, and "Hold Up Your End" by W. B. King. Framed, not examined out of frames. Sight size: 17" high, 20 3/4" wide to 27 1/2" high, 20" wide. Frame size: 23 1/2" high, 27 1/4" wide to 30" high, 20" wide. Condition: tears, stains, losses, mat



April Connecticut Fine Estates Auction 4/26/2015

LOT #

toning. 200.00 - 300.00

93 Group of Four Decorative Exotic Cat Prints

Group of four decorative exotic cat prints.

Framed, not examined out of frame. Sight size:

6 1/4" high, 9 3/4" wide. Frame size: 12 1/4"

high, 16 1/4" wide. 100.00 - 200.00

**94 Phillippe Henri Noyer "Woman w/Cub" Lithograph**

Phillippe Henri Noyer (French, 1917-1985)

"Woman With Cub" lithograph, numbered, signed in pencil 54/225. Framed, not examined out of frame. Sight size: 17 1/2" high, 32" wide.

Frame size: 25" high, 39 1/2" wide. Condition: border foxing, light toning. 100.00 - 200.00

**95 After C. R. Patterson "The Glory of the Seas"**

After Charles Robert Patterson (American, 1878-1958), "The Glory of the Seas" lithograph.

Framed, not examined out of frame. Sight size:

13" high, 16 1/2" wide. Frame size: 22" high,

25 1/2" wide. 100.00 - 200.00

**96 Mahlon Blaine "The Decameron of Boccaccio"**

Mahlon Blaine (American, 1894-1969), "The Decameron of Boccaccio" (illustration for the Bibliophilist Society) Volume 2, P. 34, initialed lower right. Framed, not examined out of frame.

Sight size: 15 1/4" high, 9 1/2" wide. Frame

size: 20 1/2" high, 14 1/2" wide. 200.00 -

300.00

**97 "Tech Beer-Too Good to Forget" Advertising Sign**

After Henry Hintermeister (American, 1897-1972), "Tech Beer-Too Good To Forget" lithographed tin advertising sign for the

Pittsburgh Brewing Company 18 1/2" high, 26 1/2" wide. Condition: rust, scratches, dent at

top. 50.00 - 100.00

**LOT #****98 American School 20th C. "Mountain Landscape" O/M**

American School, 20th century "Mountain

Landscape" oil on masonite, signed illegibly

lower right "T.Bur__ws. Sight size: 11 1/2"

high, 15" wide. Frame size: 16 1/2" high, 19

3/4" wide. Condition: losses to signature, lower

left corner. 200.00 - 300.00

**99 Sheridan Oman "Whitetail Fawn" Etching**

Sheridan Oman (20th century), "Whitetail

Fawn" etching, signed in pencil lower right.

Sight size: 4 1/2" high, 6 1/4" wide. Frame size:

9" high, 11" wide. Condition: mat toning.

100.00 - 200.00

**100 Violet Oakley "Portrait Of A Gentleman" Pastel**

Violet Oakley (American, 1874-1961), "Portrait of a Gentleman" pastel on paper, signed, dated

lower right 1938. Framed, not examined out of

frame. Sight size: 18 1/2" high, 12 1/4" wide.

Frame size: 29" high, 21 3/4" wide. 1,000.00 -

1,500.00

**101 Egisto Ferroni "Musicians" Two O/C**

Egisto Ferroni (Italian, 1835-1912),

"Musicians" two oils on canvas, both signed,

lower left and right "E. Ferroni". Sight size:

approximately 31 1/2" high, 13" wide.

Condition: soiling, crazing, losses. 400.00 -

500.00

**102 Connecticut Impressionistic Landscape O/B**

Connecticut impressionist school, "Barn and

Pond" oil on canvas board, unsigned. Sight size:

15 1/4" high, 19 1/4" wide. Frame size: 19 1/4"

high, 23 1/4" wide. 200.00 - 400.00



April Connecticut Fine Estates Auction 4/26/2015

LOT #**103 J.T. Arms "Tower of Church of Notre Dame Avignon"**

John Taylor Arms (American, 1887-1953), "Tower of the Church of Notre Dame Avignon" etching, signed, numbered, inscribed "This beautiful impression on early 19th century French paper is dedicated to my pal, John", numbered, signed, dated "III 1938". Framed, not examined out of frame. Sight size: 5 1/2" high, 4" wide, frame size: 9 1/4" high, 7 5/8" wide. Condition: a few faint small spots. 200.00 - 300.00

**104 Emma T. Meehan "New York Skyline" O/M**

Emma T. Meehan, "New York Skyline" oil on masonite, signed lower right, title and address verso. Sight size: 15" high, 30" wide. Frame size: 15 1/2" high, 30 1/2" wide. Condition: visible nailheads at edges, mold verso. 100.00 - 200.00

**105 Possibly Haitian School "Woman & Child" W/C**

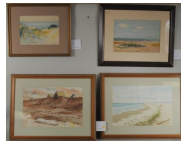
Possibly Haitian School, 20th century "Woman and Child" watercolor and gouache on paper, signed indistinctly lower left. Framed, not examined out of frame. Sight size: 21 3/4" high, 16 1/2" wide. Frame size: 31" high, 25" wide. 100.00 - 200.00

**106 Karl Eugene Fortess "Landscape" Charcoal/Ink**

Karl Eugene Fortess (American, 1907-1993), "Landscape" charcoal, ink on paper, initialed lower right. Framed, not examined out of frame. Sight size: 15 1/2" high, 19 3/4" wide. Frame size: 18 1/2" high, 22 3/4" wide. Condition: small scattered spots. 200.00 - 400.00

**107 Four Watercolors - Two Nantucket, B. Carpenter**

Four watercolors of Nantucket, two by Bernard Carpenter (American, 1890-1970), one signed lower right, the second with artists' information verso and two unsigned watercolors. Framed, not examined out of frames. Sight size: 8 1/2" high, 12" wide to 12 1/4" high, 18 1/2" wide. Frame size: 16" high, 19 1/4" wide to 20 1/2" high, 26 1/2" wide. Condition: slight toning,

**LOT #**

foxing to Carpenter watercolors. 200.00 - 300.00

108 Georges Braque "Male Figure" Ink & W/C

Georges Braque (French 1882-1963), "Male Figure" ink and watercolor on paper signed lower right. "G. Braque". Framed, not examined out of frame. Sight size: 10 1/2" high, 7 7/8" wide. Frame size: 18 1/4" high, 15 5/8" wide. Christies tag verso "Lipschultz Chubb 34". Condition: scattered light stains to paper, two light scratches to right of left arm. 1,500.00 - 2,500.00

**109 Rauschenberg "John Paul Jones Has Plenty" M/M**

Robert Rauschenberg (American, 1925-2008), "John Paul Jones Has Plenty" mixed media on paper, signed lower right "Rauschenberg", framed, not examined out of frame. Sight size: 13" high, 10 1/4" wide. Frame size: 15 1/4" high, 12 1/4" wide. 1,000.00 - 2,000.00

**110 Wayne Owen "Temple Dance" Mixed Media**

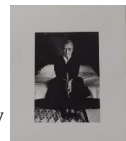
W. Owen, (20th century), "Temple Dance" mixed media, signed, dated lower right "W. Owen '65". Sheet size: 27 3/4" high, 22" wide. Frame size: 35" high, 29" wide. Condition: lacking glass. 200.00 - 400.00

**111 Two Paintings By James P. Feriola O/C**

James P. Feriola, AWS (American, 1925-1988), two similar winter scenes comprising "The Red House" and "Untitled" oil on canvas, both signed lower left and right. Sight size: 6 1/2" high, 8 1/2" wide. Frame size: 10 1/4" high, 12 1/4" wide. 300.00 - 400.00

**112 John Loengard, Photograph Georgia O'Keeffe**

John Loengard (Am. 1934 -), photograph of "Georgia O'Keeffe sitting on bed". Photographic print for Life and Time, Inc., verso with stamped reproduction rights and "Photograph by John Loengard". Sheet size: 13 1/8" high, 10 3/8" wide. Condition: several small scratches in dress and bed in and around hip area, small scuffs and scratches in white margin, tape



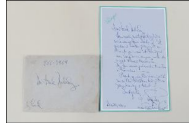
April Connecticut Fine Estates Auction 4/26/2015

LOT #

residue verso. 500.00 - 700.00

113 Ginger Rogers Letter/Envelope 1966

Ginger Rogers handwritten letter dated 1966 to Jack Melady thanking him for his harp recording, with envelope. Sheet: 8 1/4" high, 5 3/8" wide. 100.00 - 200.00



114 Two Vintage Sterling Silver Pins

Two vintage sterling silver pins comprising a Mexican moth pin by Victoria (Victoria Ana Nunez de Brilanti) and a 1920's English sterling "Crinoline" pin stamped "England Sterling PT 202 213 PGS. 7/8" wide, 1 1/8" long to 1 3/8" wide, 1 5/8" long. Moth pin: .365 OZT. 200.00 - 300.00



115 Camera Group, Pentax/MG Workshop Manual

Honeywell Pentax Spotmatic camera, three lenses, an MG Workshop Manual and other items. 3" high, 2 3/4" diameter to 11" high, 8" wide. Condition: use wear, stains, soiling. 100.00 - 200.00



116 Katherine Hepburn Letter 1943

Two vintage sterling silver pins comprising a Mexican moth pin by Victoria (Victoria Ana Nunez de Brilanti) and a 1920's English sterling "Crinoline" pin stamped "England Sterling PT 202 213 PGS. 7/8" wide, 1 1/8" long to 1 3/8" wide, 1 5/8" long. Moth pin: .365 OZT. 300.00 - 400.00



117 Marble Ball/Stand & Faux Marbleized Obelisk

Marble ball on brass stand and faux marbleized wood obelisk. 7" high, 4 3/4" wide to 21 1/2" high, 5 1/2" wide. Condition: small paint losses. 200.00 - 300.00



LOT #

118 John Loengard, Photograph Georgia O'Keefe

John Loengard (Am. 1934 -), photograph of Georgia O'Keefe on the roof of her Ghost Ranch home. Photographic print for Time, Inc., verso with stamped reproduction rights and "Photograph by John Loengard". Sight size: 7 1/8" high, 11 1/2" wide. Sheet size: 10 3/4" high, 14" wide. Condition: several small scratches, scuffs, areas of residue in sky, taped to mat at top. 300.00 - 500.00



119 American School "Woman In Red Heels" Sculpture

American School, 20th century "Woman in Red Heels" carved mahogany sculpture, incised initials on base "RB" on revolving pedestal. Sculpture: 27" high, 8 3/4" wide. Pedestal: 30 1/2" high, 11 wide, 11" deep. Condition: crack to side, round scuff to shirt hem, scuffs, chips, finish loss to base edges. 400.00 - 600.00



120 Jack Dempsey Autographed Menus & Photo

Two Jack Dempsey signed menus to Jackie Melady and Buddsie Melady, together with a souvenir photo, three items total. 6 1/2" high, 8 1/2" wide to 10" high, 14 1/4" high. Condition: one menu with small tear to lower edge and tape residue, the other light soiling. 200.00 - 300.00



121 John Loengard, Photograph Georgia O'Keefe

John Loengard (American 1934 -), photo of Georgia O'Keefe "Walk At Sunrise", (photo of Georgia O'Keefe and her Chow), original photographic print for Time, Inc., verso with stamped reproduction rights and "Photograph by John Loengard". Sight size: 6 7/8" high, 10 3/4" wide. Sheet size: 10 5/8" high, 14" wide. Condition: taped to mat at top, toning to back, a couple light creases. 300.00 - 500.00



April Connecticut Fine Estates Auction 4/26/2015

LOT #**122 Possibly Native American Carved Wood Ladle**

Possibly Native American carved wood ladle with notched hook at top. 12 1/8" long, 5 1/8" wide. 300.00 - 400.00

**123 Inuit Stone Carving Of Bird**

Inuit stone carving of a bird inscribed on base L.S.? 217391. 5 1/4" high, 7 1/4" long. Condition: small chips. 100.00 - 200.00

**124 Large Inuit Stone Carving Of Man w/Fish**

Large Inuit stone carving of man with fish. 8 1/4" high, 10 1/4" long. Condition: chips, scratches. 200.00 - 400.00

**125 Vintage Carved Wood Halibut Hook**

Vintage carved wood halibut hook in the form of a man wearing an animal skin. 10 3/4" high, 5" wide. Condition: stains, wear, small losses. 200.00 - 300.00

**126 Group Early Inuit Ivory Wood & Bone Tools**

Group of early Inuit ivory wood and bone tools including four adze handles and a knife handle from the Brevig Mission area, two awls, two drum handles, a toggle, harpoon head and other items in a wood case. 3 3/4" long, 1 1/4" wide to 9 3/4" long, 2" wide. Condition: wear, age cracks, losses. International clients are ineligible to bid on this item. It is for sale only within the United States except not to CA, NY, NJ. It is the responsibility of the buyer to obtain any necessary documentation, permits or paperwork necessary including but not limited to such documents as required to comply with any and all requirements and restrictions imposed by Federal trade regulations related to endangered species prior to finalization of any sale. 400.00 - 500.00

**LOT #****127 Vintage Inuit Stone Carving of Walrus**

Vintage Inuit stone carving of a walrus with ivory tusks, unsigned. 11" long, 5" wide. Condition: dings, scratches, one possibly replaced tusk. International clients are ineligible to bid on this item. It is for sale only within the United States except not to CA, NY, NJ. It is the responsibility of the buyer to obtain any necessary documentation, permits or paperwork necessary including but not limited to such documents as required to comply with any and all requirements and restrictions imposed by Federal trade regulations related to endangered species prior to finalization of any sale. 300.00 - 400.00

**128 Vintage Inuit Green Stone Fisherman Carving**

Vintage Inuit green stone carving of fisherman with his catch, incised symbols and number on base C8054406. 9 1/2" high, 5 3/4" wide. 200.00 - 300.00

**129 Dogon Ladder Mali**

Dogon ladder, Mali, used in Dogon villages to climb to the flat roof of a home which was used for storage, living and sleeping, on iron display stand. 74" high, 6" wide. Condition: wear from exposure to elements, age cracks, losses.

1,000.00 - 2,000.00

**130 Two Inuit Fossilized Runners**

Two Inuit fossilized walrus ivory runners used to move kayaks over ice and snow, from the Brevig Mission area. 8 3/4" long 2 1/2" wide to 10 1/2" long, 1 3/4" wide. Condition: wear and losses consistent with age. International clients are ineligible to bid on this item. It is for sale only within the United States except not to CA, NY, NJ. It is the responsibility of the buyer to obtain any necessary documentation, permits or paperwork necessary including but not limited to such documents as required to comply with any and all requirements and restrictions imposed by Federal trade regulations related to endangered species prior to finalization of any sale. 200.00 - 400.00



April Connecticut Fine Estates Auction 4/26/2015

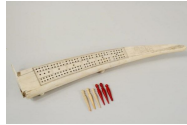
LOT #**131 Inuit/Thule/Dorset Tool Collection**

Twenty-six early Inuit, Thule and Dorset ivory and bone tools, some with incised decoration including a net float, bolo weight, ivory fid, net needles, harpoon parts, labret, fish hook and other artifacts, some from the Brevig Mission area, in wood case. 1 1/2" long, 7/8" wide to 7" long, 1 1/4" wide. Condition: wear, age cracks, losses consistent with age. International clients are ineligible to bid on this item. It is for sale only within the United States except not to CA, NY, NJ. It is the responsibility of the buyer to obtain any necessary documentation, permits or paperwork necessary including but not limited to such documents as required to comply with any and all requirements and restrictions imposed by Federal trade regulations related to endangered species prior to finalization of any sale.

400.00 - 600.00

**132 Scrimshaw Walrus Tusk Cribbage Board**

Scrimshaw walrus tusk cribbage board with image of schooner at sea, containing six pegs. 12" long, 2 1/4" wide. Condition: Age cracks, soiling, one possibly replaced foot, one replaced peg. International clients are ineligible to bid on this item. It is for sale only within the United States except not to CA, NY, NJ. It is the responsibility of the buyer to obtain any necessary documentation, permits or paperwork necessary including but not limited to such documents as required to comply with any and all requirements and restrictions imposed by Federal trade regulations related to endangered species prior to finalization of any sale. 200.00 - 400.00

**133 Inuit Scrimshaw Seal Cribbage Board**

Vintage Inuit scrimshaw seal form walrus tusk cribbage board with baleen inlaid eyes. 11 1/2" long, 1 3/4" wide. Condition: age cracks. International clients are ineligible to bid on this item. It is for sale only within the United States except not to CA, NY, NJ. It is the responsibility of the buyer to obtain any necessary documentation, permits or paperwork necessary including but not limited to such documents as required to comply with any and

**LOT #**

all requirements and restrictions imposed by Federal trade regulations related to endangered species prior to finalization of any sale. 200.00 - 400.00

134 New Guinea Carved Wood Female Figure On Stand

New Guinea carved wood female figure on display stand. 32 1/2" high, 8 1/2" wide. Condition: age cracks. 400.00 - 600.00

**135 NW Coast Marine Ivory & Abalone Dagger**

Contemporary Northwest coast dagger having a carved marine ivory and abalone bear form pommel with a leather wrapped handle. 10 3/8" long, 1 3/4" wide. International clients are ineligible to bid on this item. It is for sale only within the United States except not to CA, NY, NJ. It is the responsibility of the buyer to obtain any necessary documentation, permits or paperwork necessary including but not limited to such documents as required to comply with any and all requirements and restrictions imposed by Federal trade regulations related to endangered species prior to finalization of any sale. 600.00 - 700.00

**136 Two Inuit Seal Skin Toys**

Two Inuit seal skin toys including one with ivory bird pendant. Seals approximately 4 3/4" long, 1 7/8" wide. Approximate total length: 39" long. International clients are ineligible to bid on this item. It is for sale only within the United States except not to CA, NY, NJ. It is the responsibility of the buyer to obtain any necessary documentation, permits or paperwork necessary including but not limited to such documents as required to comply with any and all requirements and restrictions imposed by Federal trade regulations related to endangered species prior to finalization of any sale. 200.00 - 300.00



April Connecticut Fine Estates Auction 4/26/2015

LOT #**137 Inuit Carved Fossil Ivory Revolver Grips, 36 S&W**

Pair of Inuit carved fossil ivory revolver grips for a Model 36 Smith & Wesson pistol depicting polar bears, both signed "Joe Menaug Pungowiyi 1-93". 3 1/4" long, 1 1/4" wide. International clients are ineligible to bid on this item. It is for sale only within the United States except not to CA, NY, NJ. It is the responsibility of the buyer to obtain any necessary documentation, permits or paperwork necessary including but not limited to such documents as required to comply with any and all requirements and restrictions imposed by Federal trade regulations related to endangered species prior to finalization of any sale. 500.00 - 600.00

**138 Fiji Carved Wood Tonga Throwing Club**

Fiji carved wood Tonga throwing club. Remains of old collection label on handle. 16" long, 3 1/2" wide. 500.00 - 700.00

**139 Three Inuit Tools**

Three early bone or ivory Inuit tools comprising two ulu knives and a harpoon point in Riker case 6 1/4" long, 1 5/8" wide to 4" high, 7 1/4" wide. Condition: wear, rust, stiff leather, cracked blade. International clients are ineligible to bid on this item. It is for sale only within the United States except not to CA, NY, NJ. It is the responsibility of the buyer to obtain any necessary documentation, permits or paperwork necessary including but not limited to such documents as required to comply with any and all requirements and restrictions imposed by Federal trade regulations related to endangered species prior to finalization of any sale. 200.00 - 300.00

**LOT #****140 Fossilized Whalebone Vertebra Disc**

Fossilized whalebone vertebra disc. 7" diameter. 200.00 - 300.00

**141 Large Inuit Stone Carving Of Bird**

Large Inuit stone carving of bird with tag on base stating carver Levi. 9" high, 10 1/2" long. Condition: scratches. 200.00 - 400.00

**142 Five Early Inuit Bone Tools**

Five early Inuit bone tools comprising: three snow knives and two adzes from the Brevig Mission area. 6 1/4" long, 4 1/4" wide to 9 5/8" long, 2 3/8" wide. Condition: adze with slate blade: handle and blade not found together, wear, age cracks, losses. 300.00 - 400.00

**143 African Senufu Rythym Pounder**

African Senufu rythym pounder, carved wood figure. 30" high, 10" wide. Condition: age cracks, losses. 300.00 - 500.00

**144 Three Inuit Fossilized Hunting Tools**

Three Inuit fossilized hunting tools comprising a whale harpoon head holder found seven villages down at Kokolik and two harpoon tips. 6" long, 1 1/4" wide to 9 3/4" long, 7/8" wide. Condition: wear commensurate with age, exposure to elements. 400.00 - 500.00

**145 Horn/Wood Container, Possibly Pacific Islands**

Horn and wood container, possibly Pacific Islands, in the form of a horse with a scorpion, snake and centipede decoration. 6" high, 18 1/2" long. 200.00 - 300.00



April Connecticut Fine Estates Auction 4/26/2015

LOT #**146 African Carved Wood Katapult**

African carved wood katapult depicting a human figure on display stand. Figure: 14 1/2" high, 2 3/4" wide. Condition: age cracks, scratches, chips, finish wear, loss. 200.00 - 300.00

**147 Henry Napartuck Signed Print**

Henry Napartuck, Inuit (1932-1985), "Eskimo Woman Fishing" print, signed, titled in pencil, framed, not examined out of frame. Sheet size: 6 1/2" high, 9 1/2" wide. Frame size: 10 1/2" high, 13 1/2" wide. Condition: stains along lower edge, foxing. 100.00 - 200.00

**148 Two Inuit Stone Carvings, Bird & Man/Fish**

Two Inuit stone carvings comprising a green stone bird incised number on base 334263? and a man with fish incised on base "Mo Susie 10505". 4" high, 7" long to 6 1/2" high 4 1/2" wide. Condition: man with chips, scratches. 100.00 - 200.00

**149 African Carved Wood Four Legged Chalice**

African carved wood four legged chalice bowl. 8" high, 4 1/4" wide. Condition: age cracks, loss to one foot, stains, wobbly. 200.00 - 300.00

**150 Large Inuit Stone Female Portrait Carving**

Large Inuit stone female portrait carving. 10" high, 6 1/2" wide. 300.00 - 500.00

**151 Caledonian Kanak Carved Wood Bird Head Club**

Caledonian Kanak carved wood bird head club on metal display stand. Club 31 1/2" high, 13 1/2" wide. Provenance: French collection. Condition: cracks, two losses to end of beak. 2,500.00 - 3,500.00

**LOT #****152 Northwest Coast Carved Bentwood Box**

Northwest Coast carved bentwood box, of pegged construction, sides depicting various animals, rim with marine ivory or bone inlay. 7 1/2" high, 13 1/2" long. Likely late 19th century. Provenance: Barry Hickman Collection. Condition: finish wear, loss, small chips, losses. International clients are ineligible to bid on this item. It is for sale only within the United States except not to CA, NY, NJ. It is the responsibility of the buyer to obtain any necessary documentation, permits or paperwork necessary including but not limited to such documents as required to comply with any and all requirements and restrictions imposed by Federal trade regulations related to endangered species prior to finalization of any sale. 2,500.00 - 3,500.00

**153 Cameroon Wood Carved Mask of King & Son**

Cameroon carved wood mask of king and son. 21" long, 9" wide. Condition: worm damage, water stains, finish wear, losses. 100.00 - 200.00

**154 African Carved Wood Axe Form Club**

African carved wood axe form club. 52" long, 11 1/2" wide. Condition: chips, losses to points. 300.00 - 500.00

**155 Four Inuit Carved Hardstone Sculptures**

Four Inuit carved hardstone sculptures comprising a seal and two walrus, one signed Ekemo, a bird together with a wood shore bird. 1 3/4" high, 3 1/2" long to 2 1/2" high, 10" long. Condition: wear, loss to shore bird. 100.00 - 200.00



April Connecticut Fine Estates Auction 4/26/2015

LOT #**156 Indian Repousse Brass Shield**

Indian repousse brass shield depicting lions and three deities. 20" diameter. 400.00 - 600.00

**157 Large Inuit Carved Stone Portrait Carving**

Large Inuit carved stone portrait carving incised on base E91548. 8 1/2" high, 7 1/2" wide. Condition: chips, scratches. 200.00 - 400.00

**158 Inuit Carved Stone Portrait Of Child**

Inuit carved stone portrait of child in parka hood signed on base Cool? 882. 7 1/2" high, 5 1/2" wide. Condition: small chips. 200.00 - 300.00

**159 Indonesian Carved Wood Shield & African Stool**

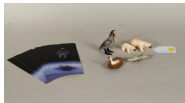
Indonesian carved wood shield from the Irian Java area, together with an African stool. 13 1/4" high, 12 1/2" wide to 44 1/4" high, 23" wide. Condition: stool with finish wear, loss, age cracks, chips, losses. 200.00 - 300.00

**160 Pair Terracotta Busts "African Couple"**

Pair of terracotta busts, "African Couple" one polychromed, both initialed, one dated on verso FO 1965. 12" high, 5 1/4" wide to 14" high, 6" wide. Condition: polychrome wear, loss, woman with chips, losses to collar. 100.00 - 200.00

**161 Four Inuit Carved Walrus Ivory Animals**

Four Inuit carved walrus ivory animals, comprising a scrimshaw bird, two polar bears and swan together with a hardstone salmon tie tac. 1 1/2" high, 2 1/4" long to 3" high, 2" wide. International clients are ineligible to bid on this item. It is for sale only within the United States except not to CA, NY, NJ. It is the responsibility of the buyer to obtain any necessary documentation, permits or paperwork necessary including but not limited to such documents as required to comply with any and all requirements and restrictions imposed by

**LOT #**

Federal trade regulations related to endangered species prior to finalization of any sale. 200.00 - 400.00

162 Large Inuit Green Stone Carving of Seated Man

Large Inuit green stone carving of seated man, incised with cryptic signature 1974. 11 1/2" high, 8" wide. 300.00 - 500.00

**163 Mexican Carved & Gilded Altar Ornament**

Mexican carved and gilded altar ornament with painted face, gilt robes. 24 1/2" high, 8" wide. Condition: age cracks, paint wear, loss, repaint. 100.00 - 200.00

**164 Three Chinese Enameled Porcelain Jars, One As Lamp**

Three Chinese enameled porcelain jars, one as lamp. 8 1/2" high, 8" diameter to 13" high, 7 1/2" diameter. Condition: enamel wear, loss, rim chips, one lid lacking finial. 200.00 - 300.00

**165 Large Japanese Bronze Temple Bell**

Large Japanese bronze temple bell with four panels of sixteen studs. Provenance: Patricia Frazier estate. 23" high, 13" wide. Condition: wear from exposure to elements. 1,000.00 - 2,000.00

**166 Asian Patinated Bronze Duck**

Asian patinated bronze duck. 10" high, 15" long. Condition: loss to tail, bottoms of feet. 400.00 - 600.00

**167 Four Chinese Porcelain Rose Medallion Serving Pcs.**

Four Chinese porcelain rose medallion serving pieces, comprising a reticulated plate, creamer, gravy boat and oval bowl. 3 1/4" high, 4 1/4" wide to 8 3/8" high, 10 3/4" wide. 400.00 - 600.00



April Connecticut Fine Estates Auction 4/26/2015

LOT #

168 Burmese Bronze Buddha Figure

Burmese bronze Buddha figure on custom stand, with traces of original polychrome decoration. Figure 30 1/2" high, 18 1/2" wide. Condition: polychrome wear, loss. 500.00 - 700.00



169 Chinese Bronze Mirror with Phoenix & Kylin

Chinese bronze mirror with relief of phoenix and Kylin among foliage enclosed by similar border of birds, butterflies and flowers within a scalloped rim, together with sales receipt from Hadassa Antiques Gallery, 1050 2nd Ave. NYC. 9 3/4" diameter. 400.00 - 600.00



170 Two Chinese Paintings Depicting Acts Of Torture

Two Chinese paintings depicting acts of torture, unsigned, framed, not examined out of frames. Sight size: approximately 12 1/4" high, 15 1/4" wide. Frame size: approximately 16 1/2" high, 19 1/2" wide. Condition: scattered tiny spots, one with tear, loss upper left border, other with restored tear lower left border. 400.00 - 600.00



171 Asian Blue/White Umbrella Stand

Asian blue and white porcelain umbrella stand. 24 1/2" high, 8 3/4" wide. Condition: spider crack in base. 100.00 - 200.00



172 Asian Carved Wood Parcel Gilt Dragon Ornament

Large Asian carved wood parcel gilt dragon architectural ornament. 9" high, 32" long. Condition: wear from exposure to elements, paint, gilt wear, loss, age cracks, cracks, losses. 200.00 - 300.00



LOT #

173 Asian Carved Stone Quan Yin On Lotus Form Base

Asian carved stone Quan Yin on lotus form base. 20 1/2" high, 6 1/2" wide. Condition: loss to index finger of left hand. 500.00 - 700.00



174 Carved Wood Cane, Chinese Motif

Carved wood cane with top depicting head of a Chinese scholar, mounted on a wrought iron stand. 41 1/2" high, 1 1/2" wide. Condition: age cracks, hole at top. 300.00 - 500.00



175 Three Asian Jars, As Lamps

Three Asian jars, as lamps, comprising two blue and white porcelain lamps and an oxblood lamp. Jars approximately 14 1/4" high, 7 1/2" wide to 30" high, 7" wide. Condition: one small glaze chip to one flower. 200.00 - 300.00



176 Small Japanese Bronze Temple Bell

Small Japanese bronze temple bell with four panels of nine studs, with integral lotus yoke. 16" high, 9 3/4" wide. 600.00 - 800.00



177 Asian Bronze Badger, Hardstone Goat Group, Teapot

Three Asian items comprising a bronze badger, signed on base, a carved hardstone goat group and an iron teapot signed 'Tetsubin'. 4 1/2" high, 8 1/2" wide to 10" high, 6" wide. Condition: teapot with use wear, edge losses. 300.00 - 400.00



178 Early Stone Carved Head, Possibly Asian or S.A.

Early carved stone head, possibly Asian or South American. 8" high, 6 1/2" wide. Condition: wear from exposure to elements, chips, losses. 600.00 - 800.00



April Connecticut Fine Estates Auction 4/26/2015

LOT #

179 Japanese Four Panel Painted Screen

Japanese four panel painted screen depicting various animals. 53 1/4" high, 89" wide. Condition: wear, stains, tears, losses, as is. 200.00 - 400.00



180 Seven Asian Porcelain Lamps

Seven Asian porcelain lamps including a pair of blue & white ginger jars and a pair of teapot lamps. 5" high, 4 1/2" wide to 12" high, 8" wide. Condition: glaze wear, one teapot with detached base bottom. 300.00 - 500.00



181 Pair Chinese Export Porcelain Tea Bowls & Saucers

Pair of Chinese export porcelain tea bowls and saucers. Tea bowl 2 1/4" high, 3 3/8" diameter. 100.00 - 200.00



182 Two Vintage Japanese Wedding Kimonos/Mens Hats

Two vintage Japanese wedding kimonos, four vintage men's felt hats and two original boxes including a Stetson and a Knox hat. Approximately 4 1/2" high, 11" wide to 71" long, 52" wide. Condition: soiling, wear, stains, mildew, tears to boxes. 100.00 - 200.00



183 French Empire Silver Coffee Pot

French Empire silver coffee pot with horsehead spout on paw feet. 9 3/4" high, 6 1/2" wide. Gross weight: 14.8 OZT. Condition: repairs, dings, dents, bends to legs. 200.00 - 300.00



184 Sheffield Silver Plated Wax Jack & Oval Bowl

Sheffield silver plated wax jack with two additional wax coils together with a possibly French oval silver plate bowl hallmarked PREN?. 5 1/2" high, 4 3/4" wide to 6 1/4" high, 12 5/8" wide. Condition: plate wear, loss. 200.00 - 300.00



LOT #

185 Silver Plated Wine Cooler On Stand

Silver plated wine cooler on stand manufactured by Grand Silver Co. from La Caravelle Restaurant, New York City. 32" high, 11" wide. Condition: plate wear, loss. 200.00 - 300.00



186 Gorham Sterling Silver Overlay Flask

Gorham sterling silver overlay flask with removable cup base, monogrammed, inscribed "Easter Greetings". 4 1/2" high, 3 1/2" wide. Weighable silver: 1.6 OZT. Condition: base scratches. 200.00 - 300.00



187 Large Riveted Metal Urn w/Ring Handles Now As Lamp

Large riveted metal urn with ring handles, now as lamp. 31" high, 13 1/2" wide. Condition: finish wear, loss. 300.00 - 500.00



188 Bronze Sailboat Plaque

Bronze sailboat plaque, unsigned. 12" high, 15 1/4" wide. Conditions: stains. 200.00 - 300.00



189 Antique Optical Items, "Pancoast's Surgery"

Three pair antique optical items, a pair of opera glasses, and 'Pancoasts Operative Surgery', 2nd edition with 80 plates. 3 1/4" high, 1 3/4" wide to 12 3/4" high, 10 1/2" wide. Condition: wear, losses, stains. 100.00 - 200.00



190 Group WW II Military & Nautical Items

Group of WW II military and nautical items including eleven medals, a Roth Bros. ships' clock, a Kalart Co. M2 compass and other items. 3/8" wide, 1/2" long to 16" high, 7" diameter. Condition: wear, rust, scratches, stains, losses, dents. 100.00 - 200.00



April Connecticut Fine Estates Auction 4/26/2015**LOT #****191 Vintage Oliver Typewriter, Phone & GE Fan**

A vintage "Oliver No. 9 Standard Visible Writer", patent date 1917, a vintage Scandinavian phone and a GE oscillating fan. 8 1/2" high, 10" wide to 16" high, 13" wide. Condition: use wear, soiling, rust. 100.00 - 200.00

**192 Three Brass & Iron Lanterns**

Three brass and iron lanterns including a British "MFP" brass lantern. 8 1/2" high, 4 1/2" wide to 10" high, 5 1/4" wide. Condition: wear, dents, scratches, paint wear, loss. 100.00 - 200.00

**193 Reed & Barton Silver Partial Flatware Service**

Reed & Barton sterling silver partial flatware service in the Hepplewhite pattern, some monogrammed, comprising eleven dinner forks, twelve dinner knives, eight soup spoons, ten teaspoons, eight dessert forks, twelve butter knives. 5 1/2" high, 5/8" wide to 9 3/4" high, 1" wide. Condition: use wear, scratches, edge nicks. Weighable silver 51.040 OZT 700.00 - 900.00

**194 Sheffield Plated Egyptian Style Hot Water Urn**

Sheffield plated Egyptian style hot water urn, circa 1810. 17 1/2" high, 11 1/2" wide. Condition: plate wear, loss, base repairs. 300.00 - 500.00

**195 Chinese Export Platter**

Chinese export porcelain platter, 19th century, with unusual central design of classical urn and garden structure. 11" high, 13 1/2" wide, 1 3/4" deep. Condition: gilt, enamel wear, loss, several rough spur marks. 200.00 - 400.00

**LOT #****196 Tiffany Studios Bronze Desk Set, Grapevine Pattern**

Tiffany Studios New York grapevine pattern patinated bronze desk set featuring mottled green favrile glass calendar, picture frame, notepad, two boxes, stamp box, inkwell, scale, pen tray, pen wipe, cup, monogram stamp and paper weight. 14 items total. 3 1/4" high, 1 1/2" diameter to 8" high, 9 1/2" wide. Condition: Two cracks to glass in vertical frame left side; corner loss to clear glass in calendar frame lower right; patina wear, loss to paperweight; dent to scale shoulder at back, scale tray slightly bent; rectangular and six sided box with breaks; losses to glass tops, six sided box also with detached lid, losses to one glass side panel; inkwell with dent to top, cracks to one glass side panel; notepad with detached top, bent hinge, small corner loss to wood back; blotter ends without glass, with patina wear, loss; pen holder missing top two hooks. 4,000.00 - 5,000.00

**197 Mid-Century Glass & Chrome Dining Table**

Mid-Century glass and chrome dining table, with two leaves and accompanying frame sections, having smoked glass top in a paneled frame on straight legs, extending to seat ten. 28" high, 60" long, 100" long with both leaves, 38" deep. Condition: scratches, corner wear. 400.00 - 500.00

**198 Celia T. Hubbard "Brown Cardboard Cartons" O/C**

Celia Thaxter Hubbard (American, 1920-2013) "Brown Cardboard Cartons" oil on canvas, unsigned, exhibition and artists' label verso Museum of Fine Arts Alpha Gallery (Boston) 88', also with Grogan & Co. Auction label, lot 244. Sight size: 36" high, 40 1/4" wide. Frame size: 37" high, 41" wide. Condition: a few scratches lower right corner. 400.00 - 500.00



April Connecticut Fine Estates Auction 4/26/2015

LOT #**199 Mid-Century Chrome & Lucite Table Lamp**

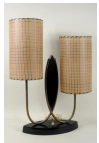
Mid-century chrome and lucite table lamp. 16" high, 8" wide, 9 1/2" deep. Condition: oxidation to chrome, a couple scratches to lucite. 100.00 - 200.00

**200 Thonet Style Adjustable Bentwood & Iron High Stool**

Thonet style adjustable bentwood and iron high stool with caned seat. 31" high, 15 3/4" wide. Condition: finish wear, losses, rust, paint residue, break to cane seat. 100.00 - 200.00

**201 1950's Modernist Painted Bakelite & Metal Lamp**

1950's modernist painted Bakelite and metal two light lamp with original shades. 23" high, 14" wide. Condition: oxidation to metal. 200.00 - 300.00

**202 Angel Ortiz (LA II) "Grand Master Sexy" Mixed Media**

Angel Ortiz (LAII) (b. 1967) "Grand Master Sexy" mixed media spray, metallic marker on board signed upper center. Sight size: 29 1/2" high, 21 1/2" wide. Frame size: 40 1/2" high, 31 1/2" wide. Angel Ortiz began a collaboration with Keith Haring at age sixteen and left high school to work for Haring. They had their first joint exhibition at Tony Shafrazi Gallery in 1982. His work can be found in museums worldwide. 700.00 - 900.00

**203 Set Four Modern "Good Form" Chairs**

Set four modern chairs, 'Good Form' aluminum, plastic and vinyl armchairs manufactured in 1972 by the General Fireproofing Co., original labels on underside. Condition: use wear. 200.00 - 300.00

**LOT #****204 Interesting Drum Form Low Table**

Interesting drum form low table. Vintage bass drum repurposed with faux marble painted top under glass, formerly electrified. 20" high, 32" diameter. 300.00 - 400.00

**205 Vintage Rabami Stole Kevi Danish Modern Desk Chair**

Vintage Rabami Stole Kevi Danish modern desk chair. 31" high, 16 3/4" wide, 14 1/4" deep. Condition: soiling, paint wear, loss, rust, paint crazing to seat and back. 100.00 - 200.00

**206 George Nelson Side Table**

George Nelson side table with teak top and ebonized wood frame. 18 3/4" high, 24" wide, 17" deep. Condition: finish wear, loss, stains to top. 200.00 - 300.00

**207 Pair Aluminum Tubular Folding Chaise Lounges**

Pair aluminum tubular folding chaise lounges. 37 1/2" high, 20 3/4" wide, 23" deep. Condition: scratches, rust, soiling, tears to covers. 100.00 - 200.00

**208 Marcel Breuer, Armchair & Ottoman**

Marcel Breuer (Hungary, 1902-1981), tubular steel and canvas armchair and ottoman, manufactured by Thonet, circa 1930. 15 1/2" high, 16 1/2" wide, 17" deep to 32 1/4" high, 18 1/2" wide, 25" deep. Condition: soiling, finish wear, loss, oxidation, rust, canvas separation on underside of chair. 700.00 - 800.00

**209 Braun SK6 or SK61 Radio-Phonograph**

Braun SK6 or SK61 radio-phonograph - aka "Snow White's Casket", designed by Dieter Rams (German, B. 1932) and Hans Gugelot (German, 1920-1965). 9 1/2" high, 23" wide. Condition: finish wear, loss, scratches, soiling, stains, player arm detached from base. 100.00 - 200.00



April Connecticut Fine Estates Auction 4/26/2015

LOT #

210 Pair 1950's Brass & Wrought Iron Candle Sconces

Pair 1950's brass & wrought iron candle sconces
18" high, 9" wide. 200.00 - 300.00



211 Pair 1960's Teakwood & Tile Table Lamps

Pair of 1960's teakwood and tile table lamps. 35
1/2" high, 5 1/4" wide. 200.00 - 400.00



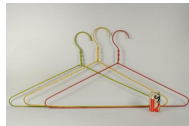
212 Harvey Probbler Dining Table

Harvey Probbler mid-century walnut dining table
with two leaves, chrome "H" form base, by
Harvey Probbler, Inc., originally purchased with
the following lot of eight chairs. 44" wide,
29.25" high, 80 1/4" long with two extra leaves,
each 16" wide. 1,500.00 - 2,000.00



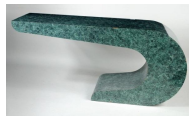
213 Group Three 1960's Coat Hanger Trade Signs

Group three 1960's coat hanger trade signs in
original red, green and yellow paint. 21 "high,
36" wide. Condition: break to red hanger at
twist, bend to yellow hanger, paint wear, loss,
rust. 300.00 - 400.00



214 Modernist Formica Faux Marble Anvil Table

Modernist Formica faux marble anvil table,
rectangular top continuing to an integral
pedestal base. 27 1/2" high, 60" wide, 18" deep.
200.00 - 300.00



215 Angel Ortiz (LA II) "Untitled" Mixed Media

Angel Ortiz (LAII) (b. 1967), "Untitled" mixed
media spray, marker on canvas, signed upper
center, lower left, written on verso "Weisberg
7-02". 22 1/4" high, 28" wide. Angel Ortiz
began a collaboration with Keith Haring at age
sixteen and left high school to work for Haring.
They had their first joint exhibition at Tony
Shafrazi Gallery in 1982. His work can be
found in museums worldwide. 600.00 - 800.00



LOT #

216 Harvey Probbler Set Eight Scissor Dining Chairs

Set of eight Harvey Probbler scissor form dining
chairs, 1950's Modernist recreation of the Sedia
a Tenaglia of the Renaissance period, with
interlaced mahogany slats with dark finish,
upholstered seat cushions, lacking hanging back
cushions. 32" high, 20" wide, 26" deep.
Condition: scuffs, scrapes, some looseness,
lacking hanging back cushions. 3,000.00 -
3,500.00



217 Pair Modern/Art Deco Metal Dome Lamps

Pair modern/art deco metal dome lamps. 13
1/2" high, 8 3/4" wide. Condition: soiling,
scattered spots, dents to shades, finish wear,
loss, rust, scratches, one with slightly bent
stem. 100.00 - 200.00



218 Pair Modern Leather Quia Chairs

Pair of modern Quia leather and metal frame
side chairs, high back narrow profile Italian
designer chairs, marked "Quia Made In Italy
Sossano VI" to the underside. 45" high, 18"
wide, 18" deep. Condition: small areas of wear.
300.00 - 500.00



219 Mid-Century Set Eight Chrome Tubular Dining Chairs

Mid-Century set of eight chrome tubular dining
chairs with vinyl backs and seats. 31 1/2" high,
20 1/4" wide, 17 3/4" deep. Condition:
oxidation to chrome, upholstery as is. 600.00 -
800.00



220 Angel Ortiz (LA II) "Untitled" Mixed Media

Angel Ortiz (LAII) (b. 1967), "Untitled" mixed
media spray, marker on board, signed lower
center, verso. Sight size: 17 3/4" high, 23 1/2"
wide. Frame size: 25 1/2" high, 35 1/2" wide.
Angel Ortiz began a collaboration with Keith
Haring at age sixteen and left high school to
work for Haring. They had their first joint
exhibition at Tony Shafrazi Gallery in 1982. His
work can be found in museums worldwide.
600.00 - 800.00



April Connecticut Fine Estates Auction 4/26/2015

LOT #

221 Modernist Five Light "Arc" Style Floor Lamp

Modern tubular enameled steel five light 'arc' floor lamp with plastic covered cement and steel stand. 92" high, 54" wide. Condition: break, loss to base corner, rust, enamel chips, scuffs, light unit partially detached from stem. 200.00 - 300.00



222 Pair Gordon Martz Pottery Table Lamps

Pair of Gordon Martz pottery table lamps, each signed Martz near cord. Base 9 1/2" high, 6" diameter. 400.00 - 600.00



223 Seeburg Jukebox Model 222

Seeburg jukebox, Model 222, 'Channel 1, Channel 2 Stereophonic Selectomatic' with illuminated grill. This was the first stereo jukebox and plays eighty 45 RPM records. 56" high, 32 1/2" wide, 27 1/4" deep. Condition: use wear, paint loss, scratches, oxidation, rust to chrome, frame separation upper right corner, in unrestored non-working condition. 1,000.00 - 1,500.00



224 Small Tole Painted Floral & Tassel Table

Small tole painted floral and tassel table with glass top. 22 1/4" high, 19 1/4" wide. Condition: rust, paint wear, loss. 100.00 - 200.00



225 Mid-Century Modernist Chrome Chandelier, 15 Lite

Mid-Century modernist chrome fifteen light chandelier. 25 3/4" high, 20 3/4" wide. Condition: oxidation to chrome. 200.00 - 300.00



LOT #

226 Kathryn Youngs "Still Life" Terracotta Sculpture

Kathryn Youngs (American, 20th century), "Still Life" glazed terracotta sculpture, signed, dated on base '90, marked on underside A138. 26 1/2" high, 21" wide. Condition: glaze chips to base. 200.00 - 300.00



227 Modernist Lithographed Metal Demilune Bar

Modernist lithographed metal demilune bar on wheels with faux grained wood finish, one interior shelf and fitted lower section for bottles. 33" high, 30" wide, 16" deep. Condition: scratches, finish wear, loss, dents to lower bar. 300.00 - 500.00



228 Harvey Probbler Credenza/Breakfront

Harvey Probbler Credenza/breakfront having two pair walnut paneled cupboard doors in darkened mahogany and brass reeded frame, three shelves in interior over two long drawers, two pair of cupboard doors below, label in drawer interior. 73 1/4" high, 71 1/2" wide, 18" deep. Condition: a few scratches, dings to base top, small dings to brass reeding at base, oxidation to pulls. 2,000.00 - 3,000.00



229 Angel Ortiz (LA II) "Untitled" Mixed Media

Angel Ortiz (LAII) (b. 1967) "Untitled" mixed media spray, metallic marker on canvas, signed upper left border. Sight size: 23 1/2" high, 19 1/2" wide. Frame size: 29 1/4" high, 24 3/4" wide. Angel Ortiz began a collaboration with Keith Haring at age sixteen and left high school to work for Haring. They had their first joint exhibition at Tony Shafrazi Gallery in 1982. His work can be found in museums worldwide. 600.00 - 800.00



April Connecticut Fine Estates Auction 4/26/2015

LOT #**230 Pair Modern Wood Armchairs with "Buckle" Seats**

Pair of modern wood armchairs with vinyl backs and "buckle" seats. 34" high, 23 3/4" wide, 19 1/2" deep. Condition: use wear, stains. 300.00 - 400.00

**231 Maitland Smith Georgian Style File Cabinet**

Maitland Smith Georgian style, two drawer filing cabinet, each drawer double faced, on a molded plinth base. 33 1/2" high, 24" wide, 24" deep. 100.00 - 200.00

**232 "Golden Orangeade" Metal Lithographed Sign**

"Golden Orangeade" metal two sided lithographed sign by J. Hungerford Smith Co., Rochester, NY. 13" high, 18 1/4" wide. Condition: paint wear, loss, wear from exposure to elements, rust, bend to mounting at top. 600.00 - 800.00

**233 Pair Modern Tubular Chrome Chairs**

Pair of modern tubular chrome chairs with leather armrests, velvet cushions. 28 1/2" high, 27 1/2" wide, 25" deep. Condition: stains, oxidation to chrome. 300.00 - 400.00

**234 Pair Mid Century Maison Jansen Campaign Chairs**

Pair mid century Maison Jansen brass, chrome and leather campaign chairs, folding X frame with leather seat, brass finials and paw feet. 36" high, 24" wide, 35" deep. Condition: wear to leather elements, oxidation and staining to frame. 3,000.00 - 5,000.00

**235 Technics SL-D 20 Direct Drive Turntable**

Technics SL-D 20 direct drive turntable 3 3/4" high, 16 3/8" wide. Condition: soiling, scratches, edge finish, wear. 100.00 - 200.00

**LOT #****236 Louis Sognot, Modern Art Deco Floor Mirror/Stool**

Louis Sognot (French, 1892-1970), modernist Art Deco tubular steel double sided standing floor mirror and similar vanity stool upholstered in calf hide, both circa 1930-1935. Mirror: 5'9" high, 21" wide, stool: 24" high, 18" diameter. Condition: finish wear, loss, oxidation to frame, mirror with visible clear plastic disc upper left, on reverse visible black disc lower left, stool with oxidation, hair loss. 10,000.00 - 12,000.00

**237 Pair Gilt Tooled Leather Obelisk Cabinets**

Pair of gilt tooled leather covered obelisk form lighted display cabinets, 20th century, each with two glass shelves. 73" high, 17" wide, 17 1/4" deep. Condition: one door pull partially threaded, minor leather scuffs, corner chip to one glass shelf. 600.00 - 800.00

**238 Vintage Gucci Ladies Faux Horn Sunglasses/Case**

Pair of vintage Gucci ladies faux horn sunglasses in case 2 1/4" high, 5" deep. Condition: case wear, scratches. 50.00 - 100.00

**239 Angel Ortiz (LA II) Two Graffiti Works**

Angel Ortiz (LAII) (b.1967), two works "Untitled" mixed media spray, marker on canvas, the smaller signed lower center, also on verso; the larger signed left center border. Sight size: 16 1/4" high, 20 1/4" wide to 18" high, 23 3/4" wide. Frame size: 17" high, 20 3/4" wide. Condition: the larger with a few edge scuffs. Angel Ortiz began a collaboration with Keith Haring at age sixteen and left high school to work for Haring. They had their first joint exhibition at Tony Shafrazi Gallery in 1982. His work can be found in museums worldwide. 700.00 - 900.00



April Connecticut Fine Estates Auction 4/26/2015

LOT #**240 Scandinavian Modernist Chrome Swivel Chair**

Scandinavian modernist chrome swivel chair manufactured by Dahlen Mobler AB Sweden, label on base, with vinyl seat. 33" high, 19" wide, 18" deep. Condition: rust, oxidation to base finish, marring to vinyl. 300.00 - 400.00

**241 Bang & Olufsen Beogram 5500 CD Player**

Bang and Olufsen Beogram 5500 CD player. 3" high, 16 1/2" wide. Condition: edge nicks, scuffs, scratches. 100.00 - 200.00

**242 John Stuart Mid-Century Credenza**

John Stuart mid-century credenza, having two ebonized folding cabinet doors flanked by two drawers, all with brushed metal pulls, label in drawer interior. 27 1/2" high, 74 1/2" long, 18" deep. Condition: stains, scratches, several small areas of veneer loss at edges. 500.00 - 600.00

**243 Large Industrial Style Chrome Hanging Lamp**

Large industrial style chrome hanging lamp with halophane shade. 24 1/2" high, 22 1/2" diameter. 400.00 - 600.00

**244 Peter Robert Keil "Housewife-Afternoon" O/C**

Peter Robert Keil (b. 1942)
"Housewife-Afternoon" oil on canvas, signed, noted lower left "Berlin", signed, titled verso. Sight size: 48" high, 36" wide. Frame size: 48 1/2" high, 36 1/2" wide. Condition: flaking paint and losses. 300.00 - 500.00

**245 Modern Laminated Wood Curved Form Table Lamp**

Modern laminated wood curved form table lamp on chrome and ebonized wood base. 18" high, 10" wide. 200.00 - 300.00

**LOT #****246 Bang & Olufsen Beomaster 5500 Control**

Bang and Olufsen Beomaster 5500 control for other components in Beosystem 5500 system. 3" high, 16 1/2" wide. Condition: scratches, scuffs. 100.00 - 200.00

**247 John Stuart Mid-Century Desk**

John Stuart mid-century desk having four drawers, each side with brushed chrome pulls on chrome legs, John Stuart label in drawer interior. 30 1/4" high, 72" wide, 36" deep. Condition: finish wear, loss, a few stains, small veneer edge losses. 600.00 - 800.00

**248 Pair Modernist Wrought Iron Stands, Copper Pans**

Pair of modernist wrought iron stands 20th century, with copper planters. 54 1/4" high, 16 1/2" diameter. 200.00 - 300.00

**249 Alexander S. Calder, Sterling Silver Bracelet**

Alexander S. Calder (Am. 1898-1976) classic silver hand hammered cuff form openwork scrolled bracelet, circa 1966. 2" high, 2 3/8" inner width, 2 3/4" outer width, 1 1/2" deep. Provenance: Private collection, New York City, acquired directly from the artist (a gift from the artist to the owner which was given on November 10, 1976 on the occasion of the opening of the Calder exhibit at the Whitney Museum for her birthday on November 11, 1976). This may well be the last gift made by Calder, as his untimely and unexpected death occurred on the next day, November 11, 1976. Together with a photo and description card from Perls Gallery, bearing the date 1966 and identification number "47". In 1954 Perls Galleries became Alexander Calder's dealer after the death of Calder's previous dealer, Curt Valentin. Perls explained his inclusion of Calder, a rare American among his stable of European artists, by saying that Calder's roots lay in France and that Calder bridged Europe and America the way Perls felt he did himself. In 1970, Calder designed the terrazzo sidewalk in front of the gallery and often resided in the Perls' home during long visits to New York City. Perls Galleries later handled Calder's



April Connecticut Fine Estates Auction 4/26/2015**LOT #**

estate and functioned as a quasi-archive of Calder's works, holding more than 7,000 negatives depicting Calder's art and preparing a Calder catalogue raisonn . The purchaser will be given a sworn notarized statement regarding the provenance of this bracelet.
40,000.00 - 50,000.00

250 Contemporary Pottery Urn

Contemporary pottery urn incised illegibly on base, dated '77. 9 3/4" high, 7 1/2" wide.
Condition: rim chip. 100.00 - 200.00

**251 Mid-Century Desk Chair**

Mid-century desk chair with upholstered back and seat. 30" high, 17 1/4" wide, 15" deep.
Condition: loose joints, finish wear, loss, upholstery wear. 100.00 - 200.00

**252 Frank Lloyd Wright Style Arm Chair**

Frank Lloyd Wright style arm chair, with paneled back and sides. 40 1/2" high, 22" wide, 24" deep. 200.00 - 300.00

**253 Capacious Upholstered Lowback Sofa**

Capacious upholstered lowback sofa, in blue plaid and yellow. 30" high, 39" wide, 22" deep.
Condition: fine estate condition. 200.00 - 400.00

**254 Paul Ferrante "2017 Old World Hanging Fixture"**

Paul Ferrante "2017 Old World Hanging Fixture" with iron frame and faux parchment shade. 19" high, 29" diameter. 2,000.00 - 3,000.00

**LOT #****255 Mid-Century Eight Drawer Serpentine Chest**

Mid-century eight drawer serpentine chest on square footed base. 32 1/2" high, 60" wide, 19 1/2" deep. Condition: scratches, finish wear, veneer loss, base loss. 300.00 - 400.00

**256 Peter Robert Keil, "Bird Boy" O/C**

Peter Robert Keil (b. 1942), "Bird Boy" oil on canvas signed, noted lower left Berlin '75, titled, signed verso. Sight size: 48" high, 36" wide. Frame size: 48 1/2" high, 36 1/2" wide.
Condition: small losses. 400.00 - 600.00

**257 Fisher "Studio-Standard" Stereo**

Fisher "Studio-Standard" stereo. 7" high, 20" wide. Condition: soiling, wear, oxidation. 50.00 - 100.00

**258 Westnofa Scandinavian Mid-Century Teak Chest**

Westnofa Scandinavian mid-century teak double chest, each side with four long drawers and keyhole pulls, Westnofa label verso. 31 1/2" high, 71 1/2" long, 18" deep. Condition: stains to top. 700.00 - 800.00

**259 Walnut Architects' Desk**

Walnut architects' desk with one drawer. 50 1/2" high, 28" wide, 18" deep. Condition: water stains to stretchers. 200.00 - 300.00

**260 Westnofa Scandinavian Teak Mid-Century Linen Press**

Westnofa Scandinavian teak mid-century linen press having seven drawers with keyhole pulls, side by side with two cupboard doors containing eight sliding shelves, label verso. 49" high, 48" wide, 18" deep. Condition: a few stains to top. 600.00 - 700.00



April Connecticut Fine Estates Auction 4/26/2015

LOT #

261 Modernist Red Vinyl Power Chair

Modernist red vinyl power reclining and vibrating lounge chair with collapsible arms, in working condition. 33" high, 31" wide, 60" long. Condition: a few tears, scuffs to vinyl. 400.00 - 500.00



262 Westnofa Scandinavian Teak Mid-Century Headboard

Westnofa Scandinavian teak mid-century headboard, partial label verso. 37 1/2" high, 81" wide, 1 1/2" deep. Condition: scuffs to lower board, crack to lower board at hole near edge. 300.00 - 400.00



263 Mid-Century Modern Chrome/Glass Coffee Table

Mid century modern glass and chrome coffee table, the beveled octagonal glass top on an arched frame chrome quadruped base. 18" high, 48" wide, 48" deep. Condition: oxidation to base. 300.00 - 400.00



264 Nepsco Inc. "Backsaver" Adjustable Recliner

Nepsco Inc. Backsaver adjustable recliner upholstered in beige leather on a bentwood base. 43" high, 30 1/2" wide, 60" long. Condition: a few stains to leather, small tears to right armrest. 200.00 - 300.00



265 Pair Westnofa Scandinavian Teak Side Cabinets

Pair Westnofa Scandinavian teak side cabinets, each having a single drawer with keyhole pull, label verso. 23" high, 18" wide, 18" deep. Condition: stains, marring to tops, finish wear, loss. 300.00 - 400.00



LOT #

266 Italian Modern Ash & Composite Occasional Table

Italian modern ash and composite occasional table. Round top on tapering faux bois legs. 28" high, 23 1/2" diameter. 100.00 - 200.00



267 1950's Chest

1950's chest having eight drawers edged in white. 34" high, 50 1/2" wide, 15 3/4" deep. Condition: stains, scratches, paint, finish loss. 100.00 - 200.00



268 Maitland-Smith Reproduction Sewing Table

Maitland-Smith reproduction satinwood sewing table, George III style with floral decoration, labeled underside. 28" high, 14 1/2" wide, 17" 1/2" deep. 100.00 - 200.00



269 Pair Large Copper/Brass Lantern Sconces

Pair of large copper, brass and metal exterior lantern sconces with acorn finials. 32" high, 17" wide. Provenance: from a circa 1902 Bedford, NY mansion owned by Florence J. Harriman, socialite, suffragist and diplomat. Condition: wear from exposure to elements. 500.00 - 600.00



270 Two Turned Brass Oil Lamps, Now As Table Lamps

Two turned brass oil lamps, now as table lamps. Bases: 10" high, 6 1/2" wide to 16" high, 7 3/4" diameter. Condition: larger with dents, cracks to base, need tightening. 300.00 - 400.00



271 English Queen Anne Walnut Gilt Shell Carved Mirror

English Queen Anne walnut gilt shell carved mirror. 37 1/2" high, 18 3/4" wide. Condition: veneer cracks, small areas of buckled veneer, silvering loss to mirror. 300.00 - 400.00



April Connecticut Fine Estates Auction 4/26/2015

LOT #

272 Pair Copper/Brass & Metal Freestanding Lanterns

Pair of large copper, brass and metal freestanding post lanterns with acorn finials, scrollwork bases. 34 1/2" high, 17" wide. Provenance: From a circa 1902 Bedford, NY mansion owned by Florence J. Harriman, socialite, suffragist and diplomat. Condition: wear from exposure to elements. 500.00 - 600.00



273 Continental Painted Kas

Continental painted Kas with molded cornice, iron strap hinges on cutout base. 78 1/2" high, 65 1/2" wide. Condition: worm damage, repairs, small losses, repainting. 400.00 - 600.00



274 Palissy Ware Style Plate w/Marine Life

Palissy ware style plate with marine life. 11 1/2" diameter. Condition: crazing, crack to one crab leg. 300.00 - 500.00



275 Pair Heavy Brass & Glass Lighting Fixtures

Pair of heavy brass and glass lighting fixtures with stepped round frame and milk glass dome shades. 6" high, 14 1/2" diameter. Condition: both hinge pins loose on one, other lacking one hinge pin, finish wear, light scratches. 400.00 - 600.00



276 Aubusson Tapestry Panel, "Rue Berton Paris Passy"

Aubusson tapestry panel depicting "Rue Berton Paris Passy" signed, dated "G Y Maitre Tapissiers en Hte Lisse 1918". 32" high, 24 1/2" wide. Condition: soiling, losses. 600.00 - 800.00



LOT #

277 Continental Carved Giltwood Oval Mirror

Continental carved giltwood oval mirror, with a foliate carved crest centering a grape cluster. 52" high, 26" wide. Condition: losses to foliate elements, old breaks. 400.00 - 600.00



278 Gilt Metal & Crystal Nine Light Chandelier

Gilt metal and crystal nine light chandelier with gilt rose decorated frame. 29 1/2" high, 24" diameter. 400.00 - 600.00



279 Group Porcelain & Brass Items

Group of porcelain and brass items, comprising two hand painted steins, one a Belleek blank signed, dated Jennie Foster Oct. 27, 1911, the smaller unsigned, seven Limoges plates and a brass stein. 6 3/8" high, 5 1/4" wide to 15 1/2" high, 9 1/2" wide. Condition: enamel, gilt wear, loss, plates with a few edge chips, dings to brass. 100.00 - 200.00



280 Charming Trompe L'oeil Ladies' Writing Desk

Charming trompe l'oeil ladies writing desk, the interior drawer signed "Painted for Judith Gordon by Edgar Berre 1956". 30" high, 35 1/2" wide, 20 1/2" deep. Condition: wear and loss to painted surface, repair at top of right leg. 300.00 - 400.00



281 Oak Drop Front Desk/Bookcase

Oak drop front desk/bookcase. 64" high, 33" wide, 11 1/2" deep. Condition: key plate lacking nail. 100.00 - 200.00



282 Tall Metal Empire Form Lamp w/Tripod & Shell Base

Tall metal Empire form lamp with tripod and shell base. 34" high, 7 1/2" wide. Condition: one foot with partial crack, repair. 200.00 - 300.00



April Connecticut Fine Estates Auction 4/26/2015**LOT #****283 Pair Louis XVI Fauteuils en Cabriolet**

Pair Louis XVI Fauteuils en Cabriolet, with beaded trapezoidal backs and acanthus carved arm supports on reeded tapering legs. 34" high, 24" wide, 20" deep. Condition: old painted surface losses and wear commensurate with age. 1,000.00 - 1,500.00

**284 Pair Brass Lamps/Staffordshire Horse & Rider Lamp**

Pair of brass candlestick lamps together with a Staffordshire horse and rider lamp. 9" high, 7" wide to 9 1/2" high, 4 3/4" wide. Condition: age cracks, chip to visor. 200.00 - 300.00

**285 Seven Antique Kitchen Implements w/Two Tole Trays**

Seven antique kitchen implements including a figural fox cleaver, a boot handled cleaver, two choppers and other implements, together with two tole trays. 7" long, 2" wide to 18" high, 24 1/2" wide. Condition: use wear, dents, dings, scratches, rust, paint wear, loss 300.00 - 500.00

**286 Four Limoges Oyster Plates**

Four Limoges oyster plates. 10" diameter. 200.00 - 300.00

**287 Period Hepplewhite Side Chair**

Period English or Scottish Hepplewhite carved shield back side chair. 38" high, 16 1/2" wide, 17 1/2" deep. 100.00 - 200.00

**288 George III Inlaid Mahogany Hanging Corner Cupboard**

George III inlaid mahogany hanging corner cupboard, molded cornice over an inlaid frieze above an astragal glazed door enclosing shelves. 46" high, 31" wide, 19" deep. Condition: losses and chipping of inlays and veneers. 400.00 - 600.00

**LOT #****289 George III Carved Mahogany Armchair**

George III mahogany armchair with carved detail, upholstered in blue leather. 40" high, 25" wide, 22" deep. Condition: leather with wear, tears, stains, wood with finish wear, loss, repair, small loss to left front arm, edge chips, losses. 800.00 - 1,200.00

**290 Three Tole Painted Floral Groups**

Three tole painted metal floral groups comprising carnations, poppies and a lemon tree. 10 3/4" high, 14 1/2" wide to 17 1/2" high, 8" wide. Condition: soiling, paint loss, bends. 100.00 - 200.00

**291 Pair Corinthian Style Wood Columns**

Pair of Corinthian style carved and painted wood columns. 66 3/4" high, 10 1/4" wide. Condition: wear from exposure to elements, chips, losses, paint wear, loss. 200.00 - 400.00

**292 Two Floor Lamps**

Two floor lamps comprising a painted iron lamp and painted wood column lamp with hand painted anchor shade. 61 1/2" high, 11 1/2" wide to 63 1/2" high, 10" wide. 200.00 - 400.00

**293 Five Staffordshire Items**

Five Staffordshire items including a Rockingham pottery glazed bear, two mugs, a castor, and a mustard pot. 4 1/4" high, 6" long to 5" high, 4 3/4" wide. Condition: bear with a couple small base chips, other with chips, stains. 200.00 - 400.00



April Connecticut Fine Estates Auction 4/26/2015

LOT #**294 Pair Three Arm Brass Sconces w/Ribbon Back Plate**

Pair of brass three arm sconces with ribbon back plate, acanthus leaf decoration. 29 3/4" high, 16 1/2" wide. 400.00 - 600.00

**295 Transferware Blue/White Porcelain Umbrella Stand**

Transferware blue & white porcelain umbrella stand. 17" high, 8" diameter. 200.00 - 250.00

**296 Four Small Items Furniture**

Four small items of furniture comprising a folk art twig stand and three children's chairs. 18" high, 13 1/4" wide, 11" deep to 29 1/2" high, 26" wide, 24" deep. Condition: loose joints, paint wear, loss, age cracks, breaks. 200.00 - 300.00

**297 Victorian Carved Walnut Library Chair**

Victorian carved walnut library armchair, with retractable foot rest, birds eye panels, carved accents and incised detail. 36" high, 27" wide, 26" deep. Condition: lacking part of carved brass seat rail, wear and abrasions. 400.00 - 600.00

**298 Five Brass & Wood Canes**

Five brass and wood canes. 36" long, 4 3/4" wide to 39" long, 2 1/2" wide. Condition: finish wear, loss, use wear. 100.00 - 200.00

**299 Two Pair Single Arm Sconces, Brass & Silver Plate**

Two pair single arm sconces comprising a brass pair and a silver plate pair. 13 1/2" high, 9" wide to 9 1/2" high, 5 1/2" wide. Condition: plate wear. 200.00 - 400.00

**LOT #****300 Copper, Brass & Metal Ceiling Lantern**

Copper, brass and metal ceiling lantern with acorn finial and drop. 36" high, 17" wide. Condition: wear from exposure to elements. 300.00 - 500.00

**301 Queen Anne Mahogany Tilt Top Table**

Queen Anne mahogany tilt top table, turned stem on pad feet. 29" high, 32 1/2" wide. Condition: stains, marring to top, age cracks, repairs. 300.00 - 400.00

**302 Biedermeier Maple & Parcel Ebonized Settee**

Biedermeier maple and parcel ebonized open back settee, the shaped back with pierced double splats flanked by spindles, rolled open arms with spindles, on saber legs. 34" high, 69" wide, 19 1/2" deep. 500.00 - 700.00

**303 Group Bronze & Brass Items**

Group of bronze and brass items including a large pair of calipers, a bronze dolphin doorknocker, inkwell, desk bells and other items. 3 1/4" long, 3/4" wide to 18" long, 3 1/4" wide. Condition: use wear, dings, dents, scratches, caliper lacking knob 200.00 - 300.00

**304 Two Furniture Items Chippendale Side Chair/Ottoman**

Two furniture items comprising a Chippendale style side chair and an upholstered ottoman on casters. 20" high, 22" wide, 25" deep to 38 1/2" high, 22" wide, 19" deep. Condition: ottoman with stains. 200.00 - 300.00

**305 Maitland-Smith Circular Faux Book Cabinet**

Maitland Smith faux book cabinet, of circular form with green & gilt leather top, labeled underside. 28" high, 14" deep. 100.00 - 200.00



April Connecticut Fine Estates Auction 4/26/2015

LOT #**306 Victorian Mahogany Hall Stand**

Victorian mahogany hall stand, the shaped and pierced upper section centering a shaped mirror, the lower section with a single serpentine drawer with beaded lower edge, with pierced supports on a bracket base. 84" high, 36" wide, 14" deep. Condition: wear consistent with age and use, one drawer runner loose, chip to left bracket foot. 500.00 - 700.00

**307 Pair Turned Brass Andirons w/Firescreen**

Pair of turned brass andirons with ball and claw feet together with a mesh firescreen. 19 1/2" high, 8 1/2" deep to 30" high, 55 1/2" wide. Condition: oxidation to brass. 300.00 - 400.00

**308 Small Inlaid Mahogany Chippendale Mirror**

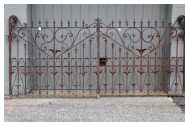
Small mahogany Chippendale mirror with inlaid border. 24 3/4" high, 14" wide. Condition: finish, silvering wear, loss, veneer cracks, cracked ear and replaced ear or two. 200.00 - 300.00

**309 Victorian Brass "Hinks No. 2 Duplex" Oil Lamp**

Victorian brass "Hinks No. 2 Duplex" oil lamp, now as lamp, with hand painted shade. 31" high, 6" wide. Condition: finish wear, loss. 300.00 - 400.00

**310 Pair Large Wrought Iron Gates**

Pair wrought iron gates with scrolled heart and applied foliate decoration, found in Bennington, Vermont, probably 19th century. Each panel 69" high, 78" wide. Condition: wear from exposure to elements, rust. 800.00 - 1,200.00

**LOT #****311 Four Small Vintage Stools**

Four small stools comprising three turned stools and an adjustable stool. 14" high, 11" wide to 19" high, 14" diameter. Condition: finish wear, loss, age cracks, stains, losses, loose joints. 200.00 - 300.00

**312 Brass Bouillotte Style Four Light Chandelier**

Brass bouillotte style four light chandelier with green tole shade. 31 1/2" high, 17 1/2" diameter. 400.00 - 600.00

**313 Two Small Chippendale Mirrors**

Two small Chippendale mirrors, one period and one Eldred Wheeler labeled example. One 20" high, 12" wide. Condition: one with losses and repair to one ear, one with replaced plate. 200.00 - 300.00

**314 Tole Painted Six Light Chandelier**

Tole painted six light chandelier with leaf and floral decoration. 26" high, 46 1/2" wide. Condition: slight bends to two sockets, scattered paint loss. 400.00 - 600.00

**315 Queen Anne Style Demilune Card Table**

Mahogany Queen Anne style demilune card table with shell carved knees, pad foot. 29" high, 29 3/4" wide, 15" deep, open: 30" deep. Condition: stains, loose joints, cracks, edge separations, repairs, losses. 200.00 - 300.00

**316 Royal Copenhagen Porcelain Dessert Service**

Royal Copenhagen porcelain partial dessert service in the Frijsenborg pattern - seconds - comprising coffeepot, teapot, covered sugar, creamer, twelve dessert plates, twelve luncheon plates, one oval tray, one round serving dish, twelve cups, thirteen saucers, two demitasse cups, one demitasse saucer, twelve nut dishes, 3 7/8" high, 2 3/4" wide to 10" high, 10 1/2" wide. Condition: covered sugar, seven dessert



April Connecticut Fine Estates Auction 4/26/2015**LOT #**

plates in a similar, not identical pattern, edge chip to one nut dish, cups in three patterns, seconds. 300.00 - 400.00

317 Pair Large Brass Bouillotte Four Light Lamps

Pair of large brass bouillotte four light lamps with green tole shades. 36" high, 19" diameter. 500.00 - 700.00

**318 American Hepplewhite Butler's Cabinet**

American Hepplewhite butler's cabinet, drop down drawer front with central locking cabinet in interior flanked by one long drawer over two short drawers, cupboard drawers below with three sliding shelves in interior. 42" high, 46 1/2" wide, 22 1/4" deep. Open 32 1/2" deep. 400.00 - 500.00

**319 Eleven English Wood & Sons Porcelain Plates**

Eleven English Wood & Sons Woodware Imari style dinner plates in the Wincanton pattern. 10" diameter. Condition: gilt, enamel wear, scratches, one with edge chip, one with spider crack. 300.00 - 400.00

**320 Victorian Rosewood Melodeon**

Victorian Rosewood Melodeon, 19th century, label in interior "Hartford Music Store Carhart & Needhams Melodeon New York". 29" high, 36" wide, 19" deep. Condition: soiling, debris in interior, veneer cracks, loss. 200.00 - 250.00

**321 Southern Walnut/Yellow Pine Blanket Chest**

Southern walnut and yellow pine blanket chest, lift top with applied molded edge opening to an open interior with candle box, on a shaped bracket base. 18" high, 45" wide, 17 1/2" deep. Condition: front molding loose, lacks key. 200.00 - 300.00

**LOT #****322 Six Section Oak Four Drawer File Cabinets**

Six section oak four drawer file cabinets manufactured by Yawman and Erbe Manufacturing Co., Rochester, NY. Each unit 53" high, 15 3/4" wide. Condition: use, finish wear, loss, stains, scratches. 800.00 - 1,000.00

**323 Cement Garden Pedestal w/Stepped Base**

Cement garden pedestal with stepped base. 33 1/2" high, 12" wide. Condition: cracks, chips, losses. 100.00 - 200.00

**324 American Chippendale Mahogany Side Chair**

American Chippendale mahogany side chair, with notched crest, pierced splat, on molded square legs. 36" high, 20" wide, 17" deep. Condition: old break to crest, small losses. 100.00 - 200.00

**325 Tinware Double Lens Whale Oil Work Lamp**

Tinware double lens whale oil work lamp. 8 1/2" high, 4" wide. Condition: oxidation, slight bends, two nicks to one hood edge. 150.00 - 250.00

**326 Sheraton Mahogany Work Table with Glass Knobs**

American Sheraton two-drawer work table, with glass pulls and reeded stiles and legs. 29" high, 20" wide, 18 1/2" deep. 400.00 - 500.00

**327 Victorian "Success" Transfer Decorated Oil Lamp**

Victorian "Success" transfer decorated oil lamp, now as lamp. 26" high, 15" diameter. Condition: needs tightening, dent to metal collar below stem, metal finish wear, loss. 400.00 - 600.00



April Connecticut Fine Estates Auction 4/26/2015

LOT

328 Gilded Copper Setter Weathervane by Washburn Co.

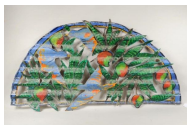
Gilded copper full bodied setter weathervane manufactured by E.G. Washburn Co., Middleton, MA, c.1880. Setter: 13 1/2" high, 31 1/2" long. Vane: 63 1/2" high, 31 1/2" long. This vane is the property of a Massachusetts gentleman who worked for Washburn as an adolescent. Upon leaving at age 20 to join the service, this vane was gifted to him as he had often admired it and it had been in the shop for longer than anyone could remember. It was stored at his parents house until he got out of the service, at which time he bought a house where this high-ranking Shriner enjoyed it for more than 50 years. Condition: gilt wear, loss, seam split to top of left front foot. 6,000.00 - 9,000.00

**329 Folk Art Hooked Rug, American**

Folk Art hooked rug, American. 6'0" long, 2'10" wide. Condition: wear, side, end losses, repairs. All rugs sold as is. 200.00 - 300.00

**330 Diana Morse Folk Art Painted Tin Plaque**

Diana Morse folk art painted tin plaque depicting birds and fruit. 23" high, 44 1/2" wide. Condition: rust, paint wear, loss. 100.00 - 200.00

**331 Group Nine Blue & White Staffordshire Items**

Group of nine blue and white Staffordshire items, comprising five bowls, two tea bowls and a covered sugar with wood lid. 2 1/2" high, 3 3/4" diameter to 5" high, 7" wide. Condition: chips, cracks, stains. 100.00 - 200.00

**332 Meriden Cutlery Co. Oak Display Case**

Meriden Cutlery Co. oak display case with original labels. 6' long, 36" wide, 6" deep. Condition: some loose, missing corner blocks, finish wear, mold, two metal hooks on one side. 200.00 - 300.00



LOT

333 Group Fireplace Equipment

Group of fireplace equipment, comprising wire screen, ball top andirons, and two utensils. Screen: 33" high, 50" wide. Andirons: 16" high. Condition: estate condition throughout. 300.00 - 400.00

**334 American Classical Gilded Tabernacle Mirror**

American classical gilded tabernacle mirror. 39 3/4" high, 23 5/8" wide. Condition: age cracks, gilt, gesso wear, loss. 300.00 - 400.00

**335 Victorian "Carter's Literary Machine"/Music Stand**

Two Victorian stands comprising "Carter's Literary Machine" made in London with partial label on base on casters and an adjustable music stand. 32 1/2" high, 31 3/4" wide to 55" high, 22 1/2" wide. Condition: finish wear, loss, age cracks, stains, Carters with wobbly base. 400.00 - 500.00

**336 Tinware Single Lens Whale Oil Work Lamp**

Tinware single lens whale oil work lamp, stamped on hood "Patent". 8" high, 4" wide. Condition: oxidation. 100.00 - 200.00

**337 Country Sheraton Blue Painted Washstand**

Country Sheraton blue painted washstand, with shaped splash board and turned linen rails, shaped lower shelf on baluster turned legs. 34" high, 28" wide, 16" deep. Condition: wear to old painted surface. 300.00 - 400.00

**338 Diana Morse Folk Art Painted Tin Sunfish**

Diana Morse folk art painted tin sunfish, indistinctly signed, dated 1991 verso. 19" high, 19" long. Condition: scratches, paint loss. 100.00 - 200.00



April Connecticut Fine Estates Auction 4/26/2015

LOT #

339 Pair Salem Hepplewhite Carved Mahogany Side Chairs

Pair of Salem Hepplewhite carved mahogany side chairs, with carved arched crests, shield backs with five carved slats, on square tapering legs. 39" high, 21.5" wide, 18" deep. Condition: repairs to legs, refinished. 600.00 - 900.00



340 Three Redware Jars

Three redware jars. 7" high, 4 1/2" wide to 8 1/4" high, 5 1/2" wide. Condition: soiling, crazing, chips, glaze wear, loss. 200.00 - 300.00



341 Pair Cast Cement Floral Baskets

Pair cast cement floral baskets. 14" high, 16" wide. Condition: wear from exposure to elements. 300.00 - 400.00



342 Bench Made Hepplewhite Style Sideboard

Bench made inlaid mahogany Hepplewhite style sideboard, having long drawer over recessed doors flanked by cabinet doors, all string inlaid, late 19th/early 20th century. 40" high, 66" wide, 24" deep. Condition: old repairs, small losses, left center door split. 600.00 - 800.00



343 Folk Art Carved Wooden Rocking Horse

Folk art carved wood rocking horse. 27 1/2" high, 35 1/2" wide. Condition: chips, age cracks, separations, losses. 200.00 - 300.00



344 Hepplewhite Style Inlaid Mahogany Sideboard

Hepplewhite style inlaid mahogany sideboard, serpentine form with flame mahogany veneers, inlaid quarter fans, stringing and pendant bellflowers. 38 1/2" high, 65" wide, 23 1/2" deep. 1,500.00 - 1,800.00



LOT #

345 Redware Harvest Jug

Redware harvest jug with ribbed handle. 9 3/4" high, 7 1/2" wide. Condition: chips, losses. 100.00 - 200.00



346 Cast Stone Garden Pedestal

Cast stone garden pedestal. 24" high, 14" diameter. Condition: wear from exposure to elements, chips, cracks, losses, repairs. 100.00 - 200.00



347 Two "Orcutt" Carved Painted Birds

Two carved and painted robins by R.C. Orcutt, one hand signed under the tail, the larger with branded signature under tail. 8 1/4" high, 11" long to 14" high, 12 1/4" wide. Condition: age cracks, protruding nail in body. 300.00 - 400.00



348 Partial Set Cut Etched & Gilded Crystal Stemware

Partial set of cut, etched and gilded stemware including seventeen wines in two sizes, six champagnes, six tumblers and others. 5 1/2" high, 2 1/2" wide to 7 1/2" high, 3 3/4" wide. Condition: gilt wear, loss, chips. 100.00 - 200.00



349 Fine Chippendale Mahogany Serpentine Chest

Fine Chippendale mahogany serpentine chest of drawers, the molded rectangular top with serpentine front over a conforming case of four drawers with applied beaded surrounds, on a molded bracket base with shaped returns. 35" high, 39" wide, 22" deep. Condition: minor wear consistent with age. 3,000.00 - 4,000.00



April Connecticut Fine Estates Auction 4/26/2015

LOT #**350 Pair Davenport Staffordshire Teapots**

Pair of Davenport Staffordshire teapots one stamped "Davenport" on base. 5 1/2" high, 9 1/2" wide. Condition: chips. 100.00 - 200.00

**351 Folk Art Carved & Painted Wood Blue Heron Decoy**

Folk art carved and painted wood great blue heron confidence decoy in blue paint with original weathered patina, on wood stand. The majority of larger waterfowl decoys were usually made as confidence decoys or ornamental carvings. 41" high, 32" long. Condition: wear from exposure to elements, age cracks, paint wear, loss, losses. 1,000.00 - 2,000.00

**352 Chippendale Style Carved Mahogany Wing Chair**

Chippendale style carved mahogany wing chair, fine quality bench made replica on acanthus carved cabriole legs ending in ball and claw feet. Upholstered in a fine green silk moire. 47" high, 30" wide, 32" deep. 300.00 - 400.00

**353 Folk Art Metal Train Set & Three Metal Toy Carts**

Folk art painted and stenciled metal train set, signed, dated on underside "Young c. 90", together with three toy painted metal carts. 4 1/4" high, 5 1/2" long to 9" high, 14" long. Condition: stains, rust, paint wear, loss, crazing. 200.00 - 300.00

**354 Decorative Arts Lot, Three Items**

Three metal and wood items comprising an Eastlake coal hod/fireplace set with three original tools, a book press and a plant stand 13" high, 17 1/2" wide to 32 3/4" high, 15" diameter. Condition: finish, paint wear, loss, dents, dings, rust, cracks, age cracks, chips. 300.00 - 400.00

**LOT #****355 Large Redware Bowl**

Large redware bowl. 7 1/2" high, 17" diameter. Condition: soiling, crazing, glaze wear. 100.00 - 200.00

**356 WWII US Navy Lifeboat Binnacle, Compass**

WWII US Navy lifeboat binnacle, compass marked "US Navy Boat No. 371 New York, April 1919". 10" high, 8 1/2" wide. Condition: dents, finish, paint wear, loss, soiling. 100.00 - 200.00

**357 American Classical Giltwood Pier Mirror**

American classical giltwood pier mirror, with split pilaster frame and rosette blocked corners. 45" high, 23 1/2" wide. Condition: small losses and chips. 400.00 - 600.00

**358 Windsor Bow Back Side Chair w/Shaped Seat**

Windsor bow back side chair with shaped seat. 37" high, 18" wide, 15 3/4" deep. Condition: age cracks, wear, chips, losses. 200.00 - 300.00

**359 Pine Blanket Chest w/Painted Lid**

Pine blanket chest with painted lid. 20 1/2" high, 45" wide, 21 1/2" deep. Condition: age cracks, losses, paint, finish wear. 100.00 - 200.00

**360 Pair Wm & Mary Style Chairs, Manner John Gaines**

Pair of carved maple William & Mary style side chairs in the manner of John Gaines (Portsmouth, New Hampshire, 1704-1743), with carved crests, rush seats and carved Spanish feet. 42" high, 19 1/2" wide, 14" deep. Condition: restorations, finish wear, scratches, age cracks, small losses. 2,000.00 - 3,000.00



April Connecticut Fine Estates Auction 4/26/2015

LOT

361 Spongware Lidded Casserole w/Glazed Blue Interior

Spongware lidded casserole with glazed blue interior. 7 1/2" high, 11 1/2" wide. Condition: edge chips, stains. 100.00 - 200.00

**362 Federal Inlaid Mahogany Ladies Secretary Desk**

Federal inlaid mahogany ladies secretary in two parts, the upper section with flame mahogany crossbanded doors opening to a fitted interior, above a fall front crossbanded writing surface over four string inlaid long drawers, raised on flaring French feet. 52 1/2" high, 41" wide, 21" deep. Condition: damage to one door, some checking and wear consistent with age, split to one side. 2,500.00 - 3,500.00

**363 Figured Maple Salesmen's Sample Table**

Figured maple salesmen's sample drop leaf table, rectangular top with D form falling leaves, on turned ring and baluster turned tapering column legs. 17" high, 23" wide (open), 24" deep. Condition: surface wear consistent with age. 300.00 - 400.00

**364 Folk Art Painting Ship w/3 Carved Mermaid Plaques**

Folk Art painting of ship "Carolina I" oil on canvas, unsigned together with three carved wood mermaid plaques. 8" high, 18" long to 18" high, 12 1/2" wide. Sight size: 22" high, 32 1/2" wide. Frame size: 24 3/4" high, 35" wide. Condition: crazing, scattered small spots, paint wear, loss. 300.00 - 500.00

**365 Windsor Painted Comb Back Rocking Chair**

Windsor painted comb back rocking chair, having serpentine crest with notched ears, shaped hand holds and bamboo turned legs. 41" high, 23 1/2" wide, 29" deep. Condition: wear to painted surface, center stretcher loose, old split to seat. 400.00 - 600.00



LOT

366 Set Twelve Replica Sackback Windsor Armchairs

Set of twelve replica sackback Windsor armchairs, branded Frederick Duckloe and Bros. Ex collection First Boston Corporation. 38 1/2" high, 26" wide, 20" deep. Condition: estate condition with some wear and finish loss throughout. 500.00 - 700.00

**367 Cast Iron Gate w/Shell, Ribbon & Torch**

Cast iron gate with shell, ribbon and torch decoration. 29" high, 28" wide. Condition: wear from exposure to elements, rust. 100.00 - 200.00

**368 Fine Sheraton Mahogany Two Drawer Side Table**

Fine Sheraton mahogany two drawer side table, the finely figured rectangular top over two drawers, on ring turned tapering column legs ending in turned ball feet. 29 1/2" high, 25" wide, 19 1/2" deep. Condition: minor wear, chip to upper drawer and back. 300.00 - 500.00

**369 Butcher Block Table/Shelf**

Butcher block table with shelf. 65 3/4" high, 24" wide, 19 1/2" deep. Condition: stains. 200.00 - 300.00

**370 Group Folk Art Wood Carvings**

Group of folk art wood carvings comprising a primitive horse, a boot, and two European figures. 9 3/4" high, 3" wide to 6" high, 13" long. 300.00 - 500.00

**371 Substantial Country Gateleg Dining Table**

Substantial country gateleg dining table, thick pine rectangular top with falling leaves on birch/maple turned legs with stretcher. 30" high, 68" wide (open), 72" deep. Condition: minor wear and scratches, crack in top, top not attached. 600.00 - 800.00



April Connecticut Fine Estates Auction 4/26/2015**LOT #****372 Two Chippendale Style Wing Chairs**

Chippendale style wing chair, fine replica chair having molded front legs. 49" high, 30" wide, 24" deep, together with a second mahogany molded leg example, in distressed red leather upholstery. 300.00 - 400.00

**373 Eight Door Storage Cupboard**

Eight door apothecary storage cupboard, possibly butternut, with paneled doors, porcelain pulls. 62" high, 37 1/2" wide, 19 1/2" deep. Condition: chips, losses, a couple reset hinges. 200.00 - 300.00

**374 Lead Figural Fountain By Florentine Craftsmen, NY**

Lead figural fountain by Florentine Craftsmen, N.Y. depicting Pan with shell base. 37" high, 20 1/2" wide, 28" deep. Condition: break to one pipe, restoration to arms. 400.00 - 600.00

**375 Carved & Painted Carousel Horse/Original Paint**

Carved and painted carousel horse in original paint with rope tail. 40" high, 45 1/2" long, 9" wide. Condition: paint wear, loss, chips, separations, ears probably replaced, age cracks, some areas of repaint. 5,000.00 - 7,000.00

**376 Queen Anne Style Dish Top Maple Candlestand**

Queen Anne style dish top maple candlestand, circular dished top tipping on a turned standard, on a tripod cabriole leg base ending in platformed pad feet. 29 1/2" high, 19" diameter. Condition: split to top. 200.00 - 300.00

**377 Cut Glass & Metal Four Light Hanging Lantern**

Cut glass and metal four-light hanging lantern with smoke bell. 28" high, 14 1/2" diameter. 400.00 - 600.00

**LOT #****378 Late Sheraton Two Part Center Table**

Late Sheraton two part center table on turned legs. 28" high, 43 1/4" diameter. Condition: stains, cracks, residue to top, originally with leaves, new board on underside. 200.00 - 300.00

**379 Cast Iron Gate**

Cast iron gate depicting lambs under a weeping willow. 30" high, 28 1/2" wide. Condition: wear from exposure to elements, rust. 500.00 - 700.00

**380 Victorian Needlepoint & Blue Velvet Ottoman**

Victorian needlepoint and blue velvet ottoman, with storage compartment and molded base, old label for Bachelor & Son, Craydon. 18 1/2" high, 20" wide, 20" deep. Condition: considerable wear, one hole to needlepoint. 200.00 - 300.00

**381 Group Six Hepplewhite Style Shield Back Chairs**

Group of six Hepplewhite style shield back dining chairs comprising two foliate and fan carved arm chairs, a pair of urn and drapery carved side chairs, and a pair of side chairs having molded legs and pierced splats. The arms: 40" high, 24 1/2" wide, 18" deep; the sides: 38 1/2" high, 20" wide, 17 1/2" deep. Condition: all in estate condition. 200.00 - 250.00

**382 Country Sheraton Painted Stand**

Country Sheraton painted stand with two banked drawers and ring turned column legs. 28 1/2" high, 19" wide, 17" deep. Condition: old black paint to the base over earlier red. 200.00 - 300.00



April Connecticut Fine Estates Auction 4/26/2015

LOT #**383 Oak & Braided Rope Nautical Interest Mirror**

Interesting oak and braided rope nautical interest mirror, rectangular form, the braided rope forming a knotted crest and heightened in gold. 27" high, 37" wide. Condition: fine estate condition as found. 200.00 - 400.00

**384 Oak 8 Day Clock**

Oak eight day wall clock. 21 1/4" high, 12" wide. Condition: dial faded. 100.00 - 200.00

**385 Chippendale Style Tiger Maple Mirror**

Chippendale style tiger maple mirror with gilt pierce carved eagle crest. 39 1/2" high, 22" wide. Condition: mirror with silvering loss. 200.00 - 400.00

**386 Set Three Painted Metal Column Form Stands**

Set of three painted metal column form stands. 18 1/2" high, 11 1/4" wide, 11 1/4" deep. Condition: wear from exposure to elements, rust, one with top edge loss. 100.00 - 200.00

**387 Group Heisey & Other Glassware**

Group of Heisey and other glassware including a Heisey punch bowl, two Heisey bases, thirteen Heisey punch cups in two sizes, and other glassware. 2 1/8" high, 3 7/8" wide to 7 1/8" high, 12 3/4" wide. Condition: chips, scratches, crack to pitcher. 100.00 - 200.00

**388 Apothecary Desk Top with Two Drawer Maple Desk**

A wood and glass apothecary desk top and a two drawer maple desk on turned legs and casters. 27 1/2" high, 25" wide to 30" high, 42" wide, 21 1/2" deep. Condition: stains, scratches, chips, desk with separation to top, loss to one knob. 200.00 - 300.00

**LOT #****389 Group Fireplace Equipment**

Group of fireplace equipment, comprising a wire screen, three tools and a stand, estate condition as found. Screen: 31 1/2" high, 52" wide. Stand: 33 1/2" high. 100.00 - 200.00

**390 Sheraton Style Portsmouth Lolling Chair**

Sheraton style Portsmouth lolling chair, replica Federal chair with fluted legs and arm supports, and having satin birch panels. 43 1/2" high, 27" wide, 25" deep. 200.00 - 300.00

**391 Four Table Lamps**

Four table lamps comprising a green tole, a faux marbled lamp, an oil lamp and a ginger jar lamp. 11" high, 8" wide to 29 1/2" high, 7" wide. Condition: scratches to tole shade, marble chips, enamel wear. 200.00 - 300.00

**392 Brass Balance Scale Candle Holder**

Brass balance scale oil lamp, now as candle holder. 27 1/4" high, 18 1/2" wide. 200.00 - 300.00

**393 Antique Cast Iron & Wood Treadle Saw**

Antique cast iron and wood treadle saw, foot pedal operated jigsaw. Frame marked New Rogers. 37" high, 16" wide, 24" deep. Condition: in as found estate condition, damage, losses, wear. 100.00 - 200.00

**394 Antique Oak Primitive Saddle Maker's Bench**

Antique oak primitive saddle maker's bench. 41" high, 11" wide, 28" deep. Condition: in as found estate condition. 100.00 - 200.00



April Connecticut Fine Estates Auction 4/26/2015

LOT #**395 Wood Card Catalog & Glass, Brass Kitchen Items**

Group of wood, glass and brass kitchen items including a set of seven rice measuring cups stamped "The Oriental Metal Pressing Works, Ltd., Bombay, three lithographed tins, a "Woodline" Danish ice bucket and other items. 1 1/2" high, 1 1/4" diameter to 14 1/4" high, 15 3/4" wide. Condition: use wear, scratches, dents, dings, stains. 100.00 - 200.00

**396 New Haven, CT Steeple Clock, Eight Day Movement**

New Haven, CT steeple clock, eight day movement with lithographed glass panel of Girard College, Philadelphia. 14 1/2" high, 7 1/2" wide. Condition: paint, finish wear, loss, veneer cracks. Provenance: Estate of John Albertine, New Jersey, a member of National Association of Watch & Clock Collectors. 500.00 - 600.00

**397 English Brass & Ebonized Mantel Clock**

English brass and ebonized mantel clock with arched crest, spherical finials, dial with later movement on paw feet. 10 1/2" high, 5 3/4" wide. Condition: finish wear, loss, crazing, chips, losses. 200.00 - 300.00

**398 Ogee Shelf Clock & Seth Thomas Cottage Clock**

Two mantel clocks comprising a miniature ogee shelf clock by Welch Mfg., Forestville, CT. Circa 1855 with thirty hour movement, spring driven time and strike and alarm, printed paper label, and a Seth Thomas cottage clock with Roman numeral dial, with keys. 9 1/4" high, 7" wide to 11 1/2" high, 7 3/8" wide. Condition: dials with paint wear, loss, stains, crazing, paint loss to decorative glass panel, Seth Thomas with small dings to base. Provenance: Estate of John Albertine, New Jersey, a member of National Association of Watch & Clock Collectors. 300.00 - 400.00

**LOT #****399 English Regency Carved Mahogany Bracket Clock**

English Regency mahogany bracket clock with brass inlaid pewter dial by Grant and Terry, Prince Street, Leicester Square, with keys 12 1/4" high, 7 1/4" wide. Condition: age cracks, one loose glass side panel, silvering wear, loss to dial, a few small losses, repairs. Provenance: Estate of John Albertine, New Jersey, a member of National Association of Watch & Clock Collectors. 600.00 - 700.00

**400 Eli Terry Cottage Clock w/Time & Alarm**

Eli Terry cottage clock with time and alarm in iron case with wood back, labeled, with key. 6 1/8" high, 4 3/8" wide. Condition: paint, finish, paper wear, loss. Provenance: Estate of John Albertine, New Jersey, a member of National Association of Watch & Clock Collectors. 200.00 - 300.00

**401 Blasdell, Silver & Brass Clock Face 18th C.**

18th century silver and brass clock face, signed, dated Nicholas Blasdell 1776. 14" high, 10 1/4" wide. Condition: scratches, bends, pieces separated from dial. 1,000.00 - 2,000.00

**402 NJ Tall Clock, Silas W. Howell, New Brunswick**

Federal cherrywood tall case clock, with swan neck pediment and tombstone glass door flanked by reeded columns, above a case with arched molded door flanked by fluted quarter columns, above a rectangular base with shaped base with bracket feet; the enameled dial with calendar wheel and floral spandrels, inscribed "Silas W. Howell, New Brunswick, NJ"; 30 hour brass movement. New Jersey, circa 1795-1800. 94" high, 19" wide, 11" deep. Condition: old finish with some checking, minor losses, repairs to dial. 3,000.00 - 4,000.00



April Connecticut Fine Estates Auction 4/26/2015

LOT #**403 Holosteric Brass Barometer**

Holosteric brass barometer, stamp verso PHBN". 2 1/8" high, 5 1/8" diameter. Condition: glass cracked. Provenance: Estate of John Albertine, New Jersey, a member of National Association of Watch & Clock Collectors. 100.00 - 200.00

**404 Seth Thomas Inlaid Mahogany Balloon Clock**

Seth Thomas inlaid mahogany balloon clock, circa 1900-1910, made in Thomaston, CT. Mahogany case with pressed inlay design, brass bezel and feet. Eight-day spring driven movement, Arabic chapter slow and fast mechanism, spade hands, time and strike, with key. 12 1/4" high, 7 1/2" wide. Condition: a couple refinished shallow depressions to top of case, edge nicks, veneer loss to back. Provenance: Estate of John Albertine, New Jersey, a member of National Association of Watch & Clock Collectors. 300.00 - 400.00

**405 Victorian Marble/Slate Mantel Clock**

Victorian marble/slate mantel clock, 19th century, with enamel dial. 13 5/8" high, 15 1/2" wide. Condition: dial wear, edge chips. 100.00 - 200.00

**406 French Brass Traveling Clock w/Repeater Movement**

French brass traveling clock with repeater movement, under glass dome, with key. 4 3/8" high, 3 1/8" wide. Condition: a couple small scratches to one glass side panel. Provenance: Estate of John Albertine, New Jersey, a member of National Association of Watch & Clock Collectors. 200.00 - 400.00

**LOT #****407 Beehive Mantle Clock**

Beehive mantel clock circa 1855 with brass columns, satinwood inlay, with key, marked "VAR" on works. 9 3/4" high, 6 5/8" wide. Condition finish wear, loss, chips, small losses to base, buckling to satinwood inlay, a few small dings, soiling to dial. Provenance: Estate of John Albertine, New Jersey, a member of National Association of Watch & Clock Collectors. 200.00 - 300.00

**408 Banjo Clock By Horace Tift, N. Attleboro MA**

Banjo clock by Horace Tift of North Attleboro, Mass., circa 1810-1840, signed "H. Tift" on dial. 32 1/2" high, 10" wide. Condition: crazing, stain, wear to dial, a few small repairs to wood, a couple small wood losses, gilt wear, loss, soiling. Provenance: Estate of John Albertine, New Jersey, a member of National Association of Watch & Clock Collectors. 1,000.00 - 2,000.00

**409 DeDietz Miniature Iron Case Clock**

DeDietz miniature iron case clock, Tuxedo, NY. Having an eight-day movement with second hand, with key. 4 1/8" high, 4 1/8" wide. Condition: cracks, small loss to dial, glass scratches, edge dent, paint wear, loss to case. Provenance: Estate of John Albertine, New Jersey, a member of National Association of Watch & Clock Collectors. 100.00 - 200.00

**410 NJ Tall Case Clock, Isaac Brokaw**

New Jersey tall case clock, movement by Isaac Brokaw of Hillsborough Township, NJ, circa 1777, with a brass and pewter dial having an eight day movement. Case attributed to Matthew Egerton of New Brunswick, NJ. 96" high, 20" wide, 10" deep. Condition: age cracks, case with edge wear, losses, scratches, nicks, finish wear, loss, dial wear. Provenance: Estate of John Albertine, New Jersey, a member of National Association of Watch & Clock Collectors. 4,000.00 - 6,000.00



April Connecticut Fine Estates Auction 4/26/2015

LOT #**411 Seth Thomas Mantel Clock With Swivel Base**

Seth Thomas mantel clock with eight-day four jewel movement on a swivel base. 8 1/2" high, 9 1/4" wide. Condition: scratch to dial, finish crazing. Provenance: Estate of John Albertine, New Jersey, a member of National Association of Watch & Clock Collectors. 200.00 - 300.00

**412 American Pillar & Scroll Mantle Clock**

American pillar and scroll clock with painted and gilded wood dial, reverse painted landscape below. 32" high, 16 1/2" wide. Condition: paint wear, loss, crazing to dial, repairs, loss to top. 800.00 - 1,200.00

**413 Med-281 GCC Metal Ball Form Clock**

Med-281 GCC metal ball form clock, with key. 9 5/8" high, 5 1/4" wide. Condition: paint wear, loss, restoration. Provenance: Estate of John Albertine, New Jersey, a member of National Association of Watch & Clock Collectors. 200.00 - 250.00

**414 French Brass Clock with Porcelain Numerals**

French brass clock with porcelain numerals, three glass sides with key under glass dome. 7" high, 3 5/8" wide. Condition: one chip, loss to each glass side panel. Provenance: Estate of John Albertine, New Jersey, a member of National Association of Watch & Clock Collectors. 300.00 - 400.00

**415 French Brass & Enamel Column Skeleton Clock**

French brass and enamel column skeleton clock, with key, under glass dome. Clock 9 1/4" high, 7 3/4" wide. Provenance: Estate of John Albertine, New Jersey, a member of National Association of Watch & Clock Collectors. 500.00 - 600.00

**LOT #****416 Waterbury Traveling Clock/Case**

Waterbury traveling clock with Speck one day time movement. 2 1/2" high, 2" wide. Condition: slight oxidation to finish. Provenance: Estate of John Albertine, New Jersey, a member of National Association of Watch & Clock Collectors. 100.00 - 200.00

**417 Three Miniature Clocks**

Three miniature clocks, comprising an Ansonia clock circa 1892, a Waterbury clock circa 1878 and a tip top. 1 1/2" high, 1 1/2" wide to 2 1/2" high, 2 1/4" wide. Condition: crack to dial of Ansonia clock, oxidation to tip top dial, all with finish wear, loss. Provenance: Estate of John Albertine, New Jersey, a member of National Association of Watch & Clock Collectors. 100.00 - 200.00

**418 Keebler See Saw Clock w/Glass Clock Form Jar**

Keebler See Saw clock in original box, with key, together with a "Happy Time Dutch Lunch Sauce" glass clock form jar. 4 3/4" high, 3 3/4" wide to 4 5/8" high, 3 1/2" wide. Condition: jar with loss, stains to label. Provenance: Estate of John Albertine, New Jersey, a member of National Association of Watch & Clock Collectors. 100.00 - 200.00

**419 Chelsea Ship's Clock w/Black Dial**

Chelsea ship's clock with black dial, with key, mounted on wood plaque. Clock 3 1/2" high, 7 1/2" diameter. Provenance: Estate of John Albertine, New Jersey, a member of National Association of Watch & Clock Collectors. 300.00 - 400.00



April Connecticut Fine Estates Auction 4/26/2015

LOT #**420 French Brass Traveling Clock w/Leather Case**

French brass traveling clock with tick tock escapement and eight day movement with key, in leather case. Back stamped "H & H France Patent French Make". 4 3/4" high, 3 1/8" wide. Condition: a few tiny nicks to glass edges. Provenance: Estate of John Albertine, New Jersey, a member of National Association of Watch & Clock Collectors. 300.00 - 400.00

**421 Brass & Wood Wag On The Wall Clock**

Brass & wood wag on the wall clock. 17 1/2" high, 6" wide. Condition: five holes in brass back plate, constructed of salvaged wood, rust to chains. Provenance: Estate of John Albertine, New Jersey, a member of National Association of Watch & Clock Collectors. 100.00 - 200.00

**422 French Ebonized & Gilt Bronze Mantel Clock**

French ebonized and gilt bronze mantel clock, c.1820 Charles X period, with eight day time and strike. 17 3/4" high, 9 1/2" wide. Condition: finish, paint wear, edge nicks, chips, dings, age cracks, repair to base, one partially loose column. Provenance: Estate of John Albertine, New Jersey, a member of National Association of Watch & Clock Collectors. 400.00 - 500.00

**423 English Barometer, C. Baker**

English barometer by C. Baker, 244 High Holborn, London. 38 1/2" high, 4 3/4" wide. Condition: edge loss to bottom of case. Provenance: Estate of John Albertine, New Jersey, a member of National Association of Watch & Clock Collectors. 600.00 - 700.00

**424 American Timby Mercury Barometer**

American Timby mercury barometer dated November 3, 1857. 38 1/4" high, 3" wide. Condition: finish wear, loss, chips, losses. Provenance: Estate of John Albertine, New Jersey, a member of National Association of Watch & Clock Collectors. 200.00 - 400.00

**LOT #****425 French Brass Traveling Clock w/Cylinder Escapement**

French brass traveling clock with cylinder escapement, with key, under glass dome. 2 3/4" high, 1 7/8" wide. Provenance: Estate of John Albertine, New Jersey, a member of National Association of Watch & Clock Collectors. 200.00 - 250.00

**426 Mahogany Veneered Pillar & Scroll Clock**

Mahogany veneered pillar & scroll clock circa 1820 by Chauncey Ives (1787-1857), active 1811-1838, with label. 31 1/2" high, 16 1/2" wide. Condition: replaced finial tops, dial with paint wear, loss, veneer cracks, veneer buckling, small losses. Provenance: Estate of John Albertine, New Jersey, a member of National Association of Watch & Clock Collectors. 400.00 - 500.00

**427 Bag Face Rug**

Flat woven bag face rug. 24" long, 22" wide. Condition: wear, losses. All rugs sold as is. 100.00 - 200.00

**428 Kilim Rug**

Kilim Rug. 98" long, 58 1/2" wide. Condition: wear, stains, losses, repairs. All rugs sold as is. 200.00 - 300.00

**429 Bijar Area Rug**

Bijar area rug, early 20th century, 3'9" long, 2'8" wide. Condition: pile wear, end losses. All rugs sold as is. 300.00 - 400.00

**430 Mahal Carpet**

Mahal carpet with salmon floral field, navy floral primary border. 148" long, 101" wide. Condition: pile wear, loss, one end patch approximately 1" wide, 2" long. All rugs sold as is. 500.00 - 700.00



April Connecticut Fine Estates Auction 4/26/2015

LOT #**431 Fine Turkish Rug**

Fine Turkish Rug. 4'10" long, 3'2" wide.
Condition: pile wear, side, end losses. All rugs sold as is. 300.00 - 400.00

**432 European Savonnerie Floral Woven Runner**

European Savonnerie floral woven runner. 4' wide, 14' long. Condition: pile wear, six inch long tear at one end, one end "added", edge losses, fabric tape on verso at ends. All rugs sold as is. 200.00 - 300.00

**433 Caucasian Rug**

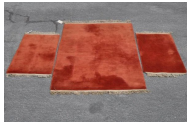
Caucasian rug, 19th century. 6'5" long, 3'5" wide. Condition: pile wear, loss. All rugs sold as is. 1,600.00 - 1,800.00

**434 Persian Area Rug**

Persian rug in shades of blue and salmon. 86" long, 50" wide. Condition: pile wear, loss, losses, added fringe. All rugs sold as is. 100.00 - 200.00

**435 Three Nichols Rugs/Sculpted Floral Design**

Three Nichols rugs in sculpted floral design. 52" long, 27" wide to 87" long, 54" wide. Condition: stains. 200.00 - 300.00

**436 Persian Heriz Rug**

Persian Heriz rug, early 20th century. 6'6" long, 4'10" wide. Condition: pile wear, loss, side, end losses. All rugs sold as is. 500.00 - 600.00

**LOT #****437 Chinese Floral Mat**

Chinese floral mat. 52" long, 30" wide. Condition: scattered small losses, light border stain, remnants of rubber corners verso. All rugs sold as is. 50.00 - 100.00

**438 Room Size Agra Rug**

Room size Agra rug. 10' 2" wide, 15' 4" long. Condition: stains, pile wear, loss, repairs, losses. All rugs sold as is. 200.00 - 400.00

**439 Turkish Runner**

Turkish runner, 19th century. 12'5" long, 3'1" wide. Condition: stains, pile wear, loss, losses, repairs, 1 1/2" tear near one end. All rugs sold as is. 1,000.00 - 1,200.00

**440 Drugget Floral Carpet**

Drugget floral carpet. 14' 3" wide, 99 1/2" long. Condition: several holes, separations to flowers, edge loss. All rugs sold as is. 200.00 - 300.00

**441 Turkish Geometric Rug**

Turkish rug in a red and orange geometric design. 77" long, 41 1/2" wide. Condition: pile wear, loss, losses. All rugs sold as is. 50.00 - 100.00

**442 Indo-Persian Room Size Rug**

Indo-Persian room size rug, early 20th century. 14'7" long, 10' wide. Condition: pile wear, stains, side, end losses. All rugs sold as is. 1,600.00 - 1,800.00



April Connecticut Fine Estates Auction 4/26/2015

LOT #**443 Sarouk Mat**

Sarouk mat. 48" long, 26 1/2" wide. Condition: a few small light surface stains, partially rolled edge. All rugs sold as is. 100.00 - 200.00

**444 Turkish Oushak Runner, 19th C.**

Turkish Oushak Runner, 19th century. 3' wide, 11'3" long. Condition: stains, pile wear, loss, losses. All rugs sold as is. 500.00 - 700.00

**445 Eagle Kazak Carpet**

Kazak eagle rug with two central red, blue and white medallions on a salmon field filled with various small geometric designs, signed in white center edge of field, white primary border. 56 1/2" long, 92" wide. Condition: pile wear, loss, losses, repairs. All rugs sold as is. 2,000.00 - 3,000.00

**446 Sarouk Mat**

Sarouk mat with central medallion flanked by floral urns. 49" long, 24" wide. Condition: rolled edges. All rugs sold as is. 100.00 - 200.00

**447 Persian Heriz Runner**

Persian Heriz runner. 10'11" long, 3'3" wide. Condition: pile wear, loss, losses, stains, bleed. All rugs sold as is. 100.00 - 200.00

**448 Caucasian Kazak Rug**

Caucasian Kazak Rug. 3'8" wide, 6'1" long. Condition: pile wear, loss, repairs. All rugs sold as is. 900.00 - 1,100.00

**LOT #****449 Caucasian Rug**

Caucasian rug with unique design, early 19th century. 8'11" long, 5'8" wide. Condition: pile wear, loss, holes, losses, repairs. All rugs sold as is. 700.00 - 800.00

**450 Caucasian Mat**

Caucasian mat in salmon, blue and white. 59" long, 28 3/4" wide. Condition: pile wear, loss, edge losses, all sides rebound. All rugs sold as is. 50.00 - 100.00

**451 Persian Hamadan Carpet**

Persian Hamadan carpet in rose, blue and brown. 75" long, 55 1/2" wide. Condition: one side with one inch edge cut, other side with moth damage at one end. All rugs sold as is. 400.00 - 600.00

**452 Turkish Rug**

Turkish rug with repeat medallion design. 64" high, 41 1/2" wide. Condition: stains. 200.00 - 300.00

**453 Chinese Nichols Art Deco Carpet**

Chinese Nichols art deco carpet in green with floral detail. 9' long, 8' wide. Condition: small stains. All rugs sold as is. 500.00 - 700.00

**454 Caucasian Kilim Rug**

Caucasian Kilim rug. 10'2" long, 69" wide. Condition: wear, stains, losses. All rugs sold as is. 300.00 - 400.00



April Connecticut Fine Estates Auction 4/26/2015

LOT #**455 Oriental Rug**

Oriental rug in a salmon and blue floral pattern. 69" long, 43 1/2" wide. Condition: pile wear, loss, losses, center hole, duct tape on verso. All rugs sold as is. 200.00 - 300.00

**456 Turkish Runner**

Turkish Runner. 9'5" long, 35" wide. Condition: stains, pile wear, loss, losses, repairs. All rugs sold as is. 200.00 - 300.00

**457 Oriental Rug**

Oriental rug having a central rust field with three geometric navy blue and white medallions, multicolor primary border. 71 1/2" high, 60 1/2" wide. All rugs sold "as is". 300.00 - 400.00



Schwenke Auctioneers/Woodbury Auction LLC
Terms and Conditions of Sale

Bidding on items indicates review of and acceptance of the following:

1. All goods are sold "AS-IS", "WHERE IS", "WITH ALL FAULTS" and all sales are final. Schwenke Auctioneers/Woodbury Auction is not responsible for the correctness of lot lead lines, lot descriptions or statements of condition, and we do not represent or warrant the description, quality, size, importance, genuineness, authenticity, authorship, attribution, provenance, age, period, culture, source, origin or condition of any items and no statement made in our advertisements, in our catalogs either printed or online, at or during the auction, in the bill of sale, or otherwise or elsewhere, regardless of the degree of detail or specificity, shall be deemed such a representation or warranty.

Condition information and/or statements of condition are not included in auction item descriptions. Any condition information which may be included is for information purposes only and may not be relied upon as the equivalent of a formal Condition Report. Condition Reports must be requested in writing, and will be provided in writing. We do not give verbal Condition Reports. No employee or agent is authorized to or will make any statements regarding condition. Condition Reports given in response to bidder requests are issued in good faith, but may not be construed as statements of fact or an expert

opinion or a guarantee of condition and may not be relied upon in substitution of or in lieu of physical inspection. All auction items are available for bidder examination prior to the auction. Bidding on an item signifies that you have examined that item, either personally or through an authorized agent, or that you have elected not to examine that item. Any request for additional photos will be responded to when possible and images will be added to the online catalog lot description. Requests for Condition Reports and/ or photographs submitted later than 24 hours before the sale will not be responded to, and we do not provide photographs post-auction. It is the responsibility of prospective bidders to examine lots in person or through an authorized agent and decide their level of interest. Neither the auctioneer, nor the consignor, is responsible for the accuracy of any printed or verbal descriptions or any Condition Reports. All weights and measurements are approximate and not guaranteed. Buyer relies solely on his/her own expertise and judgment regarding authenticity and condition when bidding on an item. If you require absolute certainty in all areas of authenticity and/or condition and the results of your own evaluation leave uncertainty in your mind, we recommend that you not bid on the item in question. As noted above, all sales are final at the fall of the hammer, and we do not give refunds. In the event of a dispute regarding any lot, the purchaser's sole remedy shall be rescission of the sale and restitution of the original purchase price and premium paid by such purchaser. Schwenke Auctioneers/Woodbury Auction shall have no liability for any damages, whether incidental, consequential or otherwise, arising out of or in connection with any sale to purchaser. No refunds will be made for any shipping and/or handling fees paid to a third party by the purchaser. No claims will be recognized if made by anyone other than the original purchaser. Schwenke Auctioneers/Woodbury Auction pays its consignors 30 business days after the day of sale. After that date, Schwenke Auctioneers/Woodbury Auction will not entertain any requests for refunds.

2. A buyer's premium will be added to the hammer price of each lot and is payable by the purchaser as part of the total purchase price.

a. In-House: The buyer's premium per lot for "in-house" purchases in our auction (not on any internet platform) is 22% of the final bid up to and including \$500,000, and 17% for the remaining balance above \$500,000. In-house purchasers who pay their invoices in full in cash or approved check within seven days of the auction will pay a reduced buyer's premium of 20%.

b. Internet: The buyer's premium per lot for purchases in our auction on an internet platform is the fixed percentage rate which is posted on that platform. There are no discounts available for early payments or cash payments, and no exceptions can be made.

3. All in-house bidders are required to register in person and give full identification including valid driver's license and credit card information prior to the beginning of the auction and are

April Connecticut Fine Estates Auction 4/26/2015

required to use the number issued them when identifying themselves as the successful bidder. We also reserve the right to require other auction house credit references.

4. The auctioneer has the sole and exclusive power and authority, without exception and without liability, to (a) resolve any disputes between bidders, (b) determine whether to pass or re-offer any lot for sale, (c) reject or challenge any bid or advance at the start of the bidding or during the bidding, and (d) otherwise regulate the bidding and its increments. The auctioneer shall further have the right to reject any opening or subsequent bid that, in the auctioneers' sole opinion and discretion, is not commensurate with the value of the lot or is not within the published bid increments. At the auctioneer's discretion, no bid of less than one-half the low estimate will be accepted from any source: phone bidding, absentee bidding, internet bidding, or live bidding in the gallery. The highest bidder as determined by the auctioneer shall be deemed the purchaser. If the auctioneer receives more than one bid of the same value, only the first acknowledged will be accepted. If any dispute arises after the sale, the sale record maintained by Schwenke Auctioneers/Woodbury Auction is conclusive. Although Schwenke Auctioneers/Woodbury Auction will endeavor to execute accurately any absentee/phone bids, including internet absentee bids, these services are offered only as a convenience to clients who are not physically present at the auction, and we are not responsible for any errors or omissions which may occur in the exercise of these services. "Auctioneer" as used in these Conditions of Sale means an employee or representative of Schwenke Auctioneers/Woodbury Auction duly licensed as an auctioneer or otherwise authorized by Schwenke Auctioneers/Woodbury Auction to conduct an auction under the laws of the State of Connecticut.

5. Schwenke Auctioneers/Woodbury Auction offers the internet bidding platform tool as a convenience to our clients.

(a) Approval: Approval to bid on any internet bidding platform is at the discretion of Schwenke Auctioneers/Woodbury Auction and applicants with less than three months recorded bidding history will not be approved to bid in our auction without providing credit information and photo identification together with a valid credit card. Depending on the circumstances, a deposit in the amount of 50% of the low estimate on all lots of interest may be required as a condition of approval to bid.

(b) Bids, Technical Issues: Please be aware that there is no time advantage to absentee bids submitted on the internet. Also, please be advised that in some cases an absentee bid submitted on the internet before or during the auction may not be received by the auctioneer conducting the sale, or if received may not be accepted. This may occur even when the internet absentee bid was placed earlier than an equivalent absentee bid placed with the house. No bids will be accepted after the auctioneer has closed the lot. The auctioneer has final discretion over which bids to accept, as described elsewhere in this document, and live bidders in the room are often recognized first by the auctioneer.

Our experience suggests that internet bidders should bid their limit, not just the start bid, in order to have the best chance of winning a lot. There are frequently delays in transmission of bids over the internet, and in some cases internet bids may be received after a lot has been sold to another bidder and will therefore not be accepted. Internet bids are not visible to the auctioneer until the lot opens for bidding at the live auction, and even then may only be visible to the internet clerk and may not be accepted by the auctioneer, who is free to accept bids from any source and in any order in the exercise of his/her discretion. Absentee bids left directly with Schwenke Auctioneers/Woodbury Auction are time stamped and in the case of multiple absentee bids are executed competitively with respect to start bids and bid increments.

6. Title to each auction lot passes upon the fall of the auctioneer's hammer, and the purchaser assumes full ownership of and responsibility therefore at the fall of the auctioneer's hammer. Thereafter the property is at the sole risk of the Buyer and neither the Seller nor Schwenke Auctioneers/Woodbury Auction shall be responsible for any loss or damage.

7. Some lots carry reserves or minimum selling prices, which is a figure set by the consignor and Schwenke Auctioneers/Woodbury Auction below which a lot will not be sold. Schwenke Auctioneers/Woodbury Auction will execute the reserve bids on behalf of consignors. The reserve will not exceed the low estimate. Estimates are subject to change at any time prior to the offering of each lot.

8. As noted above in Section 4, absentee and telephone bids are accepted and will be executed when possible, although solely as a convenience to customers. Phone bids are accepted only on lots with a low estimate of \$500 or greater, and are opened at one half the posted low estimate. Absentee bids are executed in the order received, therefore in the case of identical absentee bids on a lot, the first bid received will be recognized. Schwenke Auctioneers/Woodbury Auction will not be held responsible for any errors or omissions, or failure to execute bids accurately. Bidders are encouraged to submit absentee and telephone bid requests 24 hours prior to the auction, and Schwenke Auctioneers/Woodbury Auction reserves the right to decline acceptance of absentee and/or phone bid requests tendered after 5pm on the day prior to the sale. Purchases will not be available to absentee buyers for pick-up during the auction unless arrangements are made prior to the sale.

9. Items may be withdrawn at any time prior to being offered at the auction.

10. Payments accepted are cash, approved checks, money orders, cashier's checks and wire transfers. We do not accept debit cards, American Express or Paypal. Credit card payments are accepted only when the purchaser is present in the gallery and the card is swiped. Split payments (more than one form of

April Connecticut Fine Estates Auction 4/26/2015

payment on a single invoice) are not accepted. Non US bidders may be required to pay by wire transfer. Valid credit card information may be required to register to bid, and a deposit may be taken toward any balance due resulting from successful bids. First time buyers must establish bank credit before the auction in order to have "approved check" status. References from other auctioneers may also be required or may satisfy the credit reference requirement. Purchases paid for with non-approved personal/business checks or international bank checks/money orders may not be released until ten days from receipt of payment or until payment clears. Wire transfers are accepted with a \$25.00 additional wire transfer fee added to the invoice price.

PLEASE NOTE THAT SCHWENKE AUCTIONEERS/WOODBURY AUCTION TERMS AND CONDITIONS TAKE PRECEDENCE OVER ANY TERMS AND CONDITIONS SPECIFIED BY CREDIT/DEBIT CARD ISSUERS IN CONNECTION WITH PURCHASES BY CREDIT/DEBIT CARD. BY BIDDING AT OUR AUCTION YOU SPECIFICALLY ACKNOWLEDGE AWARENESS OF AND AGREEMENT WITH THIS PROVISION OF OUR TERMS AND CONDITIONS.

Payment is due within seven (7) days after the sale. If a buyer fails to make payment within ten (10) days after the sale, the buyer's premium increases by 3% and the account will be delinquent. Any buyer credit card on record will be charged the invoice total plus the additional 3% late fee. If no credit card is available, or if a credit card number supplied is invalid or a credit card charge is rejected, Schwenke Auctioneers/Woodbury Auction LLC shall be entitled to do any or all of the following, in its sole discretion:

- a. After 15 Days - Void any or all purchases covered by the invoice and sell the item(s) to an underbidder or other bona fide buyer without liability to the delinquent buyer and without releasing said buyer from responsibility to pay for any remaining purchases or losses/damages incurred due to nonpayment.
- b. After 30 Days - File a Civil Complaint against the buyer to recover any balance due plus court fees, interest, storage fees, administrative costs, and any other applicable financial hardship caused to Schwenke Auctioneers/Woodbury Auction LLC and/or the consignor or pursue other collection avenues to recover any and all losses.
- c. After 45 Days - Re-offer the items for sale, either publicly or privately, and collect any remaining balance owed after such sale from the original buyer, including, but not limited to, the total balance remaining, court fees, interest, storage fees, administrative costs (including those related to re-selling the item(s) and any other related fees).
- d. Charge interest at a rate of 1% per month throughout the entire frame of non-payment.
- e. Reject further bidding or consignments by the buyer at any and all future auctions.

11. All purchases are subject to 6.35% Connecticut state sales tax unless the purchaser possesses a Connecticut sales tax exemption number, and provides Schwenke Auctioneers/Woodbury Auction with a valid, fully completed State of Connecticut Department of Revenue Services Sales & Use Tax Resale Certificate. Valid exemption numbers from other states are accepted if accompanied by a fully completed State of Connecticut Department of Revenue Services Sale & Use Tax Resale Certificate and a business card or letterhead.

12. ALL BUYERS ARE ENTIRELY RESPONSIBLE FOR ARRANGING AND PAYING FOR ALL PACKING AND SHIPPING OF PURCHASED ITEMS. PLEASE DO NOT CONTACT SCHWENKE AUCTIONEERS/WOODBURY AUCTION FOR PACKING OR SHIPPING QUOTES OR ASSISTANCE, AS WE DO NOT MAINTAIN AN IN-HOUSE SHIPPING DEPARTMENT - ALL SHIPPING IS OUTSOURCED. Please consider any and all shipping costs before you place an absentee bid or bid live. The value of any item may have no bearing on the cost to ship it and shipping costs will not affect your contractual obligations undertaken by registering to bid. While we do not maintain an in-house pack/ship department, as a courtesy and convenience to our customers we have listed below several shippers you may contact to provide packing/shipping estimates, arrange pickup of your items from Schwenke Auctioneers/Woodbury Auction, and arrange for packing/shipping to your location. A release statement with the name and contact information of your shipper must be emailed or enclosed with your payment to Schwenke Auctioneers/Woodbury Auction before any merchandise can be released.

Third Party Shippers:

Business and Shipping Center of Southbury
203-264-2240
Customer.service@businessandshipping.com
(smaller items)

The UPS Store,
109 Federal Road, Danbury, CT
203-748-0111
store5413@theupsstore.com
(smaller items)

Scott Cousins
978-491-9353
scottcousins22@aol.com
(furniture and decorations)

G. Nelson
914-588-0265
NelsonQ1@verizon.net
(Florida to Massachusetts)

April Connecticut Fine Estates Auction 4/26/2015

Hebert Transportation
586-524-7701
Heberttransportation@yahoo.com
(cross country delivery)

Beardsley's Antiques
203-270-0471
(NY and Boston - night and weekend delivery only)

Plycon Van Lines
631-269-7000
(Long distance) (Large items)

Sure Express Worldwide
1-877-877-0889
sureexpress@maine.rr.com, www.SureExpressworldwide.com

Top Quality Delivery Services
860-379-3424
(CT, NY, MA) (Large items)

Marie's Movers
(203)264-0488
mariesmovers@yahoo.com

13. For buyers attending the live auction, all merchandise purchased must be paid for and removed from the premises the day of the auction. Storage charges will accrue at a rate of \$10 to \$50 per day, depending on the item, beginning fifteen (15) days after the sale.

14. Schwenke Auctioneers/Woodbury Auction adheres to all Federal laws applicable to the sale of items containing materials from endangered or protected animal species, and WILL NOT ACCEPT LIABILITY for the purchase of any item which may include any material including, but not limited to, ivory, rhinoceros horn, tortoise shell, coral, whalebone or endangered woods. In the event an item is found to contain any of these protected products, it is THE SOLE RESPONSIBILITY OF THE BUYER to have conducted their own due diligence and to acknowledge and adhere to the applicable terms and conditions of any laws and regulations which apply to purchasing or the importation or exportation of such materials or items.

15. Employees of Schwenke Auctioneers/Woodbury Auction are not prohibited from bidding at the auction. It is possible that through their employment relationship they may have access to information not available to the public.

16. In all instances Schwenke Auctioneers/Woodbury Auction's or the auctioneer's joint or several interpretation of these conditions is final and binding on all bidders, and by placing a bid all bidders acknowledge having read and agreed to these Terms and Conditions.
